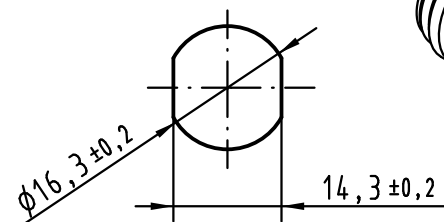
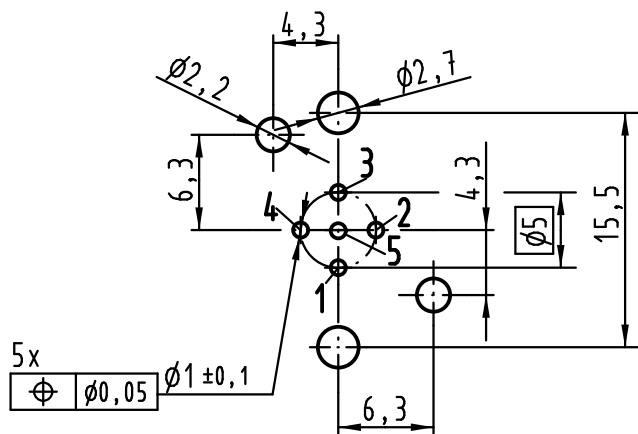


Montageausschnitt
panel cut out

(1:1)





Leiterplatten Lochbild
PCB layout



1) Leiterplattenauflage/ top surface PCB

empfohlene Leiterplattenstärke: 1,6mm/
recommended PCB-thickness: 1,6mm

 All Dimensions in mm Original Size DIN A 4			Techn. Character.			Nicht tolerierte Maß/Free size tolerances	
			Dat.	Name	Maßstab/Scale 2:1	M12 Gerätestift A-kodiert IP20 5-polig panel feed through/PCB A-coded 5-pole	
			Detail.	DY			
			Insp.	SP			
			Stand.				
EC04624	19.03.12	DY	HARTING Electronics GmbH & Co. KG			TB 21 03 321 1510	
413598	11.02.08	DY	D-32339 ESPELKAMP				
413038							
Mod.	Dat.	Name	Sub.			Blatt/ page	