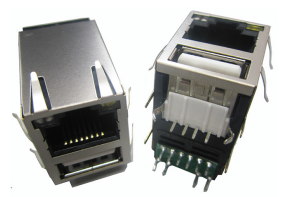


# RJ45 10/100 Base-T / 1 X USB Combo, w/ LEDs, Ext Temp

**ARJ-169**

**RoHS/RoHS II Compliant**



16.80 x 21.10 x 28.35mm

## FEATURES:

- Compliant with IEEE802.3ab standard
- Tab up RJ45 Jack + 1USB Combo
- High performance for maximum EMI suppression
- 350 $\mu$ H minimum OCL with 8mA bias current
- RoHS peak wave solder temperature 260°C

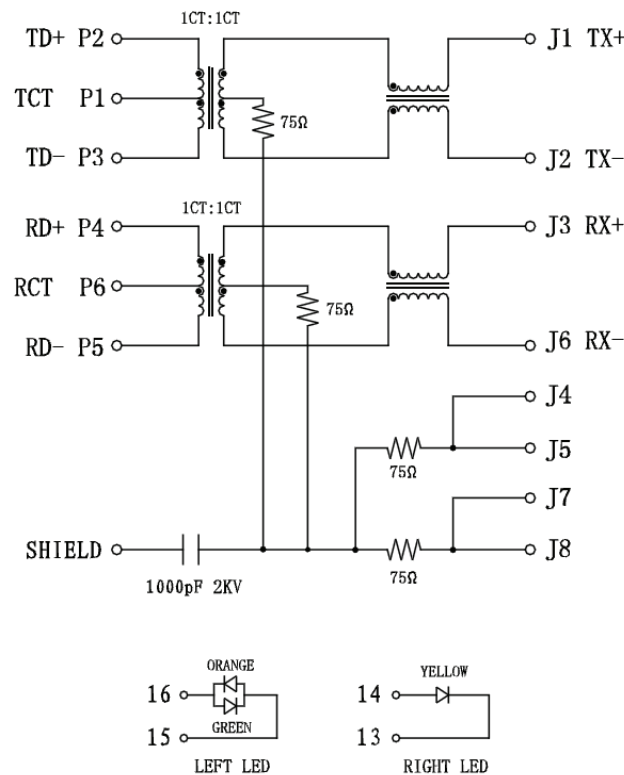
## APPLICATIONS:

- Support 10/100 Base-T AutoMDIX application with Bi-Color LEDs
- Extended Temperature (-40°C~85°C)
- Network Interface Cards(NIC), LAN-on-Motherboard(LOM) and PC
- Suitable CAT 3, 5e & 6 cable and UTP
- Provides signal conditioning, EMI suppression and signal isolation

## STANDARD SPECIFICATIONS

Parameters	Minimum	Typical	Maximum	Units	Notes
Operating Temperature	-40		+85	°C	
Storage Temperature	-40		+85	°C	
Turn Ratio ( $\pm 3\%$ )	1CT:1CT				Tx
	1CT:1CT				Rx
Inductance (OCL)	350			$\mu$ H	100KHz/0.1V@8mA
Insertion Loss			-1.0	dB	1-100MHz
Return Loss	-18			dB	1-30MHz
	-16				30-60MHz
	-12				60-80MHz
	-10				80-100MHz
Cross Talk	-35			dB	1-100MHz
CMR	-35			dB	1-100MHz
Hi-Pot	1500Vrms/0.5mA/60Sec				Pri to Sec

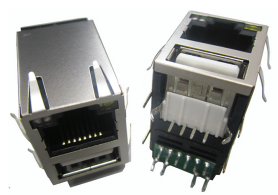
## SCHEMATICS



# RJ45 10/100 Base-T / 1 X USB Combo, w/ LEDs, Ext Temp

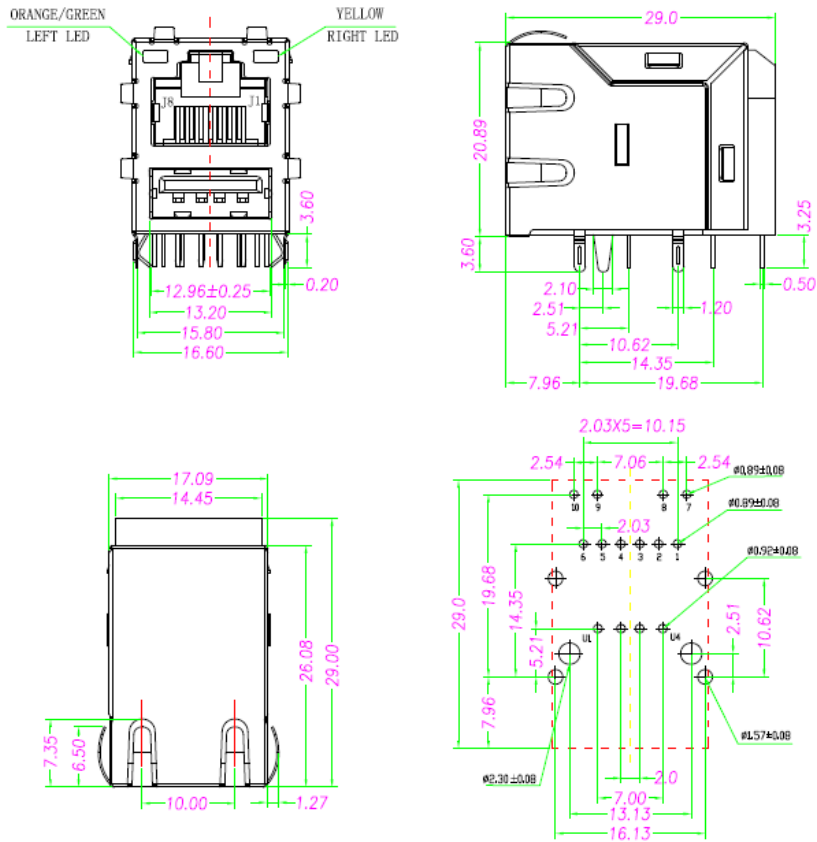
ARJ-169

RoHS/RoHS II Compliant



16.80 x 21.10 x 28.35mm

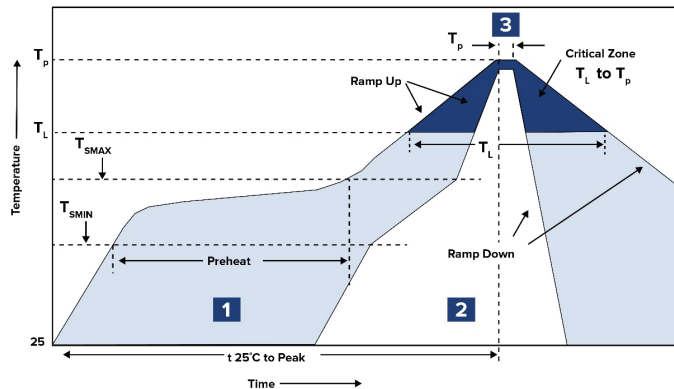
## MECHANICAL DIMENSIONS



Suggested PCB Layout (Top View)

Dimensions: mm (Unless otherwise specified, all tolerances are ±0.25)

## WAVE SOLDERING PROFILE



Zone	Description	Temperature	Time
1	Preheat	$T_{SMIN} \sim T_{SMAX}$ 150°C ~ 180°C	60 ~ 120 sec.
2	Reflow	$T_L$ 227°C	8 sec.
3	Peak heat	$T_P$ 265°C	3 sec. MAX

# RJ45 10/100 Base-T / 1 X USB Combo, w/ LEDs, Ext Temp

**ARJ-169**

**RoHS/RoHS II Compliant**

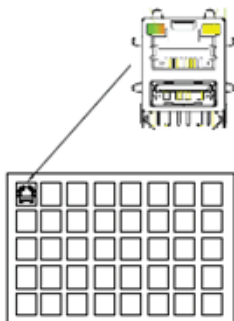


16.80 x 21.10 x 28.35mm

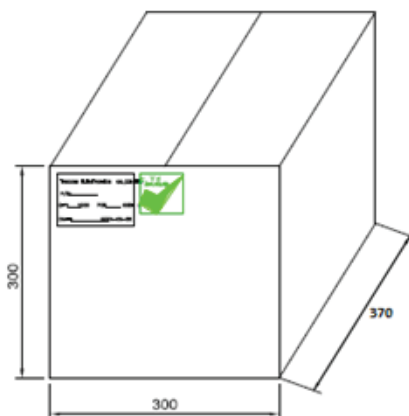
## PACKING:

**Bulk/Tray: 40pcs/tray, 16 trays/carton**

**Carton Size: 370 x 300 x 300 mm, weight is 9.5Kg**



**16 Trays** →



**Dimensions: mm**

**ATTENTION:** Abracon LLC's products are COTS – Commercial-Off-The-Shelf products; suitable for Commercial, Industrial and, where designated, Automotive Applications. Abracon's products are not specifically designed for Military, Aviation, Aerospace, Life-dependent Medical applications or any application requiring high reliability where component failure could result in loss of life and/or property. For applications requiring high reliability and/or presenting an extreme operating environment, written consent and authorization from Abracon LLC is required. Please contact Abracon LLC for more information.