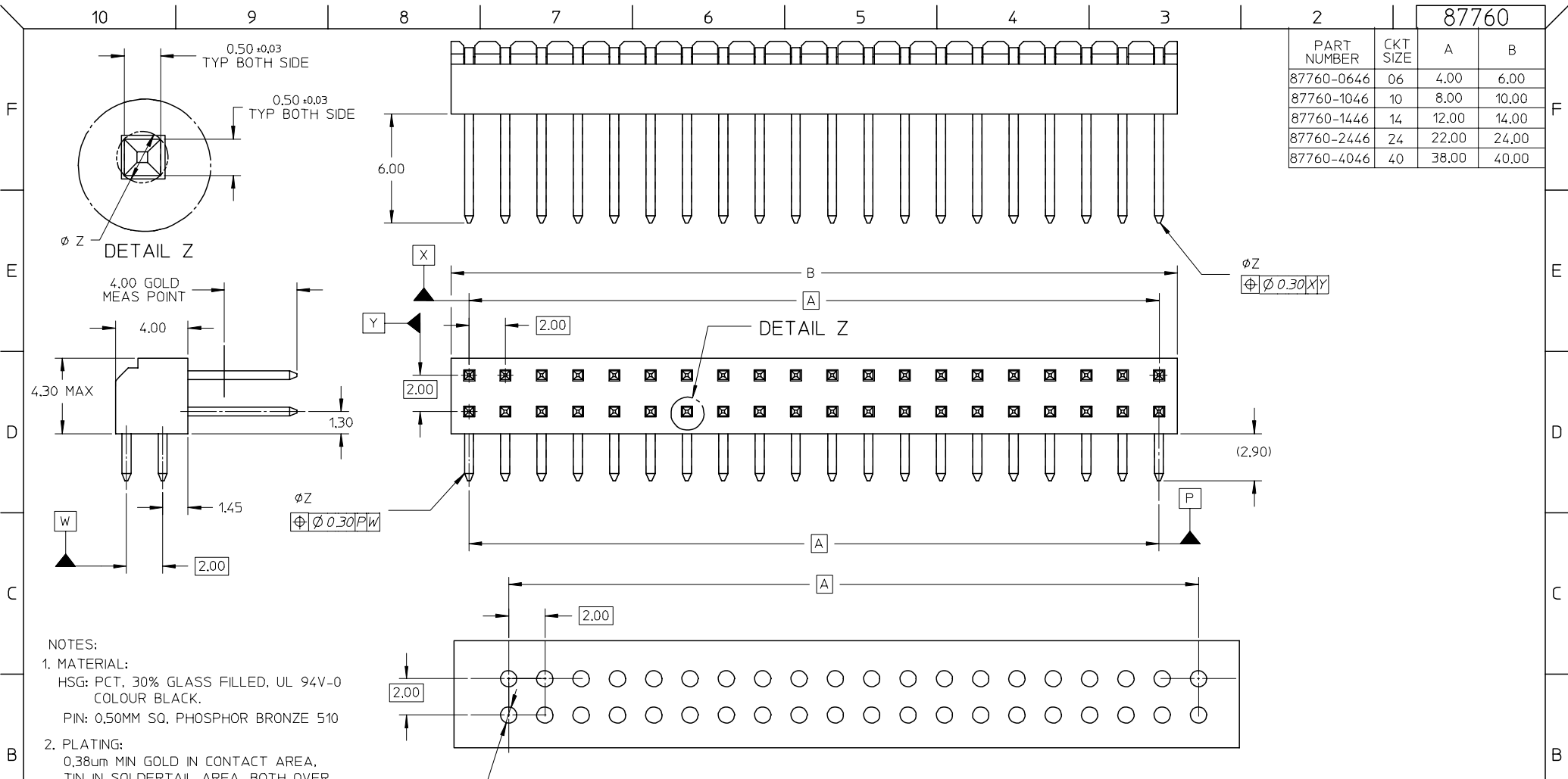


		87760	
PART NUMBER	CKT SIZE	A	B
87760-0646	06	4.00	6.00
87760-1046	10	8.00	10.00
87760-1446	14	12.00	14.00
87760-2446	24	22.00	24.00
87760-4046	40	38.00	40.00



- NOTES:
- MATERIAL:  
HSG: PCT, 30% GLASS FILLED, UL 94V-0 COLOUR BLACK.  
PIN: 0.50MM SQ. PHOSPHOR BRONZE 510
  - PLATING:  
0.38µm MIN GOLD IN CONTACT AREA,  
TIN IN SOLDER TAIL AREA, BOTH OVER NICKEL OVERALL
  - PARTS TO BE PACKED IN TRAY.
  - PRODUCT SPEC PS-87761-100 APPLIES.
  - RECOMMENDED PCB BOARD THK 1.60±0.10 MM.
  - 40 CKT USED FOR ILLUSTRATION ONLY

EC NO: S2004-088Z DRWN:KSEE 2004/09/28 CHKD:PTLM 2004/09/28 APPR:SKTOH 2004/09/28	QUALITY SYMBOLS ▽ = 0 ▽C = 0	GENERAL TOLERANCES (UNLESS SPECIFIED)		SCALE NTS	DESIGN UNITS METRIC	THIRD ANGLE PROJECTION	REVISE ON CAD ONLY
		4 PLACES ± --- ± ---	3 PLACES ± --- ± ---	DIMENSION STYLE MM ONLY		TITLE SALES DRAWING MGRID, 2MM DUAL ROW HDR. R/A	
A1	DESCRIPTION	2 PLACES ± 0.2 ± ---	1 PLACE ± --- ± ---	DRAWN BY KSEE	DATE 2003/10/17	MATERIAL NO. DOCUMENT NO. SHEET NO. SEE TABLE SD-87760-133 1 OF 1	
		ANGULAR ± 3 °		CHECKED BY KCLING	DATE 2003/12/02	MOLEX INCORPORATED	
		DRAFT WHERE APPLICABLE		APPROVED BY SKTOH	DATE 2003/12/11	THIS DRAWING CONTAINS INFORMATION THAT IS PROPRIETARY TO MOLEX INCORPORATED AND SHOULD NOT BE USED WITHOUT WRITTEN PERMISSION	
		MUST REMAIN WITHIN DIMENSIONS					