

MICRO SWITCH

A DIVISION OF MINNEAPOLIS-HONEYWELL REGULATOR COMPANY
MINNEAPOLIS, MINN. 55412

FED. MFR. CODE 91929

SWITCH - BASIC

CATALOG LISTING

YA-2RQ1-A2

ADM3000

(M) YA-2RQ1-A2
ISSUE 1

YA-2RQ1-A2
PAGE 1 OF 1

M

DRAWING
NUMBER

11

ISSUE

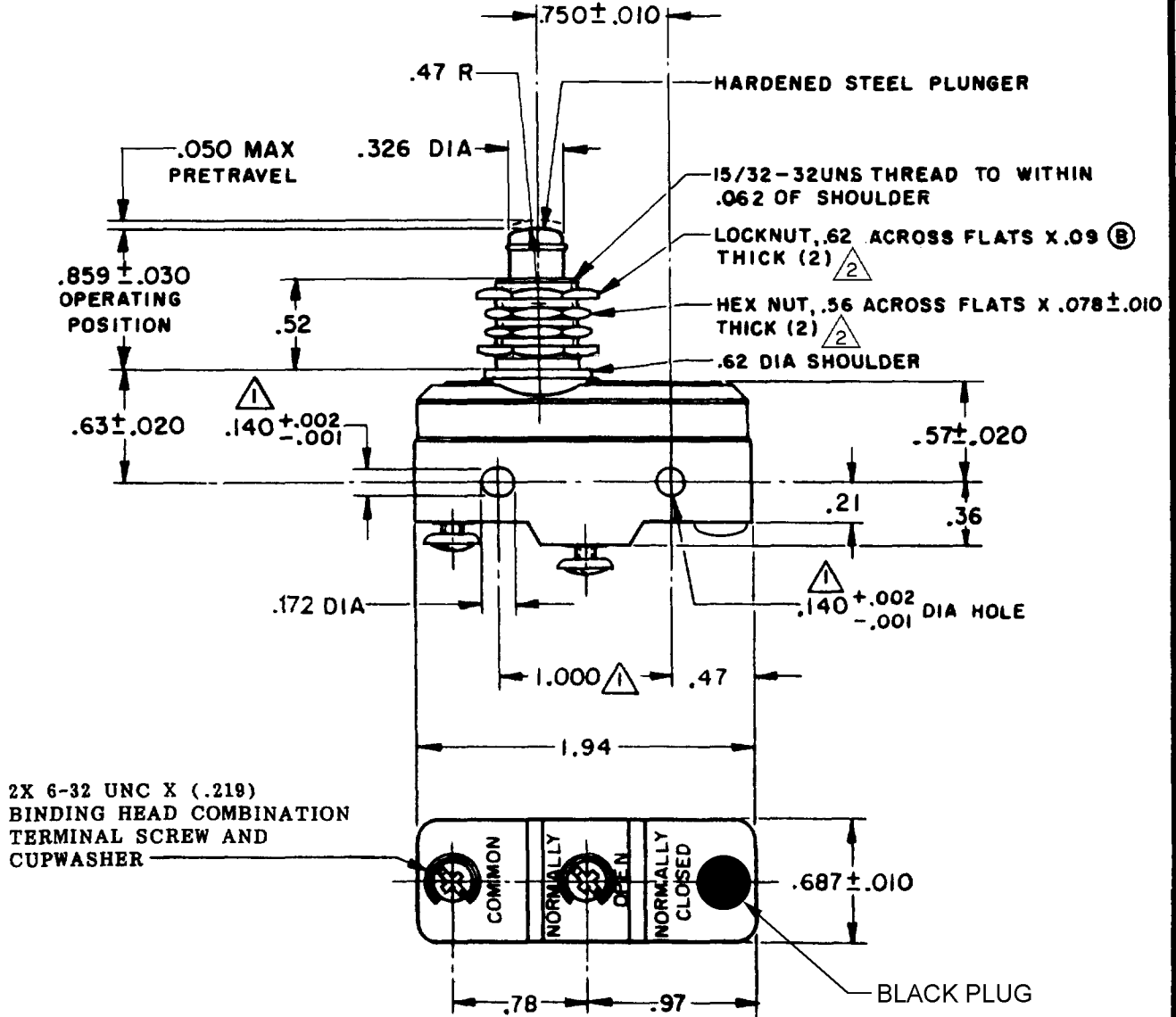
REPLACES

RELEASE NO.

CHECK

REVISIONS

A	CO 9600	17 FEB 06	RJ
B	CO 14866	17 FEB 06	RJ
C	CO 34311	17 FEB 06	RJ
D	CO 48448	17 FEB 06	RJ
E	CO 73287-J	17 FEB 06	RJ
F	CO 77588	17 FEB 06	RJ
G	CO 82133	17 FEB 06	RJ
H	CO 93346	17 FEB 06	RJ
J	0000677	17 FEB 06	RJ
K	0018388	17 FEB 06	RJ



- NOTES
- ① MOUNTING HOLES WILL ACCEPT PINS OR SCREWS OF .139 MAX DIA ON 1.000 ± .002 CENTERS
 - ② HARDWARE FURNISHED UNASSEMBLED

THIS DRAWING COVERS A PROPRIETARY ITEM AND IS THE PROPERTY OF MICRO SWITCH, A DIVISION OF MINNEAPOLIS-HONEYWELL REGULATOR CO. THIS DRAWING IS NOT TO BE COPIED OR USED WITHOUT THE APPROVAL OF MICRO SWITCH.

CHARACTERISTICS	ELECTRICAL DATA	SCALE FULL
OPERATING FORCE - - - - - 14 - 22 OZ	CONTACT ARRANGEMENT S P N O	DO NOT SCALE PRINT
RELEASE FORCE - - - - - 10 OZ MIN	L23 20A - 125, 250 OR 480 VAC 10A - 125 VAC "L" 1HP - 125 VAC, 2HP - 250 VAC 1/2A - 125 VDC, 1/4A - 250 VDC	UNLESS OTHERWISE SPECIFIED DIMENSIONS ARE IN INCHES
DIFFERENTIAL TRAVEL - - - .002 - .0075	L288 L308 L315	TOLERANCES ARE:
OVERTRAVEL - - - - - .219 MIN	CE	ONE PLACE (.0) ±.030 TWO PLACE (.00) ±.015 THREE PLACE (.000) ±.005 ANGLES ±
	20(3)A 250V ~ T85 5E4	WEIGHT

RASTER

DRAWN

R E R 5 MAY 60 CHECK GCH 6 MAY 60