

AV series

Security pushbutton switches • Ø 22 or 24 mm •
with large actuator • momentary NC+NO



DISTINCTIVE FEATURES

- Large actuator
- Low profile option
- Momentary (combined NC+NO)
- Anodized actuators
- Sealed to IP65



ENVIRONMENTAL SPECIFICATIONS

- Front panel sealing : IP65 according to IEC 60529
- Operating temperature : -20°C to +55°C (-4 °F to +131 °F)



ELECTRICAL SPECIFICATIONS

- Max. current/voltage rating with resistive load (microswitch) : 5 A 250 VAC
- Initial contact resistance : 100 mΩ max.
- Insulation resistance : 1,000 MΩ min. at 500 VDC
- Dielectric strength : 2,000 Vrms 50 Hz min. between terminals and frame
- Electrical life : 1,000,000 cycles at 1 A 250 VAC
100,000 cycles at full load



GENERAL SPECIFICATIONS

- Torque : 1.5 Nm min. - 4 Nm max. applied to nut
- Panel thickness : 1 (.039) to 6 mm (.236) max.
- Low level or mechanical life : 1,000,000 cycles
- Hand soldering : 300 °C (572 °F), 5 sec. max.



MATERIALS

- Case : polyester, glass filled
- Contacts : silver/nickel alloy
- Bushing and actuator : see next page.

The company reserves the right to change specifications without notice.

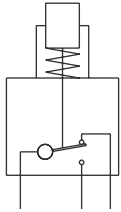


AV series

Security pushbutton switches •
Ø 22 or 24 mm • with large actuator • momentary NC+NO



ELECTRICAL FUNCTIONS



Combined NC+NO



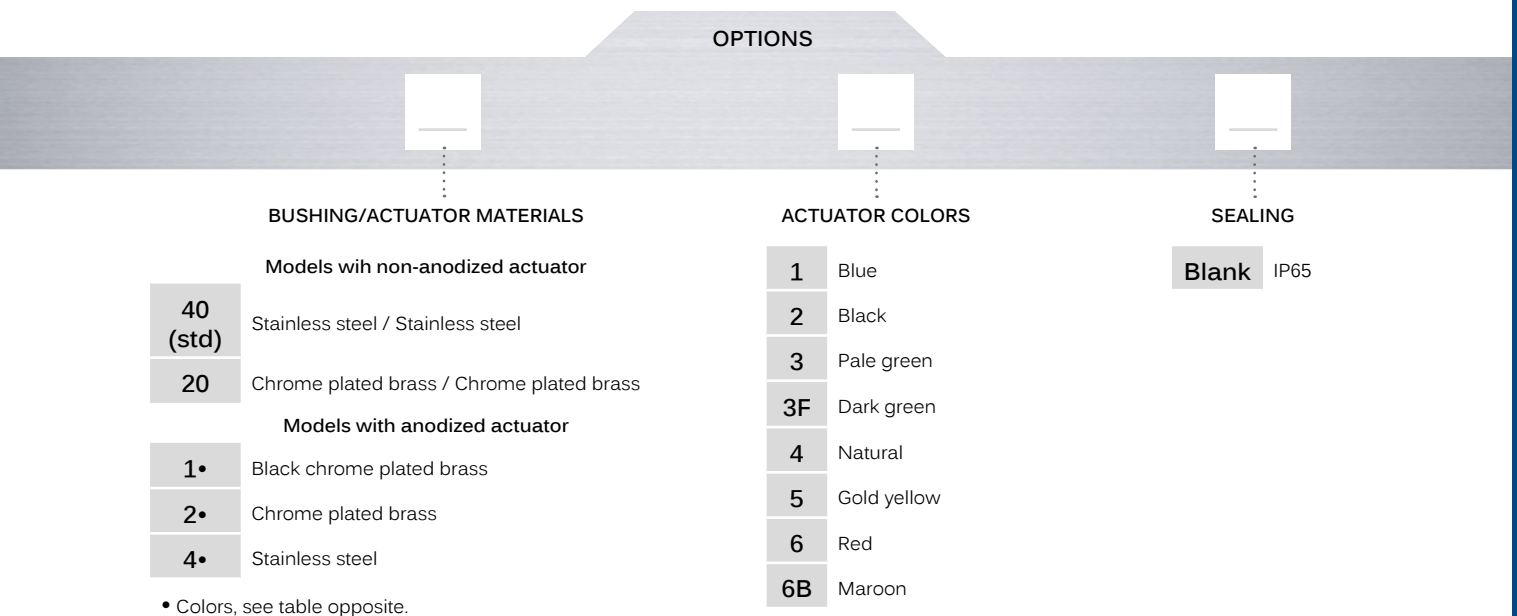
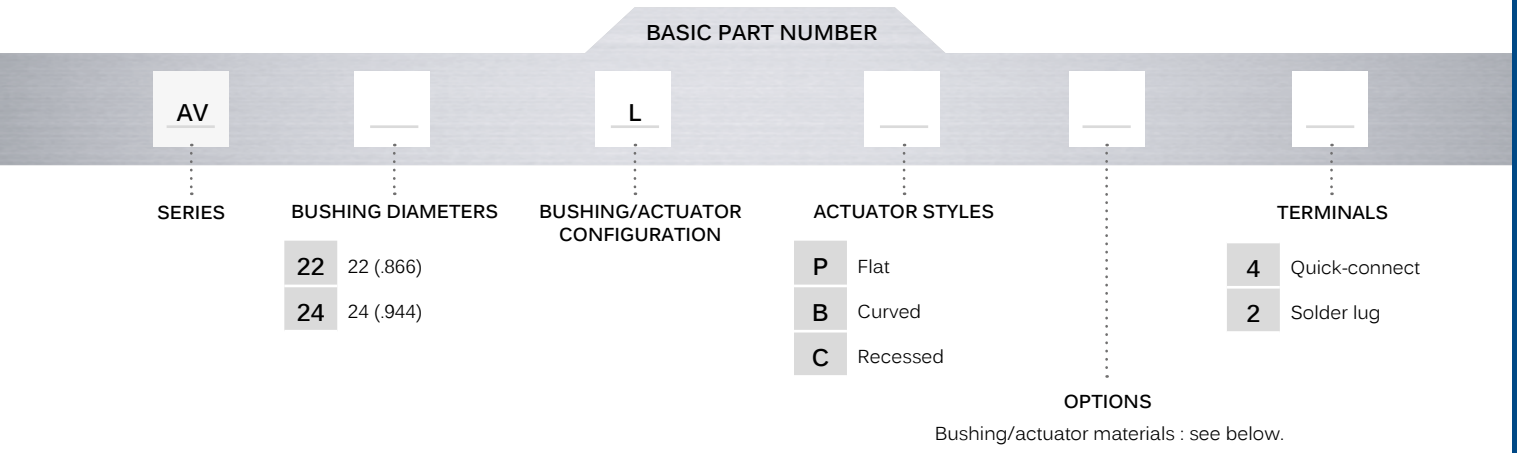
MOUNTING

- Panel cut-out : Ø 22.2 mm (.874) or Ø 24.2 mm (.952)
- Min. pitch for matrix mounting :
30 mm x 30 mm (1.181x1.181)
or 33 mm x 33 mm (1.299x1.299)

AV series


Security pushbutton switches •
 Ø 22 or 24 mm • with large actuator • momentary NC+NO


BUILD YOUR PART NUMBER



ABOUT THIS SERIES

On the following pages, you will find successively basic part numbers of switches and options in the same order as in above chart.

 **Notice:** please note that not all combinations of above numbers are available. Refer to the following pages for further information.

 **Mounting accessories:** standard hardware supplied : 1 hex nut and 1 O-ring. Standard and special hardware is presented in the "Hardware" section of website.

AV series

Security pushbutton switches •
 Ø 22 or 24 mm • with large actuator • momentary NC+NO

BUSHING Ø 22 (.866) - FLAT ACTUATOR



Quick-connect terminals

AV22LP••4



Solder lug terminals

AV22LP••2



BUSHING Ø 22 (.866) - CURVED OR RECESSED ACTUATOR



CURVED ACTUATOR
Quick-connect terminals

AV22LB••4



Solder lug terminals

AV22LB••2



RECESSED ACTUATOR
Quick-connect terminals

AV22LC••4



Solder lug terminals

AV22LC••2



BUSHING Ø 24 (.944) - FLAT ACTUATOR LOW PROFILE



Quick-connect terminals

AV24LP••4



Solder lug terminals

AV24LP••2



BUSHING Ø 24 (.944) - CURVED OR RECESSED ACTUATOR - LOW PROFILE



CURVED ACTUATOR
Quick-connect terminals

AV24LB••4



Solder lug terminals

AV24LB••2



RECESSED ACTUATOR
Quick-connect terminals

AV24LC••4



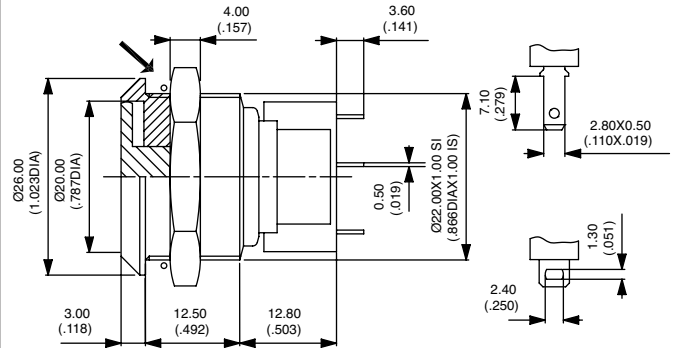
Solder lug terminals

AV24LC••2



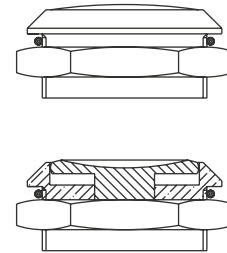
→ O-RING

Hex nut 25 (.984) across flats



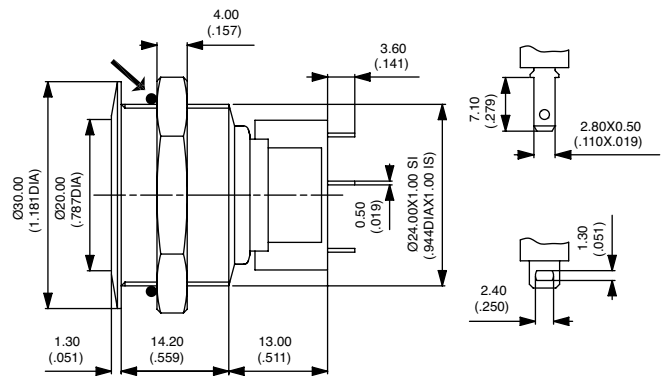
→ O-RING

Hex nut 25 (.984) across flats



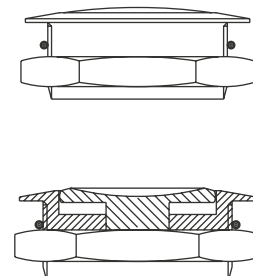
→ O-RING

Hex nut 27 (1.062) across flats



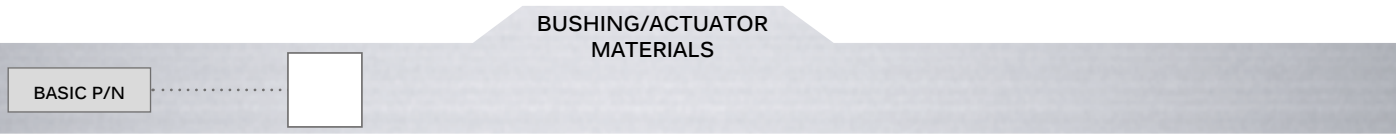
→ O-RING

Hex nut 27 (1.062) across flats



AV series

Security pushbutton switches •
Ø 22 or 24 mm • with large actuator • momentary NC+NO



| MODELS WITH NON-ANODIZED ACTUATOR | | |
|-----------------------------------|---------------------|---------------------|
| CODE | BUSHING | ACTUATOR |
| 40 (std) | Stainless steel | Stainless steel |
| 20 | Chrome plated brass | Chrome plated brass |

| MODELS WITH ANODIZED ACTUATOR | | |
|-------------------------------|---------------------------|--|
| CODE | BUSHING | ACTUATOR |
| 1• | Black chrome plated brass | Replace • with one of the following codes : 1 : blue - 2 : black - 3 : pale green - 3F : dark green- 4 : natural - 5 : gold yellow - 6 : red - 6B : marron |
| 2• | Chrome plated brass | |
| 4• | Stainless steel | |