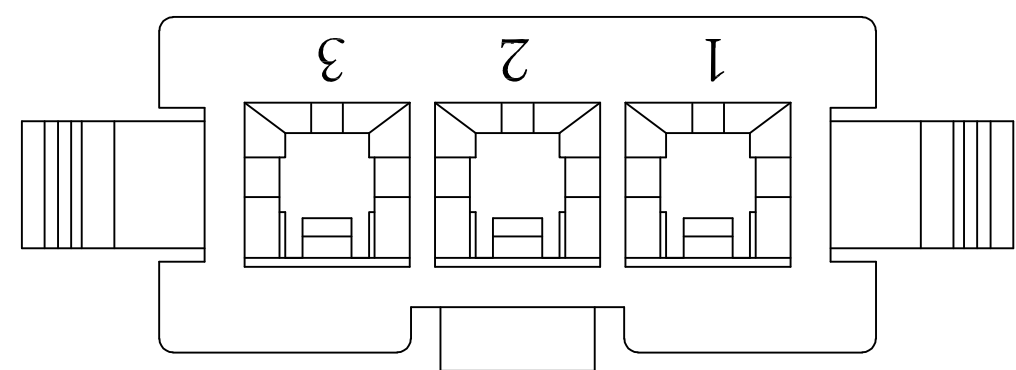
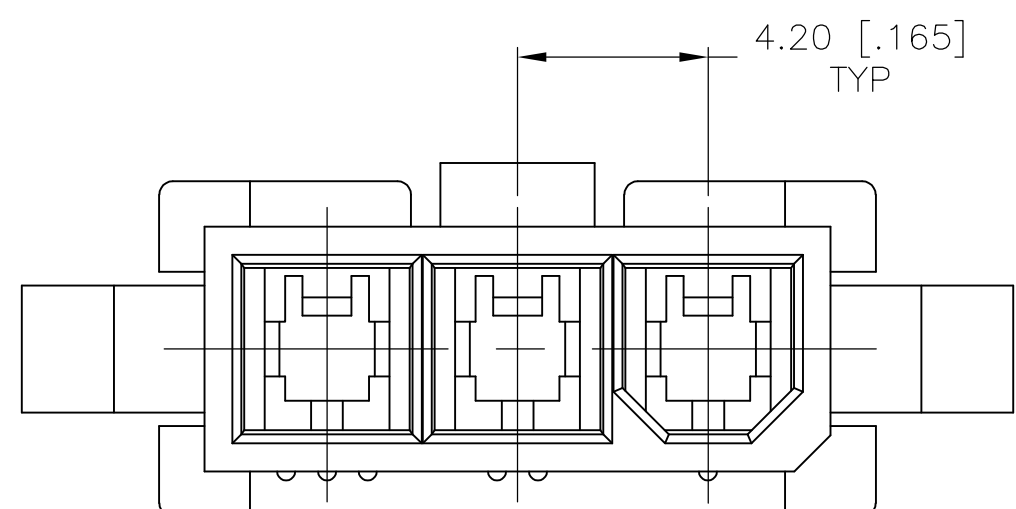
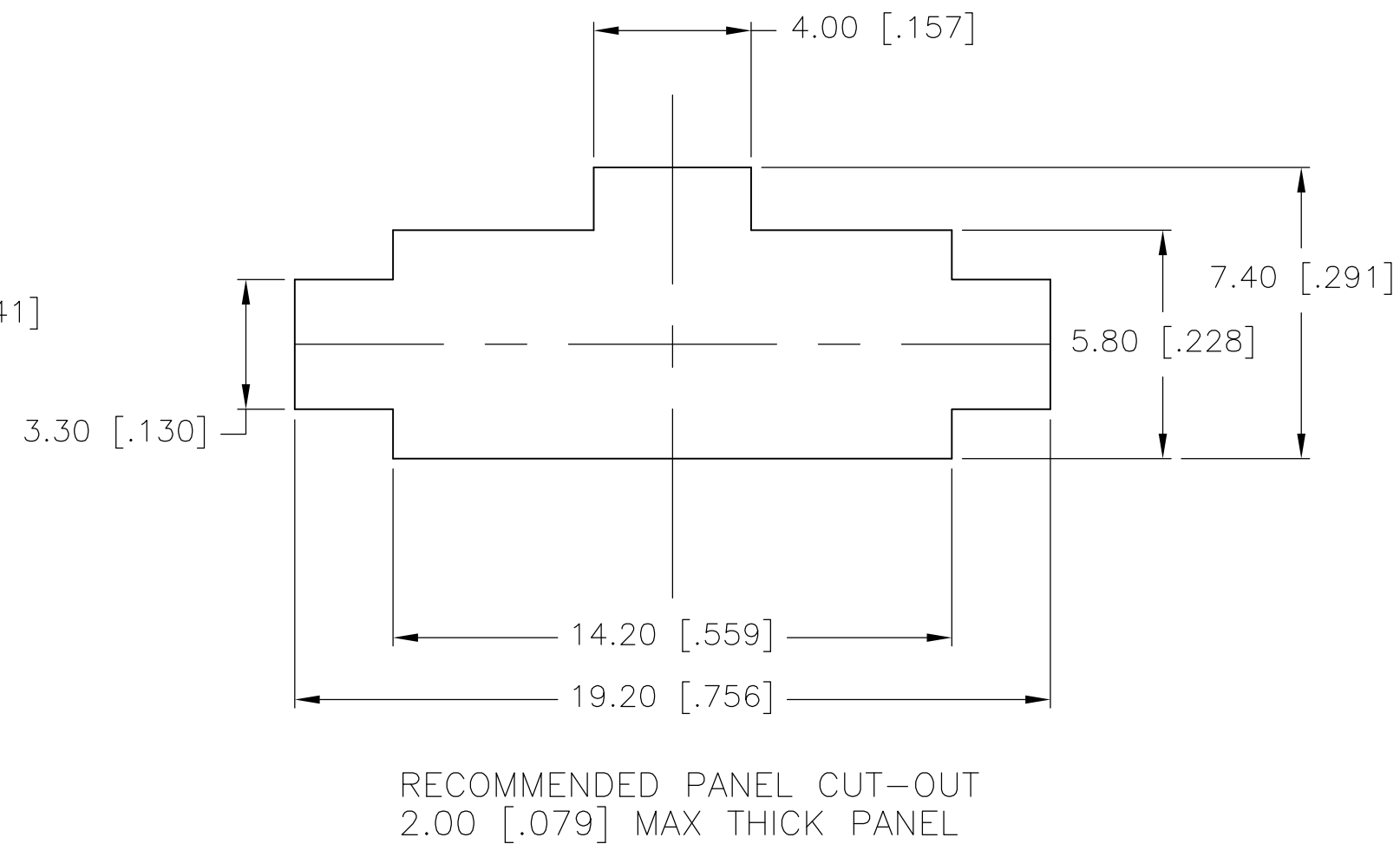
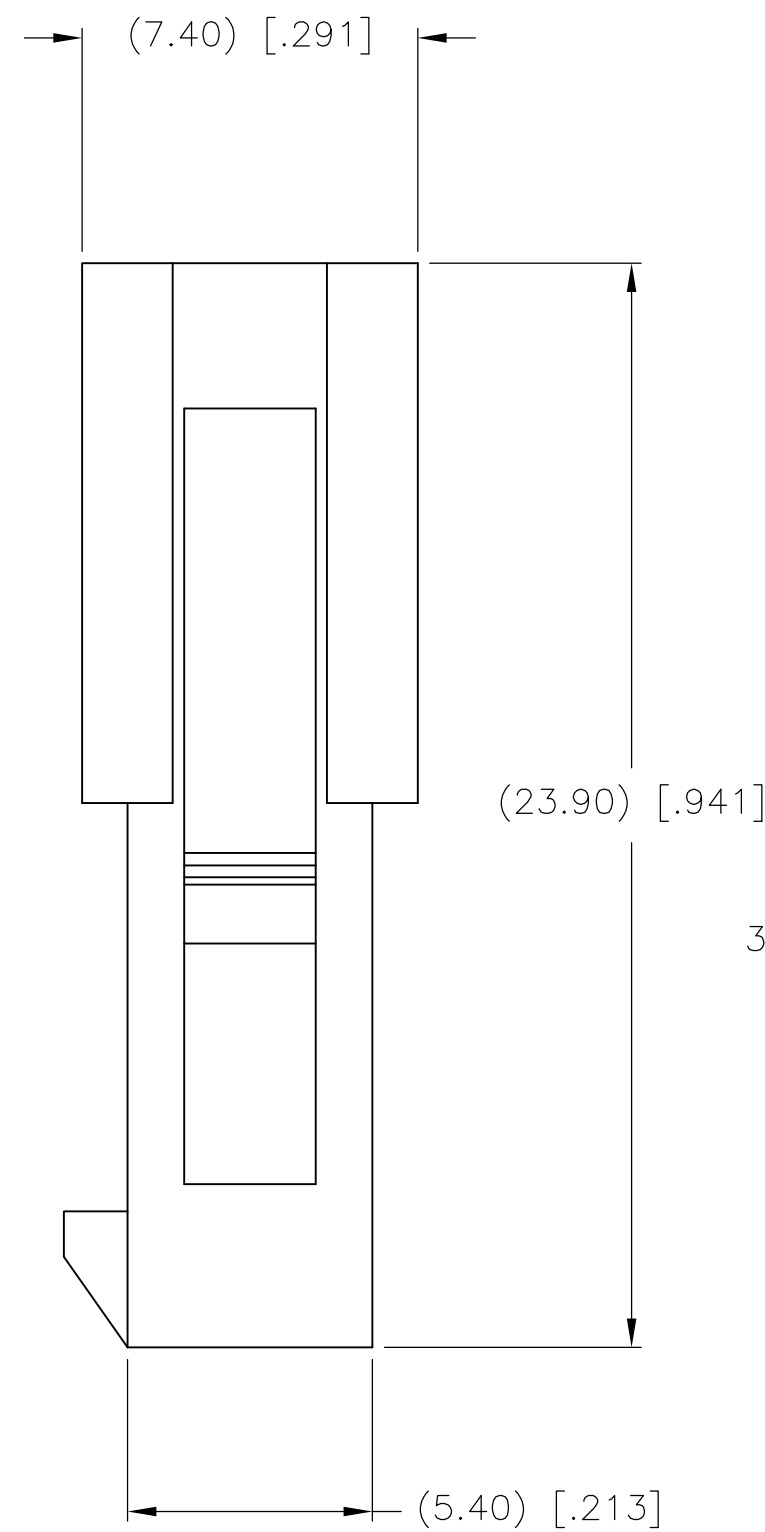
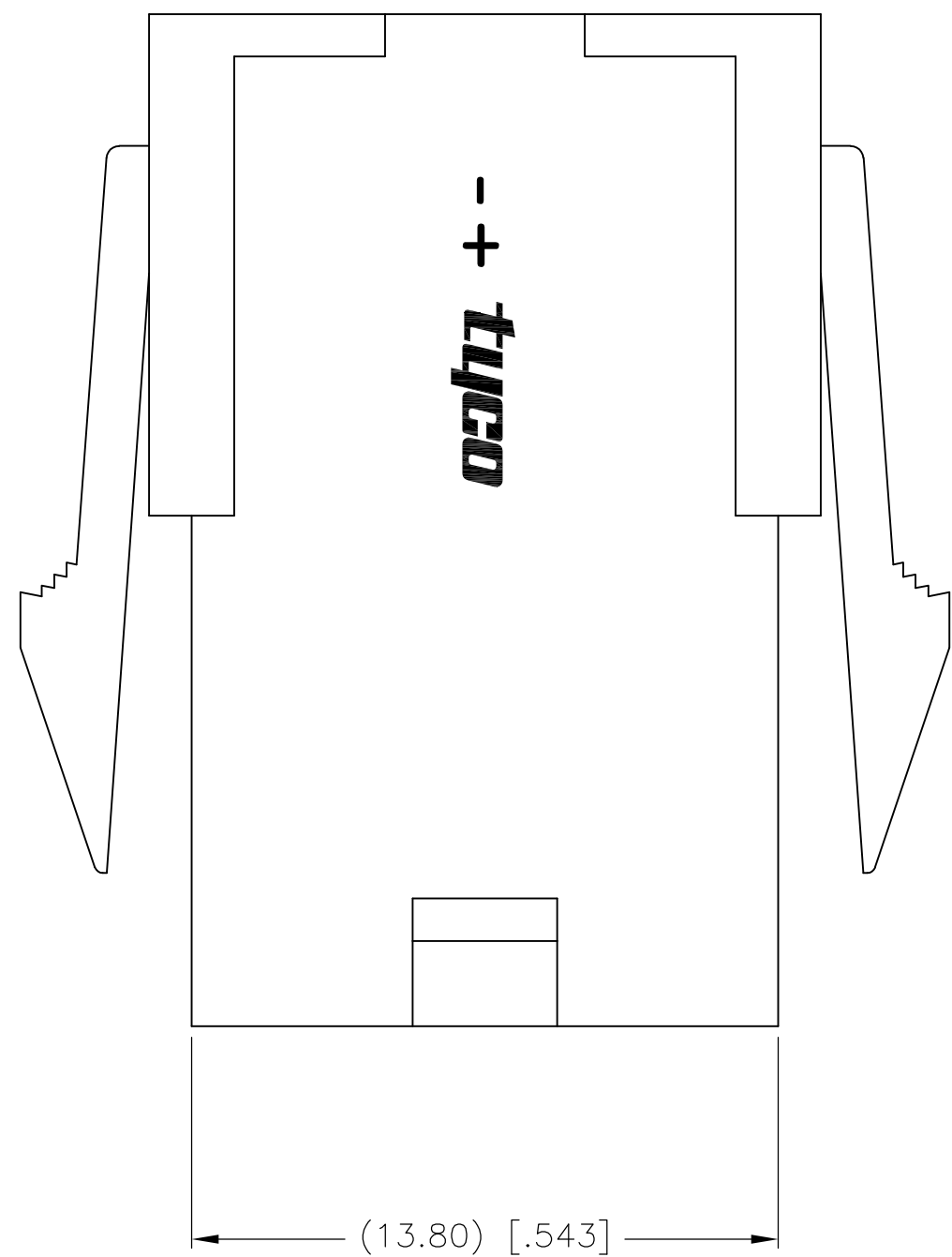


THIS DRAWING IS UNPUBLISHED. RELEASED FOR PUBLICATION
 © COPYRIGHT - By - ALL RIGHTS RESERVED.

LOC		DIST		REVISIONS			
P	LTR	DESCRIPTION		DATE	DWN	APVD	
CM	00	A1	REVISED PER ECO-11-011469		03JUN11	HMR	SM



1. PANEL MUST BE PUNCHED SO THAT THE HOUSING ENTERS THE PANEL IN THE SAME DIRECTION AS THE PUNCH.
2. GLOW WIRE APPROVED, CONTACT TYCO ELECTRONICS ENGINEERING FOR SPECIFICATION.



METRIC

THIS DRAWING IS A CONTROLLED DOCUMENT.		DWN K. WHITAKER 10APR2008			2029110-3	
DIMENSIONS: mm [INCHES]		CHK C. CASH 10APR2008			PART NO.	
TOLERANCES UNLESS OTHERWISE SPECIFIED:		APVD C. CASH 10APR2008	NAME PLUG, 3 POS, VAL-U-LOK(TM)		RESTRICTED TO	
0 PLC ± 1 PLC ± 2 PLC ± 0.13 [.005] 3 PLC ± 4 PLC ± ANGLES ± 0°30' FINISH		APPLICATION SPEC	SIZE A2	CAGE CODE 00779	DRAWING NO C=2029110	SCALE 6:1
MATERIAL NYLON 66 UL94V-2		WEIGHT	CUSTOMER DRAWING		SHEET 1 of 1	REV A1