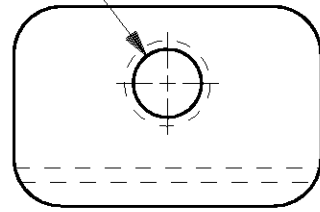


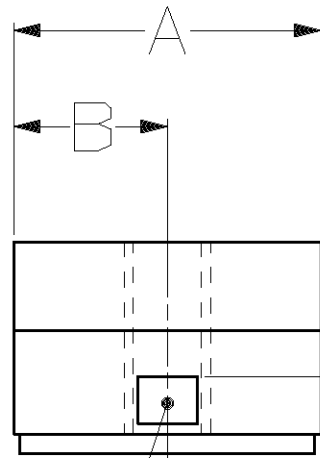
THIS DRAWING IS UNPUBLISHED. RELEASED FOR PUBLICATION, 19 .
 © COPYRIGHT 19 BY AMP INCORPORATED. ALL INTERNATIONAL RIGHTS RESERVED.

LOC	DIST	P	F	REVISIONS				
				ZONE	LTR	DESCRIPTION	DATE	APPD
GP	00				E	REV PER 0U1D-0274-00	11/05/01	JR

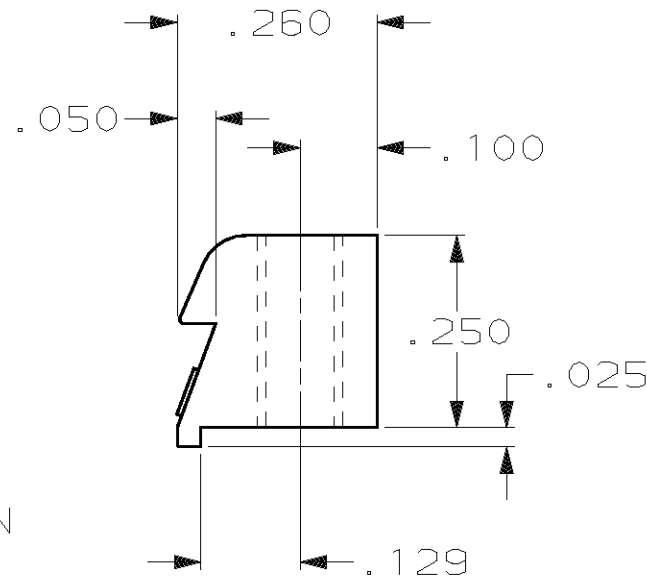
THREAD
SEE TABLE



LATCHING BLOCK
QTY: 2
MATL: ZINC ALLOY

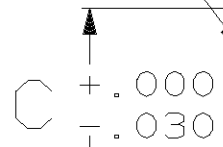


.115
.060 REF



THREAD
SEE TABLE

THREAD IDENTIFICATION
LOCATED IN THIS AREA



PAN HEAD SCREW
QTY: 2
MATL: COLD ROLLED STEEL
PER ASTM A108
FINISH: ZINC PLATED PER ASTM
B633, TYPE III, CLASS
SC1, CLEAR CHROMATE

.071 MAX

.236 MAX

1. PARTS PACKAGED UNASSEMBLED.
2. PARTS PACKAGED AS A UNIT KIT.
3. PACKAGED 50 UNIT KITS PER PACKAGE.
4. OBSOLETE PART NUMBER.

3	M3X0.5	.236	.200	.400	1 THRU 4	4	745007-7
2	#4-40	.188	.265	.530	5	4	745007-6
2	#4-40	.188	.200	.400	1 THRU 4		745007-5
2	M3X0.5	.177	.265	.530	5	4	745007-4
2	M3X0.5	.177	.200	.400	1 THRU 4	4	745007-3
2	M3X0.5	.236	.265	.530	5	4	745007-2
2	M3X0.5	.236	.200	.400	1 THRU 4		745007-1
PACKAGING	THREAD SIZE	C	B	A	SIZE		PART NO

DO NOT SCALE PRINT. UNLESS SPECIFIED DIMENSIONS IN INCHES TOLERANCES ON: 2 PLC DEC ± - 3 PLC DEC ± .010 ANGLES ± -	DR 5-20-88 C RICHARD CHK 5-20-88 S WELDON APPD 5-23-88 V KUMAR APPD 5-20-88 R WHYNE PRODUCT SPEC - APPLICATION SPEC - WEIGHT -	<p>AMP AMP INCORPORATED Harrisburg, Pa. 17105</p> <p>NAME KIT, LATCHING BLOCK, R5 449 TYPE, WITH SCREWS, AMPLIMITE®</p> <p>SIZE B FSCM NO 00779 DRAWING NO 745007 SCALE 4:1 SHEET 1 OF 1</p>
MATERIAL SEE CALLOUTS		
FINISH SEE CALLOUTS		