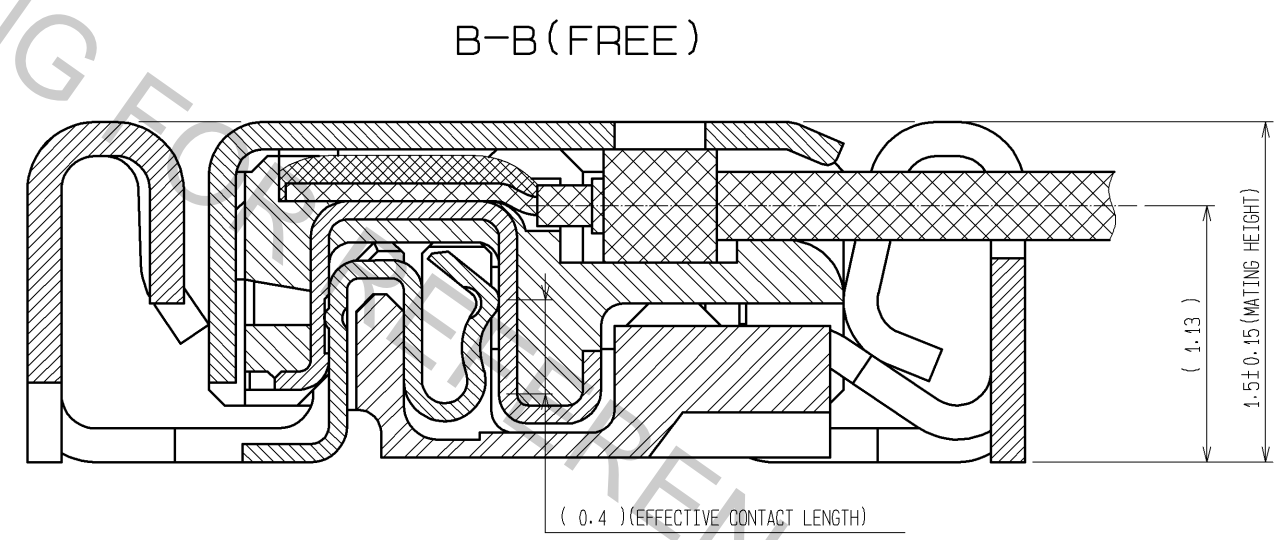
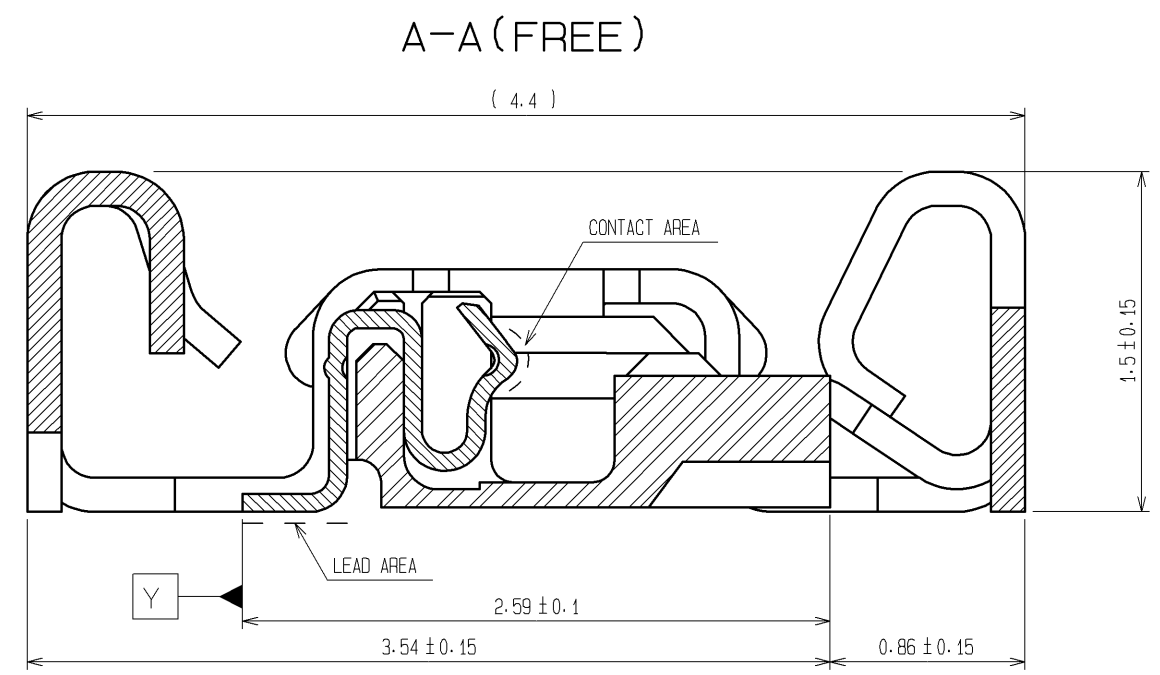


- NOTES**
- LEAD CO-PLANARITY SHALL BE 0.1mm MAX.
  - STIFFENER IS REQUIRED FOR MOUNTING ONTO FPC IN ORDER TO AVOID STRESS BY FPC SLACKING TO MOUNTED CONNECTOR.
  - LOT No. INFORMATION IS SHOWN IN THE TABLE.  
EXAMPLE: 8GFD  
-YEAR:2008 MONTH:July DAY:15 LINE No. :4
  - UNMATING SHALL BE DONE WITH THE SPECIFIC EXTRACTION TOOL.
  - SOLDERING REWORK IS NOT POSSIBLE SINCE SOLDERING LEADS ARE COVERED BY METAL SHIELDING.

YEAR		MONTH		DAY						LINE No.	
YEAR	CODE	MONTH	CODE	DAY	CODE	DAY	CODE	DAY	CODE	LINE No.	CODE
10	0	Jan	A	1	1	11	B	21	M	1	A
11	1	Feb	B	2	2	12	C	22	N	2	B
12	2	Mar	C	3	3	13	D	23	P	3	C
13	3	Apr	D	4	4	14	E	24	Q	4	D
14	4	May	E	5	5	15	F	25	R	5	E
15	5	Jun	F	6	6	16	G	26	S	6	F
16	6	Jul	G	7	7	17	H	27	T	7	G
17	7	Aug	H	8	8	18	J	28	U	8	H
08	8	Sep	I	9	9	19	K	29	V	9	I
09	9	Oct	J	10	A	20	L	30	W	10	J
		Nov	K					31	X		
		Dec	L								

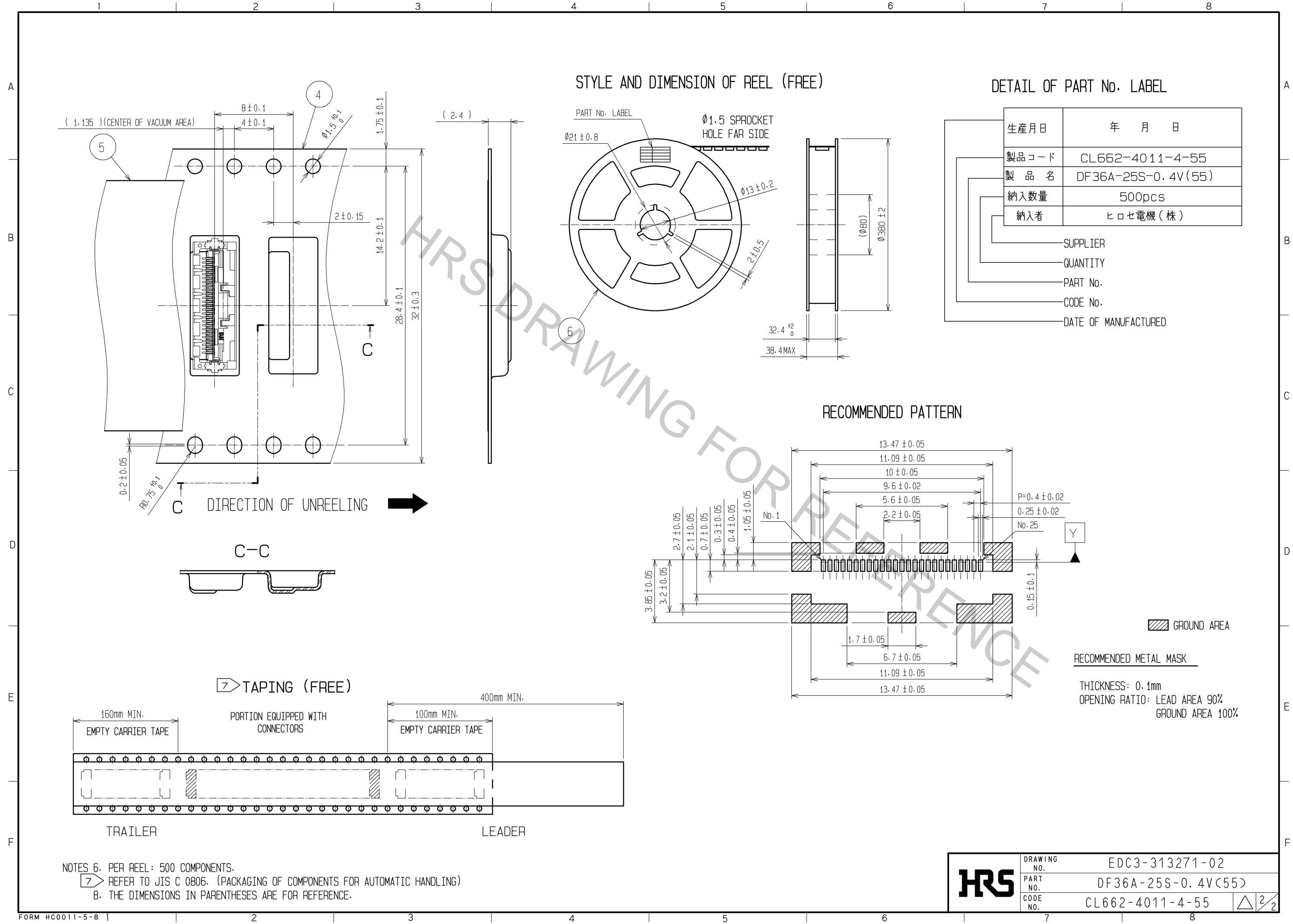


NO.	MATERIAL	FINISH	REMARKS	NO.	MATERIAL	FINISH	REMARKS
2	LCP		UL94V-0, BLACK	6	PS		BLACK
				5	POLYESTER		CLEAR
1	PHOSPHOR BRONZE		CONTACT AREA : Gold PLATING 0.3µm min LEAD AREA : Gold PLATING 0.1µm min UNDER PLATING : Nickel PLATING 2µm min	4	PS		CLEAR
				3	PHOSPHOR BRONZE		WHOLE AREA : Tin PLATING 1µm min UNDER PLATING : Copper PLATING 0.2µm min

UNITS	SCALE	COUNT	DESCRIPTION OF REVISIONS	DESIGNED	CHECKED	DATE
mm	5 : 1	△				
APPROVED : KH. IKEDA			14.11.06	DRAWING NO. EDC3-313271-02		
CHECKED : MH. TSUCHIDA			14.11.06	PART NO. DF36A-25S-0.4V(55)		
DESIGNED : IO. DENPOUYA			14.11.06	CODE NO. CL662-4011-4-55		
DRAWN : YJ. HAGA			14.10.23	1/2		

Apr.1.2017 Copyright 2017 HIROSE ELECTRIC CO., LTD. All Rights Reserved.



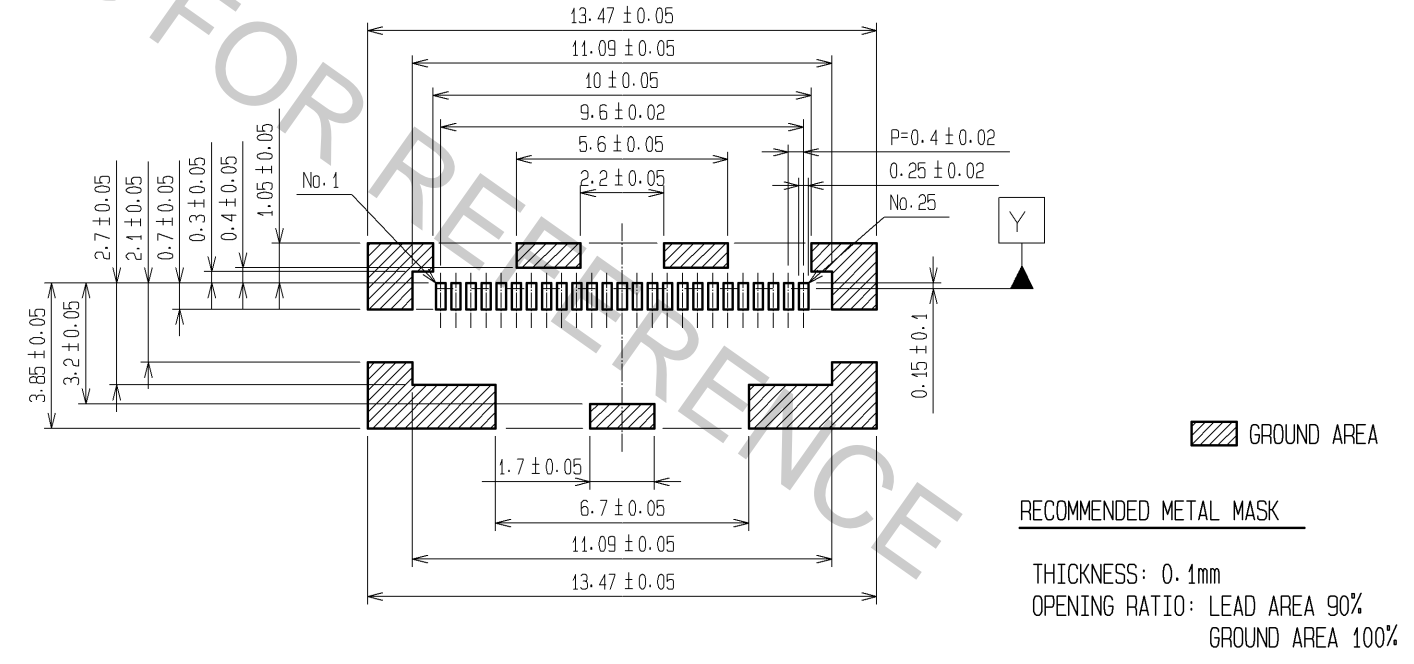
STYLE AND DIMENSION OF REEL (FREE)

DETAIL OF PART No. LABEL

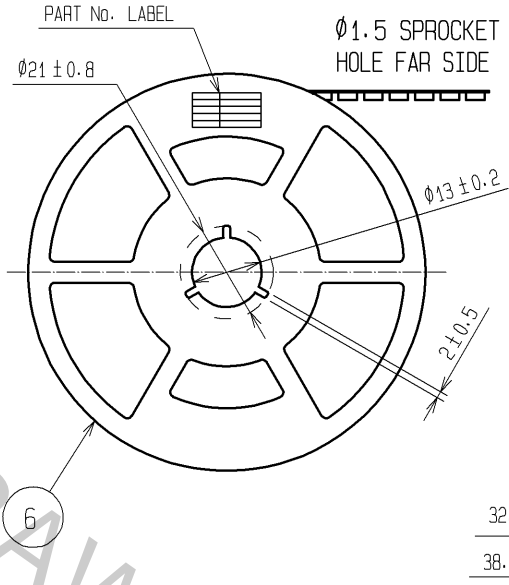
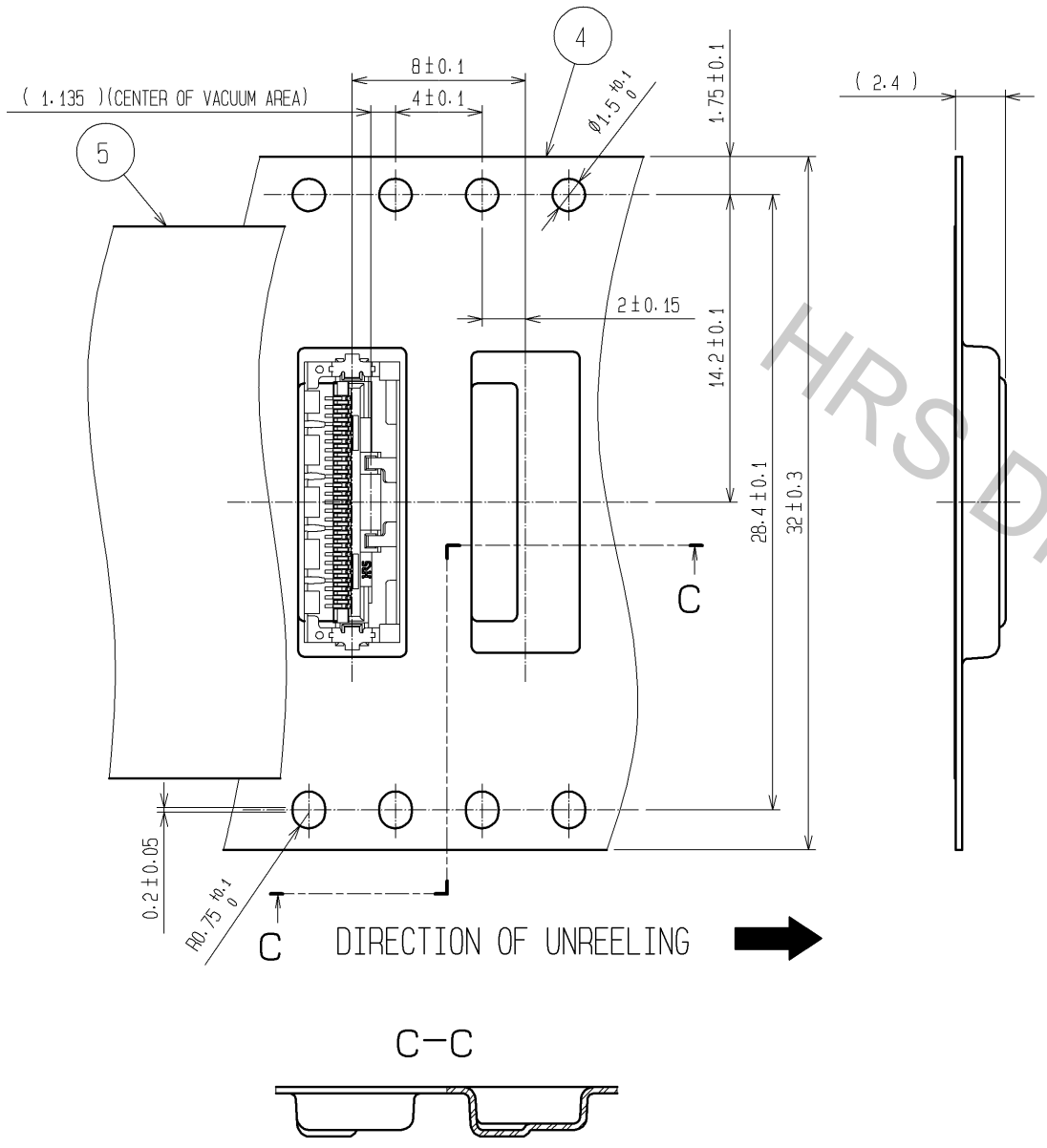
生産月日	年 月 日
製品コード	CL662-4011-4-55
製品名	DF36A-25S-0.4V(55)
納入数量	500pcs
納入者	ヒロセ電機(株)

\_\_\_\_\_ SUPPLIER  
 \_\_\_\_\_ QUANTITY  
 \_\_\_\_\_ PART No.  
 \_\_\_\_\_ CODE No.  
 \_\_\_\_\_ DATE OF MANUFACTURED

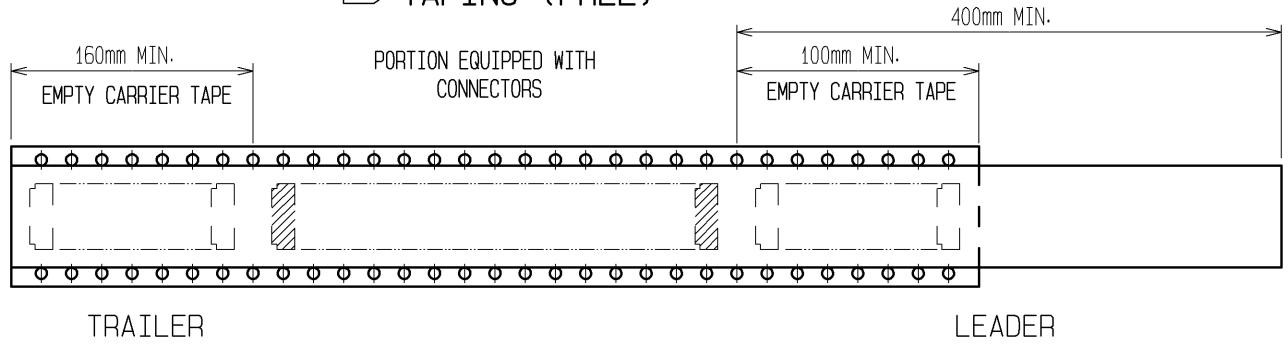
RECOMMENDED PATTERN



**RECOMMENDED METAL MASK**  
 THICKNESS: 0.1mm  
 OPENING RATIO: LEAD AREA 90%  
 GROUND AREA 100%



TAPING (FREE)



NOTES 6. PER REEL: 500 COMPONENTS.  
 7. REFER TO JIS C 0806. (PACKAGING OF COMPONENTS FOR AUTOMATIC HANDLING)  
 8. THE DIMENSIONS IN PARENTHESES ARE FOR REFERENCE.

<b>HRS</b>	DRAWING NO.	EDC3-313271-02
	PART NO.	DF36A-25S-0.4V(55)
	CODE NO.	CL662-4011-4-55
		△ 2/2