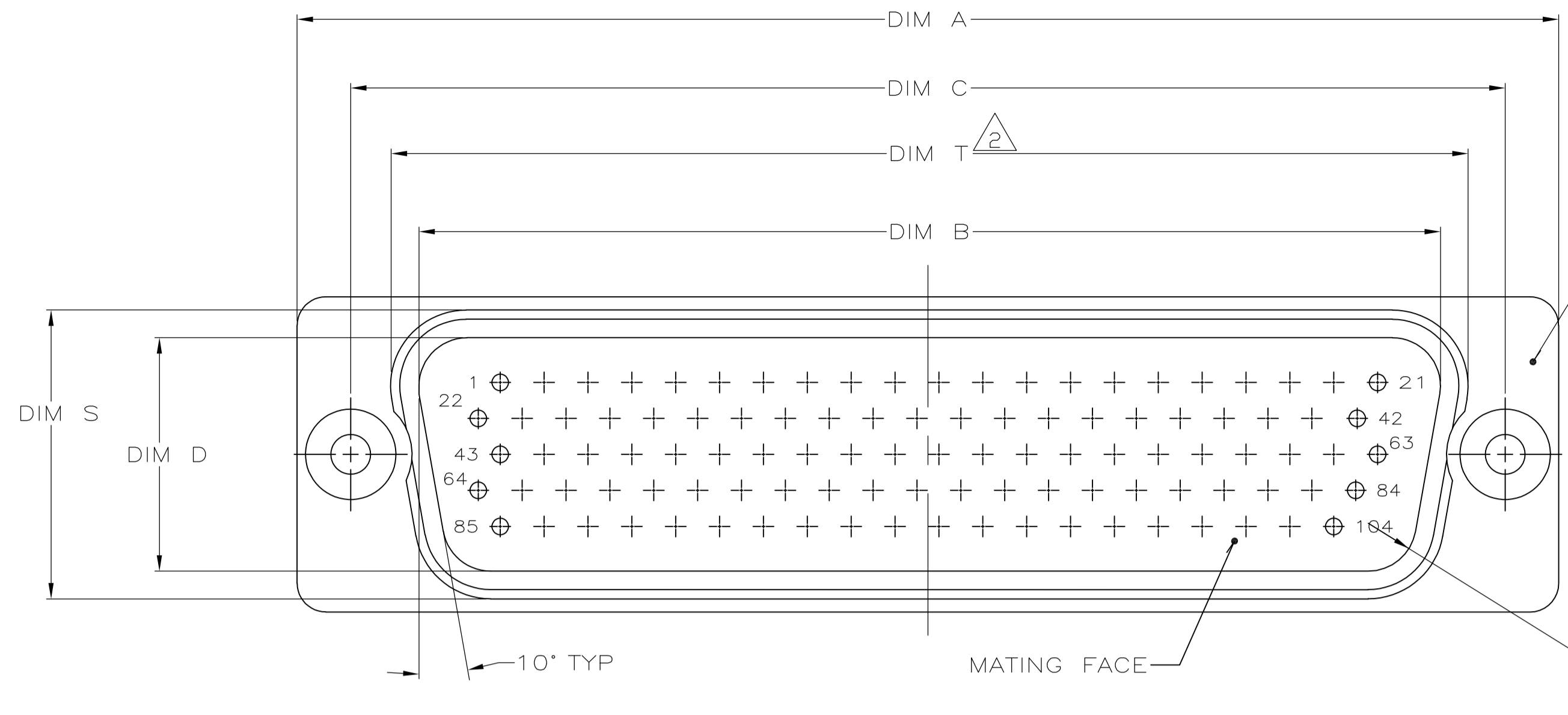


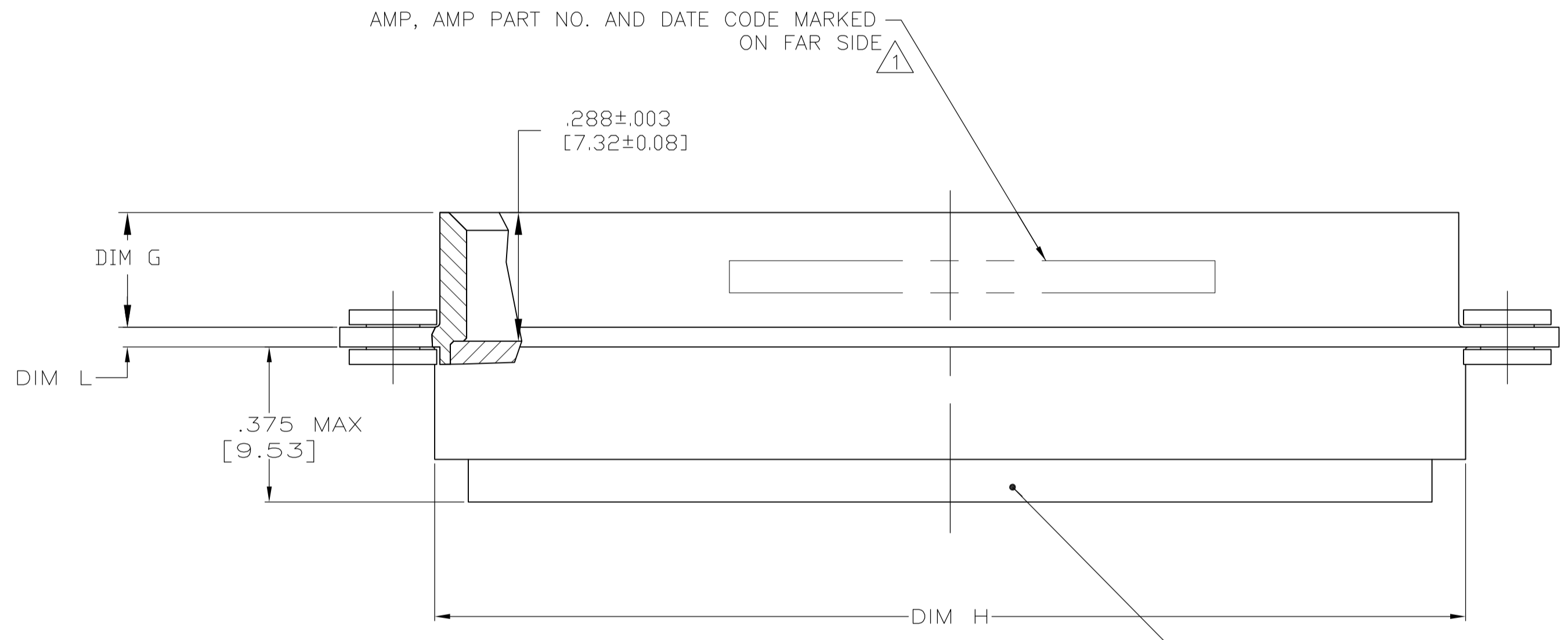
LOC		DIST		REVISIONS				
DF	DO	REV	PER	ECO	DESCRIPTION	DATE	BY	APP'D
G		REV PER	ECO	09-028498		20JAN10	PY	RL



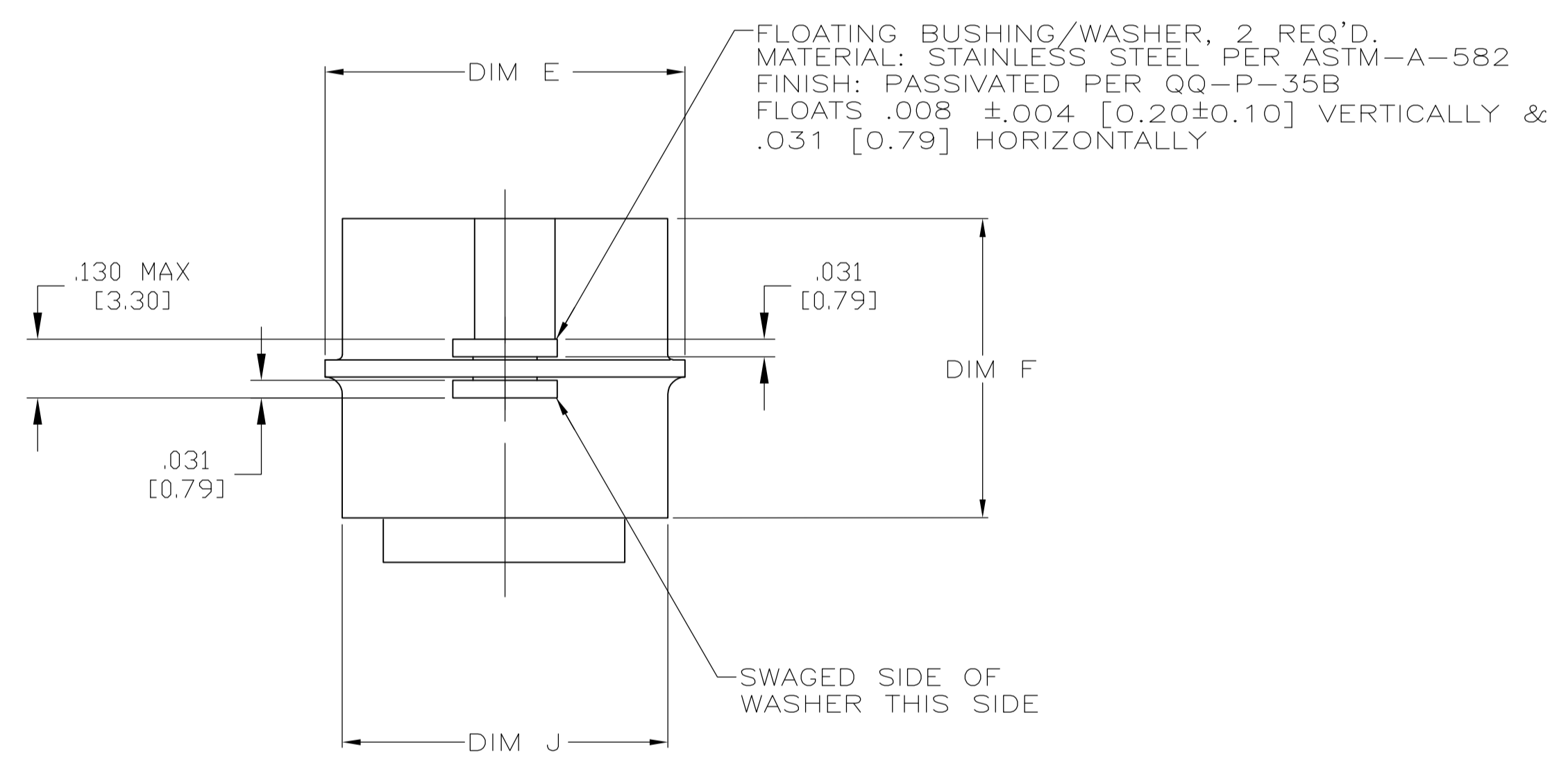
SHELL:
 MATERIAL: ALUMINUM ALLOY PER 6061.
 FINISH: CADMIUM PER QQ-P-416, TYPE II,
 CLASS 2 OVER COPPER PER MIL-C-14550, CLASS 4

- MARKED WITH .047-.062 HIGH CHARACTERS. FAR SIDE REFERS TO THE WIDE SIDE OF THE KEYSTONE. NEAR SIDE REFERS TO THE NARROW SIDE OF THE KEYSTONE. IF PART IS TOO SMALL TO MARK ON FRONT OF SHELL, MARKING CAN BE SPLIT BETWEEN FRONT AND REAR OF SHELL
- FEATURE SHORTENED BY CLEARANCE RADIUS FOR FLOAT BUSHING.

R.104±.002
 [2.64±0.05]



INSERT ASSEMBLY:
 MAT'L: POLYPHENYLENE SULFIDE (PPS)
 GST-40F PER MIL-M-24519 OR GLASS FILLED
 POLYESTER TPES013G30 PER ASTM D5927



2.340 [59.44]	.610 [15.49]	.044 [1.12]	.614 [15.59]	2.319 [58.90]	.260 [6.60]	.569 [14.45]	.683 [17.35]	.509 [12.93]	2.505 [63.63]	2.218 [56.34]	2.744 [69.70]	104	6	1757207-6
2.192 [55.68]	.543 [13.79]	.044 [1.12]	.556 [14.12]	2.195 [55.75]	.260 [6.60]	.569 [14.45]	.620 [15.75]	.446 [11.33]	2.411 [61.24]	2.085 [52.96]	2.650 [67.31]	78	5	1757207-5
1.650 [41.91]	.437 [11.10]	.044 [1.12]	.444 [11.28]	1.642 [41.71]	.260 [6.60]	.569 [14.45]	.509 [12.93]	.327 [8.31]	1.857 [47.17]	1.527 [38.78]	2.103 [53.42]	44	3	1757207-3
.782 [19.86]	.437 [11.10]	.035 [0.89]	.444 [11.28]	.776 [19.71]	.260 [6.60]	.569 [14.45]	.499 [12.67]	.327 [8.31]	.989 [25.12]	.659 [16.74]	1.228 [31.19]	15	1	1757207-1
T	S	L	J	H	G	F	E	D	C	B	A	NO OF POS	SHELL SIZE	PART NUMBER

THIS DRAWING IS A CONTROLLED DOCUMENT.

DIMENSIONS: INCHES	TOLERANCES UNLESS OTHERWISE SPECIFIED:	DIN C.C. THOMAS 02MAR2006	Tyco Electronics Corporation Harrisburg, PA 17105-3608
0 PLC ± -	1 PLC ± -	3-3-06	
2 PLC ± -	3 PLC ± .005	D. MILLER 3-3-06	PLUG ASSEMBLY, AMPLIMITE, SERIES 90, BLINDMATE
4 PLC ± -	ANGLES ± -		
MATERIAL	FINISH	WEIGHT	RESTRICTED TO
		A1 00779 1757207	
CUSTOMER DRAWING		SCALE 4:1	SHEET 1 OF 1 REV G