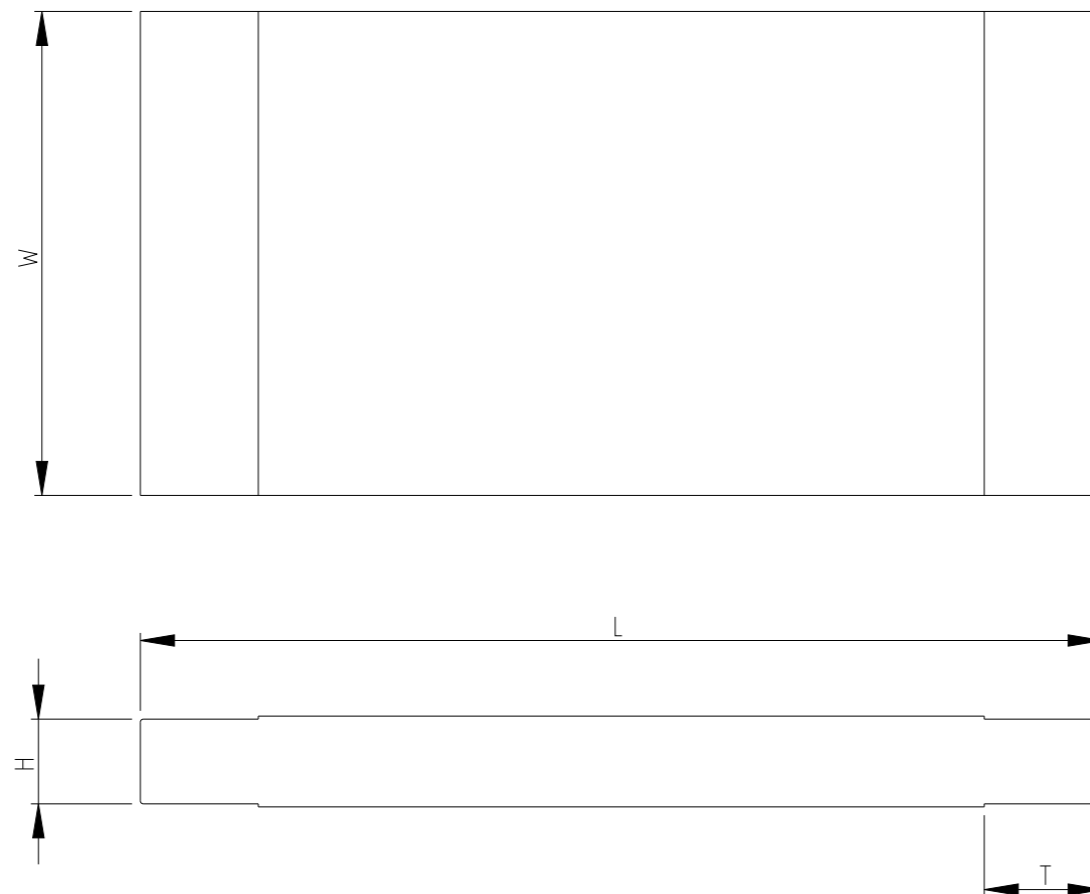
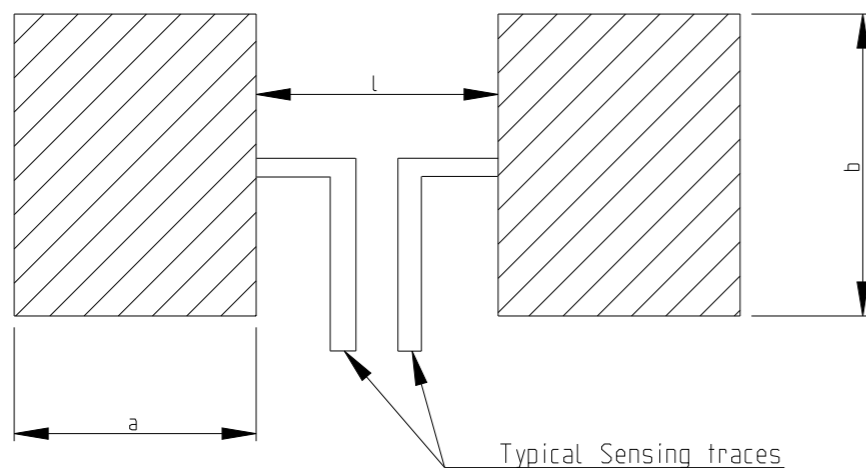


| P | LTR | DESCRIPTION | DATE | DWN | APVD |
|---|-----|---------------------------|-----------|-----|------|
| | BA1 | REVISED PER ECO-11-005150 | 11MAY2011 | RK | HMR |
| | BA2 | | 19JUL2022 | LG | AP |
| | | | | | |
| | | | | | |

FOR FURTHER INFORMATION SEE DATA SHEET FOR SERIES TL3A - SMD LOW-OHMIC CURRENT SENSE RESISTORS

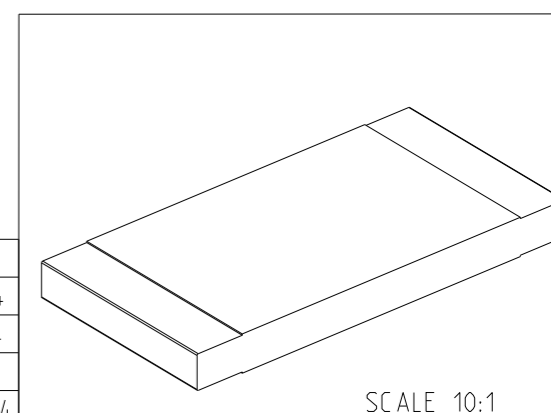


SOLDER PAD DIMENSIONS



| Resistance Range | a | b | l |
|------------------|------|------|------|
| R0005 ~ R00099 | 3.05 | 3.68 | 1.27 |
| R001 ~ R0049 | | | 3.18 |
| R005 ~ R0069 | 2.11 | | 4.06 |
| R007 ~ R50 | 1.65 | | |

| Resistance Range | L | W | H | T |
|------------------|--------------|--------------|---------------|---------------|
| R0005 ~ R00099 | 6.35 ± 0.254 | 3.18 ± 0.254 | 0.635 ± 0.254 | 2.72 ± 0.254 |
| R001 ~ R0049 | | | | 2.21 ± 0.254 |
| R005 ~ R0069 | | | | 1.19 ± 0.254 |
| R007 ~ R50 | | | | 0.672 ± 0.254 |



THIS DRAWING IS A CONTROLLED DOCUMENT.

DWN SUBHASH.M 07JAN2009
 CHK PRAKASH.S 07JAN2009
 APVD STEPHEN.P 07JAN2009

TE TE Connectivity

NAME SMD LOW-OHMIC CURRENT SENSE RESISTORS TYPE TL3A SERIES

PRODUCT SPEC -
 APPLICATION SPEC -
 WEIGHT -

SIZE A3 CAGE CODE 00779 DRAWING NO C=1625827 RESTRICTED TO -

MATERIAL material_2 FINISH finish_spec_2

CUSTOMER DRAWING SCALE 20:1 SHEET 1 OF 3 REV BA2

REVISIONS

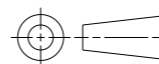
| P | LTR | DESCRIPTION | DATE | DWN | APVD |
|---|-----|-------------|------|-----|------|
| - | | SEE SHEET 1 | - | - | - |
| | | | | | |
| | | | | | |

SCHEDULE

| TCPN | CATALOGUE NUMBER | PART DESCRIPTION | PART STATUS |
|-------------|------------------|--------------------|--------------|
| 1625827-1 | TL3AR005F | TL3A R005 1% | PRODUCTION |
| 1625827-2 | TL3AR006FTDG | TL3A R006 1% 2K RL | PRODUCTION |
| 1625827-3 | TL3AR015F | TL3A R015 1% | PRODUCTION |
| 1625827-4 | TL3AR018F | TL3A R018 1% | PRODUCTION |
| 1625827-5 | TL3AR01F | TL3A R01 1% | PRODUCTION |
| 1625827-6 | TL3AR022F | TL3A R022 1% | PRODUCTION |
| 1625827-7 | TL3AR025FTDG | TL3A R025 1% 2K RL | PRODUCTION |
| 1625827-8 | TL3AR033F | TL3A R033 1% | PRODUCTION |
| 1625827-9 | TL3AR047F | TL3A R047 1% | PRODUCTION |
| 1-1625827-0 | TL3AR051F | TL3A R051 1% | PRODUCTION |
| 1-1625827-1 | TL3AR068F | TL3A R068 1% | PRODUCTION |
| 1-1625827-2 | TL3AR075F | TL3A R075 1% | PRODUCTION |
| 1-1625827-3 | TL3AR082FTDG | TL3A R082 1% 2K RL | PRODUCTION |
| 1-1625827-4 | TL3AR10FTDG | TL3A R10 1% 2K RL | PRODUCTION |
| 1-1625827-5 | TL3AR027FTDG | TL3A R027 1% 2K RL | PRODUCTION |
| 1-1625827-6 | TL3AR039FTDG | TL3A R039 1% 2K RL | PRODUCTION |
| 1-1625827-7 | TL3AR15FTDG | TL3A R15 1% 2K RL | PRODUCTION |
| 1-1625827-8 | TL3AR33FTDG | TL3A R33 1% 2K RL | DISCONTINUED |

THIS DRAWING IS A CONTROLLED DOCUMENT.

DIMENSIONS:
mm



TOLERANCES UNLESS OTHERWISE SPECIFIED:

| | |
|--------|------|
| 0 PLC | ±0.2 |
| 1 PLC | ±0.1 |
| 2 PLC | ± |
| 3 PLC | ± |
| 4 PLC | ± |
| ANGLES | ±5° |

MATERIAL

material_2

FINISH

finish_spec_2

DWN SUBHASH.M 07JAN2009

CHK PRAKASH.S 07JAN2009

APVD STEPHEN.P 07JAN2009

PRODUCT SPEC

APPLICATION SPEC

WEIGHT

-

CUSTOMER DRAWING



TE Connectivity

NAME
SMD LOW-OHMIC CURRENT SENSE
RESISTORS TYPE TL3A SERIES

| | | | |
|------|-----------|------------|---------------|
| SIZE | CAGE CODE | DRAWING NO | RESTRICTED TO |
|------|-----------|------------|---------------|

| | | | |
|----|-------|-----------|---|
| A3 | 00779 | ©=1625827 | - |
|----|-------|-----------|---|

| | | | |
|-------|-------|----|-----|
| SCALE | SHEET | OF | REV |
| 20:1 | 2 | 3 | BA2 |

REVISIONS

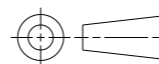
| P | LTR | DESCRIPTION | DATE | DWN | APVD |
|---|-----|-------------|------|-----|------|
| - | | SEE SHEET 1 | - | - | - |
| | | | | | |
| | | | | | |

SCHEDULE

| TCPN | CATALOGUE NUMBER | PART DESCRIPTION | PART STATUS |
|-------------|------------------|--------------------|--------------|
| 1-1625827-9 | TL3AR12FTDG | TL3A R12 1% 2K RL | DISCONTINUED |
| 2-1625827-0 | TL3AR001FTDG | TL3A R001 1% 2K RL | PRODUCTION |
| 2-1625827-1 | TL3AR002FTDG | TL3A R002 1% 2K RL | PRODUCTION |
| 2-1625827-2 | TL3AR003FTDG | TL3A R003 1% 2K RL | PRODUCTION |
| 2-1625827-3 | TL3AR004FTDG | TL3A R004 1% 2K RL | PRODUCTION |
| 2-1625827-4 | TL3AR22FTDG | TL3A R22 1% 2K RL | PRODUCTION |
| 2-1625827-5 | TL3AR47FTDG | TL3A R47 1% 2K RL | DISCONTINUED |
| 2-1625827-6 | TL3AR50FTDG | TL3A R50 1% 2K RL | DISCONTINUED |
| 4-1625827-0 | TL3AR005FTDG | TL3A R005 1% 2K RL | PRODUCTION |
| 4-1625827-1 | TL3AR015FTDG | TL3A R015 1% 2K RL | PRODUCTION |
| 4-1625827-2 | TL3AR018FTDG | TL3A R018 1% 2K RL | PRODUCTION |
| 4-1625827-3 | TL3AR01FTDG | TL3A R01 1% 2K RL | PRODUCTION |
| 4-1625827-4 | TL3AR022FTDG | TL3A R022 1% 2K RL | PRODUCTION |
| 4-1625827-5 | TL3AR033FTDG | TL3A R033 1% 2K RL | PRODUCTION |
| 4-1625827-6 | TL3AR047FTDG | TL3A R047 1% 2K RL | PRODUCTION |
| 4-1625827-7 | TL3AR051FTDG | TL3A R051 1% 2K RL | PRODUCTION |
| 4-1625827-8 | TL3AR068FTDG | TL3A R068 1% 2K RL | PRODUCTION |
| 4-1625827-9 | TL3AR075FTDG | TL3A R075 1% 2K RL | PRODUCTION |
| 5-1625827-0 | TL3AR056FTDG | TL3A R056 1% 2K RL | PRODUCTION |
| 5-1625827-1 | TL3AR02FTDG | TL3A R02 1% 2K RL | PRODUCTION |

THIS DRAWING IS A CONTROLLED DOCUMENT.

DIMENSIONS:
mm



TOLERANCES UNLESS OTHERWISE SPECIFIED:

- 0 PLC ±0.2
- 1 PLC ±0.1
- 2 PLC ±-
- 3 PLC ±-
- 4 PLC ±-
- ANGLES ±5°

MATERIAL

material_2

FINISH

finish_spec_2

DWN SUBHASH.M 07JAN2009

CHK PRAKASH.S 07JAN2009

APVD STEPHEN.P 07JAN2009

PRODUCT SPEC

APPLICATION SPEC

WEIGHT

-

CUSTOMER DRAWING



TE Connectivity

NAME
SMD LOW-OHMIC CURRENT SENSE
RESISTORS TYPE TL3A SERIES

SIZE CAGE CODE DRAWING NO RESTRICTED TO

A3 00779 C-1625827

SCALE 20:1 SHEET 3 OF 3 REV BA2