

## DETAILS

<b>Product Number</b>	C15135_STRADA-2X2-T1
<b>Family</b>	Strada
<b>Type</b>	Lens
<b>Color</b>	clear
<b>Diameter</b>	50x50 mm
<b>Height</b>	7,78 mm
<b>Style</b>	rectang
<b>Optic Material</b>	PMMA
<b>Holder Material</b>	
<b>Fastening</b>	pin, screw
<b>Status</b>	production ready
<b>ROHS Compliant</b>	Yes
<b>Date Updated</b>	21/03/2017

## OPTICAL PROPERTIES

LED	Viewing Angle	Light Beam	Efficiency	cd/lm	Connector
XP-L	Asymmetric deg		94 %	1.170	-
XT-E	sim: Asymmetric		sim: 90 %	sim: 1.200	-
XP-G2	Asymmetric deg		94 %	1.500	-
XP-L2	Asymmetric deg		94 %	0.980	-
MHB-A	sim: Asymmetric		sim: 94 %	sim: 0.670	-
H35C1 (LEMWA33)	Asymmetric deg		94 %	1.400	-
LUXEON 5050	Asymmetric deg		94 %	0.980	-
NVSxE21A	asym deg		94 %	2.050	-
NVSW3x9A	Asymmetric deg		94 %	1.300	-
NVSxx19B/NVSxx19C	sim: Asym		sim: 94 %	sim: 1.200	-
Duris S8	sim: Asymmetric		sim: 93 %	sim: 0.850	-
Oslon Square Gen3	Asymmetric deg		94 %	1.400	-
Fortimo FastFlex LED board 2x8 DA G4	Asymmetric deg		94 %	1.400	-
LH351B	Asymmetric deg		94 %	1.320	-
LH351D	sim: asym		sim: 93 %	sim: 0.940	-
RLE G1 49x223mm 4000lm xxx EXC OT	Asymmetric deg		94 %	1.400	-
RLE G1 49x245mm 4000lm xxx EXC OT	Asymmetric deg		94 %	1.400	-
RLE G1 49x121mm 2000lm xxx EXC OT	Asymmetric deg		94 %	1.400	-
RLE G1 49x133mm 2000lm xxx EXC OT	Asymmetric deg		94 %	1.400	-



H G F E D C B A

4

3

2

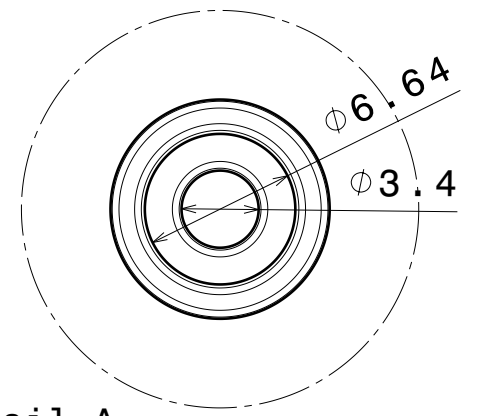
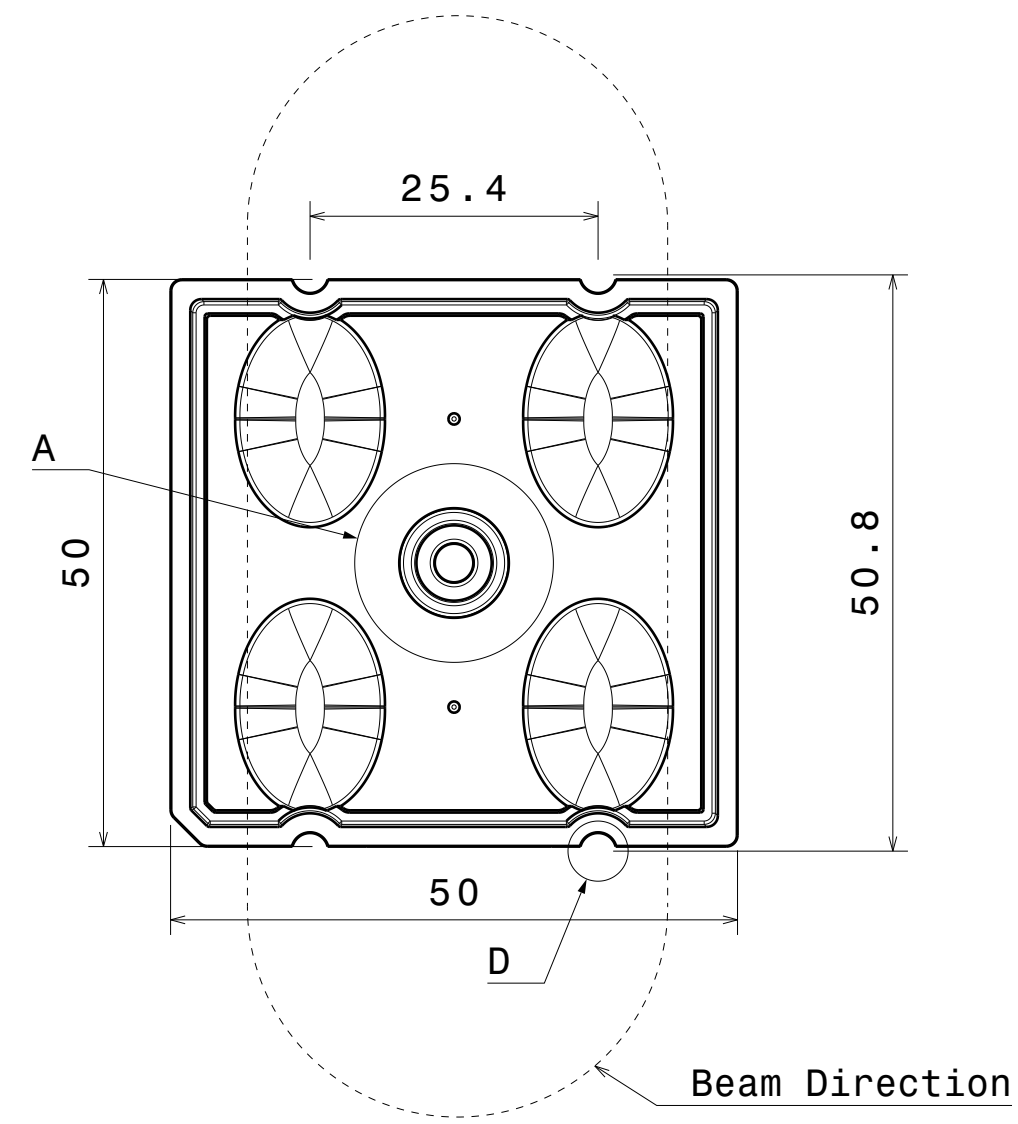
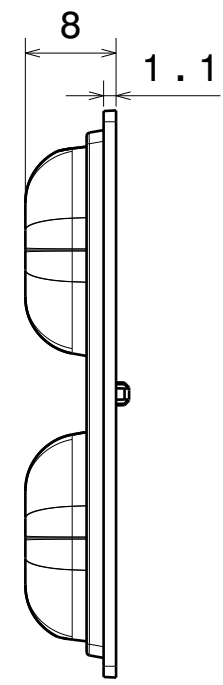
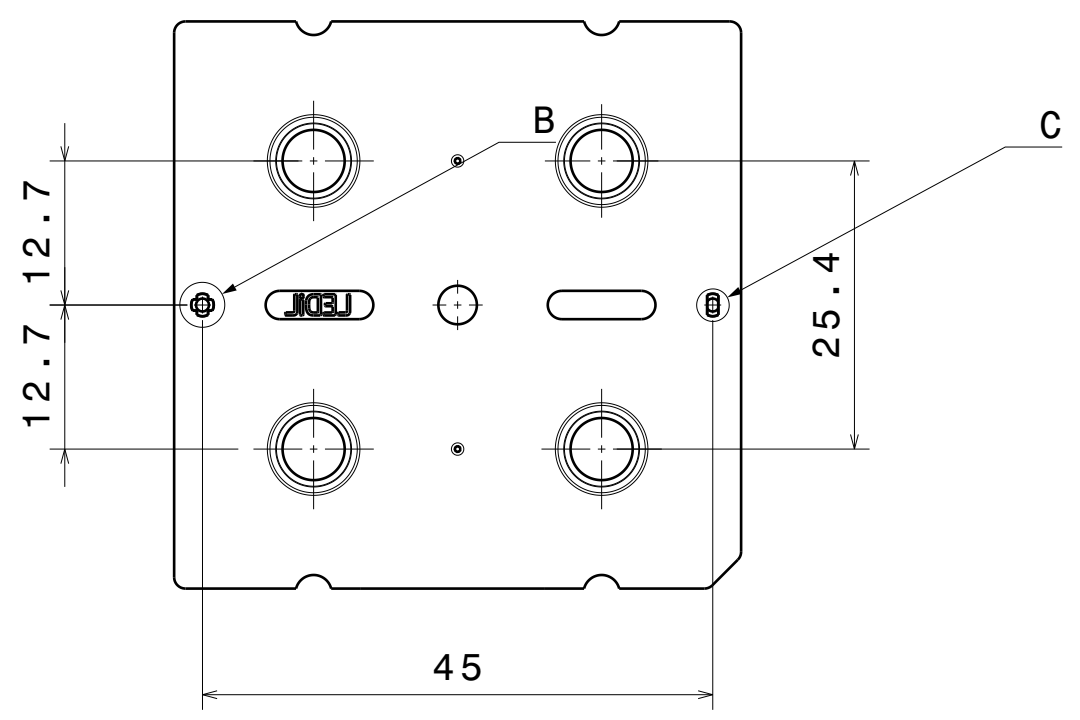
1

4

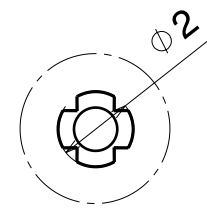
3

2

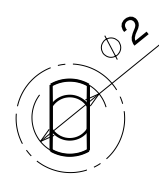
1



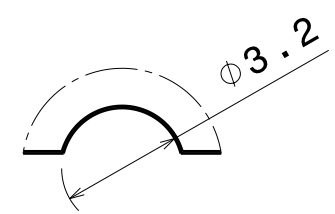
Detail A  
Scale: 3:1



Detail B  
Scale: 5:1



Detail C  
Scale: 5:1



Detail D  
Scale: 5:1

INDEX	PART NO	DESCRIPTION	MATERIAL	COLOUR
1	C15135	STRADA-2X2-T1	PMMA	

Tolerances if not otherwise shown  
According to DIN ISO 2768-1  
Linear measures:  
Up to 30mm class M, otherwise class C.  
According to DIN ISO 2768-2  
Form and position: class L

**LEDiL** LediL Oy  
Salorankatu 10  
FIN 24240 SALO  
Finland

THIRD ANGLE PROJECTION:

DRAWING TITLE  
**C15135\_STRADA-2X2-T1**

This drawing is the property of LEDiL Oy. It may not be reproduced, copied or communicated without a written agreement with LEDiL Oy.

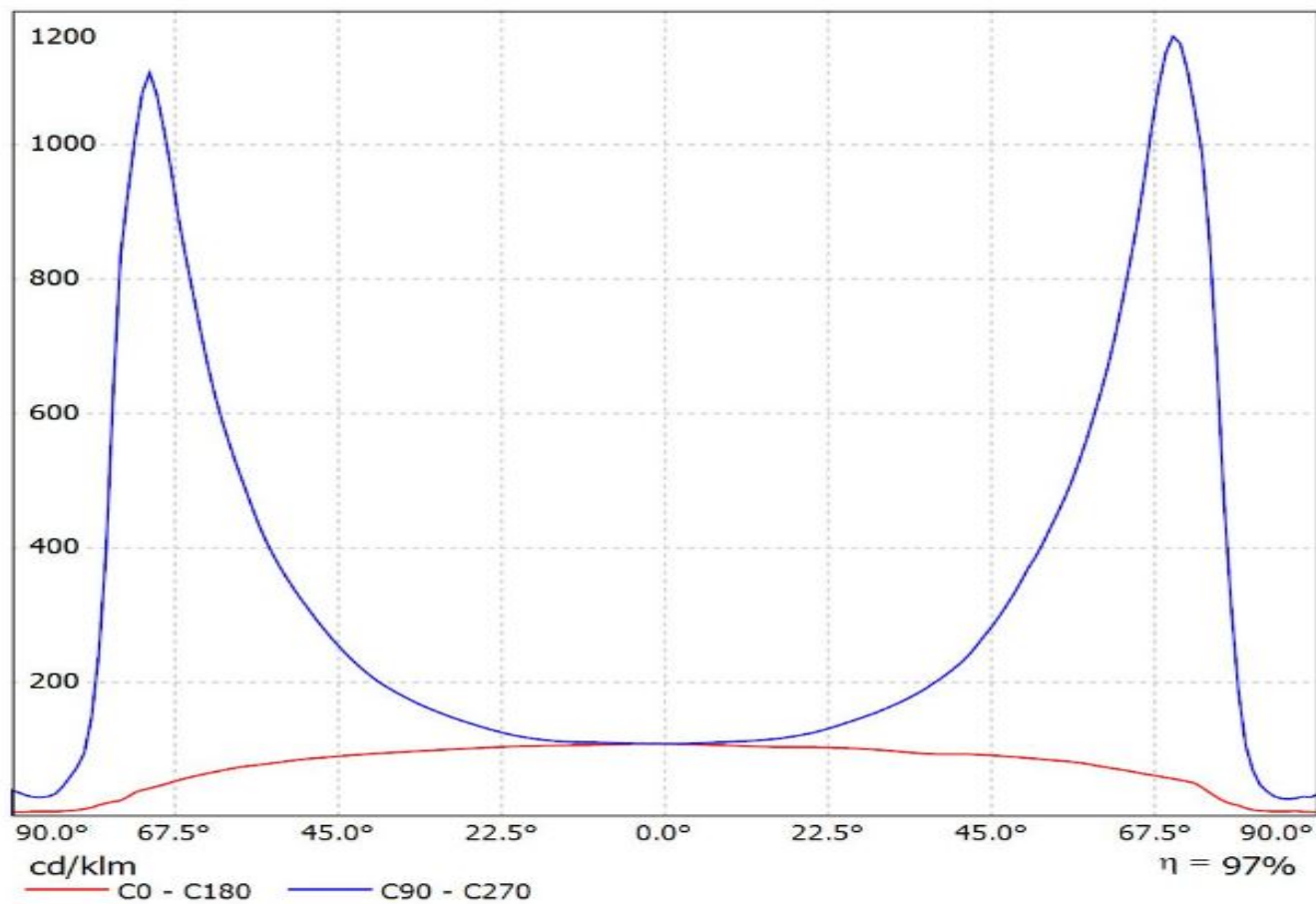
SIZE	PART NUMBER
A3	C15135

SCALE	3:2	WEIGHT	8,48 g	SHEET	1/1
-------	-----	--------	--------	-------	-----

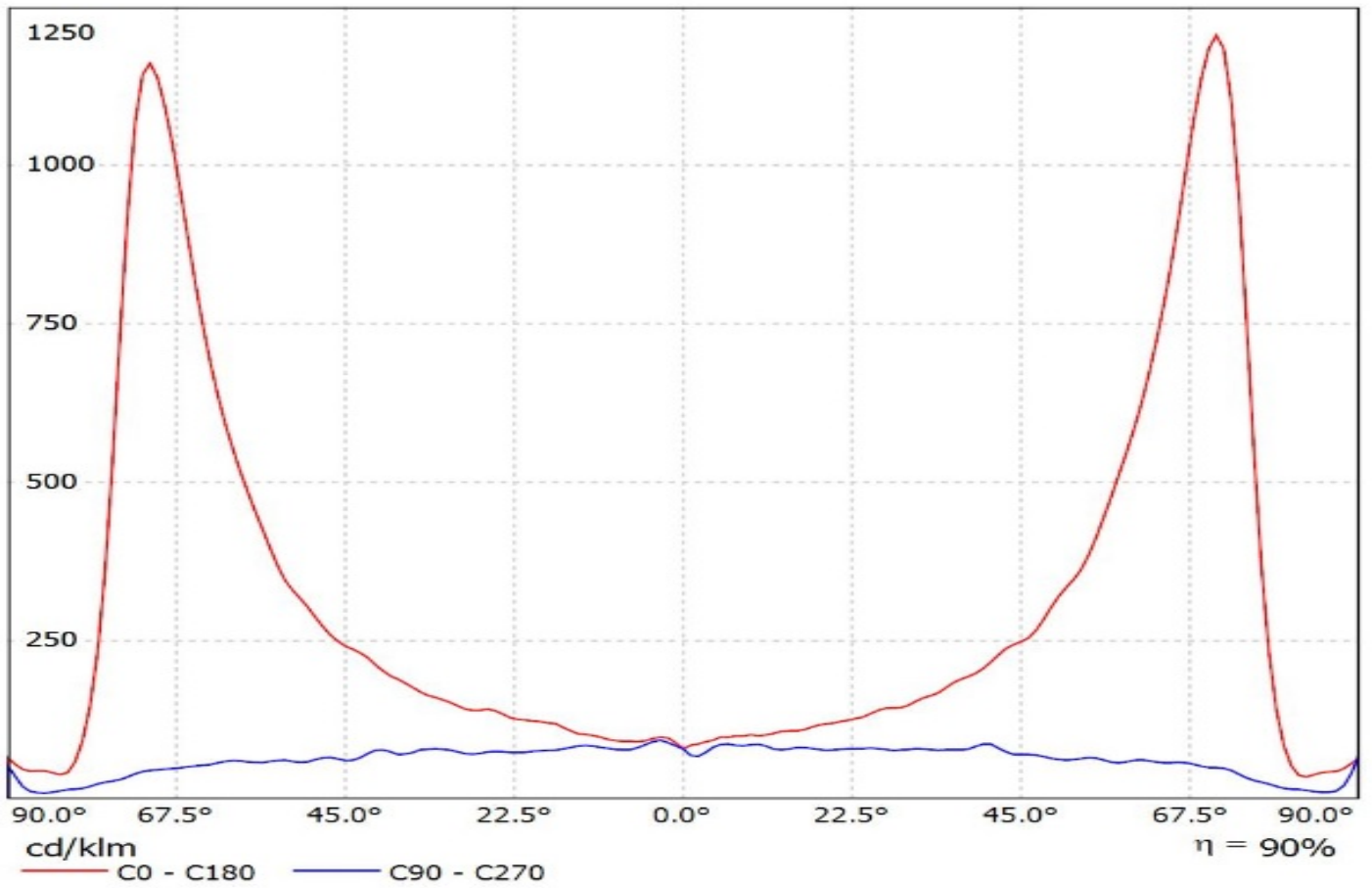
H G B A

Luminaire: Ledil C15135\_STRADA-2X2-T1\_(XP-L)\_C1

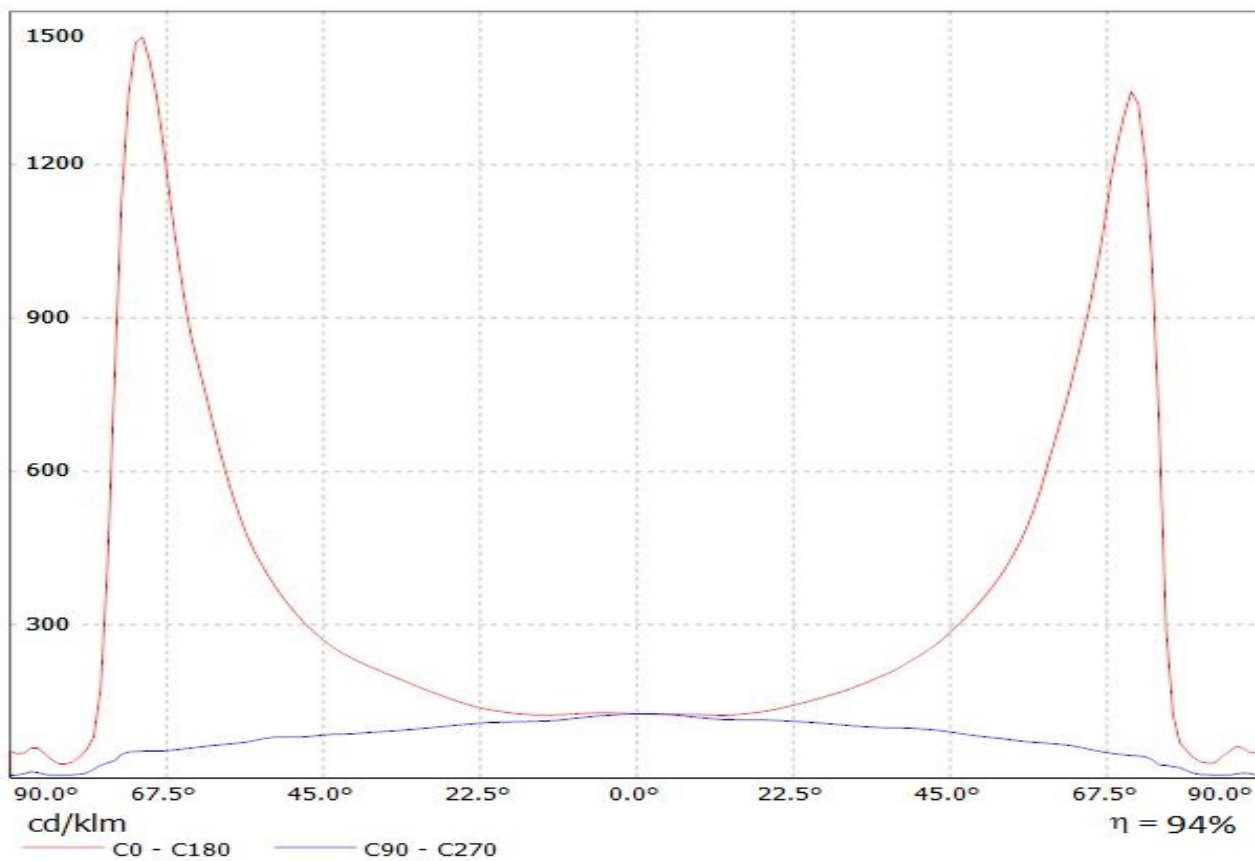
Lamps: 1 x Cree\_XP-L\_(XPLAWT-0-1B0-V40-00-0001)\_509.35lm@250mA\_CCT=7600K\_P=2.8145W\_I=0.25A



Luminaire: Ledil Oy C15135\_STRADA-2X2-T1\_(XT-E)\_SIMULATED C15135\_STRADA-2X2-T1\_(XT-E)\_SIMU  
Lamps: 1 x Cree XT-E - 1.00 W

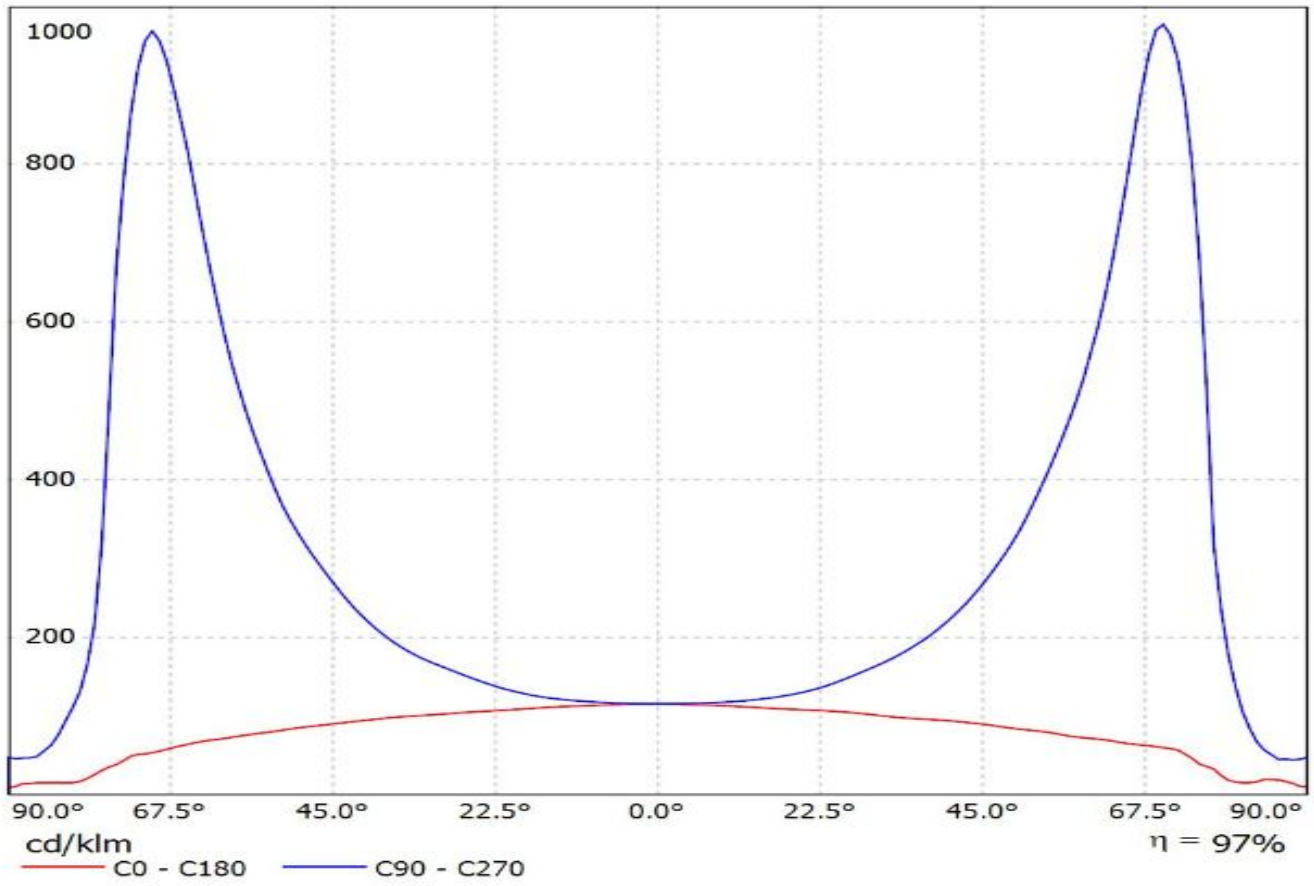


Luminaire: LEDiL Oy C15135\_STRADA-2X2-T1\_(XP-G2)  
Lamps: 1 x Cree\_XP-G2\_(XPGBWT-L1-000-00-G51)\_409.845lm@250mA\_P=2.94464\_I=0.250A

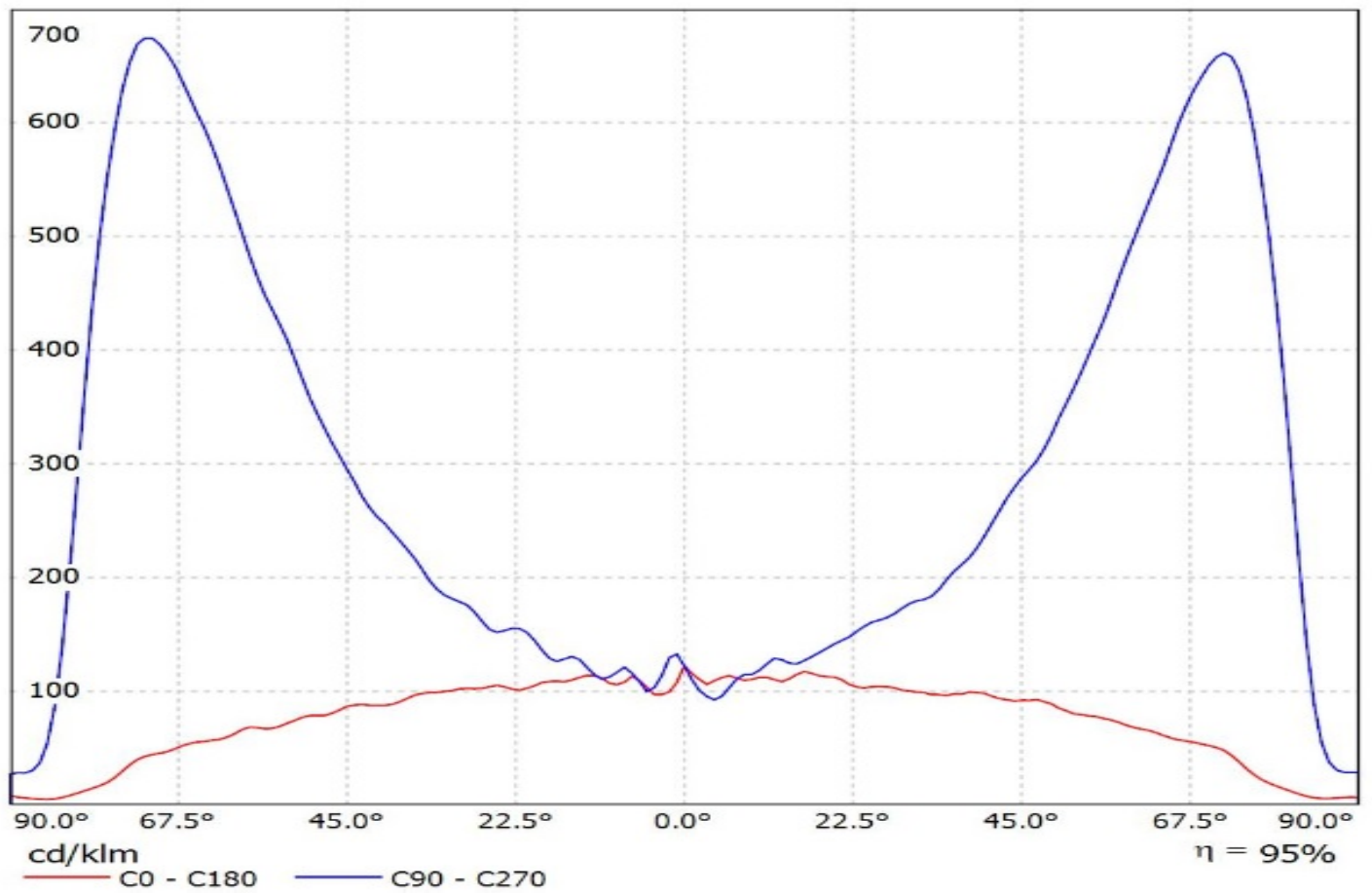


Luminaire: Ledil C15135\_STRADA-2X2-T1\_(XP-L2)

Lamps: 1 x Cree\_XP-L2\_2x2\_(XPLBWT-00-0000-000BV50E3)550.93lm@250mA\_P=2.7815W\_I=0.25A

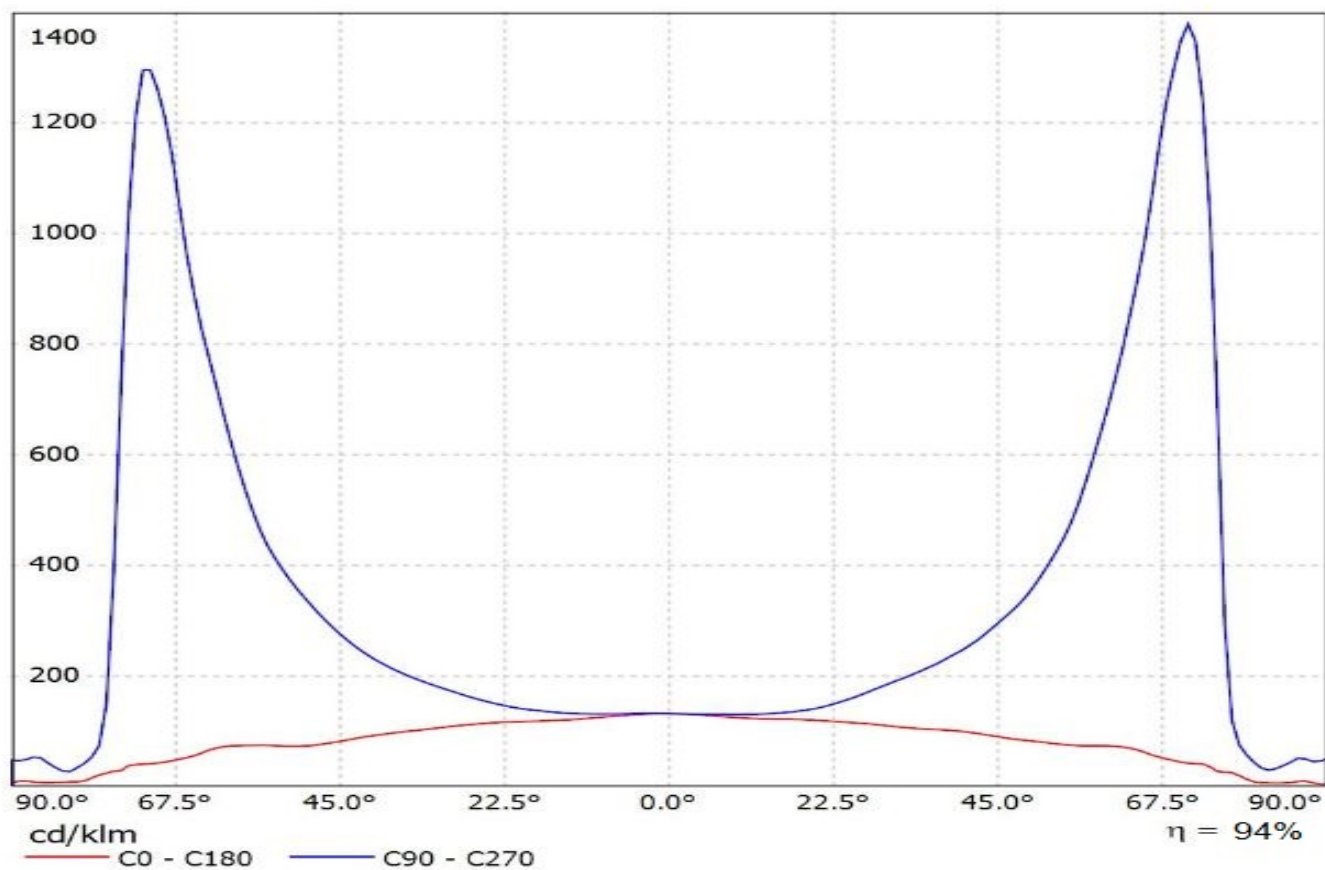


Luminaire: Ledil Oy C15135\_STRADA-2X2-T1\_(MHB-A)\_SIMULATED  
Lamps: 1 x Cree MHB-A





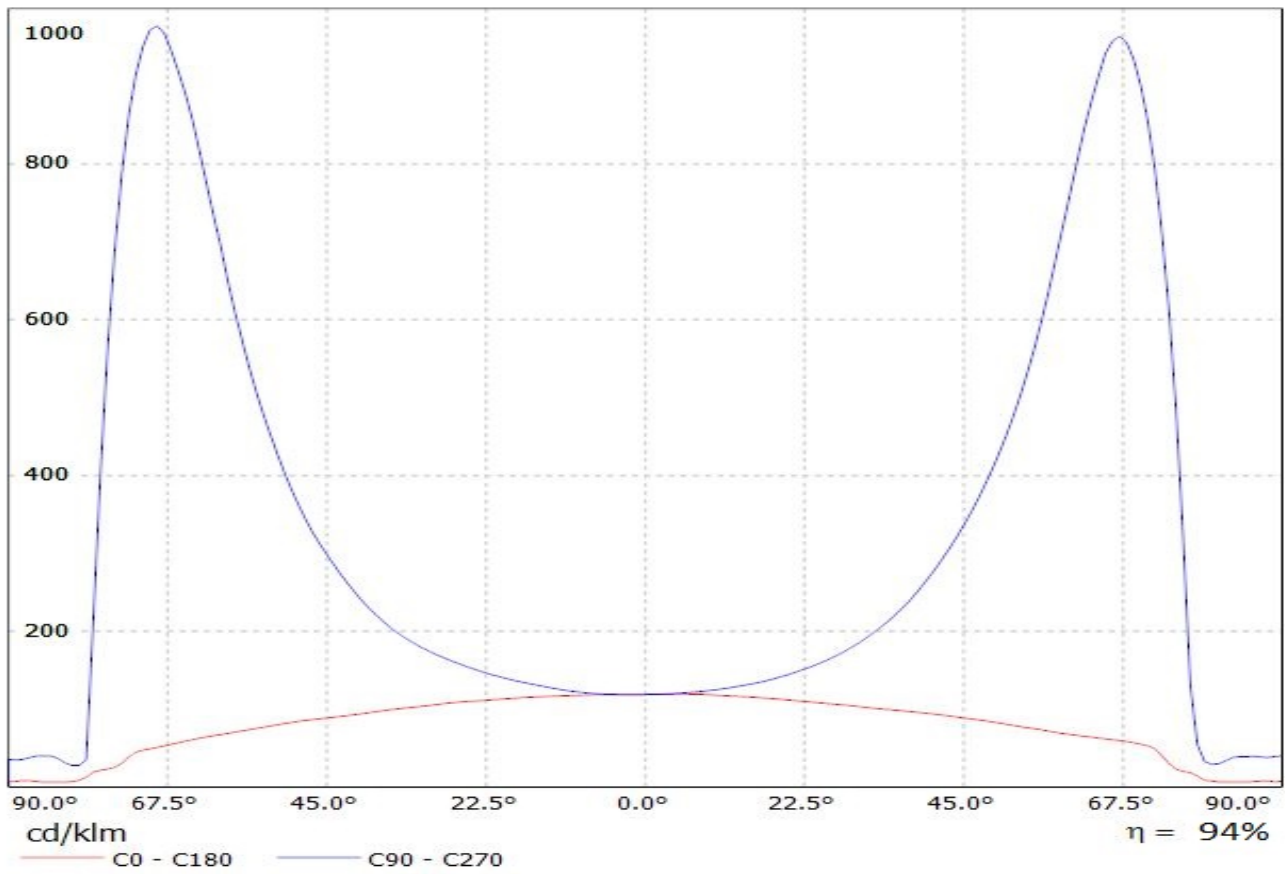
Luminaire: Ledil C15135\_STRADA-2X2-T1\_(H35C1)  
Lamps: 1 x LG\_H35C1\_2x2\_477.216lm@250mA\_P=2.87475W\_I=0.250A



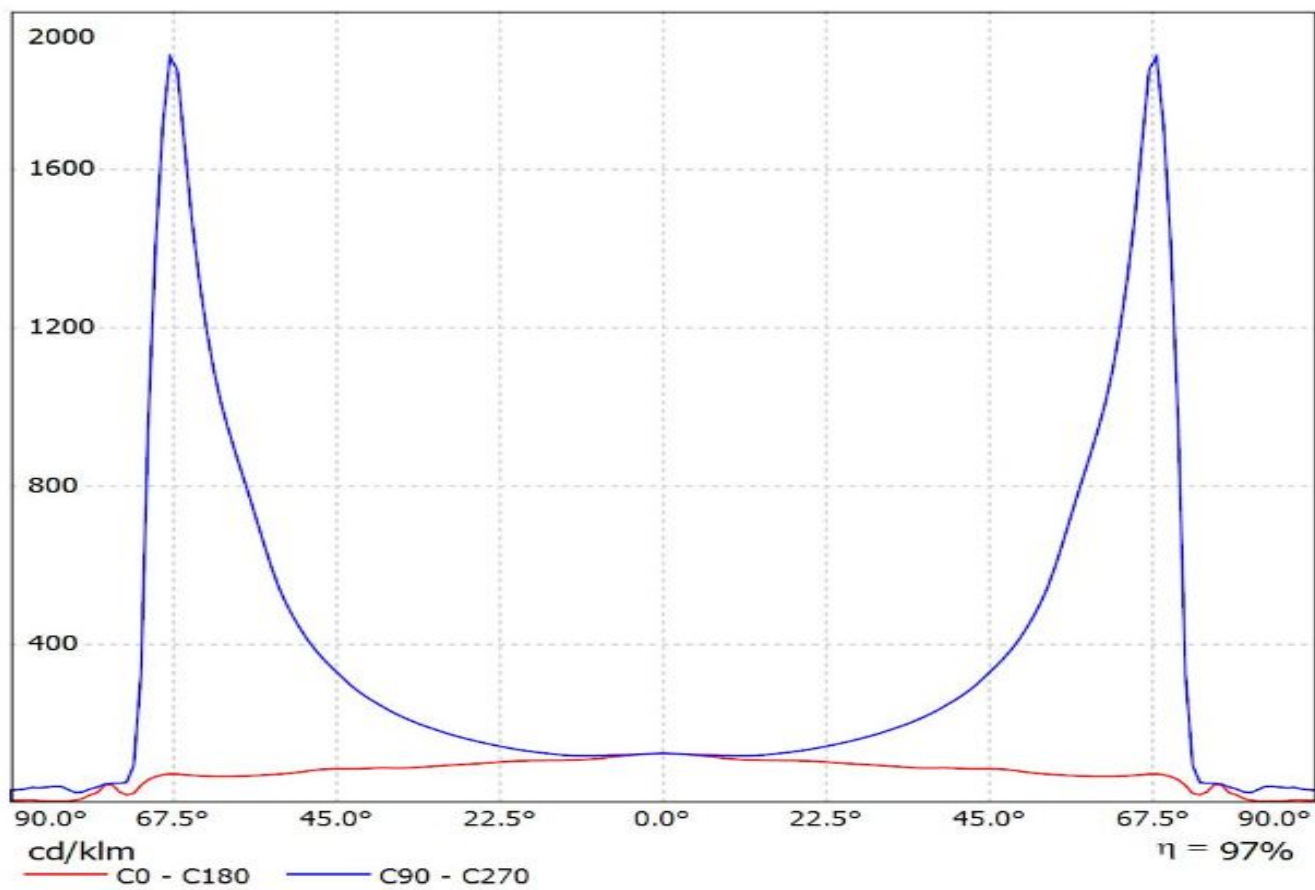


Luminaire: LEDiL Oy C15135\_STRADA-2X2-T1\_(Luxeon\_5050)

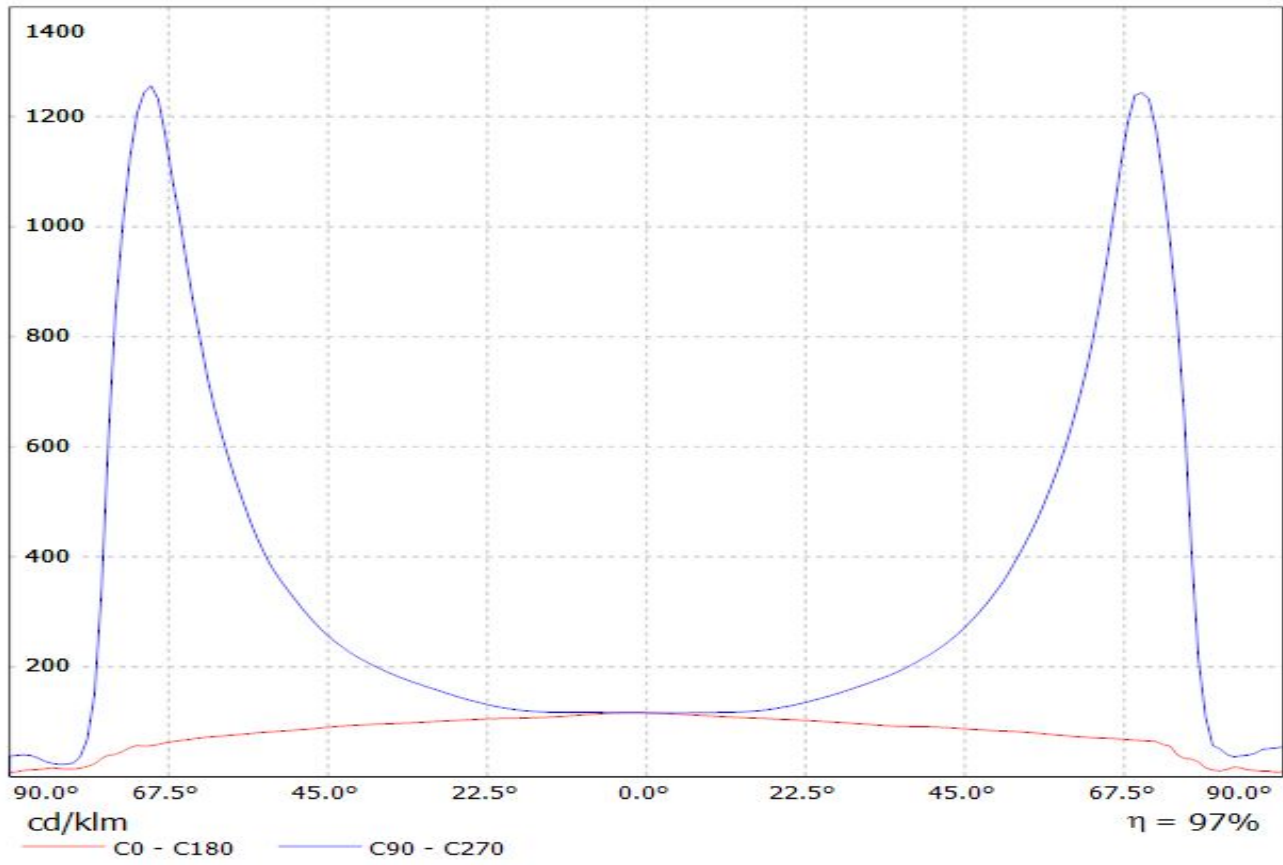
Lamps: 1 x Luxeon\_5050\_2x2\_1270.76lm@80mA\_CCT=5700K\_P=7.35815W\_I=0.080A\_70CRI



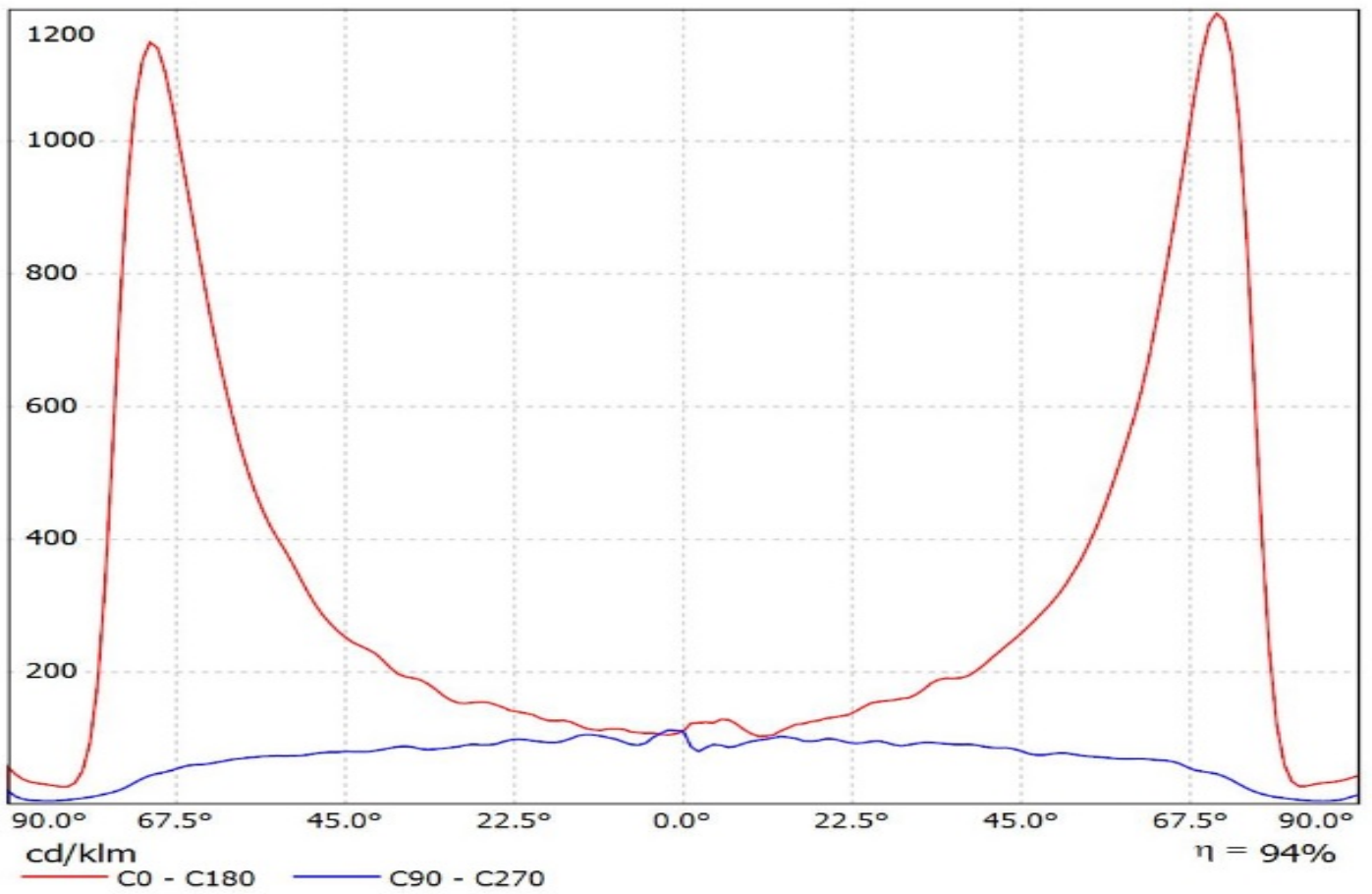
Luminaire: LEDiL Oy C15135\_STRADA-2X2-T1\_(Nichia\_E21A)  
Lamps: 1 x Nichia\_E21A\_452.514lm@250mA\_P=2.806W\_I=0.250A



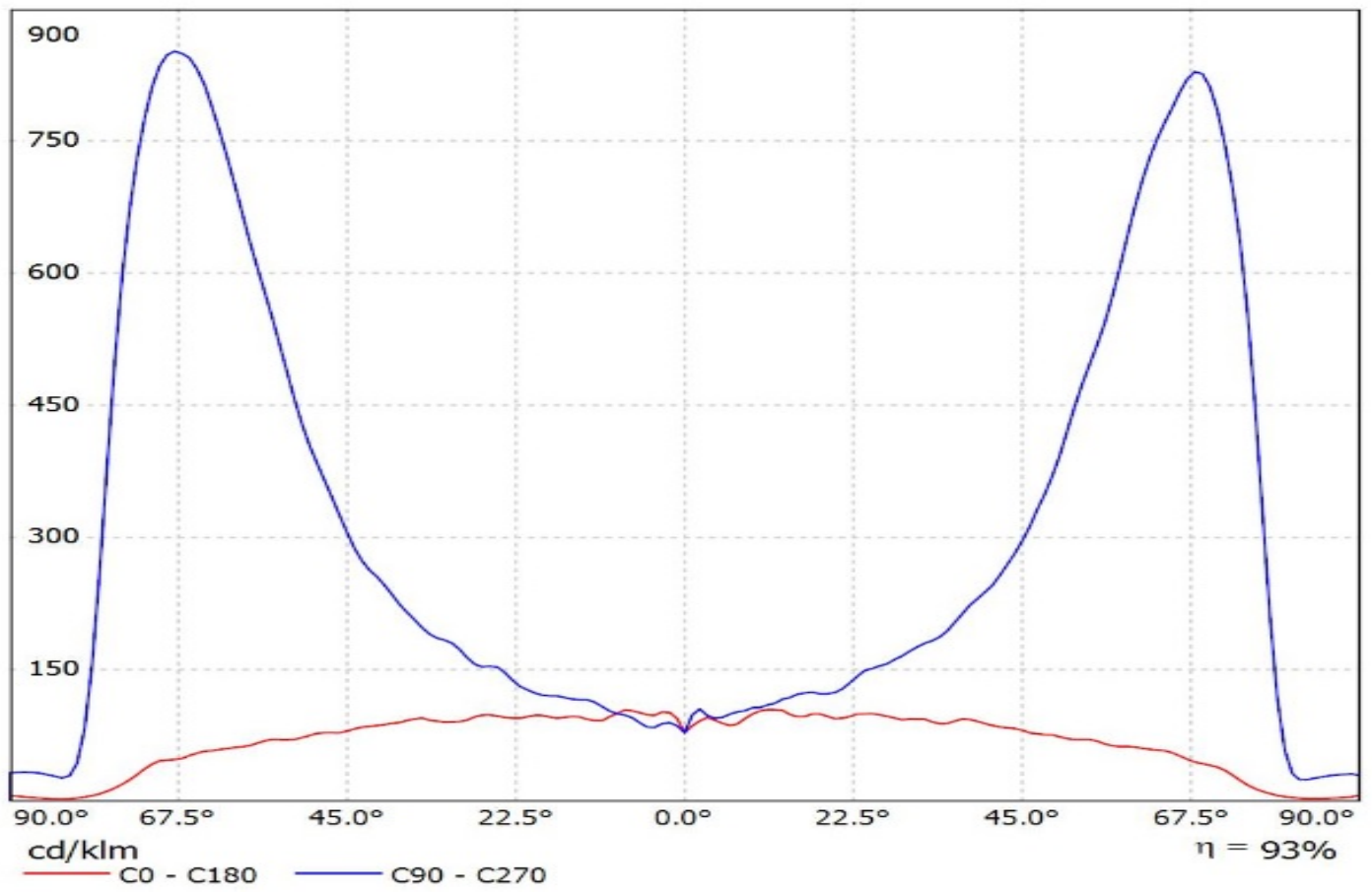
Luminaire: LEDiL Oy C15135\_STRADA-2X2-T1\_(NVSW319AE)  
Lamps: 1 x Nichia\_NVSW319AE\_499.093lm@250mA\_P=2.79052W\_I=0.25A



Luminaire: Ledil Oy C15135\_STRADA-2X2-T1\_(NVSxx19C)\_SIMULATED  
Lamps: 1 x Nichia NVSW219C

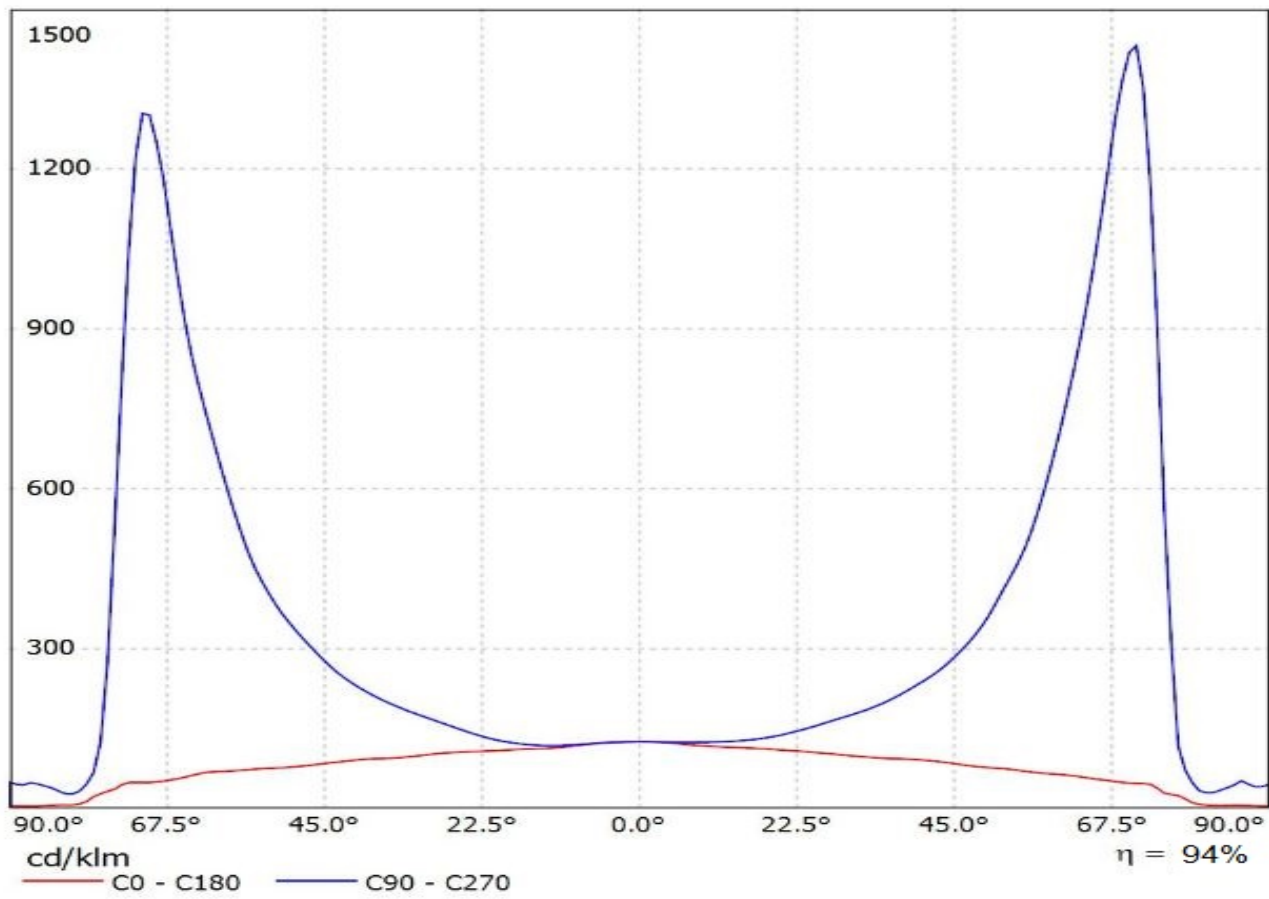


Luminaire: Ledil Oy C15135\_STRADA-2X2-T1\_(Duris\_S8)\_SIMULATED  
Lamps: 1 x Osram Duris S8 (GW P9LT31.EM)

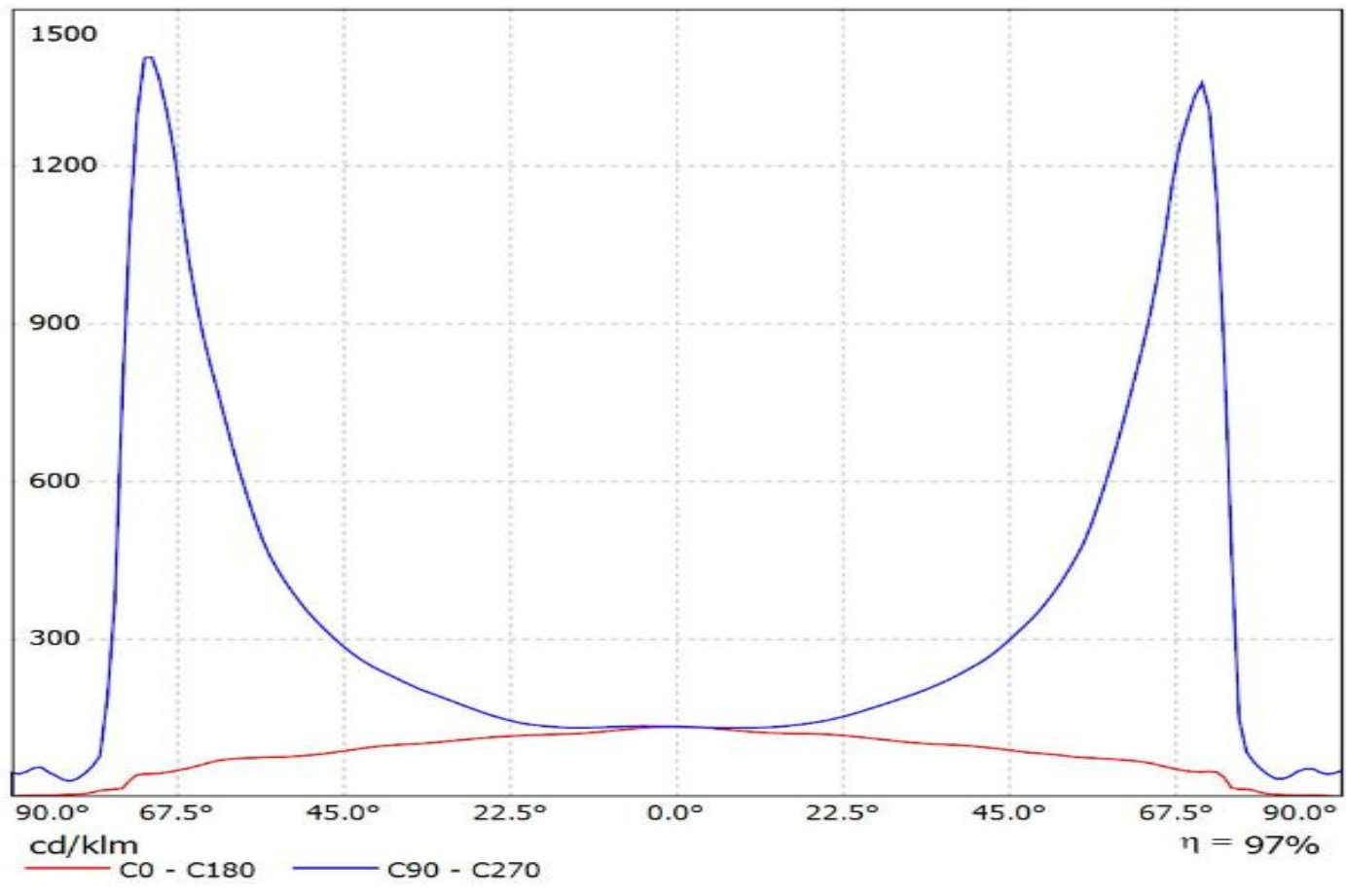


Luminaire: Ledil C15135\_STRADA-2X2-T1\_(Square\_Gen3)

Lamps: 1 x Osram\_Square\_Gen3\_(GW\_CSSRM2.PM)\_461.082lm@250mA\_P=2.79075W\_I=0.250A

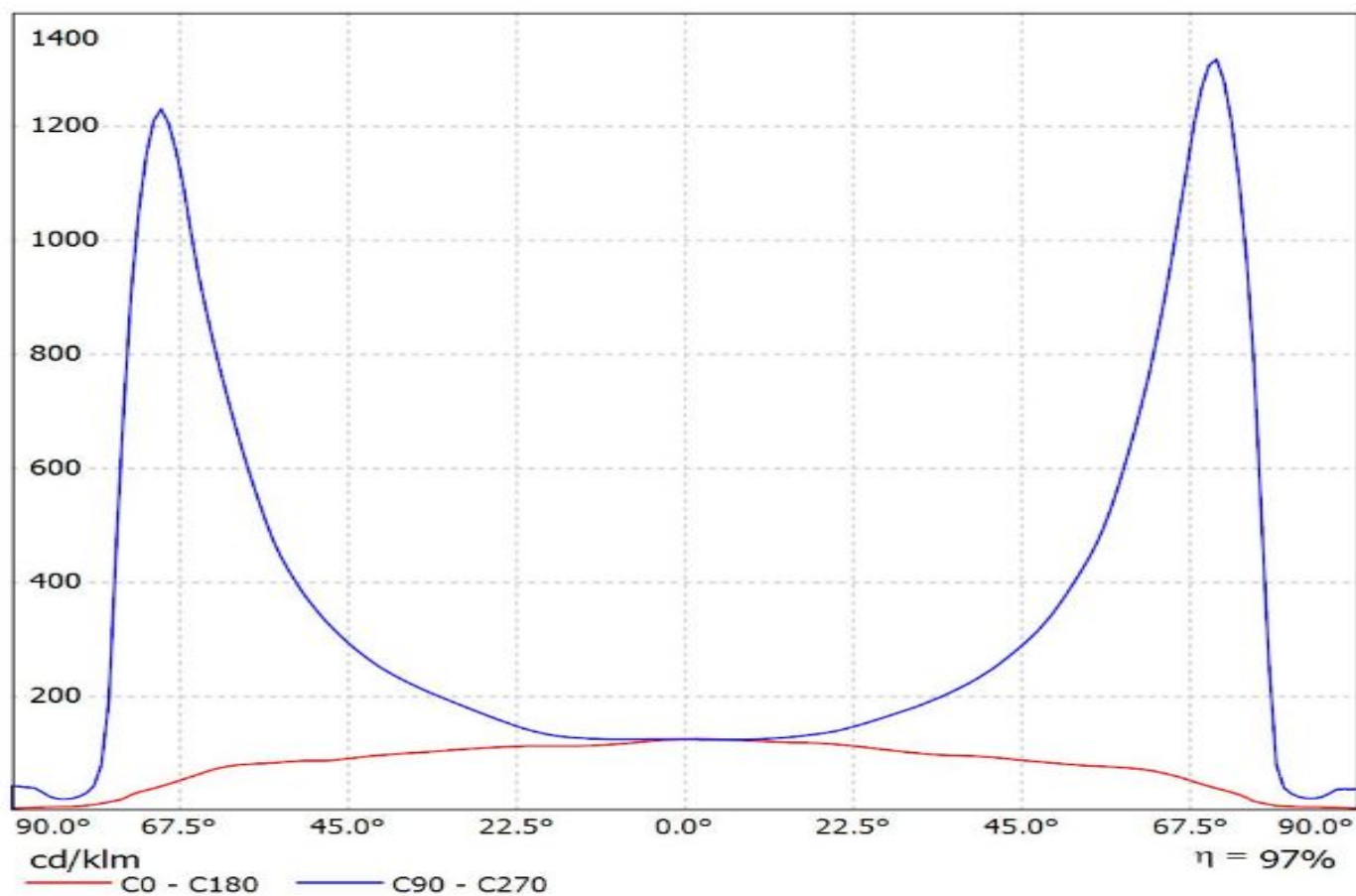


Luminaire: Ledil C15135\_STRADA-2X2-T1 (Fortimo\_FastFlex\_LED\_board\_2x8/740\_DA\_G3)  
Lamps: 1 x Fortimo\_FastFlex\_LED\_board\_2x8/740\_DA\_G3\_1828.23lm@250mA\_P=11.667W\_η=0.25A

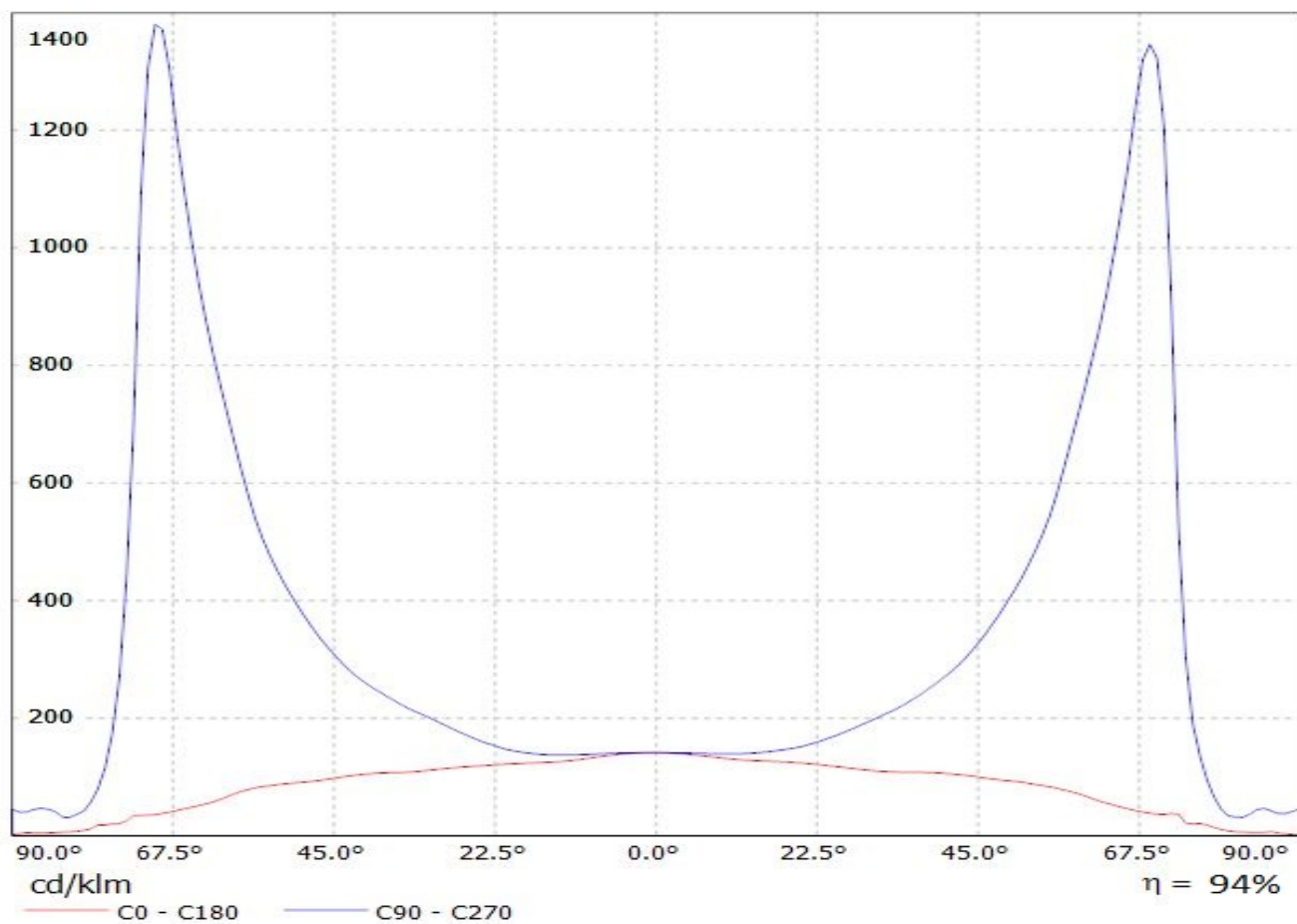




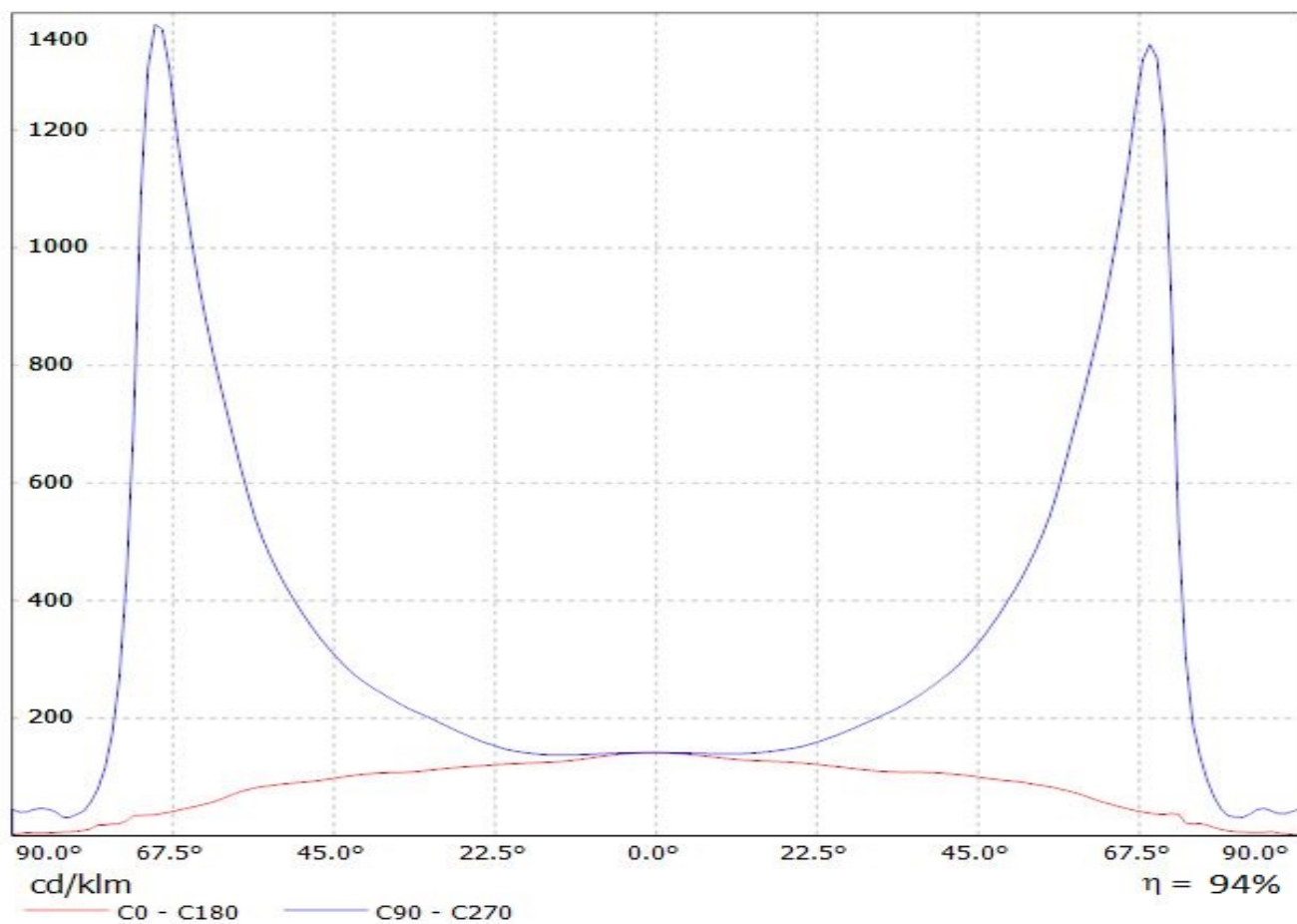
Luminaire: Ledil C15135\_STRADA-2X2-T1\_(LH351B)  
Lamps: 1 x Samsung\_LH351B\_2x2\_444.178lm@250mA\_P=2.8535W\_I=0.25A



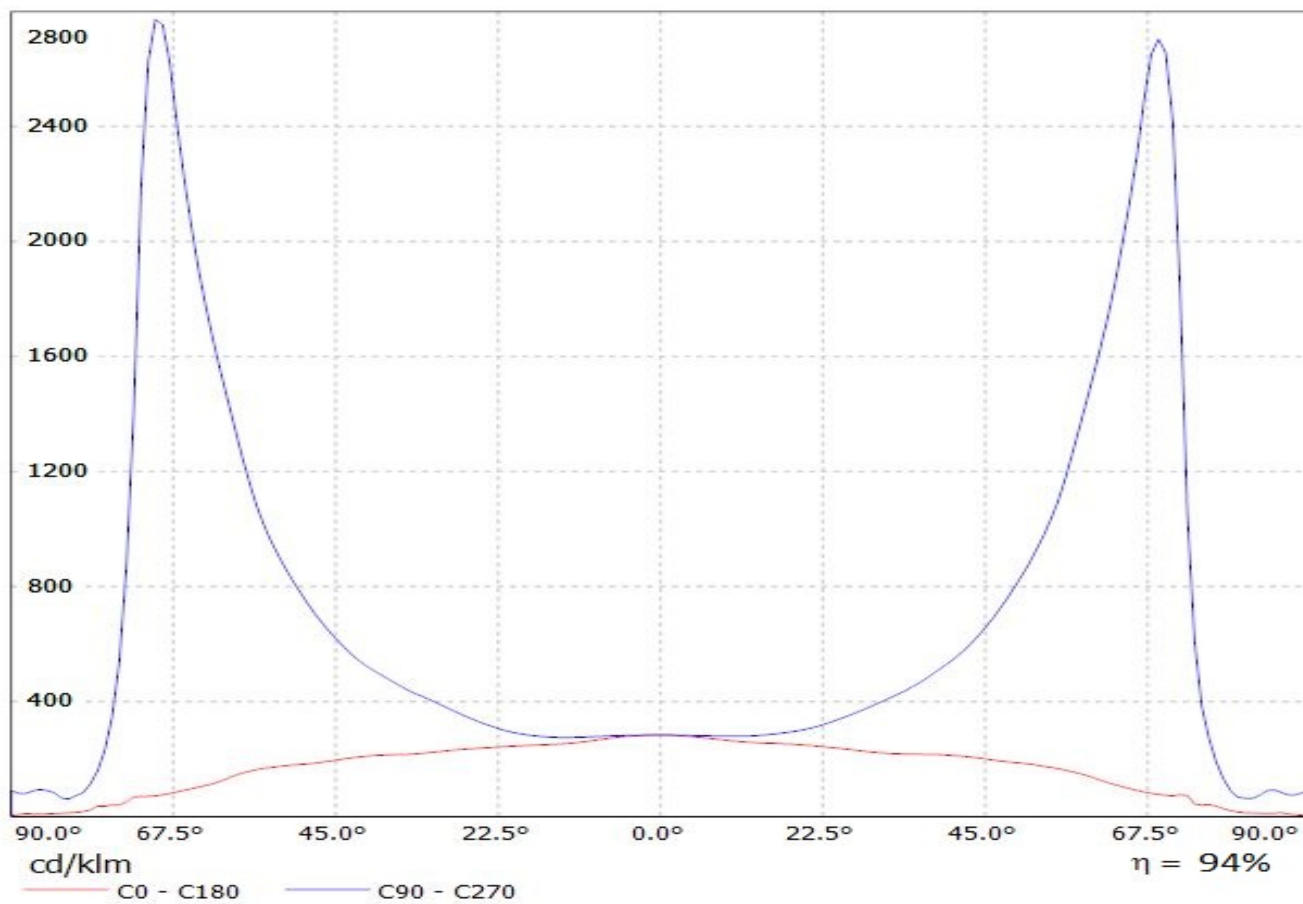
Luminaire: LEDiL Oy C15135\_STRADA-2X2-T1\_(Tridonic\_Module\_RLE\_G1)  
Lamps: 1 x Tridonic\_Module\_RLE\_G1\_4594.42lm@700mA\_P=32.1515W\_I=0.700A



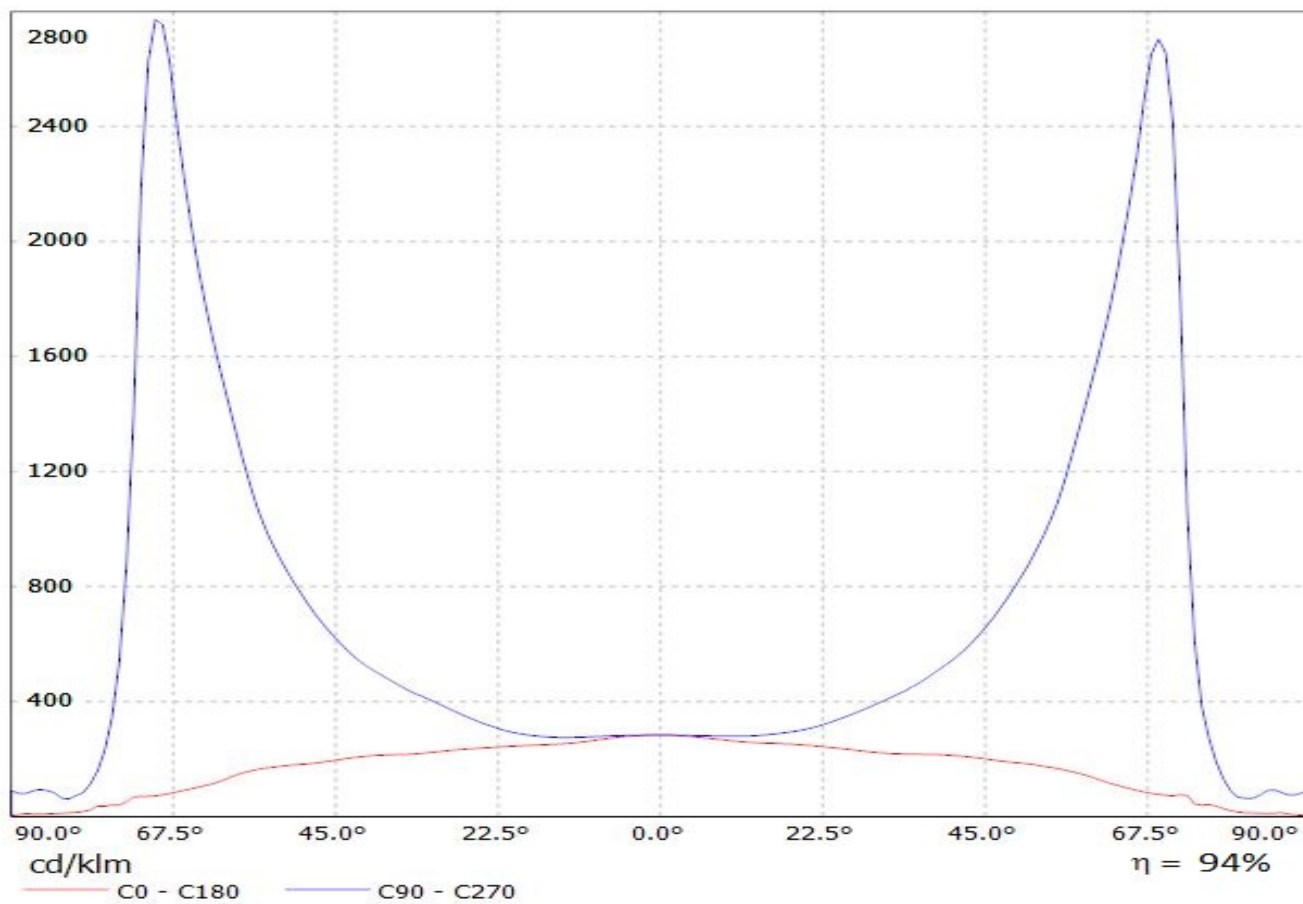
Luminaire: LEDiL Oy C15135\_STRADA-2X2-T1\_(Tridonic\_Module\_RLE\_G1)  
Lamps: 1 x Tridonic\_Module\_RLE\_G1\_4594.42lm@700mA\_P=32.1515W\_I=0.700A



Luminaire: LEDiL Oy C15135\_STRADA-2X2-T1\_(Tridonic\_Module\_RLE\_G1)  
Lamps: 1 x Tridonic\_Module\_RLE\_G1\_2288lm@700mA\_P=16W\_I=0.700A

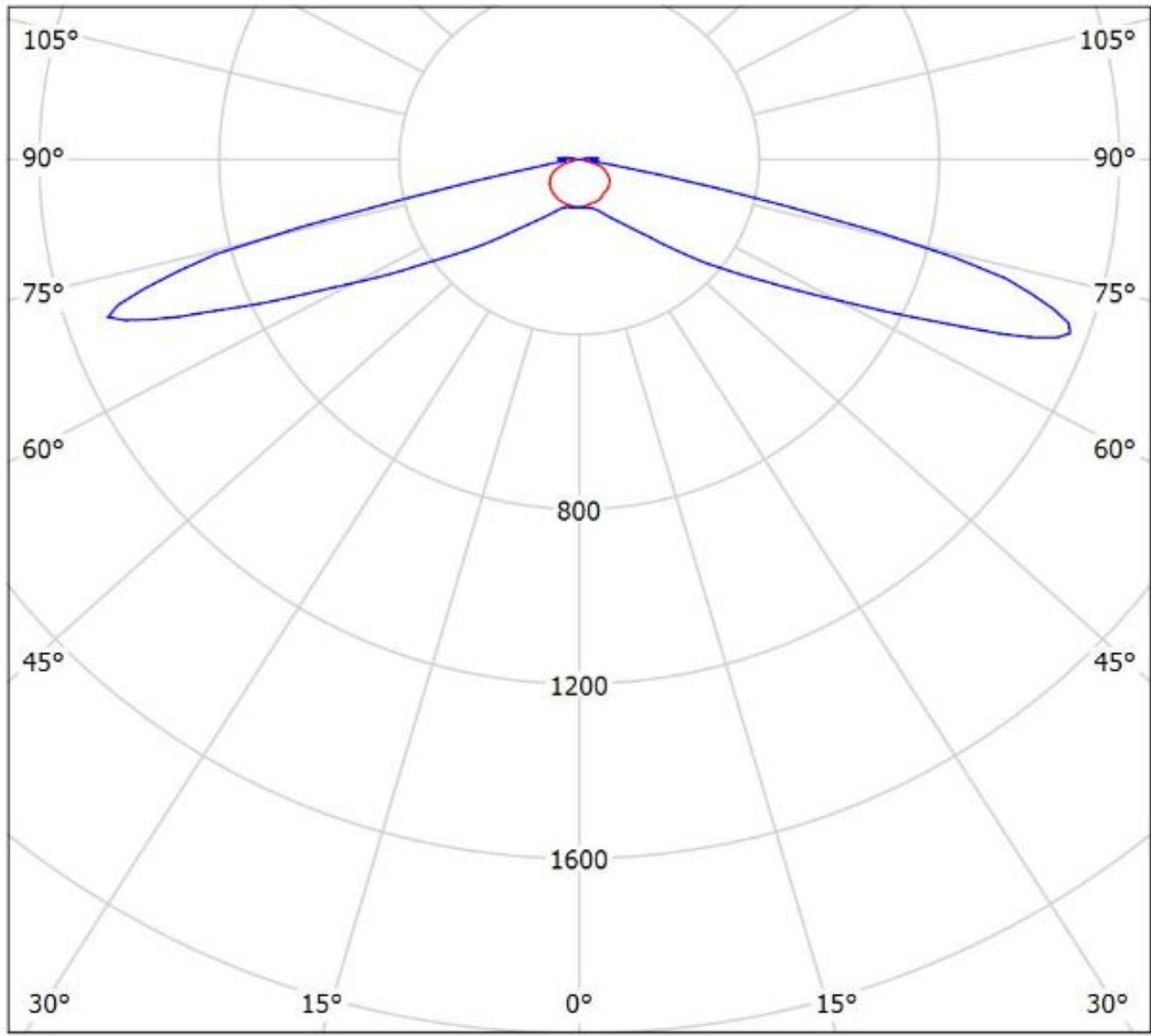


Luminaire: LEDiL Oy C15135\_STRADA-2X2-T1\_(Tridonic\_Module\_RLE\_G1)  
Lamps: 1 x Tridonic\_Module\_RLE\_G1\_2288lm@700mA\_P=16W\_I=0.700A



Luminaire: Ledil C15135\_STRADA-2X2-T1\_(XP-L)\_C1

Lamps: 1 x Cree\_XP-L\_(XPLAWT-0-1B0-V40-00-0001)\_509.35lm@250mA\_CCT=7600K\_P=2.8145W\_I=0.25A

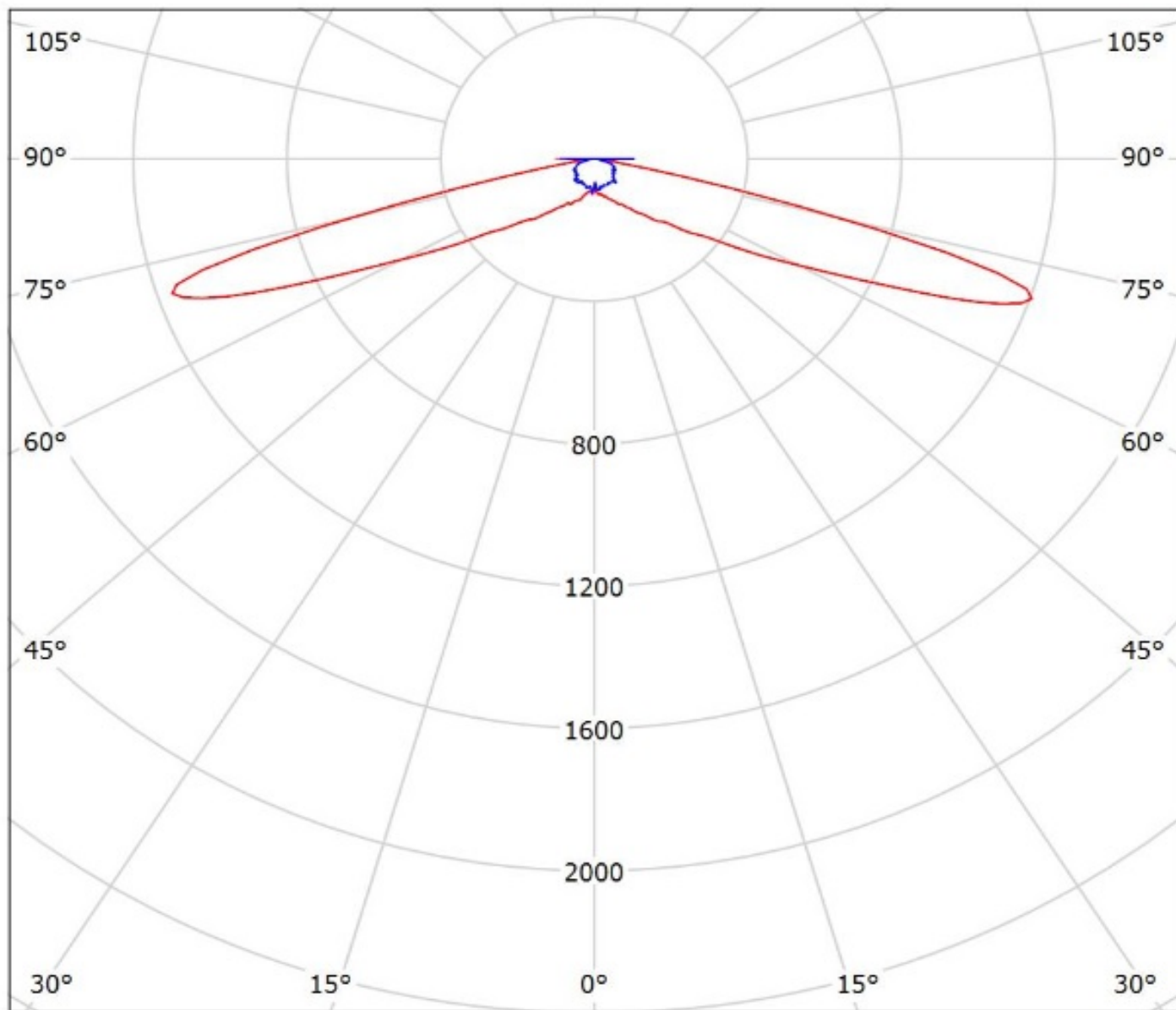


cd/klm

— C0 - C180 — C90 - C270

$\eta = 97\%$

Luminaire: Ledil Oy C15135\_STRADA-2X2-T1\_(XT-E)\_SIMULATED C15135\_STRADA-2X2-T1\_(XT-E)\_SIMU  
Lamps: 1 x Cree XT-E - 1.00 W



cd/klm

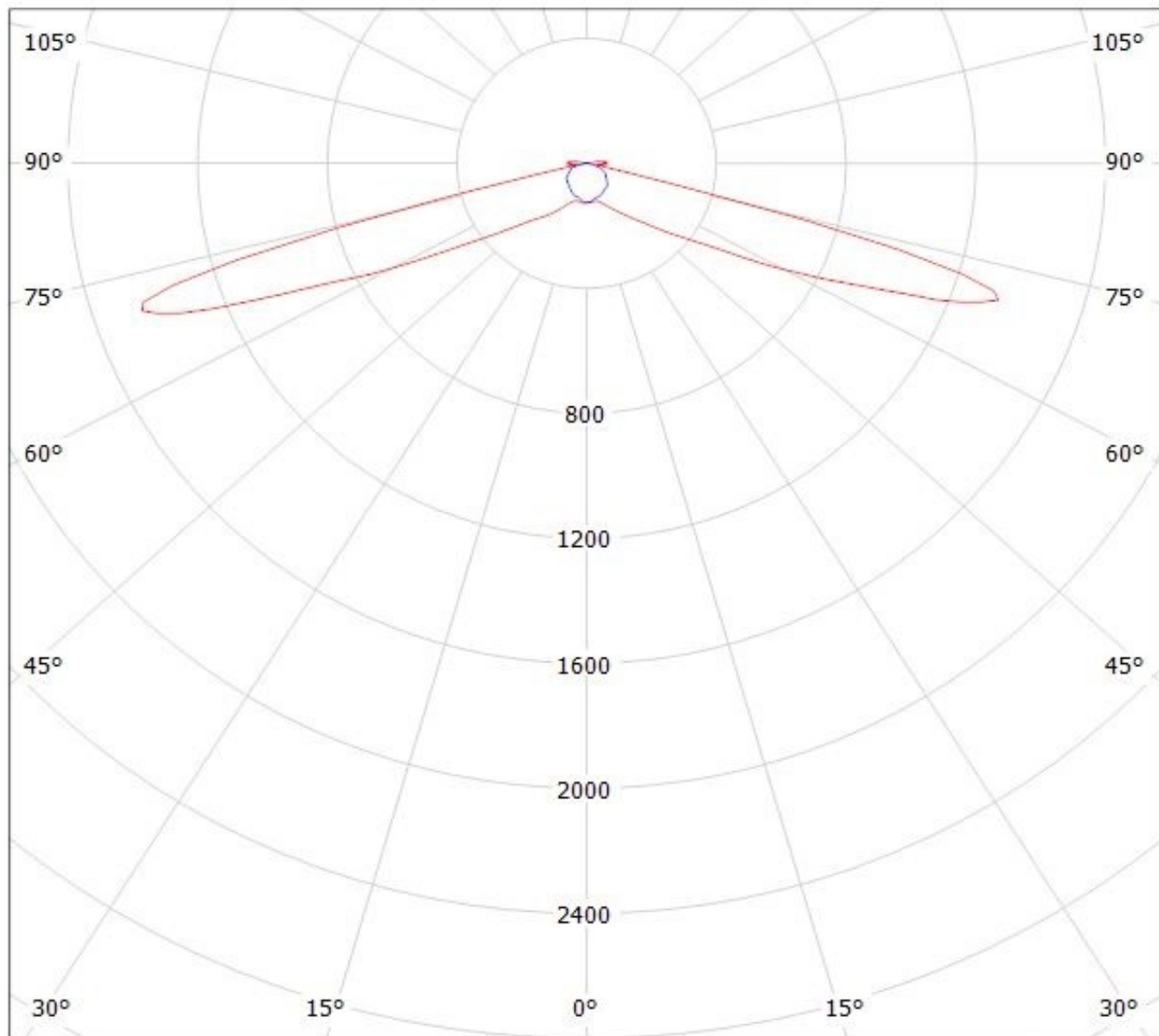
— C0 - C180    — C90 - C270

$\eta = 90\%$



Luminaire: LEDiL Oy C15135\_STRADA-2X2-T1\_(XP-G2)

Lamps: 1 x Cree\_XP-G2\_(XPGBWT-L1-000-00-G51)\_409.845lm@250mA\_P=2.94464\_I=0.250A



cd/klm

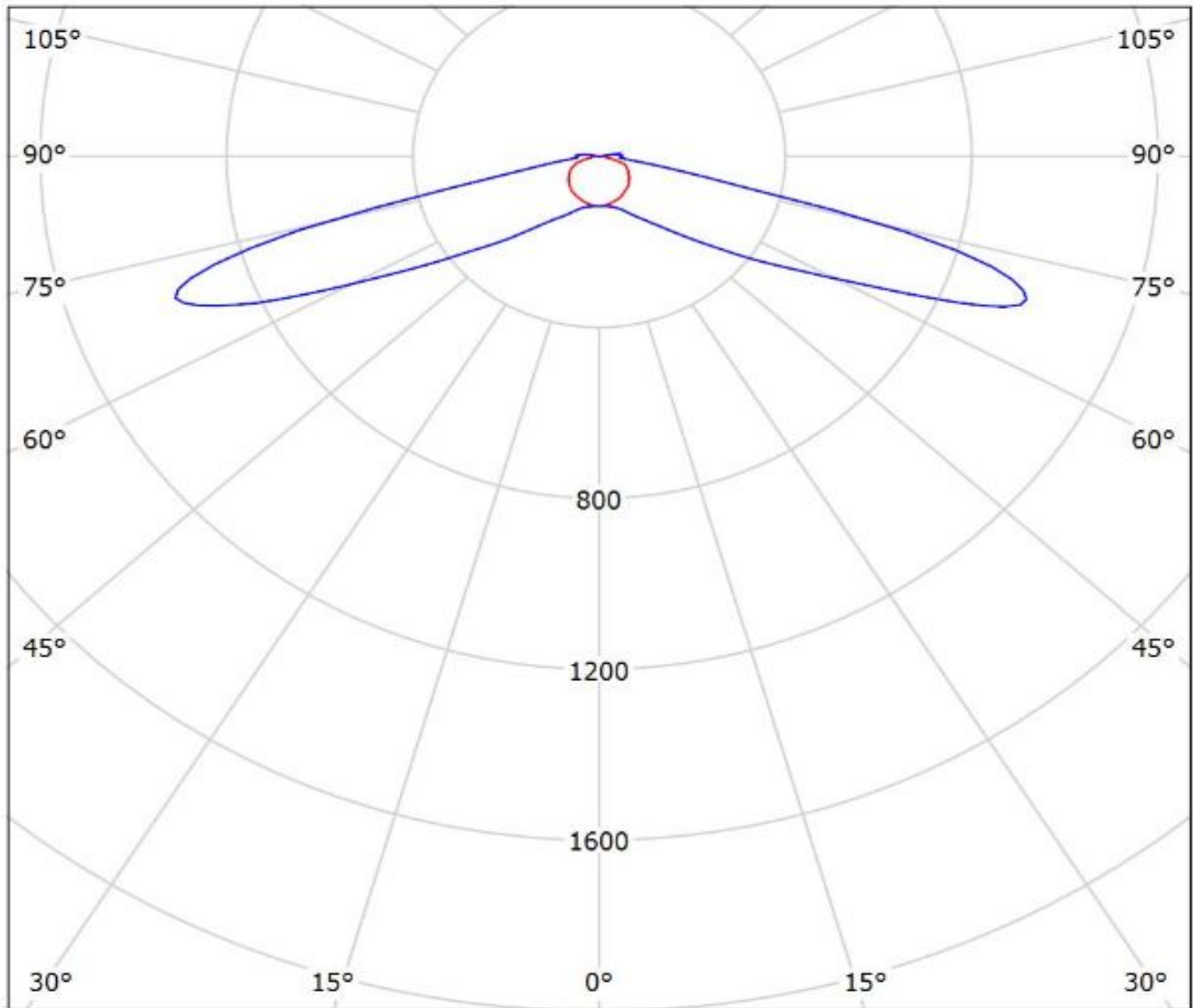
η = 94%

— C0 - C180

— C90 - C270

Luminaire: Ledil C15135\_STRADA-2X2-T1\_(XP-L2)

Lamps: 1 x Cree\_XP-L2\_2x2\_(XPLBWT-00-0000-000BV50E3)550.93lm@250mA\_P=2.7815W\_I=0.25A

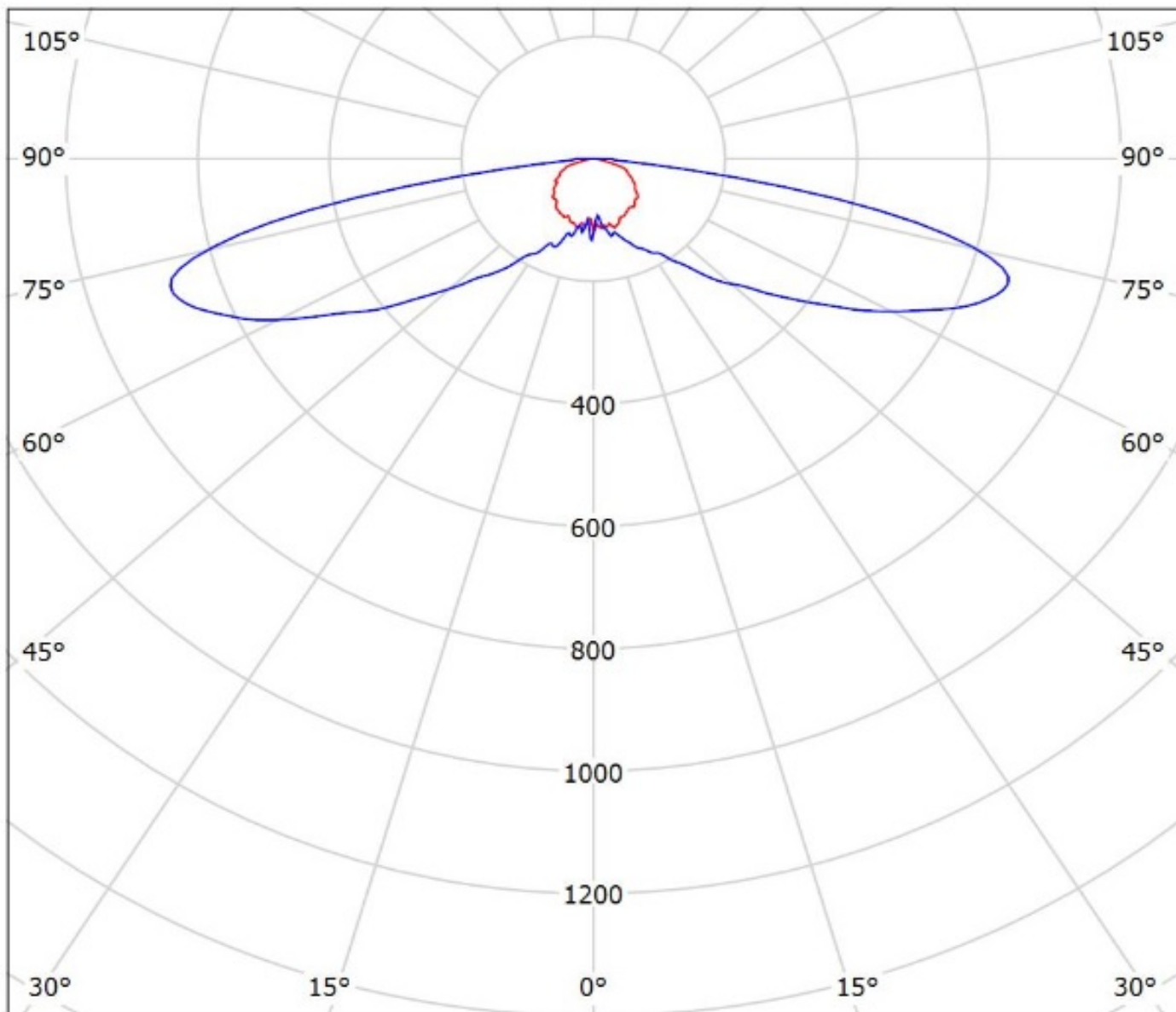


cd/klm

— C0 - C180 — C90 - C270

$\eta = 97\%$

Luminaire: Ledil Oy C15135\_STRADA-2X2-T1\_(MHB-A)\_SIMULATED  
Lamps: 1 x Cree MHB-A



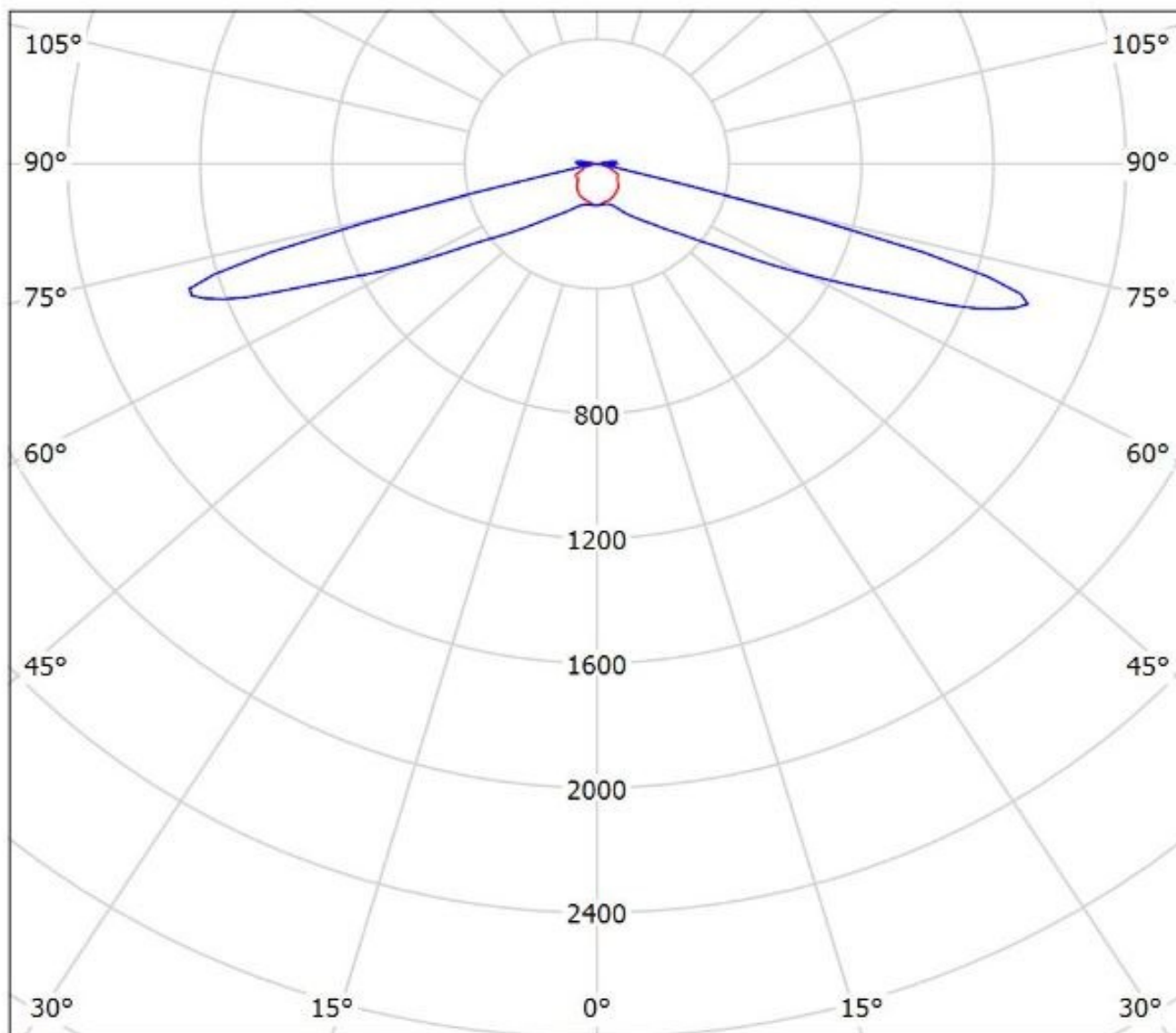
cd/klm

— C0 - C180 — C90 - C270

$\eta = 95\%$

Luminaire: Ledil C15135\_STRADA-2X2-T1\_(H35C1)

Lamps: 1 x LG\_H35C1\_2x2\_477.216lm@250mA\_P=2.87475W\_I=0.250A



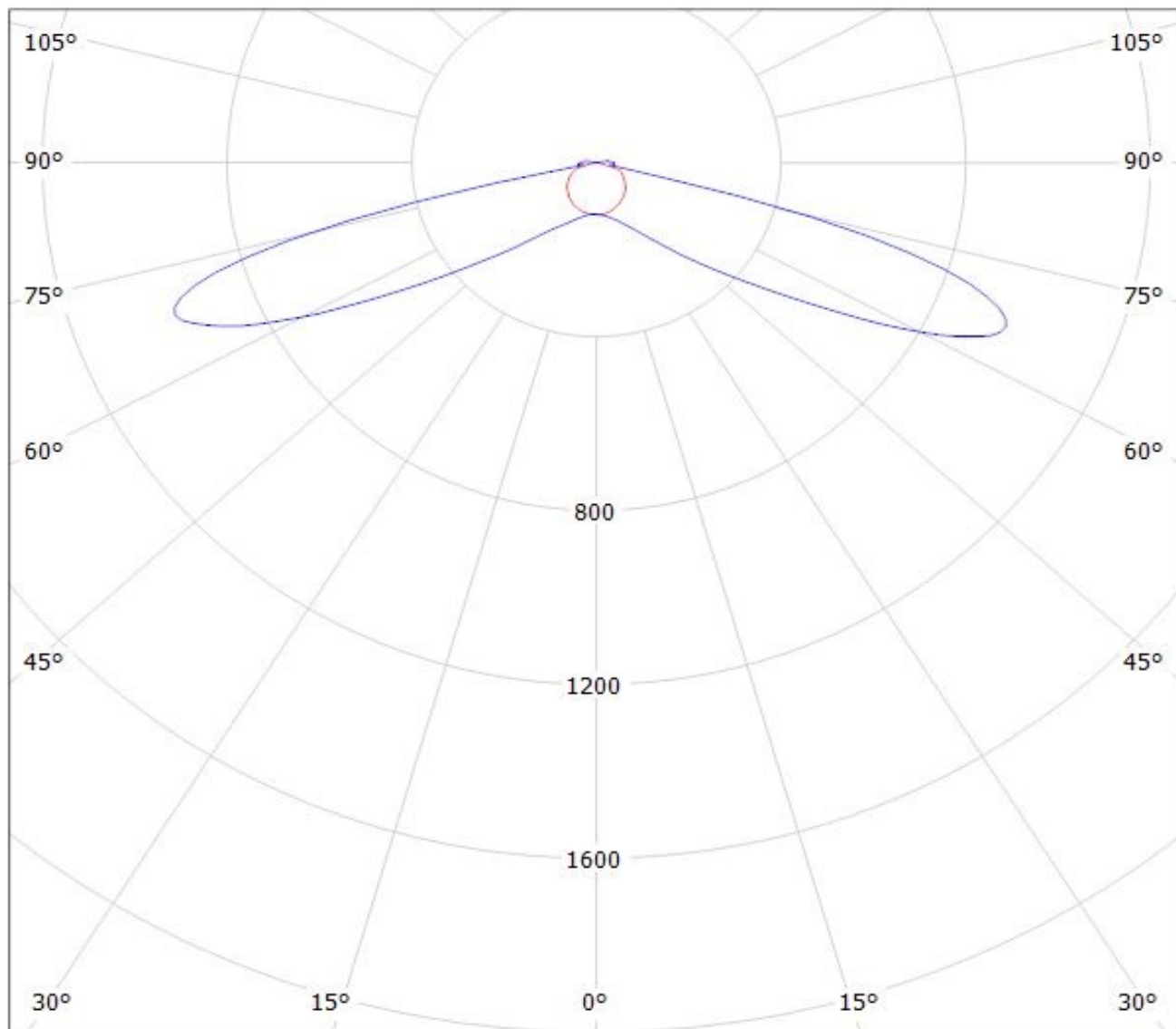
$\eta = 94\%$

cd/klm

— C0 - C180    — C90 - C270

Luminaire: LEDiL Oy C15135\_STRADA-2X2-T1\_(Luxeon\_5050)

Lamps: 1 x Luxeon\_5050\_2x2\_1270.76lm@80mA\_CCT=5700K\_P=7.35815W\_I=0.080A\_70CRI



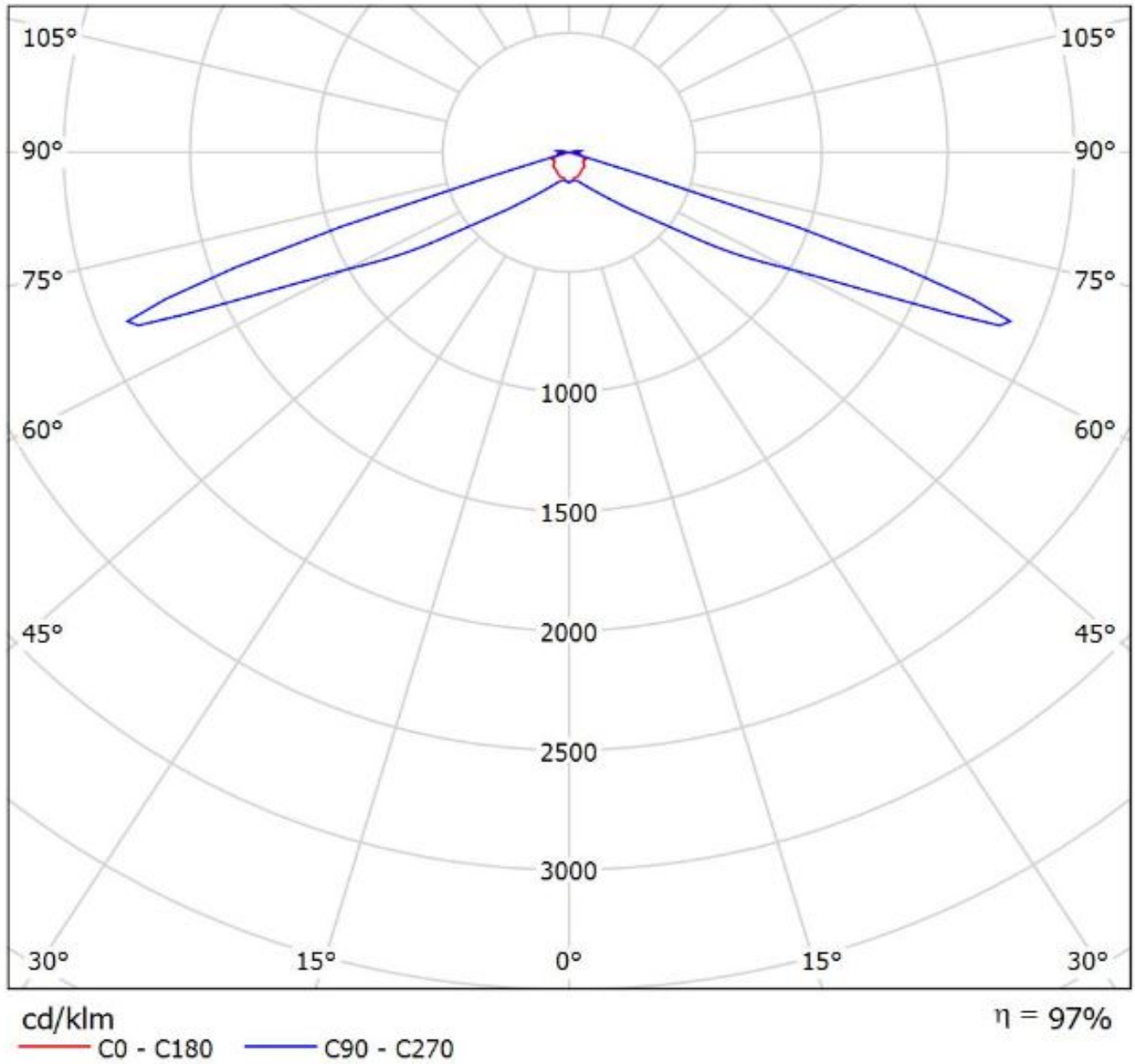
cd/klm

— C0 - C180

— C90 - C270

$\eta = 94\%$

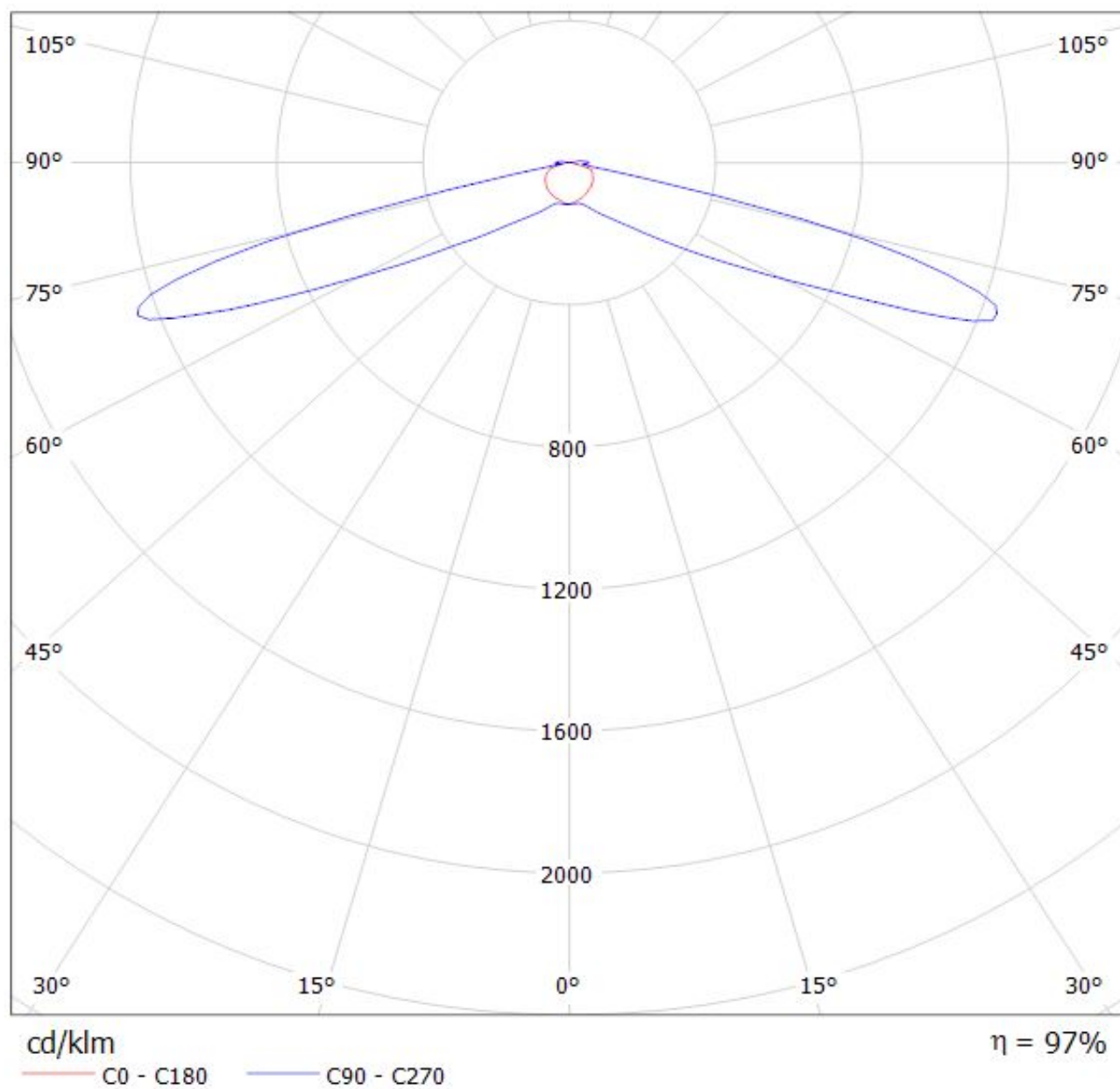
Luminaire: LEDiL Oy C15135\_STRADA-2X2-T1\_(Nichia\_E21A)  
Lamps: 1 x Nichia\_E21A\_452.514lm@250mA\_P=2.806W\_I=0.250A





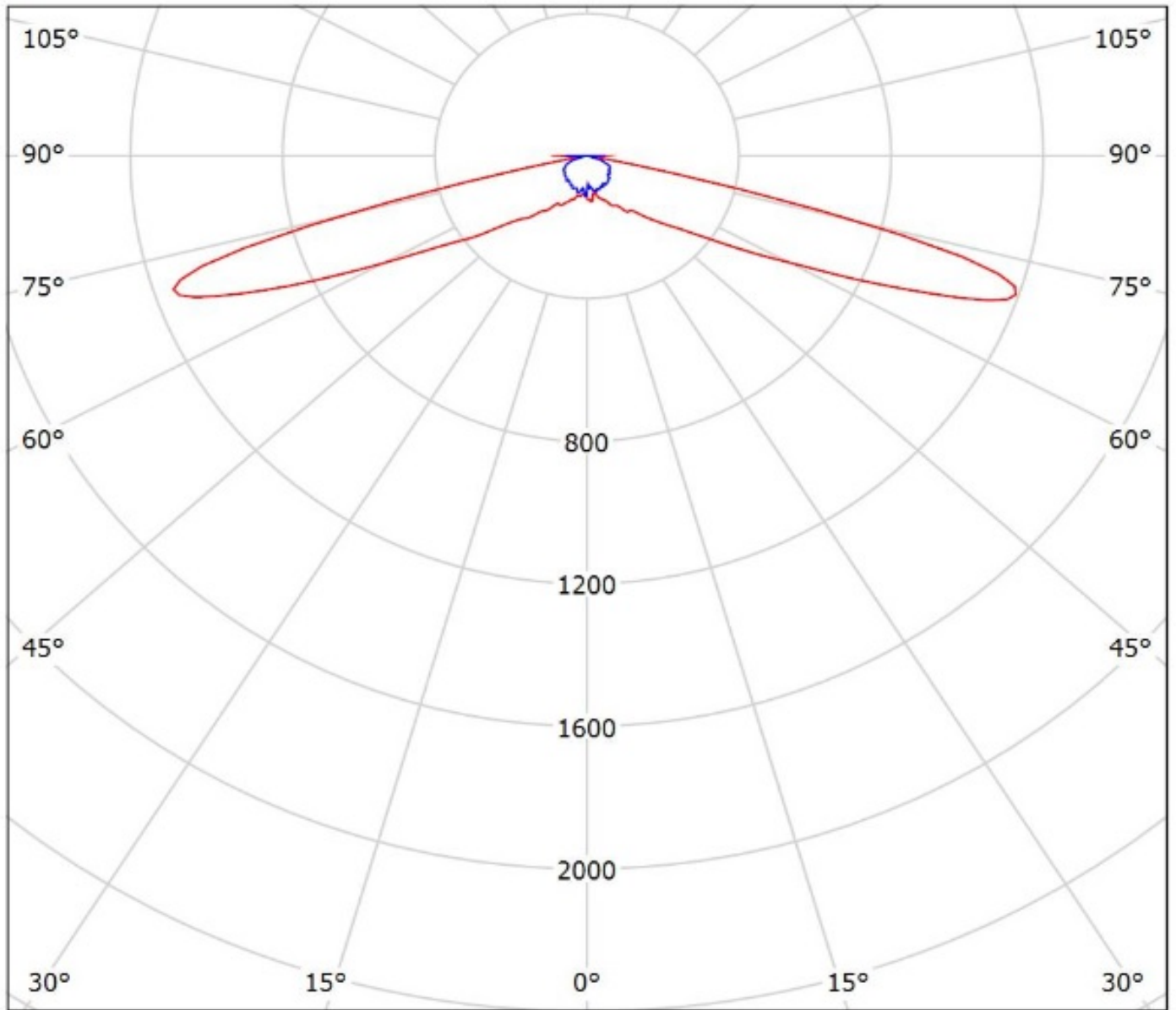
Luminaire: LEDiL Oy C15135\_STRADA-2X2-T1\_(NVSW319AE)

Lamps: 1 x Nichia\_NVSW319AE\_499.093lm@250mA\_P=2.79052W\_I=0.25A





Luminaire: Ledil Oy C15135\_STRADA-2X2-T1\_(NVSxx19C)\_SIMULATED  
Lamps: 1 x Nichia NVSW219C

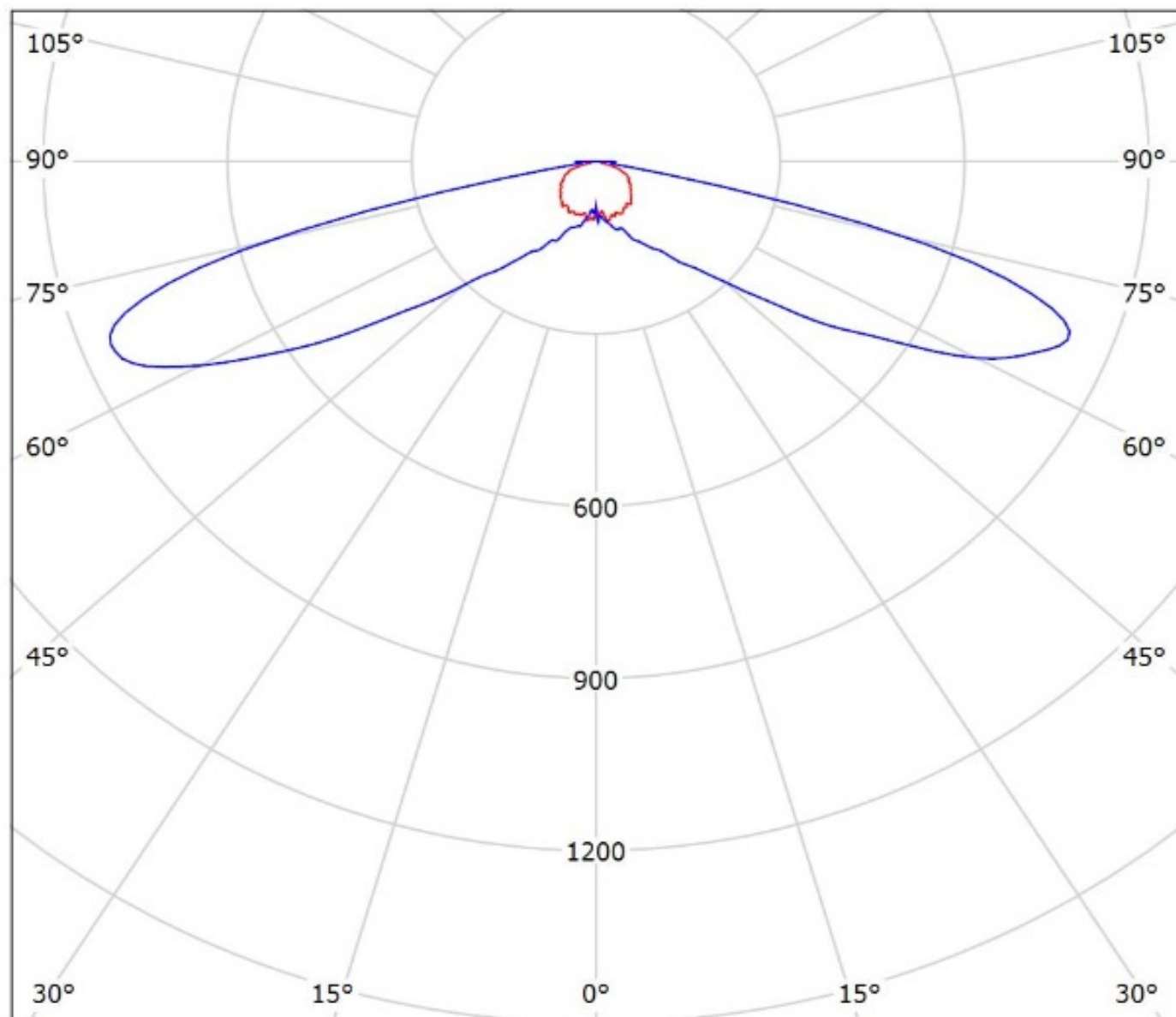


cd/klm

— C0 - C180 — C90 - C270

$\eta = 94\%$

Luminaire: Ledil Oy C15135\_STRADA-2X2-T1\_(Duris\_S8)\_SIMULATED  
Lamps: 1 x Osram Duris S8 (GW P9LT31.EM)



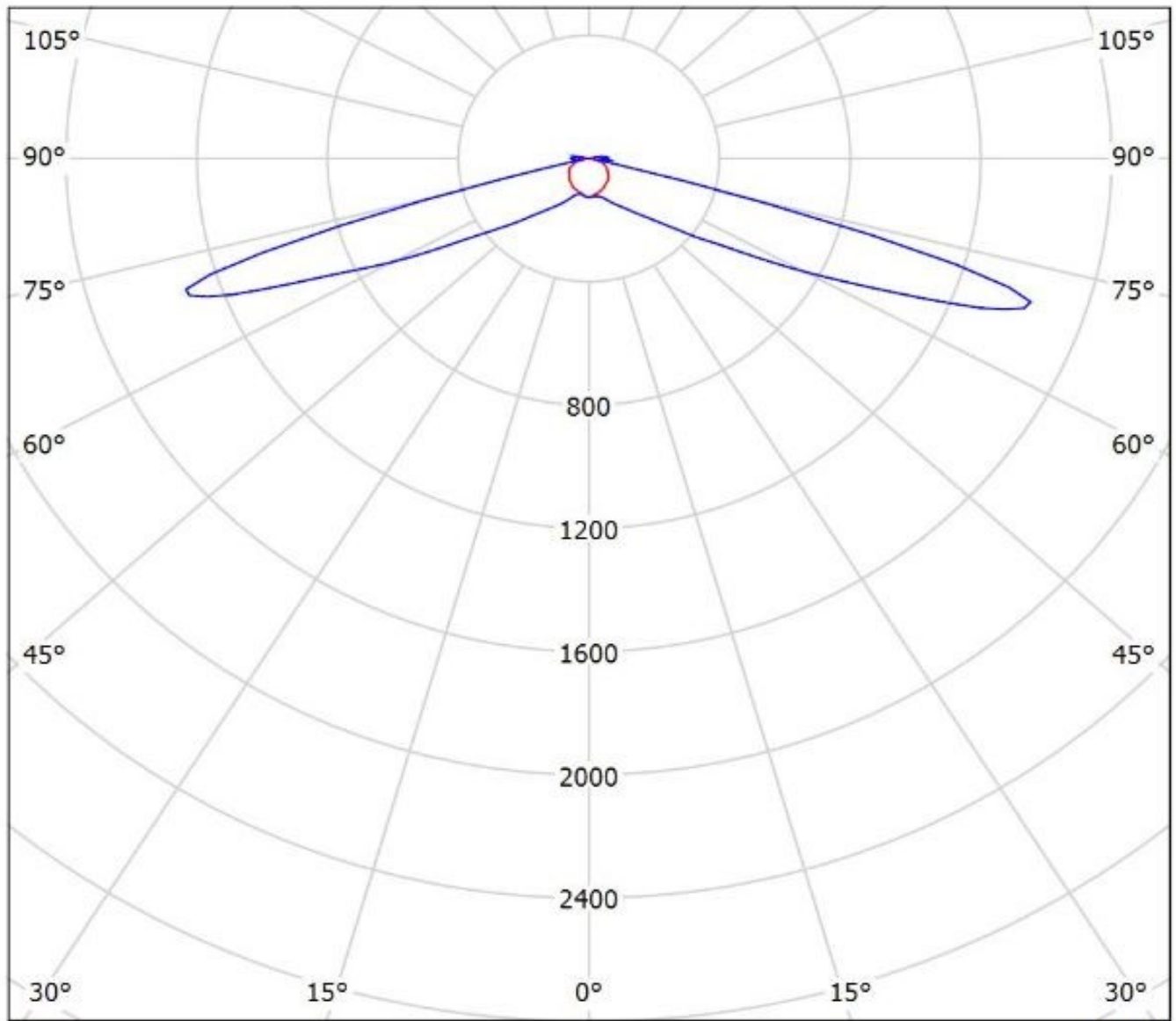
cd/klm

— C0 - C180 — C90 - C270

$\eta = 93\%$

Luminaire: Ledil C15135\_STRADA-2X2-T1\_(Square\_Gen3)

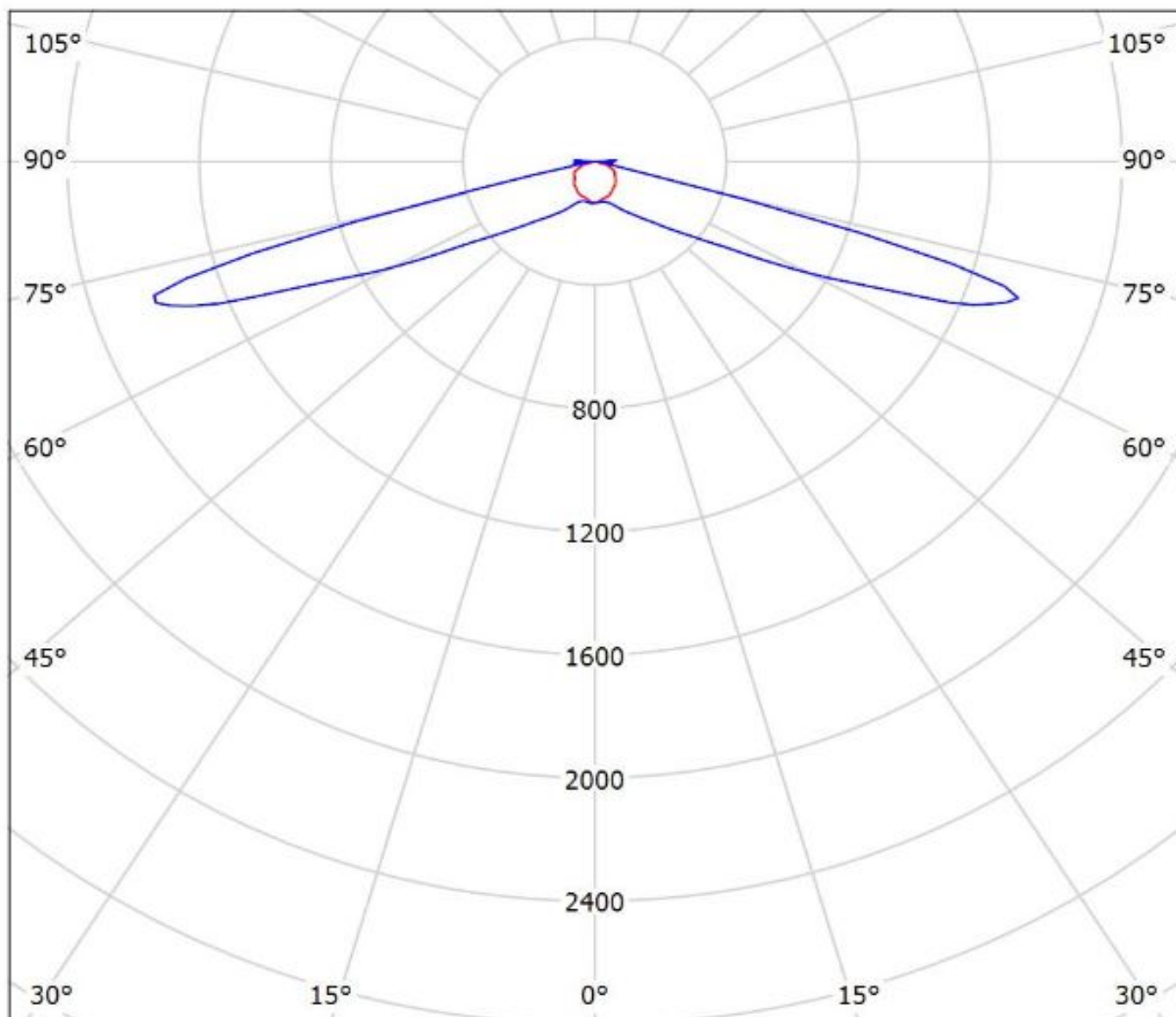
Lamps: 1 x Osram\_Square\_Gen3\_(GW\_CSSRM2.PM)\_461.082lm@250mA\_P=2.79075W\_I=0.250A



$\eta = 94\%$

cd/klm  
— C0 - C180    — C90 - C270

Luminaire: Ledil C15135\_STRADA-2X2-T1\_(Fortimo\_FastFlex\_LED\_board\_2x8/740\_DA\_G3)  
Lamps: 1 x Fortimo\_FastFlex\_LED\_board\_2x8/740\_DA\_G3\_1828.23lm@250mA\_P=11.667W\_I=0.25A



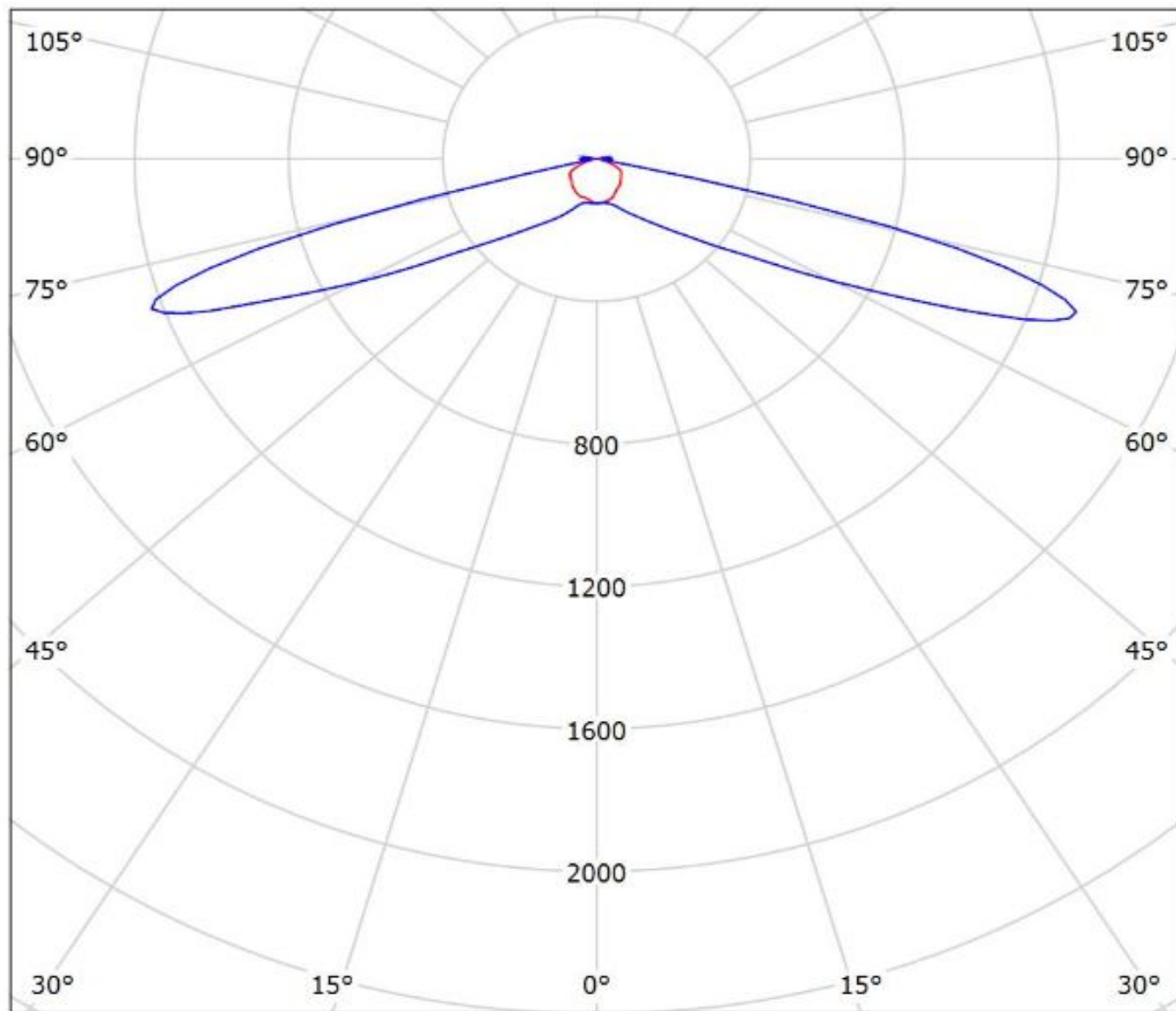
cd/klm

— C0 - C180    — C90 - C270

$\eta = 97\%$

Luminaire: Ledil C15135\_STRADA-2X2-T1\_(LH351B)

Lamps: 1 x Samsung\_LH351B\_2x2\_444.178lm@250mA\_P=2.8535W\_I=0.25A



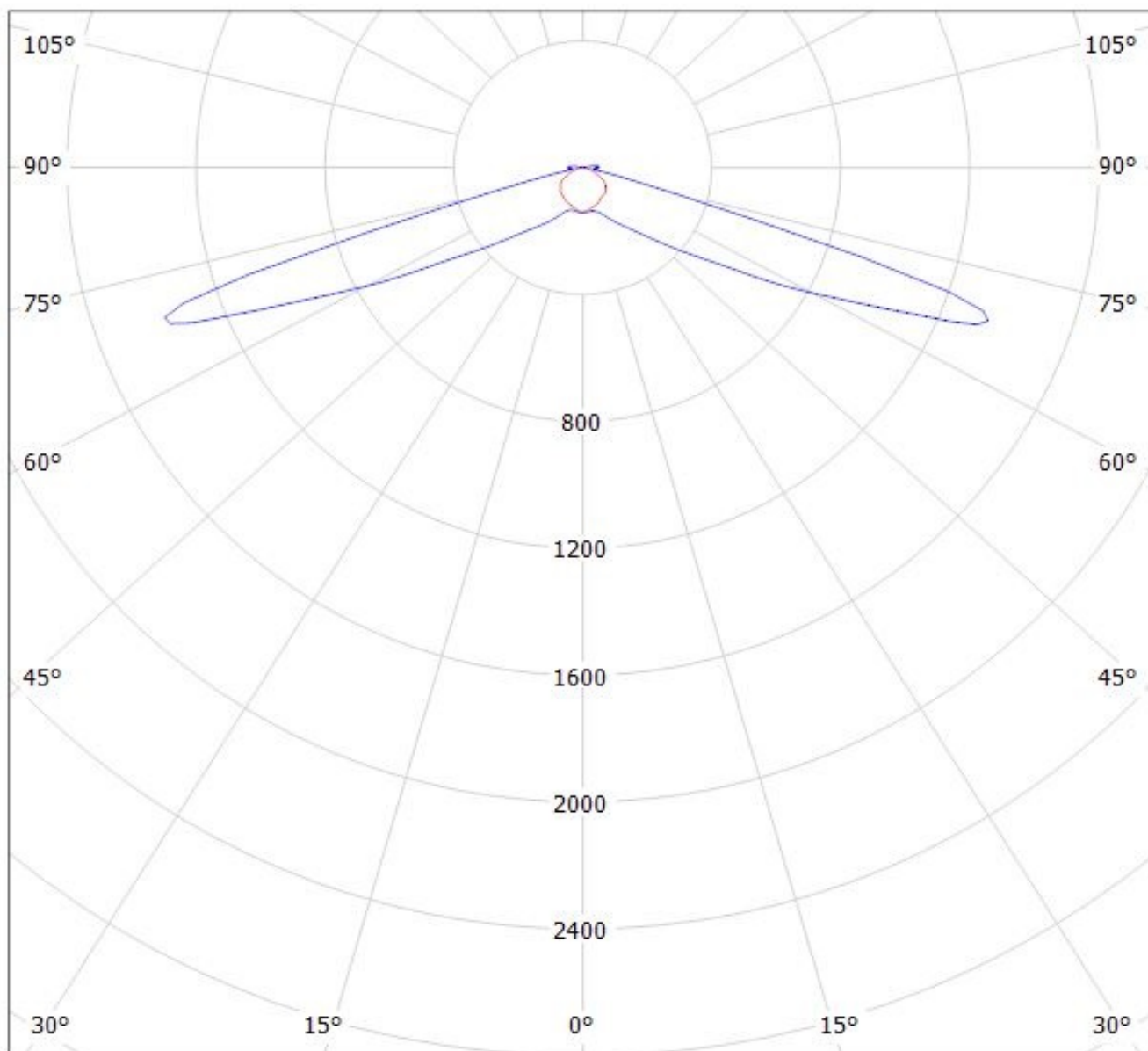
cd/klm

— C0 - C180

— C90 - C270

$\eta = 97\%$

Luminaire: LEDiL Oy C15135\_STRADA-2X2-T1\_(Tridonic\_Module\_RLE\_G1)  
Lamps: 1 x Tridonic\_Module\_RLE\_G1\_4594.42lm@700mA\_P=32.1515W\_I=0.700A



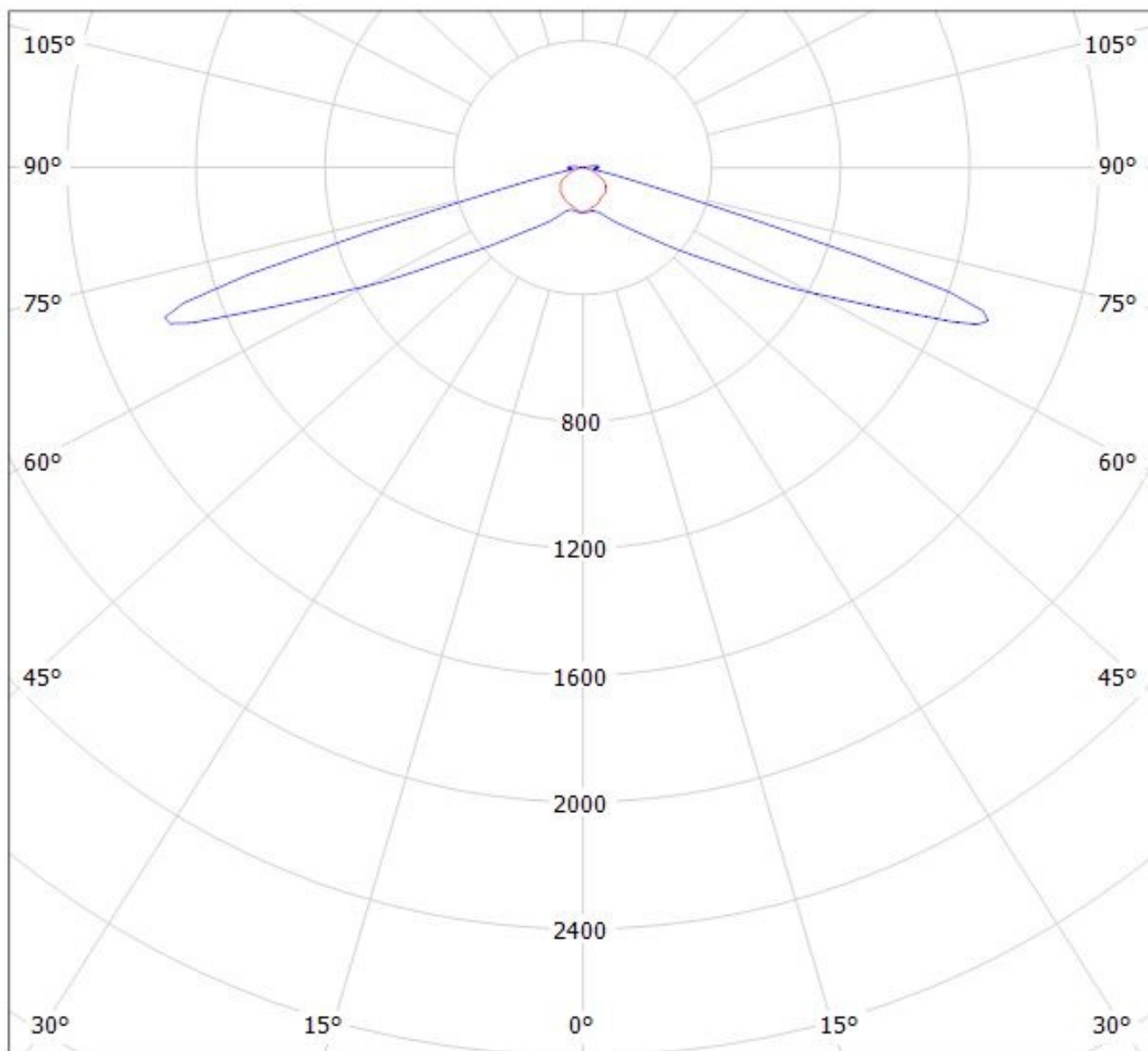
cd/klm

— C0 - C180    — C90 - C270

$\eta = 94\%$



Luminaire: LEDiL Oy C15135\_STRADA-2X2-T1\_(Tridonic\_Module\_RLE\_G1)  
Lamps: 1 x Tridonic\_Module\_RLE\_G1\_4594.42lm@700mA\_P=32.1515W\_I=0.700A



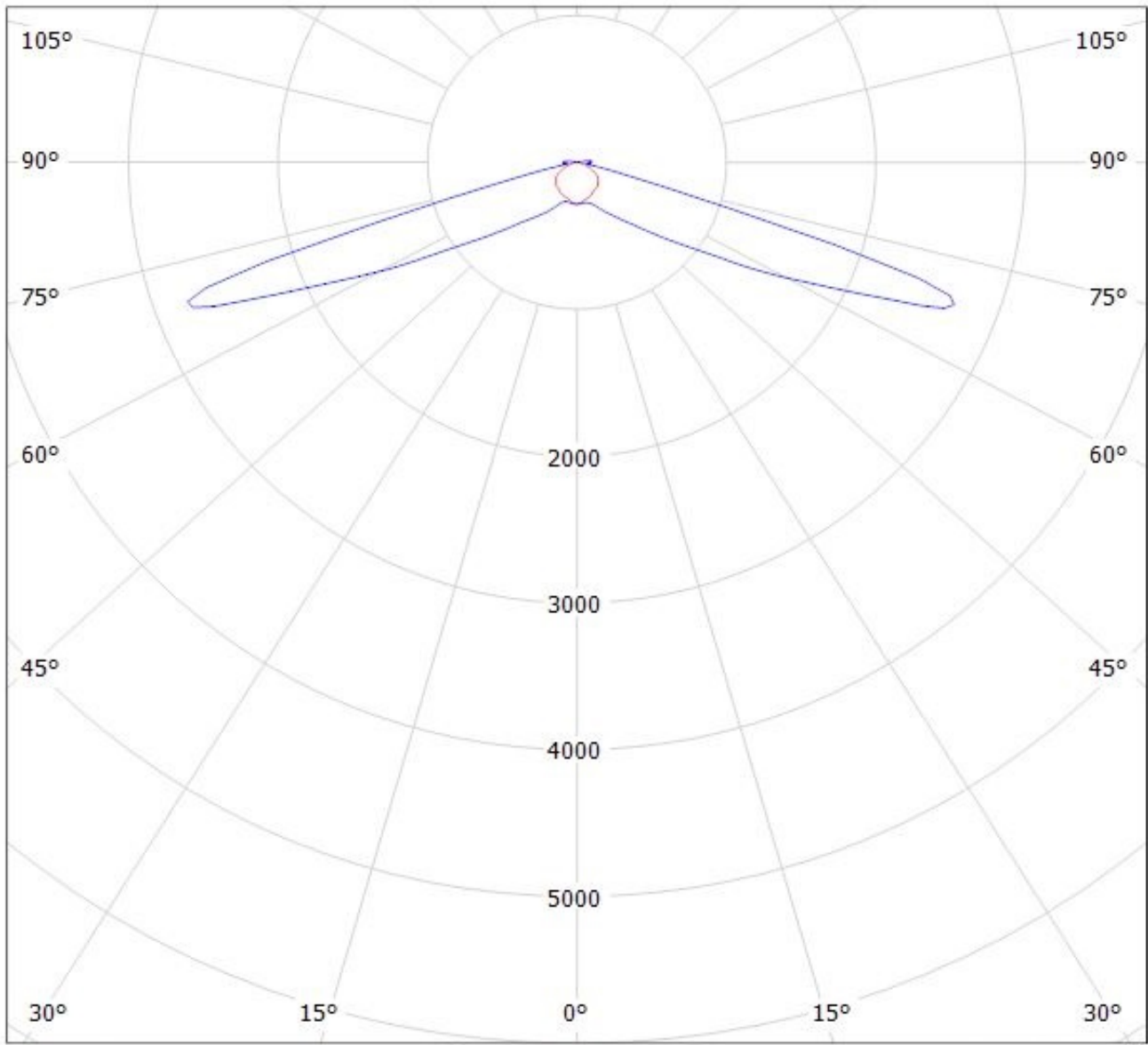
cd/klm

— C0 - C180 — C90 - C270

$\eta = 94\%$



Luminaire: LEDiL Oy C15135\_STRADA-2X2-T1\_(Tridonic\_Module\_RLE\_G1)  
Lamps: 1 x Tridonic\_Module\_RLE\_G1\_2288lm@700mA\_P=16W\_I=0.700A

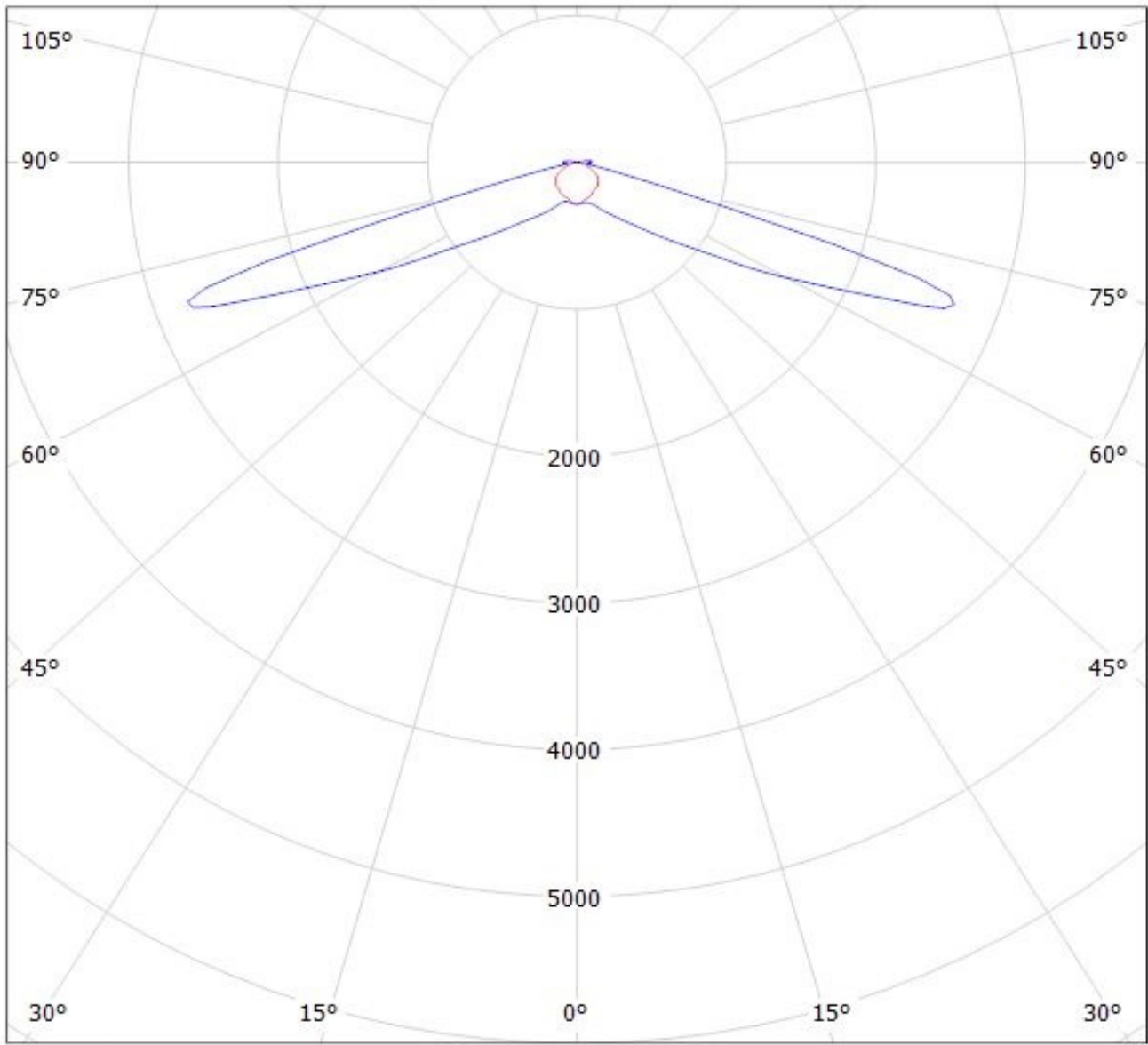


cd/klm

— C0 - C180    — C90 - C270

$\eta = 94\%$

Luminaire: LEDiL Oy C15135\_STRADA-2X2-T1\_(Tridonic\_Module\_RLE\_G1)  
Lamps: 1 x Tridonic\_Module\_RLE\_G1\_2288lm@700mA\_P=16W\_I=0.700A



cd/klm

— C0 - C180    — C90 - C270

$\eta = 94\%$

**NOTE: The typical divergence will be changed by different color, chip size and chip position tolerance. The typical total divergence is the full angle measured where the luminous intensity is half of the peak value.**