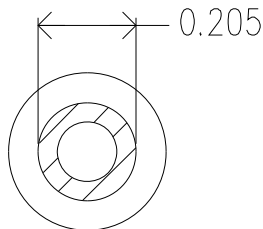
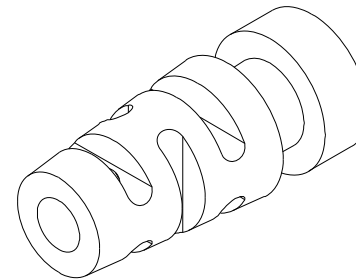
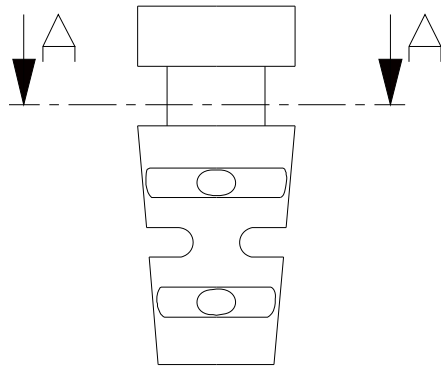
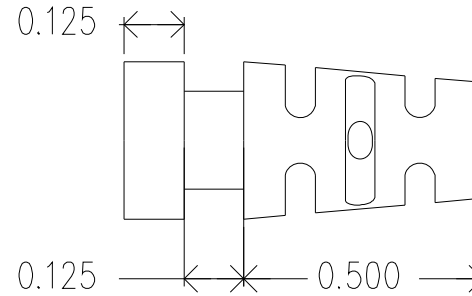
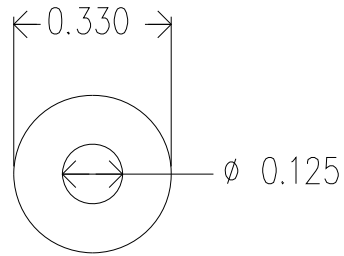


REVISIONS				
ZONE	REV.	DESCRIPTION	DATE	APPROVED



A-A (2.5 : 1)



Mold Material, ISC P/N: 5000214, M1472, PVC, RoHS, Blk

Dimensions are subject to change.
 PROPRIETARY AND CONFIDENTIAL
 THE INFORMATION CONTAINED IN THIS DRAWING IS THE SOLE PROPERTY OF ISC ENGINEERING. ANY REPRODUCTION IN PART OR AS A WHOLE WITHOUT THE WRITTEN PERMISSION OF ISC ENGINEERING IS PROHIBITED.

		DIMENSIONS ARE IN INCHES	NAME	DATE	ISC Engineering 4351 Schaefer Ave, Chino, CA 91710 Ph: 909-596-3315 Fax: 909-596-3335 www.iscengineering.com www.overmoldtooling.com	
		TOLERANCES:	DRAWN	R FIERRO		05/13/03
		FRACTIONAL \pm	CHECKED			
		ANGULAR: MACH \pm BEND \pm	ENG APPR.			
		TWO PLACE DECIMAL \pm	MFG APPR.			
		THREE PLACE DECIMAL \pm	Q.A.			
		MATERIAL --	COMMENTS:		ROUND, MULTIFLEX SR	
		FINISH --			1461080-125-E-205-330-0	
NEXT ASSY	USED ON				SIZE DWG. NO. REV.	
					A 1467093	
APPLICATION		DO NOT SCALE DRAWING			SCALE: 2:1 WEIGHT: SHEET 1 OF 1	