

10 9 8 7 6 5 4 3 2 1

F

E

D

C

B

A

F

E

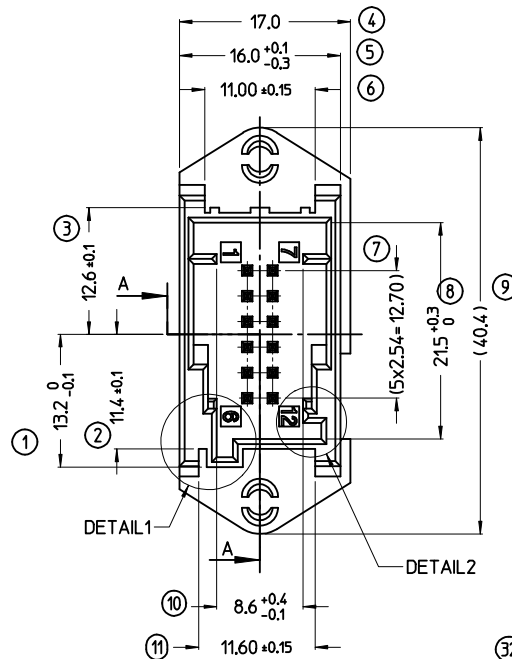
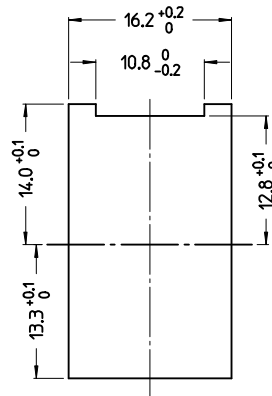
D

C

B

A

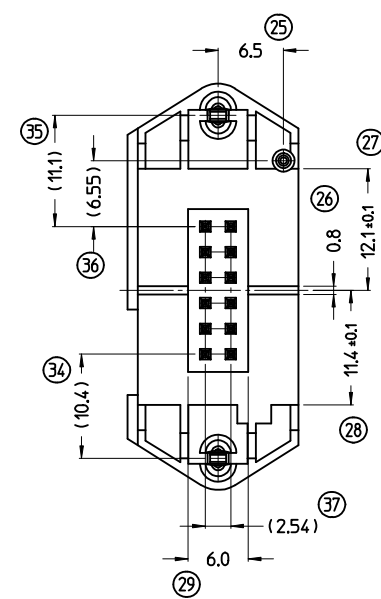
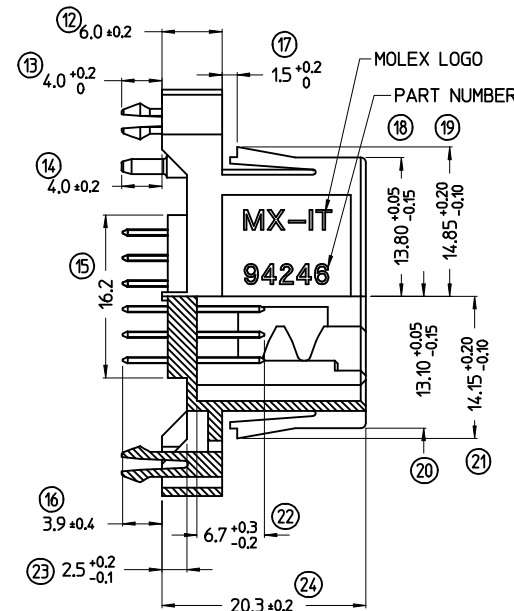
RECOMMENDED PANEL CUTOUT



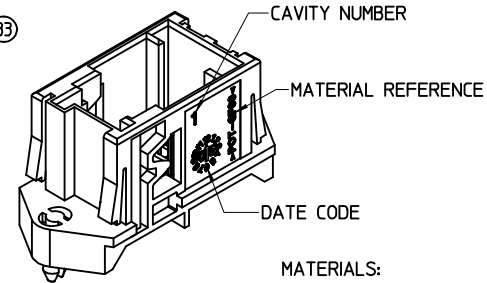
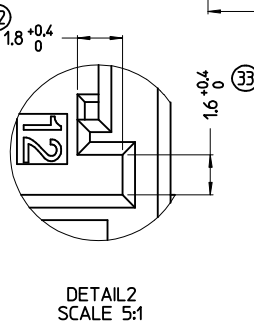
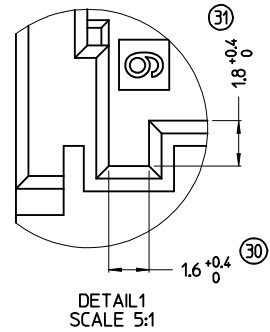
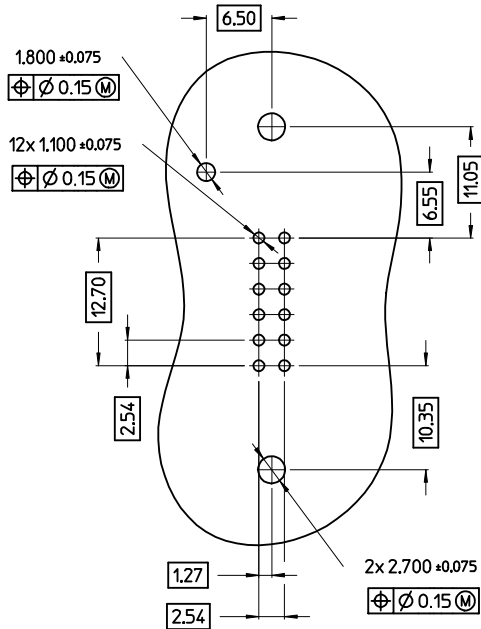
DETAIL1

DETAIL2

SEC. A-A



PCB LAYOUT (HEADER MOUNTING SIDE)  
PCB THICKNESS: 1.60 ± 0.15 mm



MATERIALS:  
- HOUSING: PCT 30% G.F. HB, BLUE COLOR  
- CONTACTS: BRASS PLATED

NOTES:  
[1] CHARACTERISTICS ACCORDING TO PS-94246-001  
[2] PACKAGING CONFIGURATION: SEE DWG. PK-94246-001

STD. DESCR: 'MOX HEADER BLUE W/BOARD LOCK 12 CKT'

<p>NEW REVISION EC NO: Z2007-0021 DRW: RDAGOSTI 2006/11/28 CHKD: SANTOSSO 2006/11/29 APPR: GZUIN 2006/11/29</p>	<p>QUALITY SYMBOLS ▽=0 ◁=0</p>	<p>GENERAL TOLERANCES (UNLESS SPECIFIED)</p>		<p>DIMENSION STYLE MM ONLY</p>		<p>SCALE 2:1</p>	<p>DESIGN UNITS METRIC</p>	<p>FIRST ANGLE PROJECTION</p>			
		<p>4 PLACES ± --- ± ---</p>	<p>3 PLACES ± --- ± ---</p>	<p>2 PLACES ± 0.3 ± ---</p>	<p>1 PLACE ± 0.3 ± ---</p>	<p>DRAWN BY RDAGOSTI</p>	<p>DATE 2003/10/23</p>	<p>TITLE 12 CKT MOX HEADER BLUE VERSION WITH BOARD LOCK</p>			
		<p>ANGULAR ± --- °</p>		<p>APPROVED BY GZUIN</p>	<p>DATE 2004/04/09</p>	<p>MOLEX MOLEX INCORPORATED</p>					
		<p>DRAFT WHERE APPLICABLE MUST REMAIN WITHIN DIMENSIONS</p>		<p>MATERIAL NO. 94246-0112</p>	<p>DOCUMENT NO. SD-94246-002</p>	<p>SHEET NO. 1 OF 1</p>		<p>THIS DRAWING CONTAINS INFORMATION THAT IS PROPRIETARY TO MOLEX INCORPORATED AND SHOULD NOT BE USED WITHOUT WRITTEN PERMISSION</p>			

9 8 7 6 5 4 3 2 1