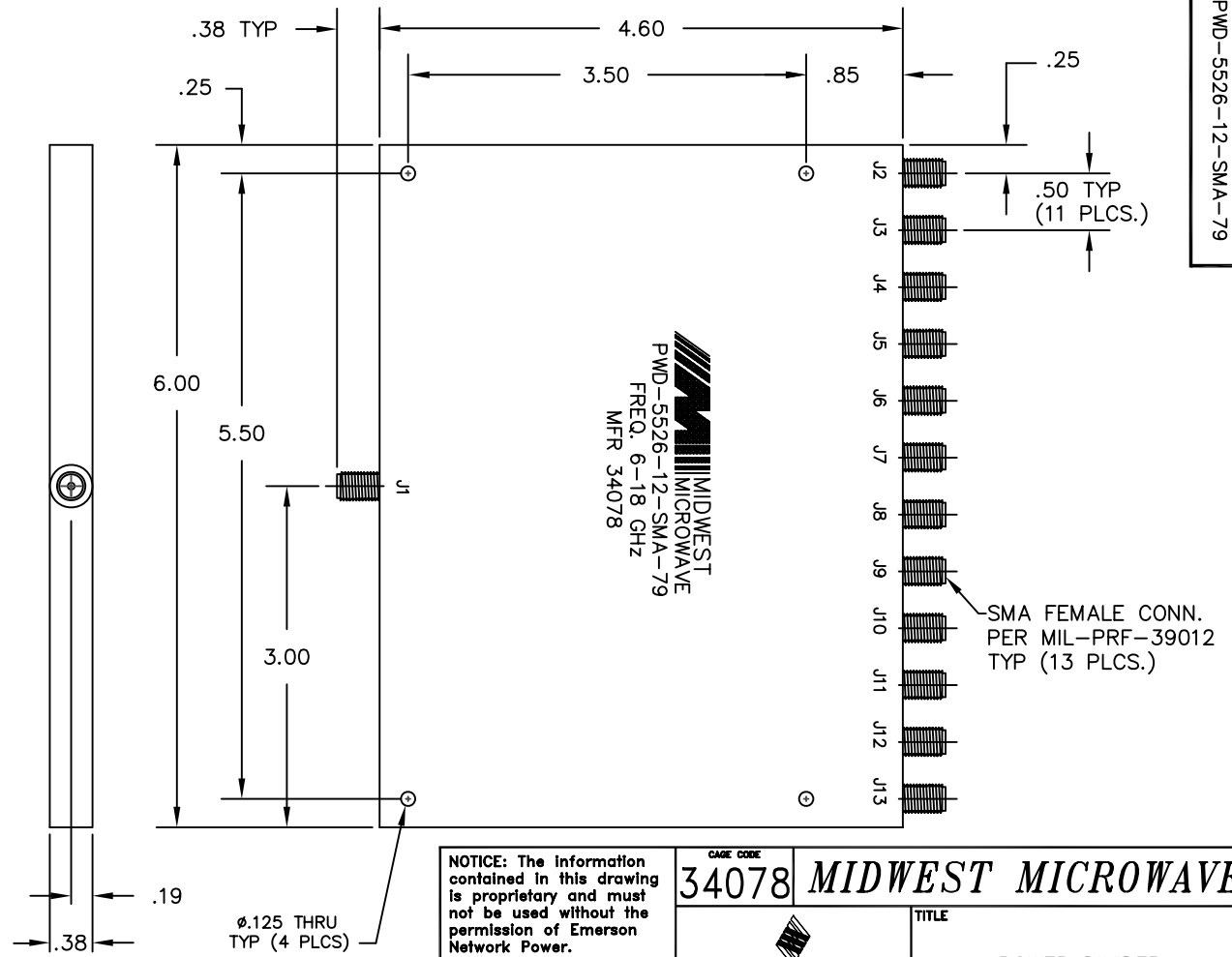


- NOTES:
- 1.0 ELECTRICAL SPECIFICATIONS:
 - 1.1 FREQUENCY RANGE: 6.0 to 18.0 GHz
 - 1.2 INSERTION LOSS: 0.4dB+0.10f dB MAX.,
WHERE f IS FREQUENCY IN GHz
(WHEN REFERENCED TO 10.8dB
NOMINAL POWER DIVISION LOSS)
 - 1.3 ISOLATION: 15dB MIN.
 - 1.4 VSWR: 1.50:1 MAX.
 - 1.5 OUTPUT UNBALANCE:
 - 1.5.1 AMPLITUDE: 0.8dB MAX.
 - 1.5.2 PHASE: 10° MAX.
 - 1.6 MAX. INPUT POWER: 10.0 WATTS, WITH ALL
OUTPUTS TERMINATED BY LOADS WITH
VSWR < 2.0:1
 - 1.7 STORAGE TEMP. RANGE: -65°C to +125°C
 - 1.8 OPERATING TEMP. RANGE: -54°C to +125°C
 - 2.0 WEIGHT: 540 GRAMS (18.8 Oz.)
 - 3.0 FINISHING:
 - 3.1 GREY OVER MIL-E-15090 TYPE II, CLASS 2
OVER MIL-C-5541 CLASS 3A
MEETS MIL-F-14072
MEETS MIL-E-5400
 - 3.2 MARKING: MARK UNIT AS SHOWN
USING BLUE INK
(REF.: SLK-08043-82-01)
 - 4.0 DIMENSIONS IN PARENTHESIS ARE
IN MILLIMETERS.



MODEL NUMBER
PWD-5526-12-SMA-79

REV.	DESCRIPTION	DATE
-	RELEASED	10/17/96
A	ECN 15663	12/26/96
B	ECN 18080	8/16/01
C	ECN 18750	9/26/02

NOTICE: The information contained in this drawing is proprietary and must not be used without the permission of Emerson Network Power.

UNLESS OTHERWISE NOTED DIMENSIONS ARE IN INCHES AND TOLERANCES ARE:
 3 PLACE DECIMALS ±.005
 2 PLACE DECIMALS ±.02
 FRACTIONS ±1/64
 PARALLELITY: T.I.R.
 FLATNESS: T.I.R.
 CONCENTRICITY: T.I.R.
 ANGLES AND PERPENDICULARITY: ±1°

CAGE CODE 34078		MIDWEST MICROWAVE	
EMERSON Network Power		TITLE POWER DIVIDER OUTLINE DRAWING	
Connectivity Solutions		DRAWING NUMBER PWD-5526-12-SMA-79-01	
DRAWN/DATE J. VERNON 10/17/96	ENG/DATE P. GOODMAN 10/17/96	REV. C	
CHECKED/DATE	APPROVED/DATE	SCALE: 5=1	SHEET 1 of 1