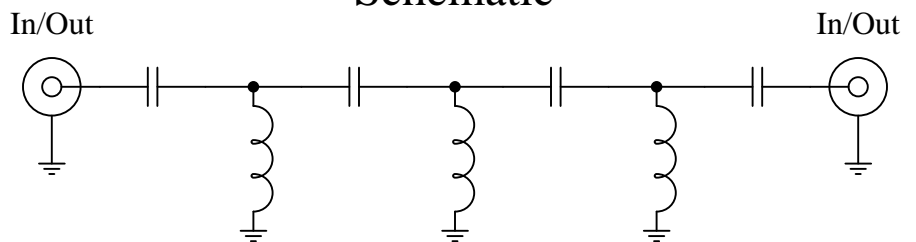




Schematic



Features:

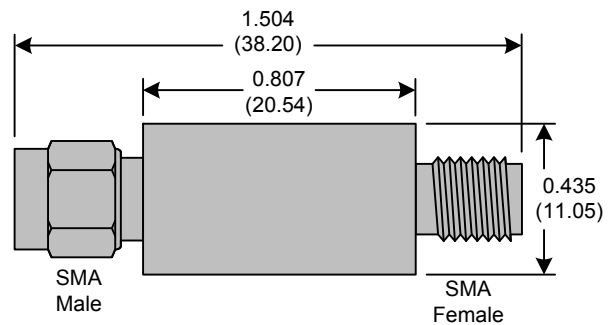
- 7<sup>th</sup> Order Butterworth Response
- 50Ω SMA Connectors

Applications:

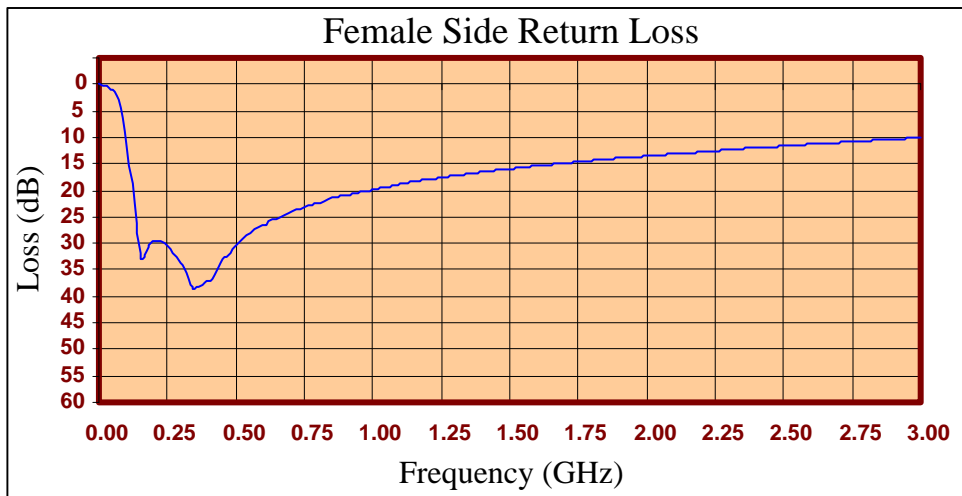
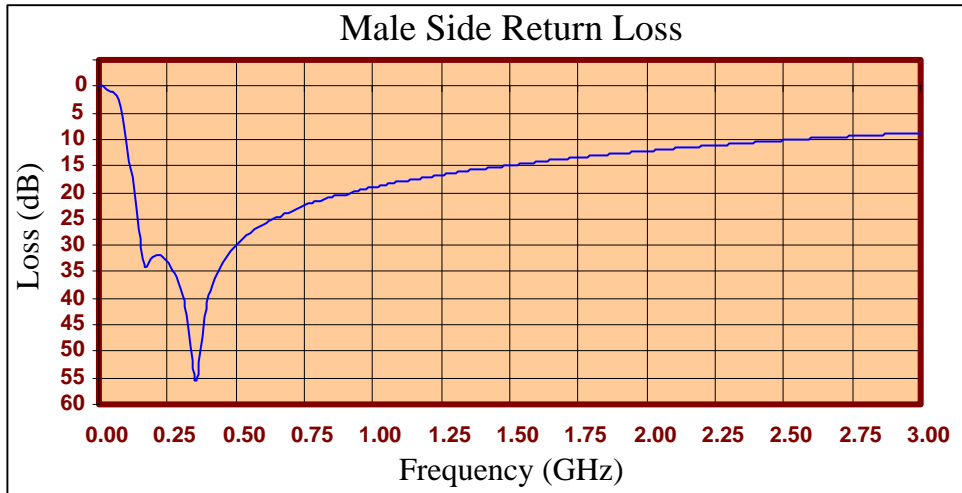
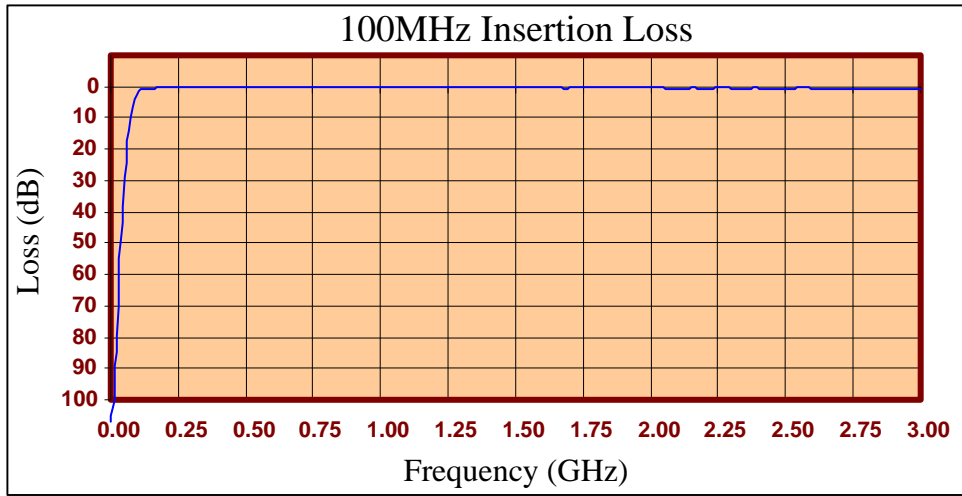
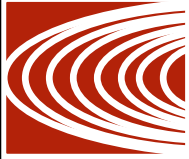
- Test Equipment
- Lab Use

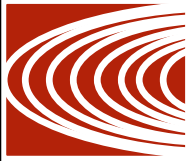
Maximum Ratings:

- +36dBm (4 Watts)
- Operating Temperature: -40°C to 85°C
- Storage Temperature: -55°C to 100°C



Crystek's line of High Pass Filters are designed in a rugged SMA housing. This filter line has excellent out-of-band rejection. Designed for Test Equipment and General Lab Use.





FREQ (MHz)	INSERTION LOSS (dB)	Male Return Loss (dB)	Female Return Loss (dB)
0.3	103.66	0.01	0.00
15.3	97.16	0.06	0.10
30.3	62.05	0.45	0.39
45.3	38.12	0.86	0.86
60.3	20.78	1.48	1.45
75.3	9.68	2.66	2.70
90.3	3.93	5.81	6.11
105	1.72	11.12	11.80
120	1.03	17.22	18.75
135	0.73	23.72	26.13
150	0.60	30.48	32.89
165	0.54	33.98	32.51
180	0.44	33.29	30.42
195	0.41	32.04	29.40
210	0.40	31.73	29.52
225	0.31	31.75	29.49
240	0.32	32.42	29.97
255	0.29	33.43	30.54
270	0.29	34.65	31.71
285	0.26	36.10	32.50
300	0.24	38.39	33.80
330	0.24	46.09	36.57
405	0.21	38.50	36.95
450	0.17	33.40	33.10
510	0.23	29.49	29.88
585	0.18	26.66	26.78
705	0.16	23.39	23.94
810	0.18	21.51	22.26
900	0.23	20.38	20.91
1005	0.25	19.03	19.76
1245	0.25	16.75	17.64
1500	0.42	14.96	15.92
1755	0.23	13.43	14.60
1995	0.48	12.26	13.59
2250	0.49	11.13	12.55
2505	0.70	10.16	11.64
2745	0.89	9.43	10.83
3000	0.94	8.80	10.05

**Product Control:**

Crystek Part Number:	CHPFL-0100	Release Date:	18-Aug-2015
Revision Level:	D	Responsible:	K. Piotrowicz

Rev D
Page 3 of 3

