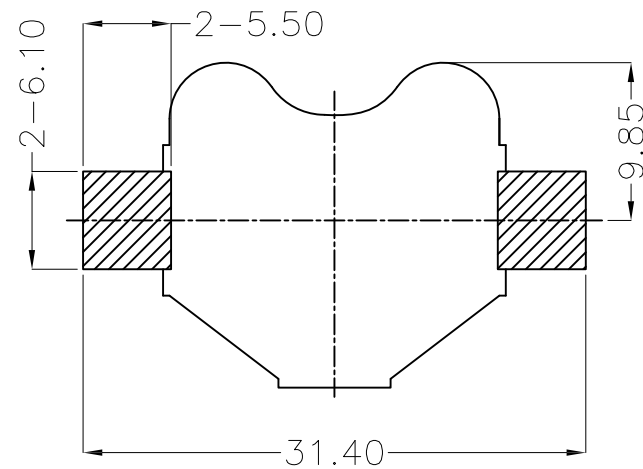
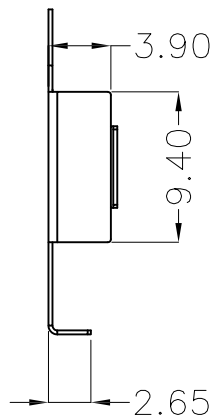
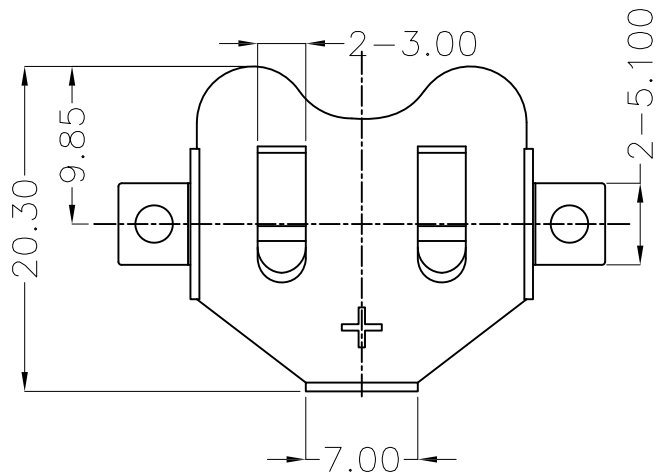
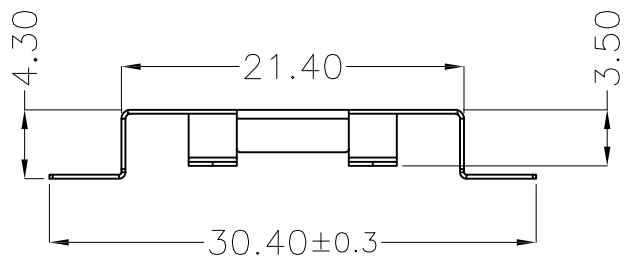


APPROVED: _____
 DATE: _____ TITLE: _____

| | | | | |
|-----|-------|-------------|---------|------|
| Rev | AWO # | Description | Date | Appr |
| - | | RELEASED | 3/24/20 | |



RECOMMENDED PCB LAYOUT



SPECIFICATIONS:
 Material: Phosphor Bronze, Nickel plated. T=0.25mm
 Environmental:
 Lead free, RoHS compliant



UNLESS OTHERWISE SPECIFIED
 ALL DIMENSIONS ARE MILLIMETERS
 TOLERANCES: EXCEPT AS NOTED
 MM ANGLE
 X ± 0.30 X ± 1°
 X.X ± 0.25 X.X ± 0.5°
 X.XX ± 0.20
 X.XXX ± 0.10

ADAM TECH
INTERCONNECTS
 909 Rahway Avenue,
 Union, NJ 07083
 Phone: 908-687-5000
 Fax: 908-687-5710

| APPROVALS | | DATE |
|-----------|----|---------|
| DRAWN | LH | 3/24/20 |
| CHECKED | MY | 3/24/20 |
| APPROVED | | |

| | | |
|-----------------------|------------|--------------|
| TITLE | | |
| BATTERY CLIP, CR 2032 | | |
| SIZE | PART NO. | REV. |
| X | BH-67E-5 | - |
| REF: S00136C | SCALE: NTS | SHEET 1 OF 1 |