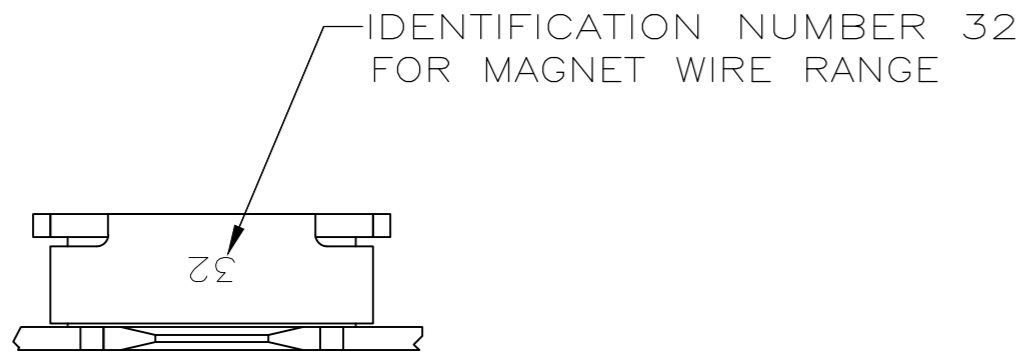


THIS DRAWING IS UNPUBLISHED. RELEASED FOR PUBLICATION
 © COPYRIGHT - By - TE CONNECTIVITY ALL RIGHTS RESERVED.

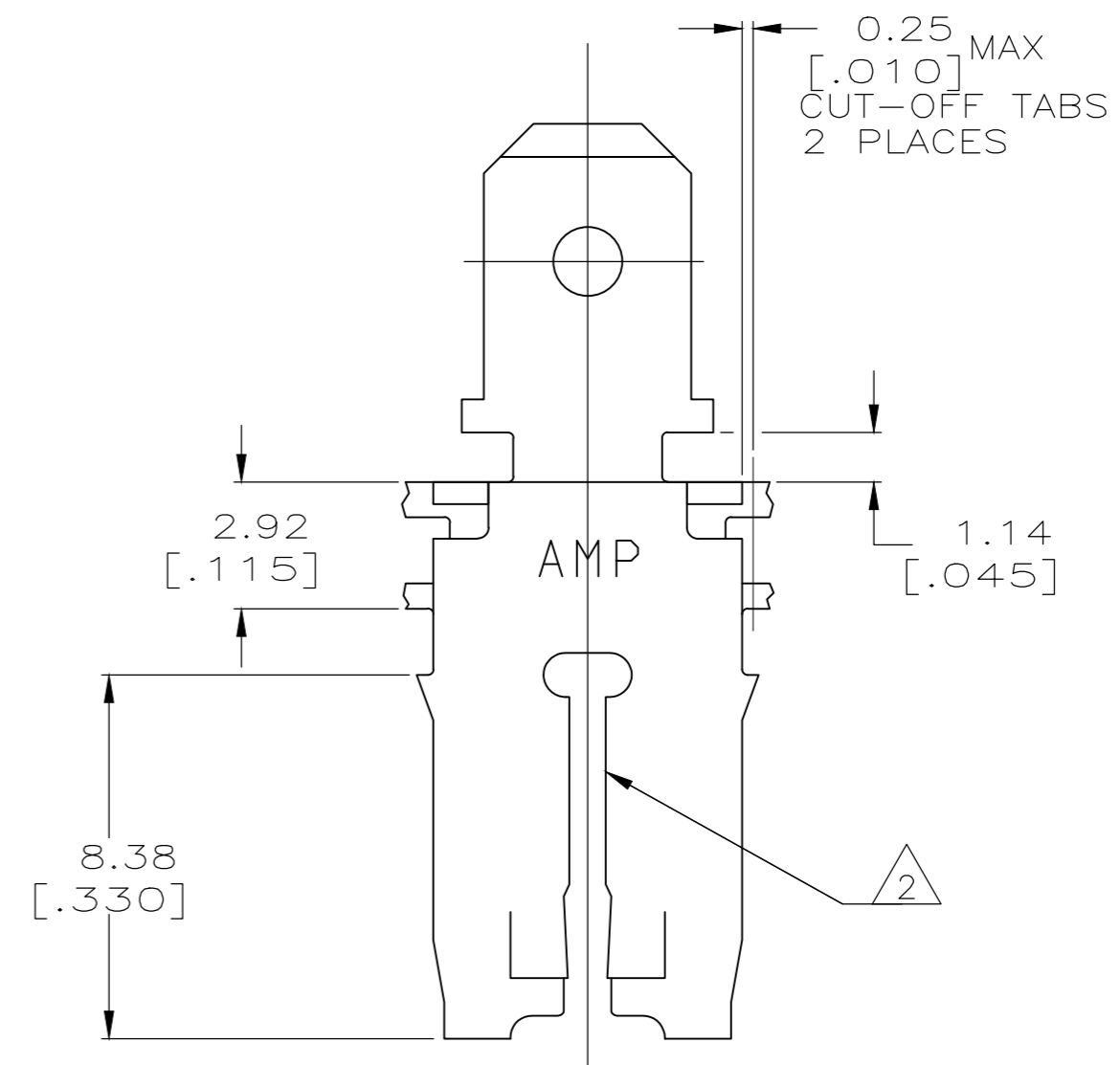
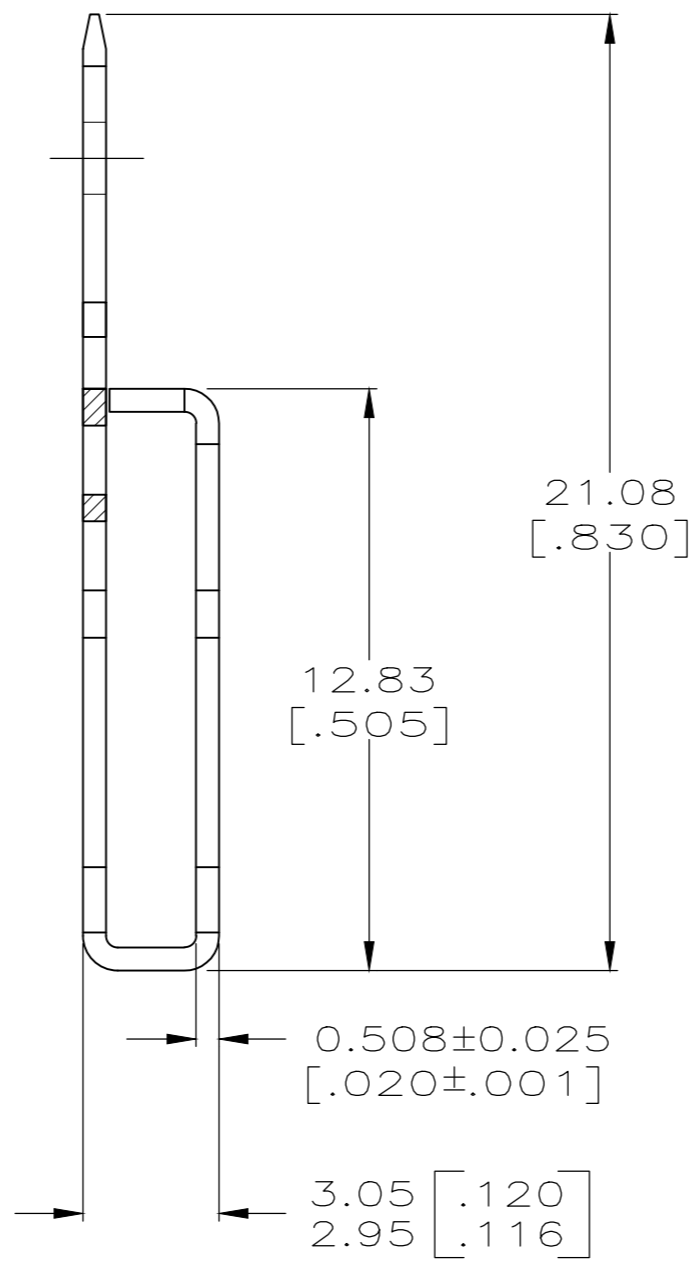
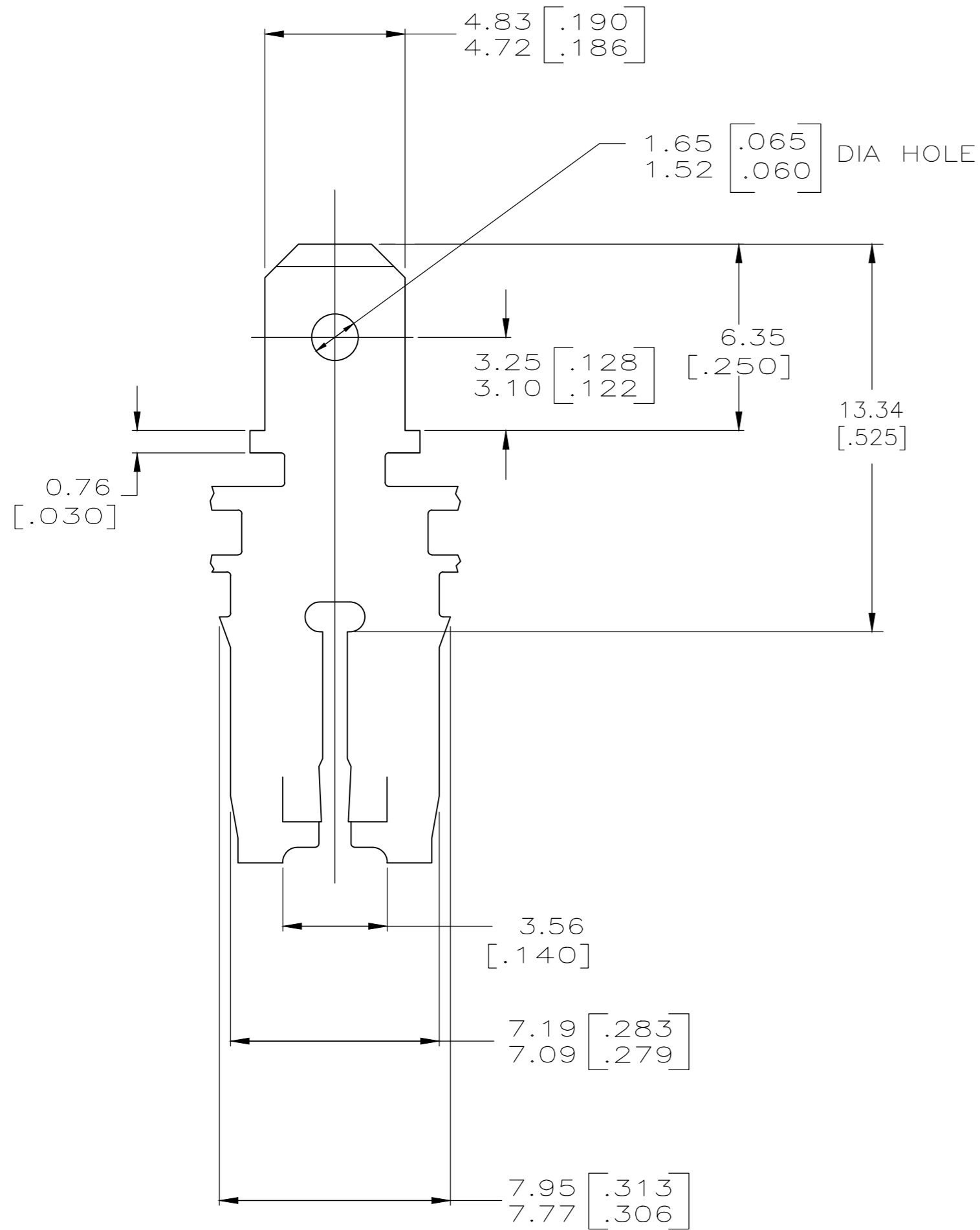
LOC		DIST		REVISIONS			
P	LTR	DESCRIPTION		DATE	DWN	APVD	
AF	50	C5		REVISED PER ECR-20-011753	10SEP2020	BDA	KR



△ 5 VARNISH RESIST OVER TIN PLATE

- 1 CONTINUOUS STRIP ON REELS WITH TERMINALS LOCATED ON 8.38±0.08 [.330±.003] CENTERS.
- △ 2 SLOT TERMINATES A SINGLE COPPER MAGNET WIRE ONLY. COPPER RANGE: 1.09-1.29mm [#17.5-#16] AWG OR SLOT TERMINATES A SINGLE OR DOUBLE ALUMINIUM MAGNET WIRE ALUMINUM RANGE: 1.22-1.45mm [#16.5-#15.0] AWG. ALUMINUM WIRE RANGE APPLIES FOR POST-TIN PLATED VERSIONS ONLY.
- 3 AFTER INSERTION INTO PLASTIC HOLDER TAB PORTION MUST BE BENT OVER 45° TO 90° OR POTTED-IN TO PREVENT PULL-OUT WHEN MATING RECEPTACLE IS DISCONNECTED.

△ 4 TIN PLATE



△ 4	63667-3
△ 5	63667-1
FINISH	PART NO

THIS DRAWING IS A CONTROLLED DOCUMENT.		DWN 8/20/92 MICHAEL S. FEHER	TE Connectivity	
DIMENSIONS: mm [INCHES]		CHK 8/21/92 JEFF R. RUTH	NAME	
TOLERANCES UNLESS OTHERWISE SPECIFIED:		APVD 8/28/92 NELSON E. NEFF	PRODUCT SPEC	
0 PLC ± -		108-2053		SIZE CAGE CODE DRAWING NO RESTRICTED TO
1 PLC ± -		APPLICATION SPEC		
2 PLC ± 0.25 [.010]		114-2066		A2 00779 C=63667
3 PLC ± -		WEIGHT -		SCALE 6:1 SHEET 1 of 1 REV C5
4 PLC ± -		CUSTOMER DRAWING		
ANGLES ± -		FINISH SEE TABLE		
MATERIAL BRASS				