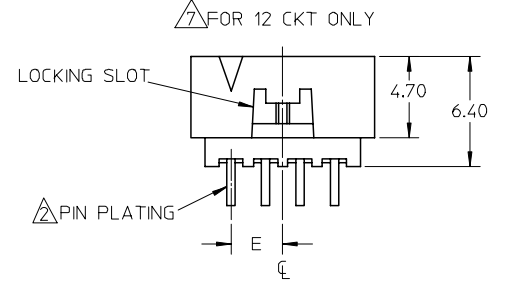
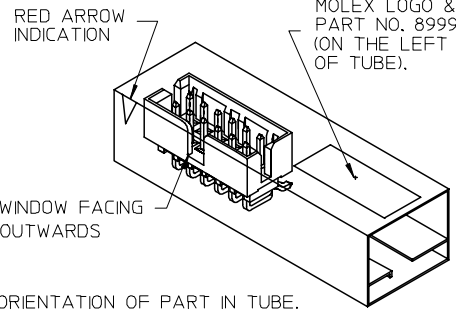
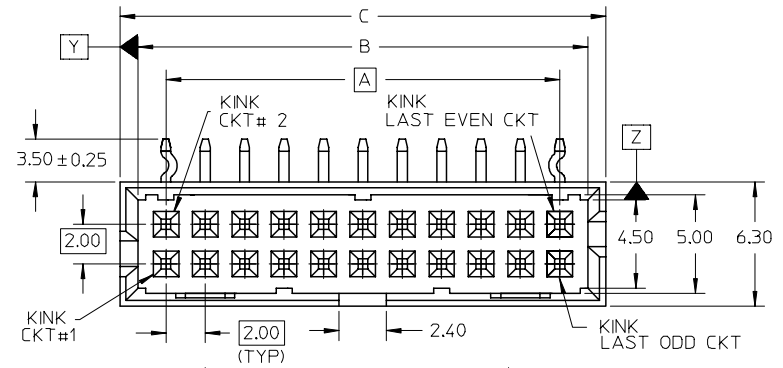
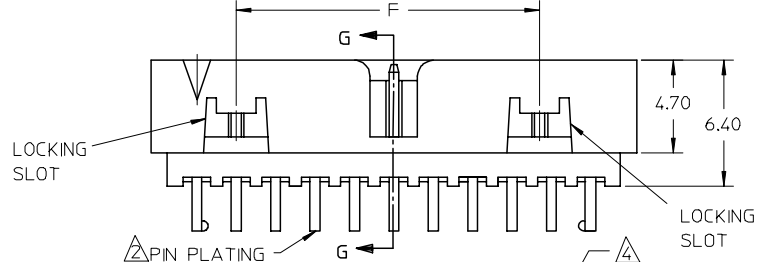


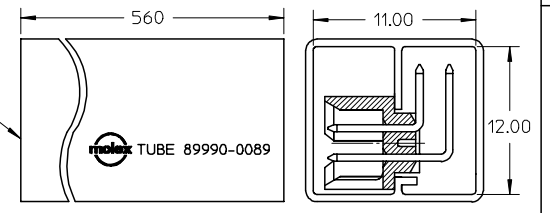
PART NO.	CKT SIZE	KINK CKT	DIMENSION					
			A	B	C	D	E	F
87833-1260	12	1, 2, 11 & 12	10.00	12.85	14.65	13.00	5.00	---
87833-1660	16	1, 2, 15 & 16	14.00	16.85	18.65	17.00	---	10.00



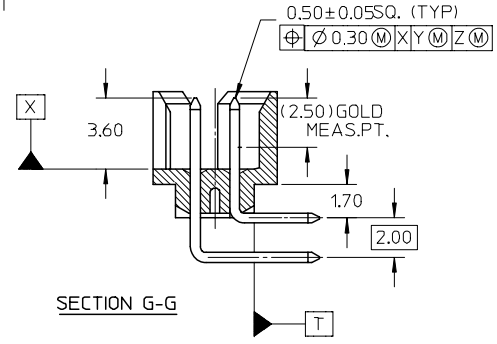
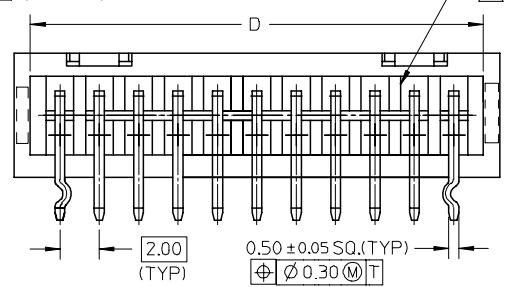
REF: ORIENTATION OF PART IN TUBE.
(FOR THE REFERENCE OF PART/TUBE ASSEMBLY.)



TUBE P/N :
89990-0089



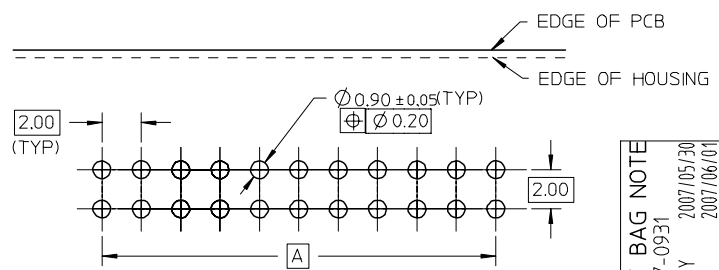
REF: ORIENTATION OF PART IN TUBE.



SECTION G-G

NOTES:

- MATERIAL :
HOUSING : 30% G.F., NYLON 46, UL94V-0, COLOR BLACK.
PIN : 0.50MM SQ. PHOSPHOR BRONZE.
- PLATING :
0.38um/15uin GOLD IN CONTACT AREA AND 1.88um/75uin MIN. TIN IN SOLDER TAIL AREA OVER 1.27um/50uin MIN. NICKEL OVERALL.
- PRODUCT SPECIFICATION PS-87831-027 APPLIES.
- LINKWAYS VARIES FROM PART TO PART BECAUSE OF DIFFERENT MOLD.
- RECOMMENDED PCB THICKNESS : 1.60 ± 0.10 MM.
- PARTS ARE TO BE PACKED IN TUBE WITH MOISTURE BARRIER BAG.
- 12 CKT HAS ONE LOCKING SLOT.



RECOMMENDED PCB PATTERN

ADD MOIST BAG NOTE
EC NO: S2007-0931
DRWN: GVENARLY 2007/05/30
CHKD: SXANG 2007/06/01
APPR: MLONG 2007/06/01

QUALITY SYMBOLS	DESCRIPTION
▽=0	
∇=0	

GENERAL TOLERANCES (UNLESS SPECIFIED)	DIMENSION STYLE	
	MM	INCH
4 PLACES	± ---	± ---
3 PLACES	± ---	± ---
2 PLACES	± 0.2	± ---
1 PLACE	± ---	± ---
ANGULAR ± 3 °		

DRAWN BY		DATE		TITLE	
BOKOK		2004/10/04		MGRID SHROUDED HEADER W/SLOT/STANDOFF AND KINKED SOLDER TAIL, R/A	
CHECKED BY		DATE		MOLEX INCORPORATED	
PTL IM		2004/10/14		SD-87833-039	
APPROVED BY		DATE		SHEET NO.	
SCLOW		2004/10/14		1 OF 1	

SCALE	DESIGN UNITS	THIRD ANGLE PROJECTION
NTS	METRIC	THIRD ANGLE PROJECTION

DRAFT WHERE APPLICABLE MUST REMAIN WITHIN DIMENSIONS

SEE TABLE

THIS DRAWING CONTAINS INFORMATION THAT IS PROPRIETARY TO MOLEX INCORPORATED AND SHOULD NOT BE USED WITHOUT WRITTEN PERMISSION