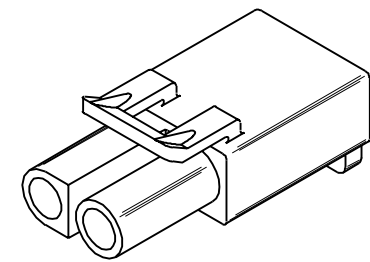
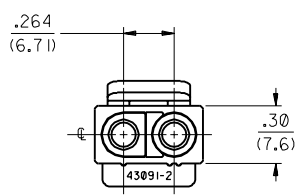
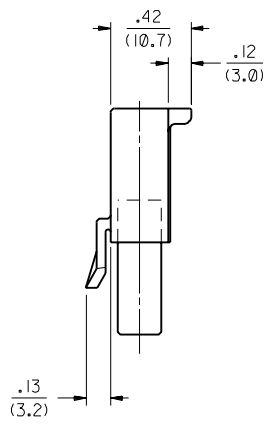
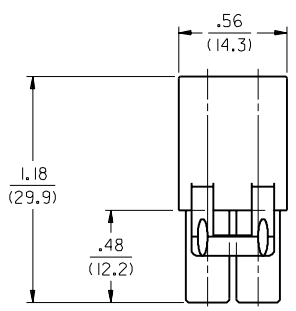
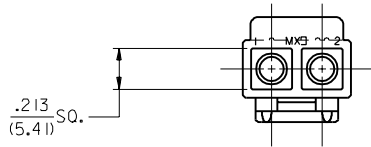


ITEM NO.	COLOR	
X 43091-0201	NATURAL	
X 43091-0202	BLUE	<b>OBSOLETE</b>
X 43091-0203	RED	<b>OBSOLETE</b>

**LEGEND**

43091-02\*\*  
CIRCUIT SIZE

UNINTELLIGENT SEQUENCE NO.



**NOTES:**

1. THESE HOUSINGS MATE WITH 3191 PLUGS AND ARE FOR USE WITH MOLEX .093/(2.36) DIAMETER SERIES TERMINALS.
2. MATERIAL: NYLON 66, U.L. RATED 94V-2.

B	OBsolete P/N UCR2002-02T0 COMERCI 01/10/11
A	X-REMOVE ECR U3 1804 CXC 12/15/93 RW
4	REVISE PER ECR U3 1417 CXC 10/13/93 RW
3	ADD CKT. I.D. #'S PER ECR U3 1335 CXC 9/7/93 RW
2	X-RELEASE ECR U3 1147 CXC 7/29/93

DIMENSIONS SHOWN (METRIC) INCH		UNLESS OTHERWISE SPECIFIED TOLERANCES ANGULAR ± 30° 10°		REVISE ONLY ON CAD SYSTEM	
3 PLACE ± .010	---	INCH	METRIC	TITLE	
2 PLACE ± .014	± 0.25			.093/(2.36) RECEPTACLE HOUSING W/SPECIAL LATCH	
1 PLACE ---	± 0.36			2 CKT., .264/(6.70) CTRS.	
DRAFT WHERE APPLICABLE MUST REMAIN WITHIN DIMENSIONS				PART NO. SD-43091-****	
DRAWN BY: CXC		CHK'D BY: RW		SHEET NO. 1 of 1	
APP'D BY: RAS		SCALE: 2 : 1		DATE: 7/29/93	
FILE NAME: S430912A.DGN		THIS DRAWING CONTAINS INFORMATION THAT IS PROPRIETARY TO MOLEX INC. AND SHOULD NOT BE USED WITHOUT WRITTEN PERMISSION.		DIV: CP	

43091

NO P.S.