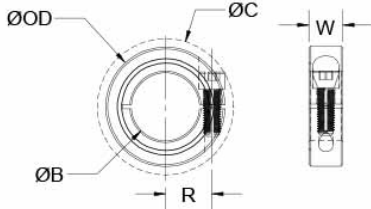




MCL-18E-AN

Ruland MCL-18E-AN, 1 1/8" International Shaft Collar, Anodized Aluminum, One-Piece Clamp Style, 48mm OD, 15mm Width



Description

Ruland MCL-18E-AN is a one-piece shaft collar with a 1.1250" bore, 48mm OD, and 15mm width. It is an international series shaft collar that has metric hardware and dimensions with inch bores. The clamp style design does not mar the shaft, is easy to remove, and is indefinitely adjustable. MCL-18E-AN is commonly used for guiding, spacing, stopping, mounting, and component alignment. Equipment manufacturers benefit from the tightly controlled face to bore perpendicularity (TIR of ? .05mm). Perpendicularity is critical for alignment when the shaft collar is used as a load bearing face, mechanical stop, or for mounting components such as gears or bearings. Proprietary processes have been developed by Ruland to maintain superior fit, finish, and holding power. MCL-18E-AN is stamped with the Ruland name and bore size for ease of identification. Forged screws test beyond DIN 912 12.9 standards to ensure maximum holding power. MCL-18E-AN is manufactured from solid bar stock sourced from select North American mills and machined to a fine burr free finish. Ruland uses high grade 2024 aluminum with an anodized finish for increased screw seating torque and added corrosion resistance. MCL-18E-AN is RoHS3 and REACH compliant and manufactured in our Marlborough, MA factory under strict controls using proprietary processes.

Product Specifications

| | | | |
|------------------------------------|---|-----------------------------------|--|
| Bore (B) | 1.1250 in | Bore Tolerance | +0.0020 in / +0.0005 in |
| Outer Diameter (OD) | 48 mm | Clearance Diameter (C) MAX | 54.7 mm |
| Width (W) | 15 mm | Width Tolerance | +0.076 mm / -0.254 mm |
| Recommended Shaft Tolerance | +0.0000 in / -0.0005 in | Forged Clamp Screw | M6 |
| Screw Material | 18-8 300 Series Stainless Steel | Hex Wrench Size | 5.0 mm |
| Screw Finish | Bright | Seating Torque | 9.6 Nm |
| Screw Location (R) | 19.00 mm | Number of Screws | 1 ea |
| Material Specification | 2024-T351 Aluminum Bar | Finish Specification | Sulfuric Anodized MIL-A-8625 Type II, Class 2 and ASTM B580 Type B Black Anodize |
| Manufacturer | Ruland Manufacturing | Country of Origin | USA |
| Temperature | -40°F to 200°F (-40°C to 93°C) | Weight (lbs) | 0.110200 |
| UPC | 634529113998 | Tariff Code | 8483.60.8000 |
| UNSPC | 31162811 | | |
| Note 1 | Performance ratings are for guidance only. The user must determine suitability for a particular application. | | |
| Prop 65 | ⚠ WARNING This product can expose you to the chemical Nickel (metallic), known to the State of California to cause cancer. For more information go to www.P65Warnings.ca.gov . | | |

Installation Instructions

1. Use the MCL-18E-AN international series shaft collar as it is received.
2. Wipe the bore clean.
3. Apply a thin coat of light oil to the shaft.
4. Place the collar onto the desired shaft location and tighten it using a 5.0 mm hex wrench until a slight resistance is felt.
5. Wring collar into its final position and tighten the screw to the full recommended seating torque of 9.6 Nm using a 5.0 mm torque wrench.