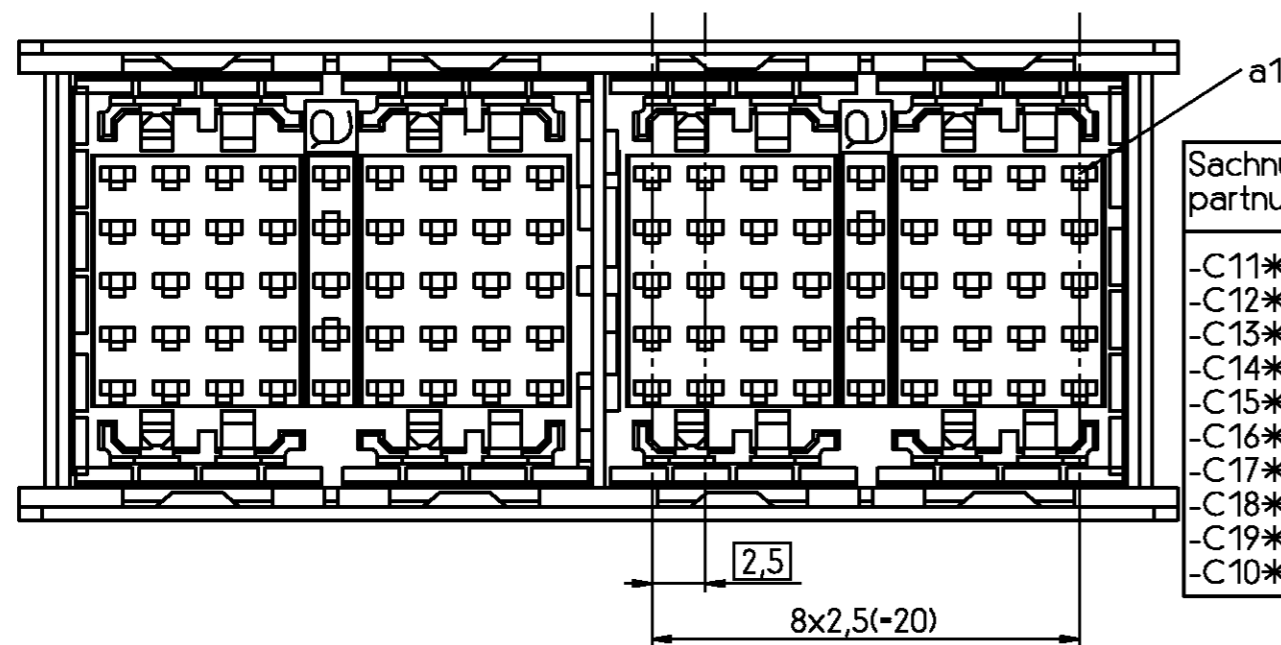
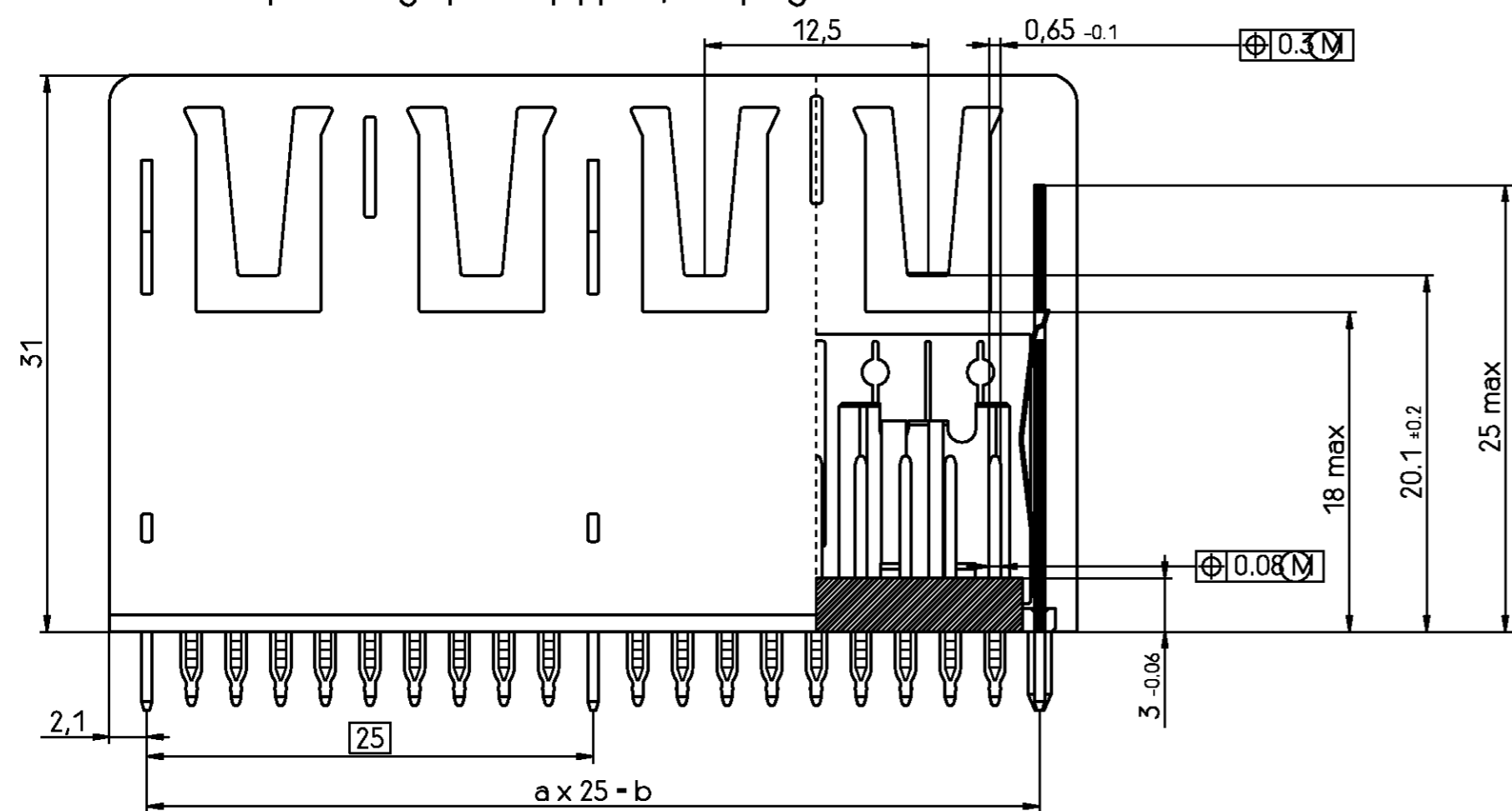
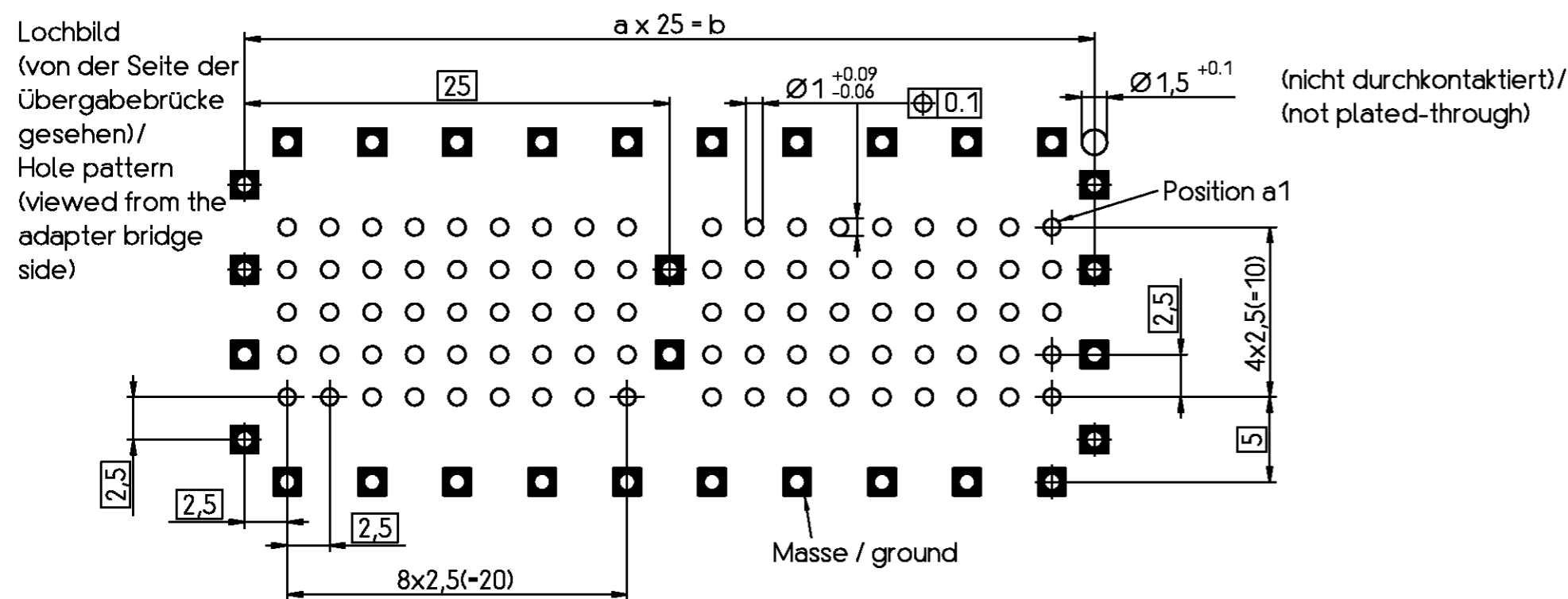


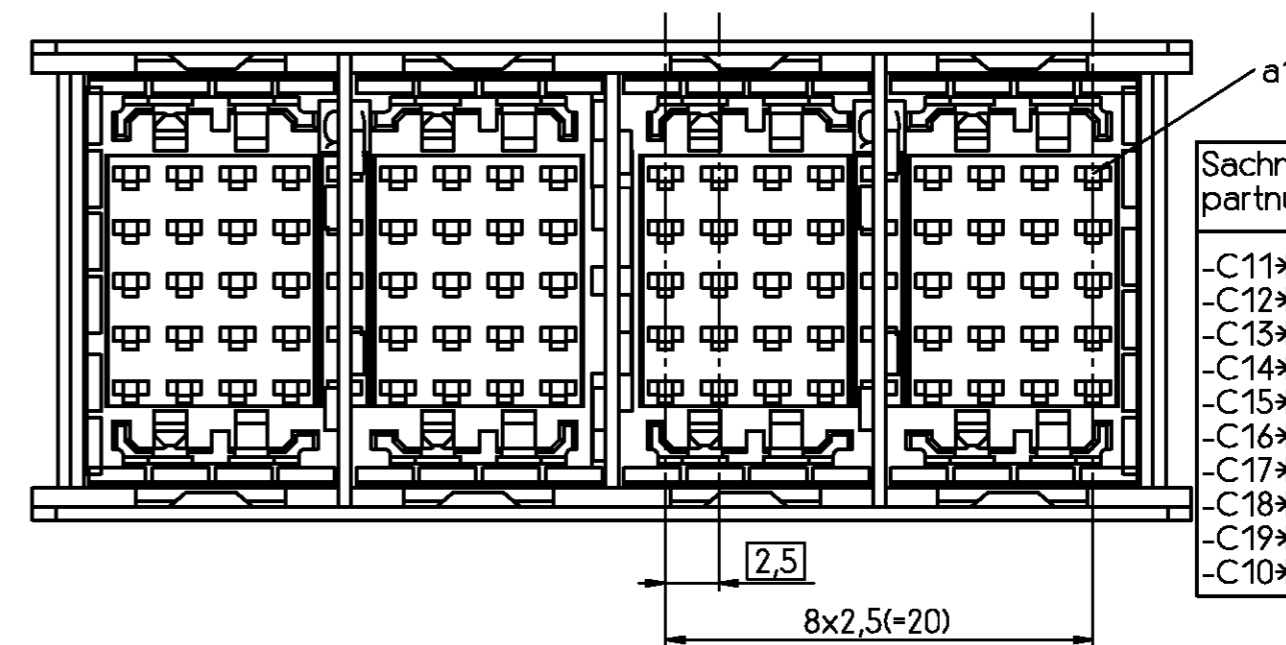
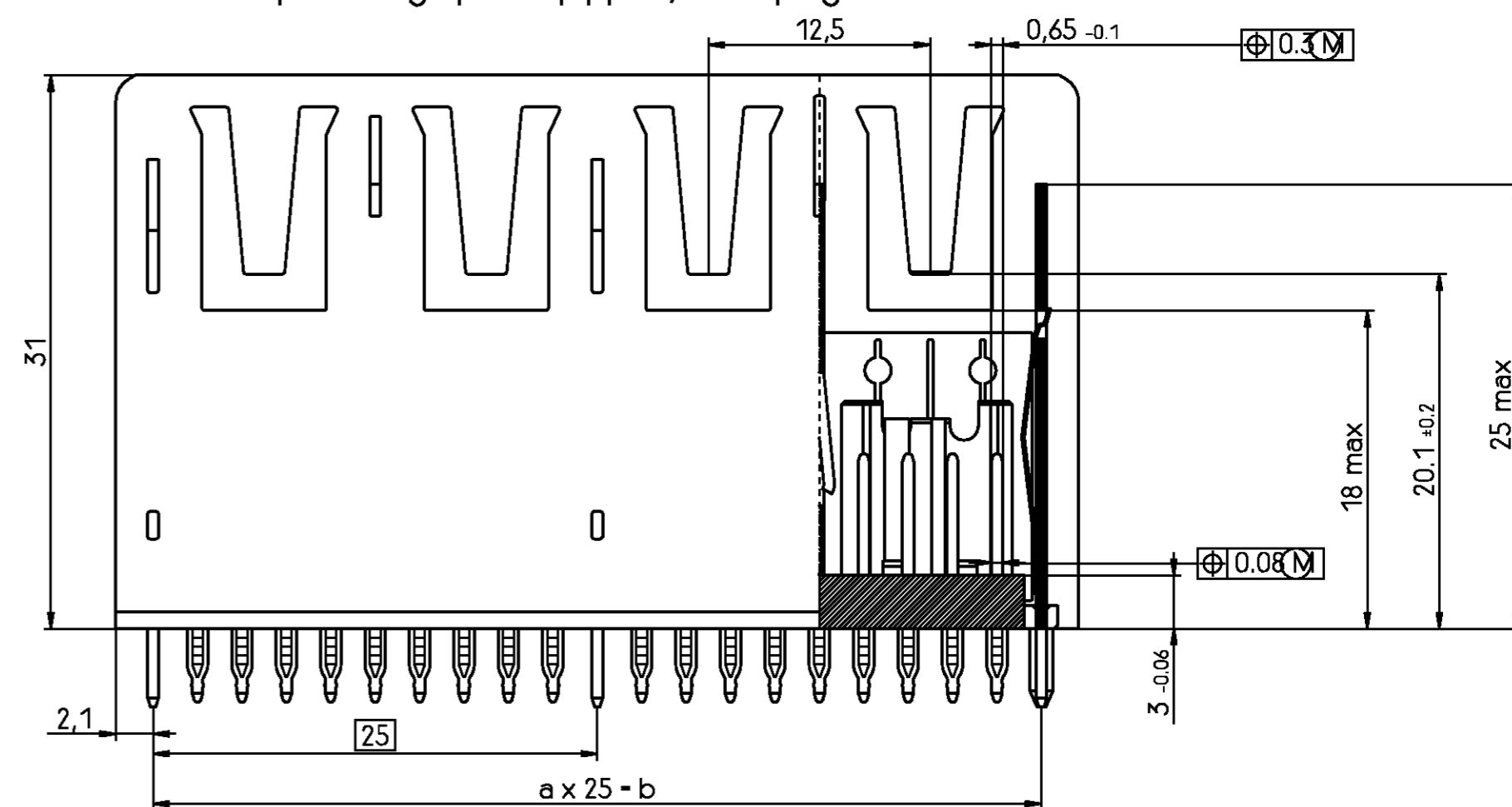
V23552-C1\*\*\*-B101 : Übergabebrücke vorbestückt, 1SU-Steckplätze/  
 V23552-C1\*\*\*-B101 : Adapter bridge pre-equipped, 1SU plug-in locations



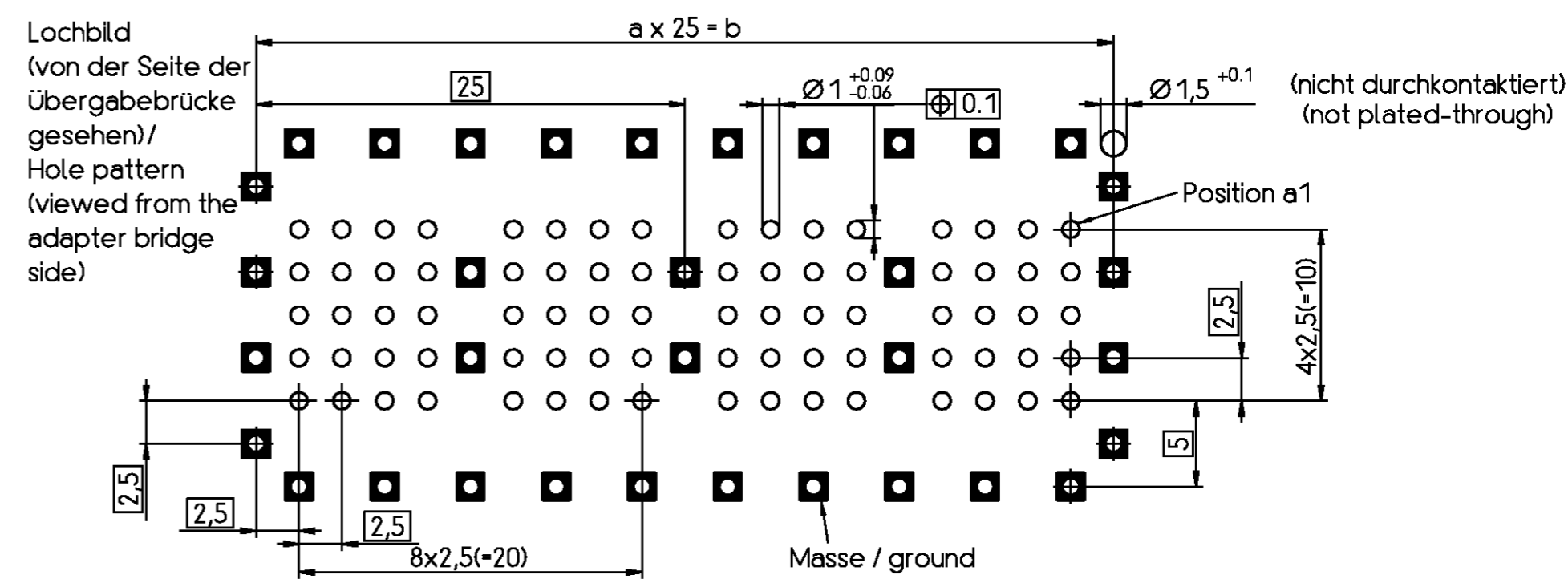
Sachnummer/ partnumber	a x 25 = b
-C11***-B101	1 x 25 = 25
-C12***-B101	2 x 25 = 50
-C13***-B101	3 x 25 = 75
-C14***-B101	4 x 25 = 100
-C15***-B101	5 x 25 = 125
-C16***-B101	6 x 25 = 150
-C17***-B101	7 x 25 = 175
-C18***-B101	8 x 25 = 200
-C19***-B101	9 x 25 = 225
-C10***-B101	10 x 25 = 250



V23552-C1\*\*\*-A101 : Übergabebrücke vorbestückt, 1/2SU-Steckplätze/  
 V23552-C1\*\*\*-A101 : Adapter bridge pre-equipped, 1/2SU plug-in locations



Sachnummer/ partnumber	a x 25 = b
-C11***-A101	1 x 25 = 25
-C12***-A101	2 x 25 = 50
-C13***-A101	3 x 25 = 75
-C14***-A101	4 x 25 = 100
-C15***-A101	5 x 25 = 125
-C16***-A101	6 x 25 = 150
-C17***-A101	7 x 25 = 175
-C18***-A101	8 x 25 = 200
-C19***-A101	9 x 25 = 225
-C10***-A101	10 x 25 = 250



THIS INFORMATION IS CONFIDENTIAL AND PROPRIETARY TO TYCO ELECTRONICS CORPORATION AND ITS WORLDWIDE SUBSIDIARIES AND AFFILIATES. IT MAY NOT BE DISCLOSED TO ANYONE, OTHER THAN TYCO ELECTRONICS PERSONEL, WITHOUT WRITTEN AUTHORIZATION FROM TYCO ELECTRONICS CORPORATION, HARRISBURG PENNSYLVANIA USA.

**TE** TE Connectivity

SCALE 2:1 WEIGHT

MATERIAL

LOC DIMENSIONS IN MM

GW

DATE 16.06.00

NAME Vanbesien

APP. COM PD

PART NAME

Techn-Lieferverpfl

Eng oblig for deliv

TOLERANCE UNLESS SPECIFIED OTHERWISE

PART NO.

V23552-C1\*\*\*-+10\*-\*-7426

SHT. 1+

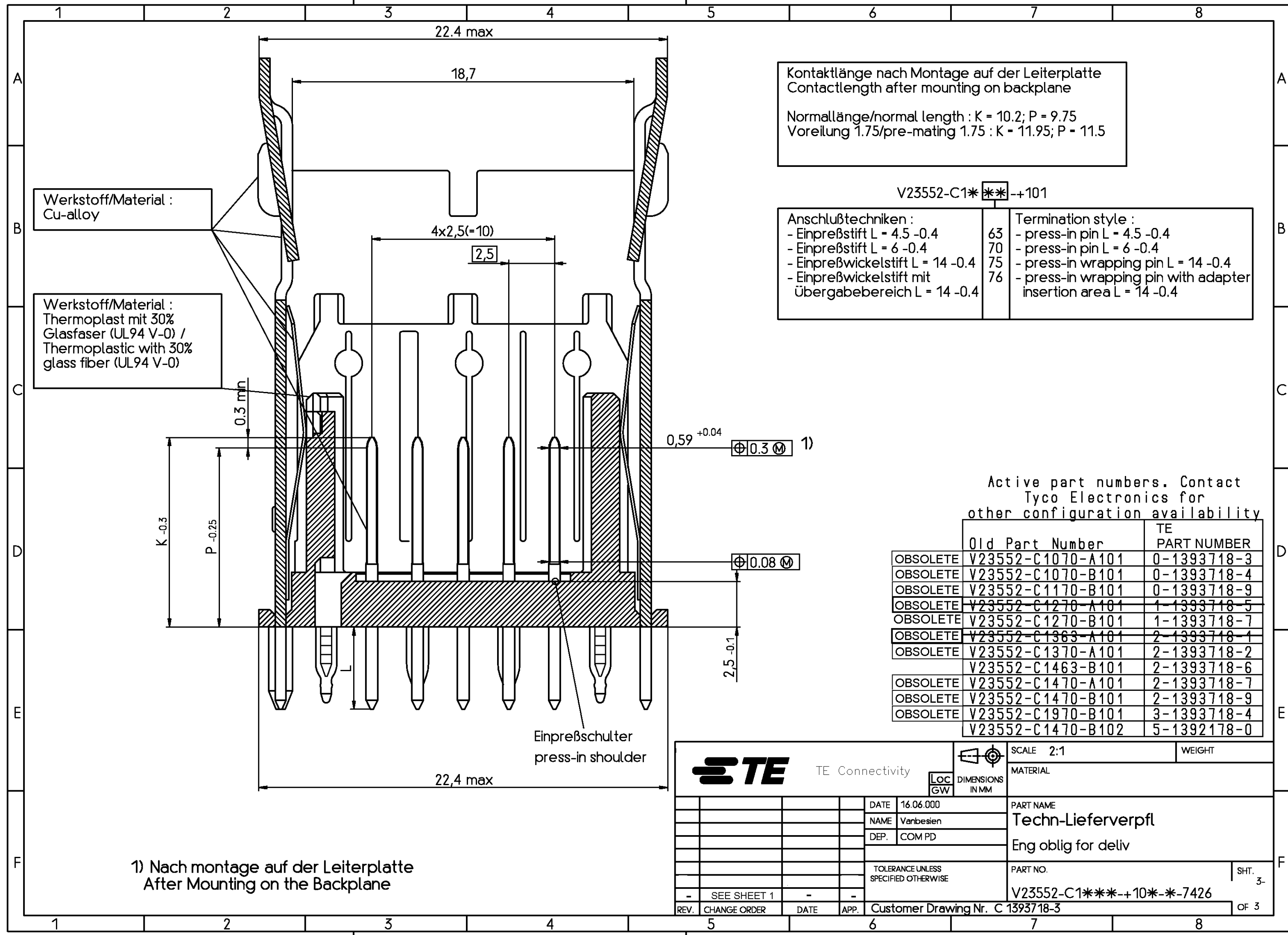
OF 3

Customer Drawing Nr. C 1393718-3



THIS INFORMATION IS CONFIDENTIAL AND PROPRIETARY TO TYCO ELECTRONICS CORPORATION AND ITS WORLDWIDE SUBSIDIARIES AND AFFILIATES. IT MAY NOT BE DISCLOSED TO ANYONE, OTHER THAN TYCO ELECTRONICS PERSONNEL, WITHOUT WRITTEN AUTHORIZATION FROM TYCO ELECTRONICS CORPORATION, HARRISBURG PENNSYLVANIA USA

PROPRIETARY:



Kontaklänge nach Montage auf der Leiterplatte  
 Contactlength after mounting on backplane  
 Normallänge/normal length : K = 10.2; P = 9.75  
 Voreilung 1.75/pre-mating 1.75 : K = 11.95; P = 11.5

V23552-C1\*\*\*+101

Anschlußtechniken :	Termination style :
- Einpreßstift L = 4.5 -0.4	63 - press-in pin L = 4.5 -0.4
- Einpreßstift L = 6 -0.4	70 - press-in pin L = 6 -0.4
- Einpreßwickelstift L = 14 -0.4	75 - press-in wrapping pin L = 14 -0.4
- Einpreßwickelstift mit Übergabebereich L = 14 -0.4	76 - press-in wrapping pin with adapter insertion area L = 14 -0.4

Active part numbers. Contact Tyco Electronics for other configuration availability

	Old Part Number	TE PART NUMBER
OBSOLETE	V23552-C1070-A101	0-1393718-3
OBSOLETE	V23552-C1070-B101	0-1393718-4
OBSOLETE	V23552-C1170-B101	0-1393718-9
OBSOLETE	V23552-C1270-A101	1-1393718-5
OBSOLETE	V23552-C1270-B101	1-1393718-7
OBSOLETE	V23552-C1363-A101	2-1393718-1
OBSOLETE	V23552-C1370-A101	2-1393718-2
	V23552-C1463-B101	2-1393718-6
OBSOLETE	V23552-C1470-A101	2-1393718-7
OBSOLETE	V23552-C1470-B101	2-1393718-9
OBSOLETE	V23552-C1970-B101	3-1393718-4
	V23552-C1470-B102	5-1392178-0

1) Nach montage auf der Leiterplatte  
 After Mounting on the Backplane

<b>TE</b> TE Connectivity		SCALE 2:1	WEIGHT
DIMENSIONS IN MM		MATERIAL	
DATE	16.06.000	PART NAME	
NAME	Vanbesien	Techn-Lieferverpfl	
DEP.	COM PD	Eng oblig for deliv	
TOLERANCE UNLESS SPECIFIED OTHERWISE		PART NO.	SHT. 3-
- SEE SHEET 1 - -		V23552-C1***+10*-*-7426	OF 3
REV.	CHANGE ORDER	DATE	APP.
			Customer Drawing Nr. C 1393718-3