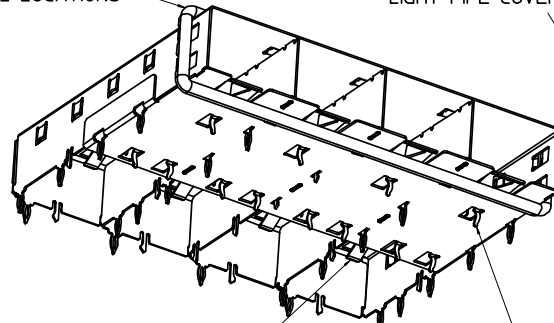


360° ELASTOMER GASKET COMPLIES WITH (SFP) MSA BOARD AND BEZEL LOCATIONS

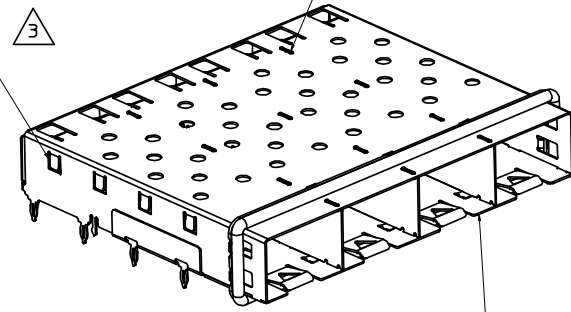
HOOKS USED WITH OPTIONAL LIGHT PIPE COVER ASSEMBLY

INNER WALL TABS ARE COINED OVER BASE AND COVER FOR RIGIDITY

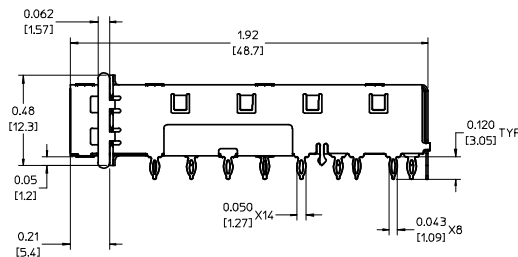


EMI FINGERS CONTACT ADAPTER

12 UNDER BELLY EMI PINS



DIMENSIONS OF EACH INNER CAGE DESIGNED TO FUNCTION WITH SMALL FORM-FACTOR PLUGGABLE (SFP) TRANSCEIVER



NOTES:

- PRESS FIT LEGS 0.120" LONG- 0.062 [1.57] MINIMUM PCB THICKNESS FOR SINGLE SIDED USE. 0.118 [3.00] MINIMUM PCB THICKNESS FOR BELLY TO BELLY USE.
- MATERIAL: COPPER ALLOY PLATING: NONE

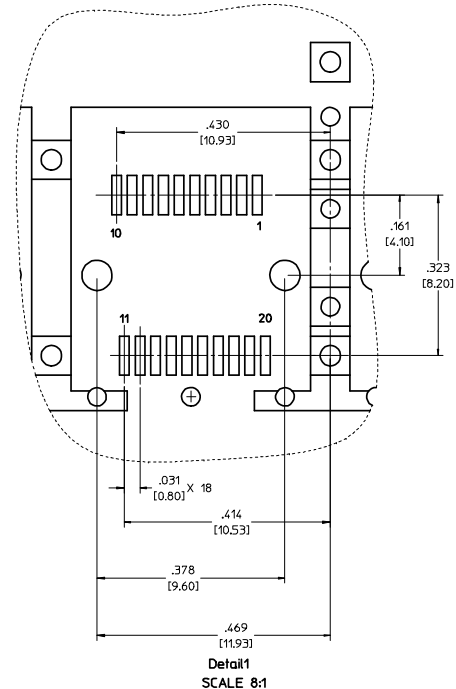
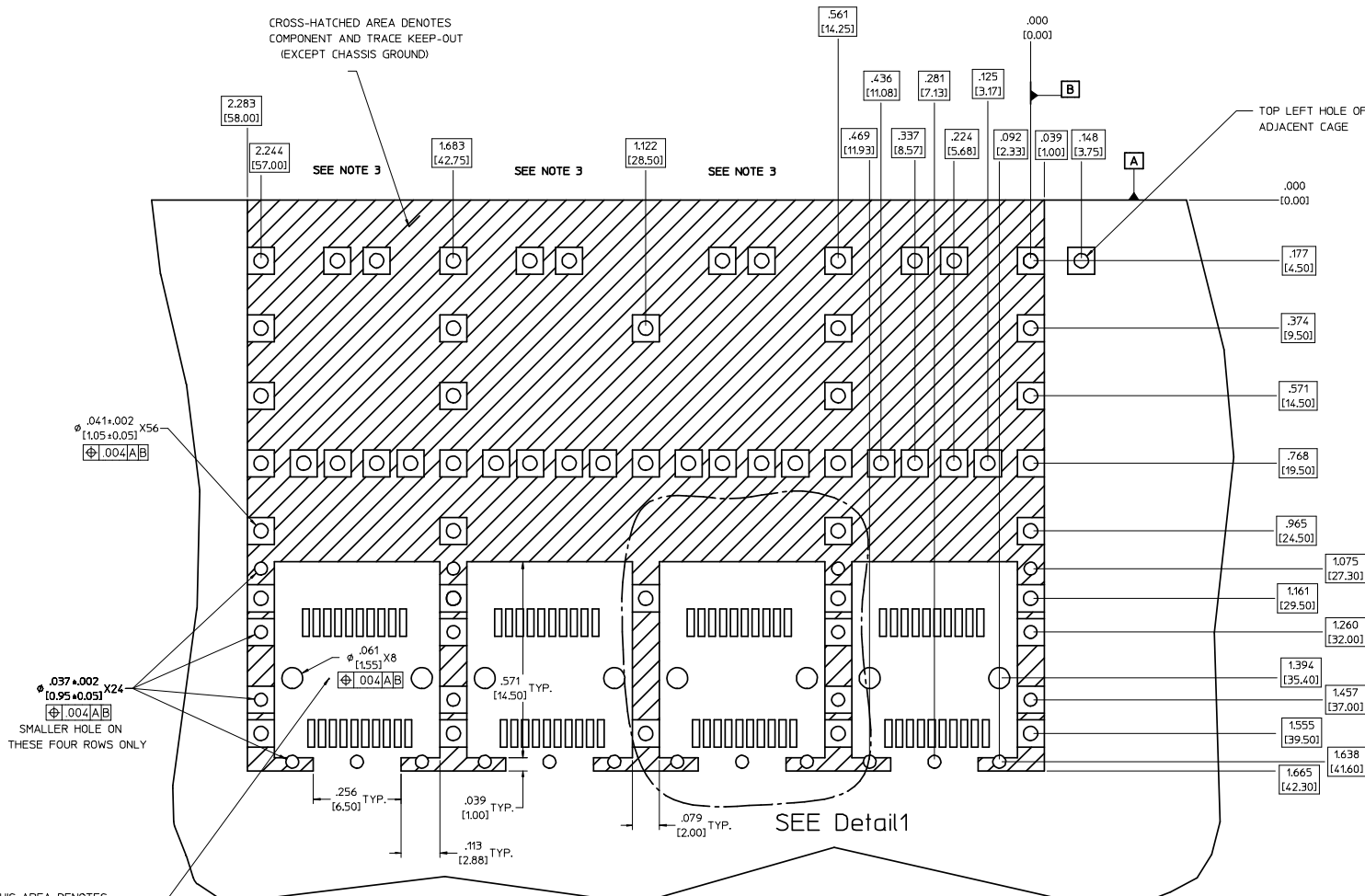
NOTE: A PRE-PLATED NICKEL VERSION IS AVAILABLE. REFER TO DOCUMENT SD-74728-420
- REFERENCE DOCUMENTS:
COSMETIC SPECIFICATIONS: WI-HP-7-2774 AND WI-HPA-7-0093
TEST SUMMARY: TS-74728-0415
- MATES WITH SERIES 74728, LIGHT PIPE COVER ASSEMBLY.
- THIS PART MEETS THE RESTRICTION OF HAZARDOUS SUBSTANCES IN ELECTRICAL AND ELECTRONIC EQUIPMENT (ROHS) DIRECTIVE (2002/95/EC).

REMOVED L TPIES EC NO: 2007/02/27 DRWN:CCOX CHKD: 2007/03/02 APPR: RMAHMOOD007/03/02	QUALITY SYMBOLS -0 -0	GENERAL TOLERANCES (UNLESS SPECIFIED)		SCALE 3:1	DESIGN UNITS METRIC	THIRD ANGLE PROJECTION	REVISE ON CAD ONLY	
		.mm INCH		DIMENSION STYLE IN/MM		TITLE		
		4 PLACES ± --- ± ---	3 PLACES ± --- ± .005	DRAWN BY CCOX	DATE 2007/02/27	1X4 SFP GANGED CAGE ASSY, W/0.062" OD GASKET SALES DRAWING		
		2 PLACES ± 0.13 ± .01	1 PLACE ± 0.25 ± ---	CHECKED BY RMAHMOOD	DATE 2007/02/27	MOLEX INCORPORATED		
ANGULAR ± 1°		DRAFT WHERE APPLICABLE MUST REMAIN WITHIN DIMENSIONS		APPROVED BY RMAHMOOD	DATE 2007/02/27	MATERIAL NO. 747280416	DOCUMENT NO. SD-74728-416	
				THIS DRAWING CONTAINS INFORMATION THAT IS PROPRIETARY TO MOLEX INCORPORATED AND SHOULD NOT BE USED WITHOUT WRITTEN PERMISSION		SHEET NO. 1 OF 5		

PCB LAYOUT FOR BELLY TO BELLY MOUNTING

CROSS-HATCHED AREA DENOTES
COMPONENT AND TRACE KEEP-OUT
(EXCEPT CHASSIS GROUND)

HOST CONNECTOR DETAIL



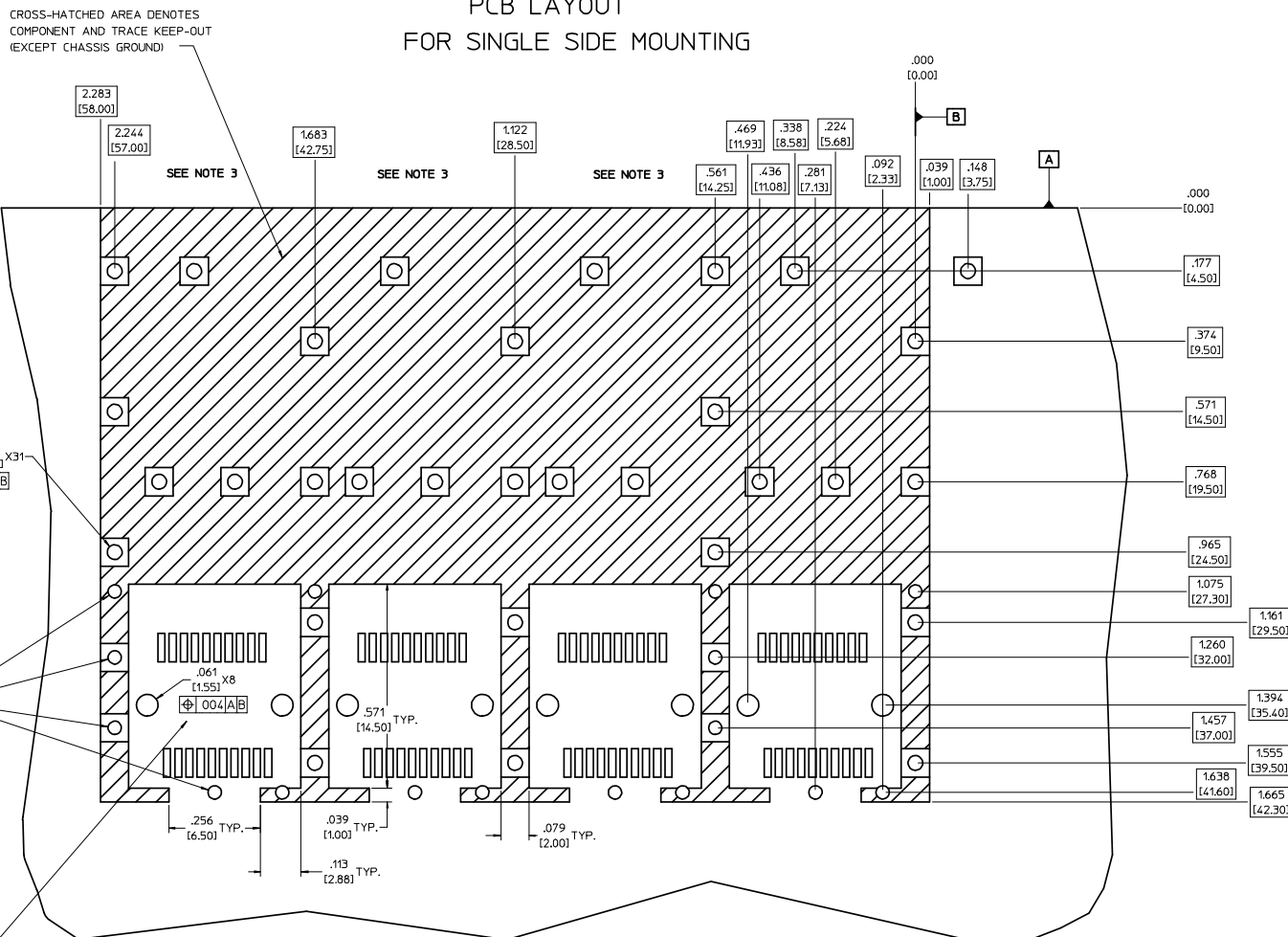
THIS AREA DENOTES
COMPONENT KEEP-OUT
(TRACES ALLOWED)

- NOTES:**
- PADS AND VIAS GO TO CHASSIS GROUND, (64 PLACES). RECOMMENDED PADS TO BE 2mm SQUARE
 - PLATING OPTIONAL FOR THROUGH HOLES, (16 PLACES).
 - RECOMMENDED PLATING INCLUDES HASL, IMMERSION (GOLD, SILVER, OR TIN), AND OSP.
 - HOLE PATTERN REPEATS FOR EACH PORT. SPACING BETWEEN PORTS IS 5.61 [14.25]

REMOVED L TYPES EC NO: DRMN/CCOX 2007/02/27 CHKD: CHKD/ 2007/03/02 APPR: RMAHMOOD/07/03/02 REV:	QUALITY SYMBOLS	GENERAL TOLERANCES (UNLESS SPECIFIED)	SCALE: 6:1	DESIGN UNITS: METRIC	THIRD ANGLE PROJECTION	REVISE ON CAD ONLY
	0 0	4 PLACES ± --- ± --- 3 PLACES ± --- ± .005 2 PLACES ± 0.13 ± .01 1 PLACE ± 0.25 ± --- ANGULAR ± 1 °	DIMENSION STYLE: IN/MM		TITLE: 1X4 SFP GANGED CAGE ASSY, W/0.062" OD GASKET SALES DRAWING	
			DRAWN BY: CCOX DATE: 2007/02/27		MATERIAL NO.: 747280416	
	DRAFT WHERE APPLICABLE MUST REMAIN WITHIN DIMENSIONS		APPROVED BY: RMAHMOOD DATE: 2007/02/27		DOCUMENT NO.: SD-74728-416	
THIS DRAWING CONTAINS INFORMATION THAT IS PROPRIETARY TO MOLEX INCORPORATED AND SHOULD NOT BE USED WITHOUT WRITTEN PERMISSION						

20 | 19 | 18 | 17 | 16 | 15 | 14 | 13 | 12 | 11 | 74728 | 9 | 8 | 7 | 6 | 5 | 4 | 3 | 2 | 1

PCB LAYOUT FOR SINGLE SIDE MOUNTING



CROSS-HATCHED AREA DENOTES
COMPONENT AND TRACE KEEP-OUT
(EXCEPT CHASSIS GROUND)

SEE NOTE 3

SEE NOTE 3

SEE NOTE 3

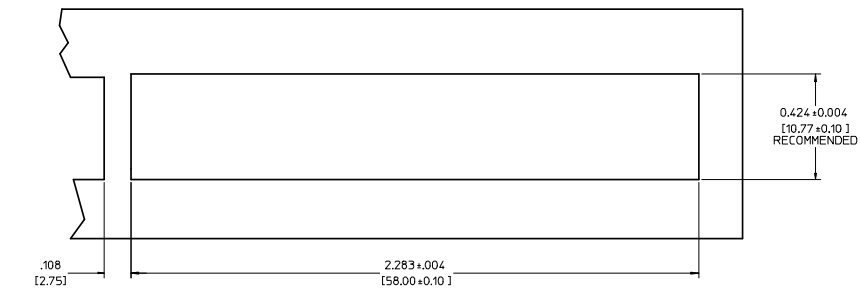
$\phi .041 \pm .002$
[1.05 ± 0.05] X31
[.004] [A] [B]

$\phi .037 \pm .002$
[0.95 ± 0.05] X16
[.004] [A] [B]
SMALLER HOLE ON
THESE FOUR ROWS ONLY

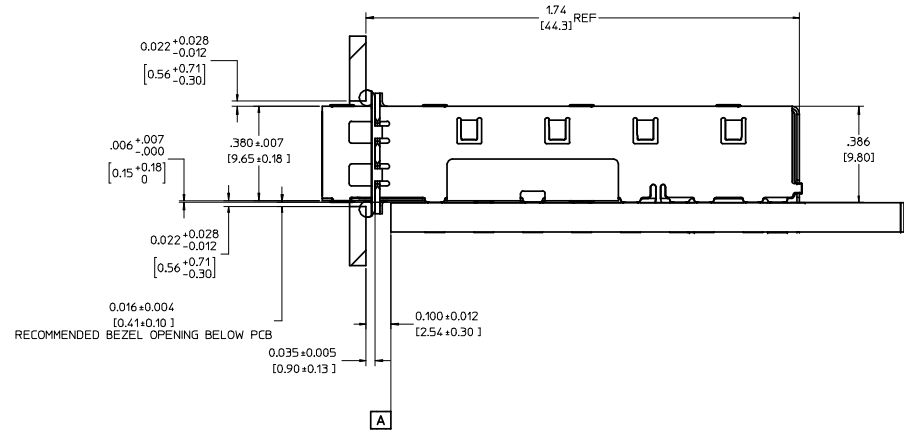
THIS AREA DENOTES
COMPONENT KEEP-OUT
(TRACES ALLOWED)

- NOTES:
1. PADS AND VIAS GO TO CHASSIS GROUND. (34 PLACES). RECOMMENDED PADS TO BE 2mm SQUARE
 2. PLATING OPTIONAL FOR THROUGH HOLES. (12 PLACES).
 3. RECOMMENDED PLATING INCLUDES HASL, IMMERSION (GOLD, SILVER, OR TIN), AND OSP.
 4. HOLE PATTERN REPEATS FOR EACH PORT, SPACING BETWEEN PORTS IS 5.61 [14.25]

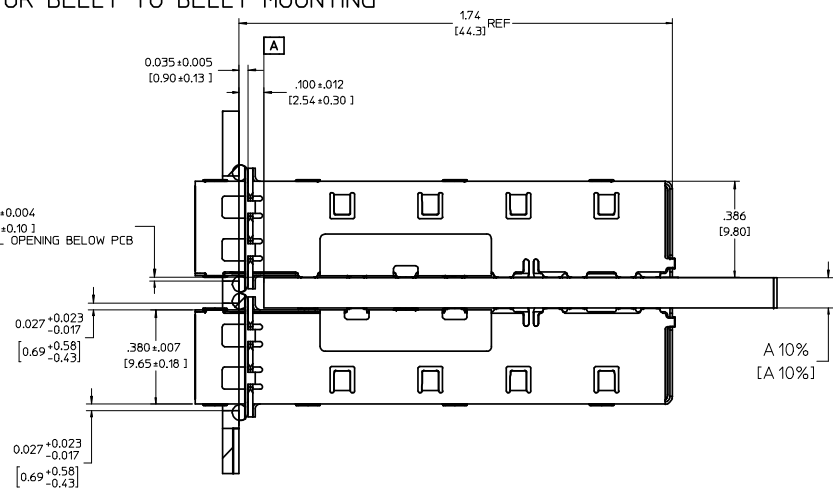
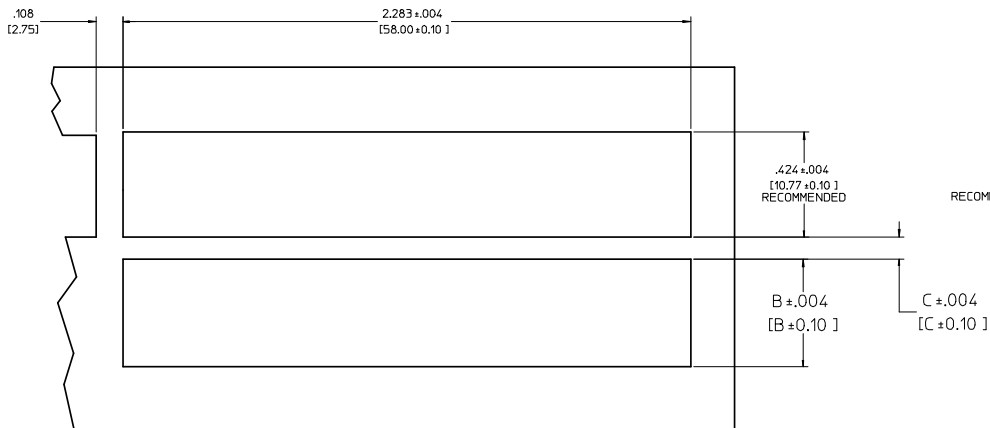
REMOVED L TPIES ELC NO: 2007/02/27 DRAWN BY: CCOX CHKD: 2007/03/02 APPR: RMAHMOOD07/03/02	QUALITY SYMBOLS	GENERAL TOLERANCES (UNLESS SPECIFIED)	SCALE: 6:1	DESIGN UNITS: METRIC	THIRD ANGLE PROJECTION	REVISE ON CAD ONLY	
	DIMENSION STYLE: IN/MM DIMENSIONS: 4 PLACES ± --- ± --- 3 PLACES ± --- ± .005 2 PLACES ± 0.13 ± .01 1 PLACE ± 0.25 ± --- ANGULAR ± 1 °	DRAFT WHERE APPLICABLE MUST REMAIN WITHIN DIMENSIONS	DRAWN BY: CCOX	DATE: 2007/02/27	TITLE: 1X4 SFP GANGED CAGE ASSY, W/0.062" OD GASKET SALES DRAWING		
		APPROVED BY: RMAHMOOD DATE: 2007/02/27	CHECKED BY: RMAHMOOD DATE: 2007/02/27			MATERIAL NO.: 747280416 DOCUMENT NO.: SD-74728-416	
			THIS DRAWING CONTAINS INFORMATION THAT IS PROPRIETARY TO MOLEX INCORPORATED AND SHOULD NOT BE USED WITHOUT WRITTEN PERMISSION			MOLEX INCORPORATED SHEET NO. 3 OF 5	



BEZEL AND BOARD POSITION DIMENSIONS FOR SINGLE SIDE MOUNTING



BEZEL AND BOARD POSITION DIMENSIONS FOR BELLY TO BELLY MOUNTING



NOTE: FOR A GIVEN BOARD THICKNESS (A), DIMENSIONS (B) AND (C) ARE DIRECTLY AFFECTED.

USE RECOMMENDED DIMENSIONS AND TOLERANCES TO AID IN DEVELOPING BEZEL OPENING.

FOR EXAMPLE USING A BOARD THICKNESS OF 0.125" THE RECOMMENDED VALUES WOULD BE:

- A= .125/3.18 ±10%
- B= .434/11.03 ±.004
- C= .088/2.23 ±.004

REMOVED L TPIPES	EC NO: DRMN:CCOX 2007/02/27	QUALITY SYMBOLS ▽=0 ▽=0	GENERAL TOLERANCES (UNLESS SPECIFIED)		SCALE 4:1	DESIGN UNITS METRIC	THIRD ANGLE PROJECTION	REVISE ON CAD ONLY		
	CHKD: RMAHMOOD007/03/02		APPR: RMAHMOOD007/03/02	mm	INCH	DIMENSION STYLE IN/MM		TITLE		
	DESCRIPTION		4 PLACES ± --- ± ---	3 PLACES ± --- ± .005	2 PLACES ± 0.13 ± .01	1 PLACE ± 0.25 ± ---	DRAWN BY CCOX	DATE 2007/02/27	1X4 SFP GANGED CAGE ASSY, W/0.062" OD GASKET SALES DRAWING	
			ANGULAR ± 1 °		CHECKED BY RMAHMOOD		DATE 2007/02/27	MATERIAL NO. MOLEX INCORPORATED		
DRAFT WHERE APPLICABLE MUST REMAIN WITHIN DIMENSIONS			APPROVED BY RMAHMOOD		DATE 2007/02/27	DOCUMENT NO. 747280416		SHEET NO. 4 OF 5		
THIS DRAWING CONTAINS INFORMATION THAT IS PROPRIETARY TO MOLEX INCORPORATED AND SHOULD NOT BE USED WITHOUT WRITTEN PERMISSION										

DATE	REV	CHANGES
2007/02/07	A	INITIAL RELEASE
2007/02/27	B	1. Removed light pipes and light pipe covers from sht 1 & 4.; 2. Changed EMI gasket OD from 0.7478mm to 0.7874mm.; 3. Deleted note referencing Product Specification PS-74728-000 in 'Reference Documents' note.

REMOVED L PIPES	EC NO: 2007/02/27	QUALITY SYMBOLS	GENERAL TOLERANCES (UNLESS SPECIFIED)		SCALE 1:1	DESIGN UNITS METRIC	THIRD ANGLE PROJECTION	REVISE ON CAD ONLY
	DRWN:CCOX		2007/03/02	.mm	.INCH	DIMENSION STYLE IN/MM		
	CHKD: 2007/03/02		APP: RMAHMOOD	4 PLACES ± --- ± ---	3 PLACES ± --- ±.005	DRAWN BY CCOX	DATE 2007/02/27	TITLE 1X4 SFP GANGED CAGE ASSY, W/0.062" OD GASKET SALES DRAWING
	2 PLACES ± 0.13 ±.01		1 PLACE ± 0.25 ± ---	CHECKED BY RMAHMOOD	DATE 2007/02/27	MATERIAL NO. 747280416	DOCUMENT NO. SD-74728-416	SHEET NO. 5 OF 5
		▽ = 0	ANGULAR ± 1 °		APPROVED BY RMAHMOOD		DATE 2007/02/27	
		▽ = 0	DRAFT WHERE APPLICABLE MUST REMAIN WITHIN DIMENSIONS		THIS DRAWING CONTAINS INFORMATION THAT IS PROPRIETARY TO MOLEX INCORPORATED AND SHOULD NOT BE USED WITHOUT WRITTEN PERMISSION			