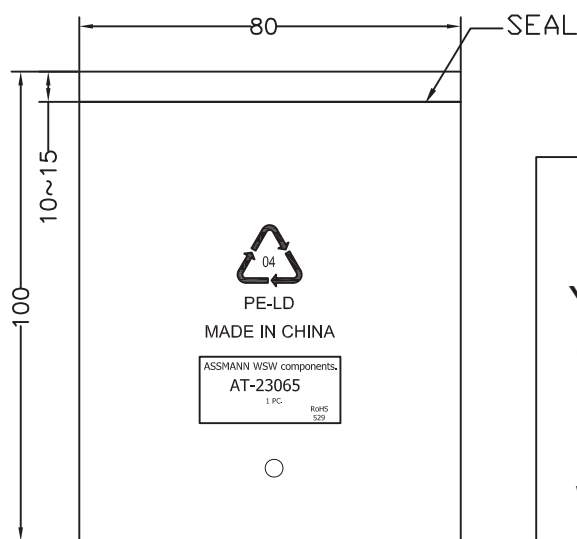


P1

P2



1PCS/PE BAG

Pin Assignment

P1	P2
Blue	1
Yellow	2
Green	3
Red	4
Black	5
White	6

Material:

- Cable: (6)UL 26AWG L=60mm (Blue, Yellow, Green, Red, Black, White)
- P1 connector: DB 9P Female, Black insulation
- P2 connector: RJ12 6P6C jack pin 3μ"
- Adapter: DB9PF/RJ12 Beige
- Terminal: (6)DB 9P Female TER G/F
- Screw: (2)Thumbscrew 4*37mm

Unit: mm



Scale	Free				Date	Name	
TOLERANCE					Drawn	13.03.15	Wilson
X.	±0.3				Approved	13.03.15	Groll
X.X	±X						
X.XX	±X						
DIM	TOL						
X.°	±X°						
X.X°	±X°						
Angle	TOL	Id.	Modification	Date	Name	1840 W. Drake Drive, Suite 101 • Tempe, AZ 85283 Toll Free: 1-877-277-6266 • Email: info@assmann.us	

Title	
DSub Modular Adapter	
9 pin Female ↔ RJ12 Female, Beige	
ASSMANN WSW-No.	
AT-23065	
Drawing-No.	rev00
Replace	Sheet 1/1

1

2

3

4

5

6

7