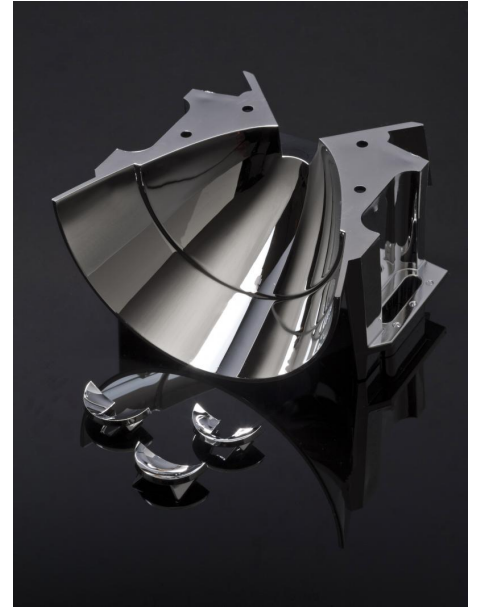


DETAILS

Product Number	C13898_BLONDIE-A
Family	Blondie
Type	Reflector
Color	metal
Diameter	92x78,3 mm
Height	45 mm
Style	
Optic Material	PC
Holder Material	
Fastening	screw
Status	production ready
ROHS Compliant	Yes
Date Updated	7/11/2014



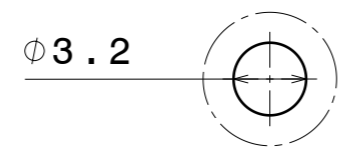
OPTICAL PROPERTIES

LED	Viewing	Light	Effi-	cd/lm	Connector
	Angle	Beam	ciency		
XP-G2	Decorative deg	Decorative...	-	-	-
XP-G	Decorative deg	Decorative...	-	-	-
XP-E2	Decorative deg	Decorative...	-	-	-
XM-L2	Decorative deg	Decorative...	-	-	-
LUXEON M/MX	Decorative deg	Decorative...	-	-	-
LUXEON A	Decorative deg	Decorative...	-	-	-
LUXEON Rebel	Decorative deg	Decorative...	-	-	-
LUXEON MZ	Decorative deg	Decorative...	-	-	-
NVSxx19B/NVSxx19C	Decorative deg	Decorative...	-	-	-
Oslon Square EC	Decorative deg	Decorative...	-	-	-

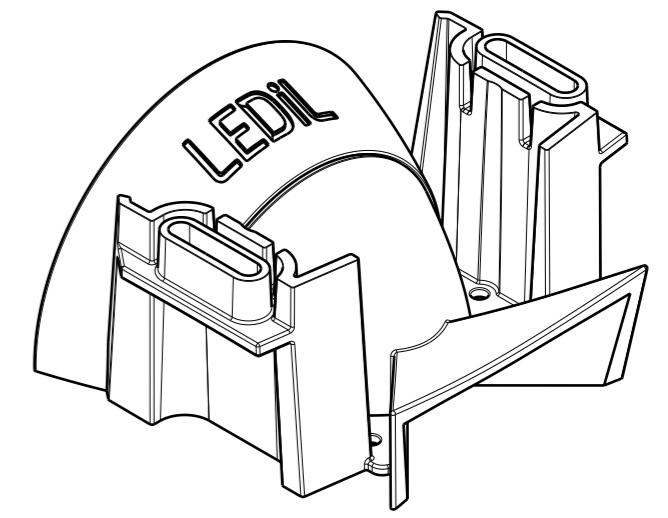
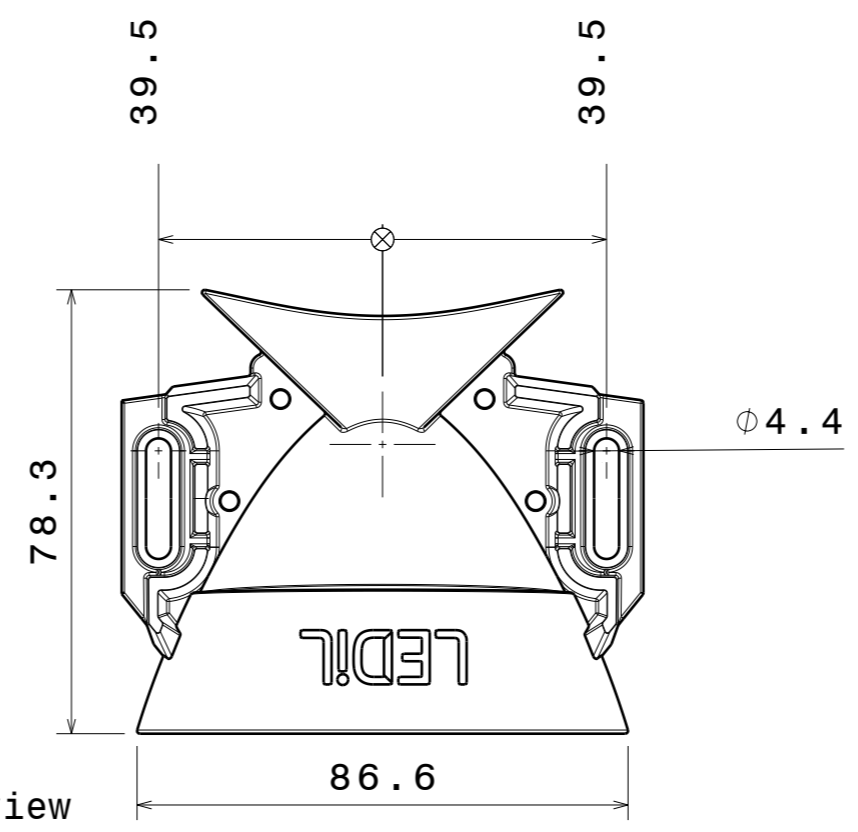
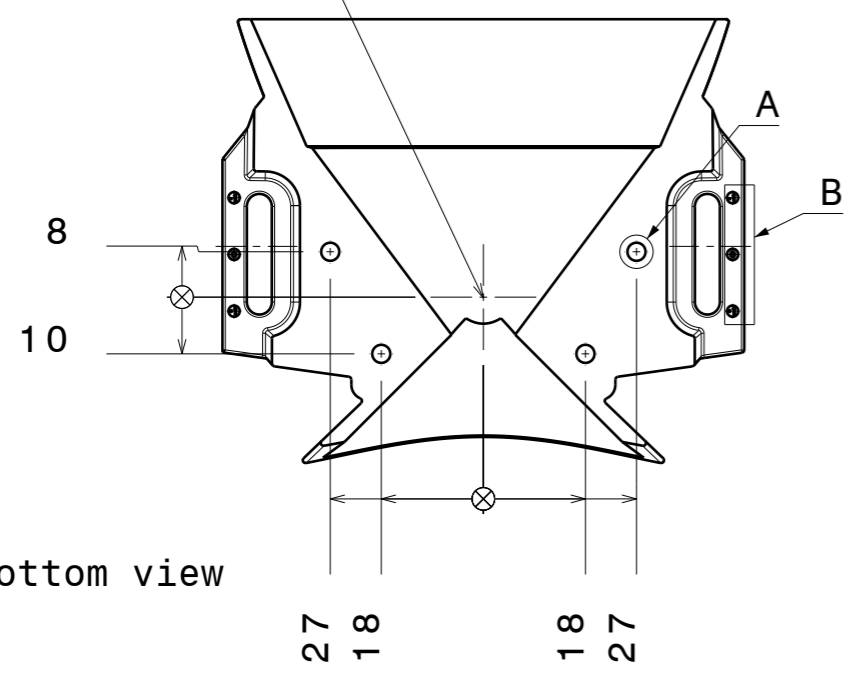
H G F E D C B A

4

4

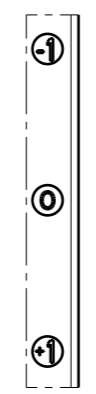
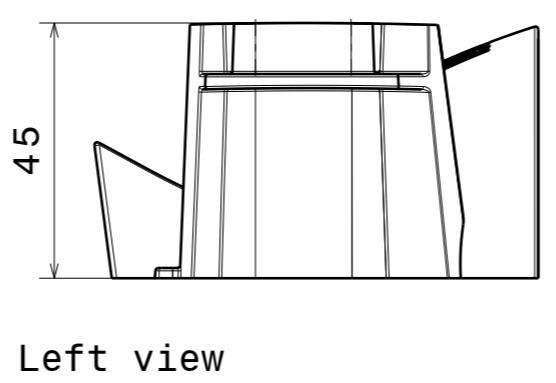
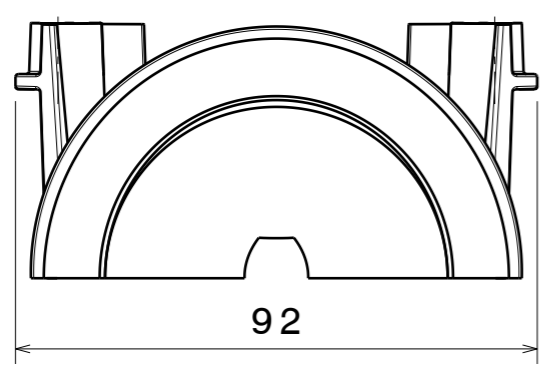


LED Center



3

3



Variable tilt degrees for mounting


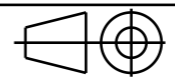
2

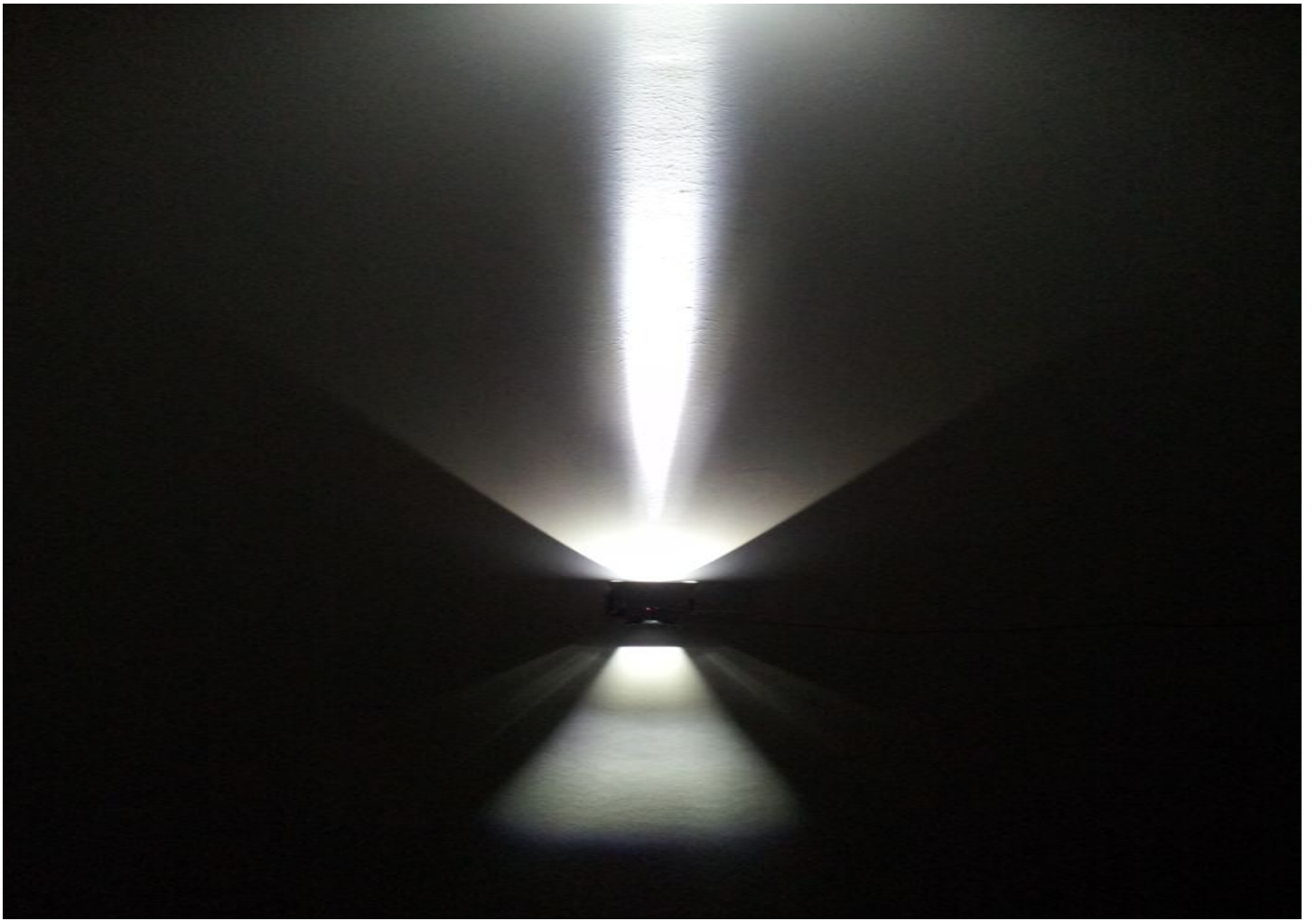
2

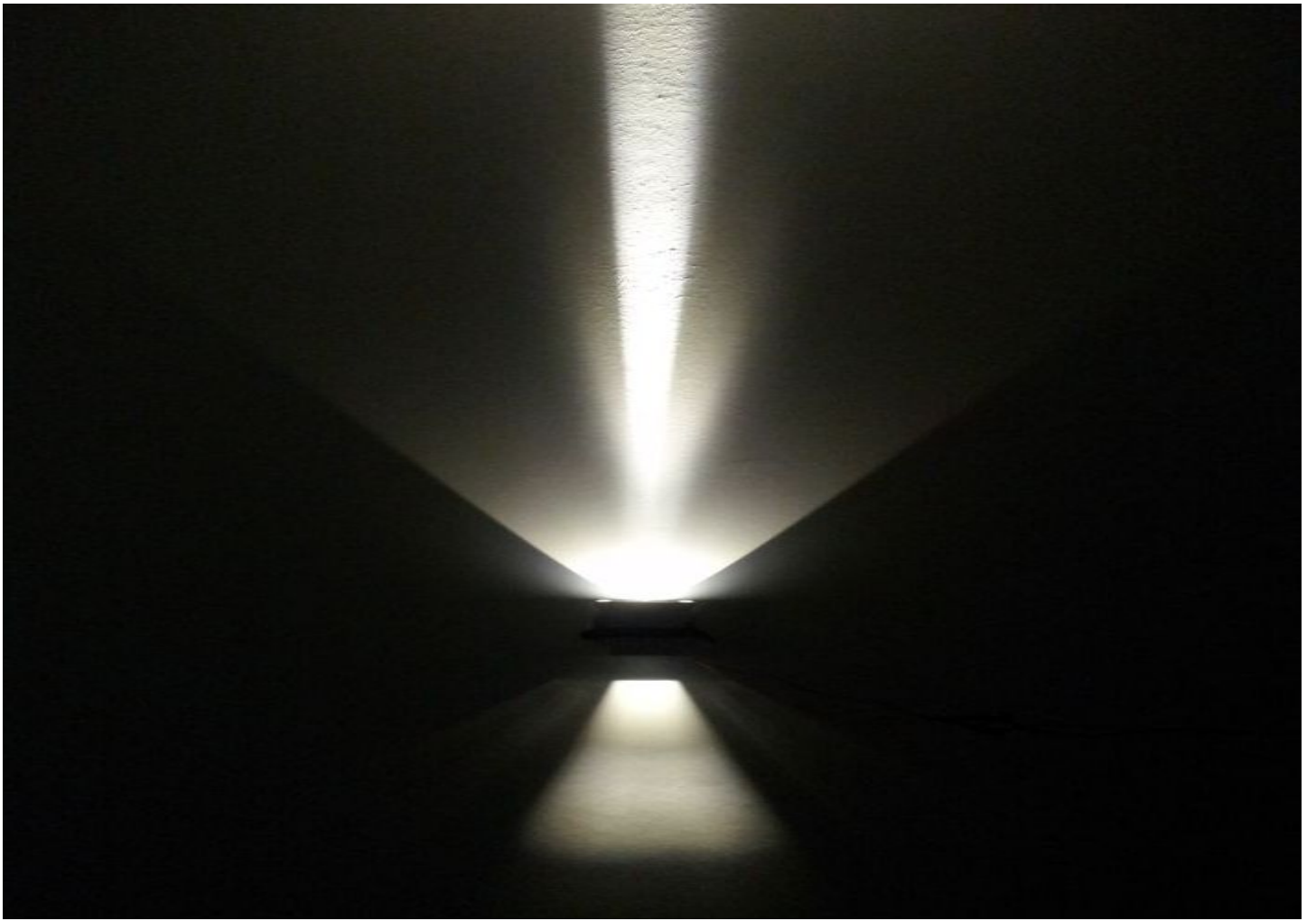
1

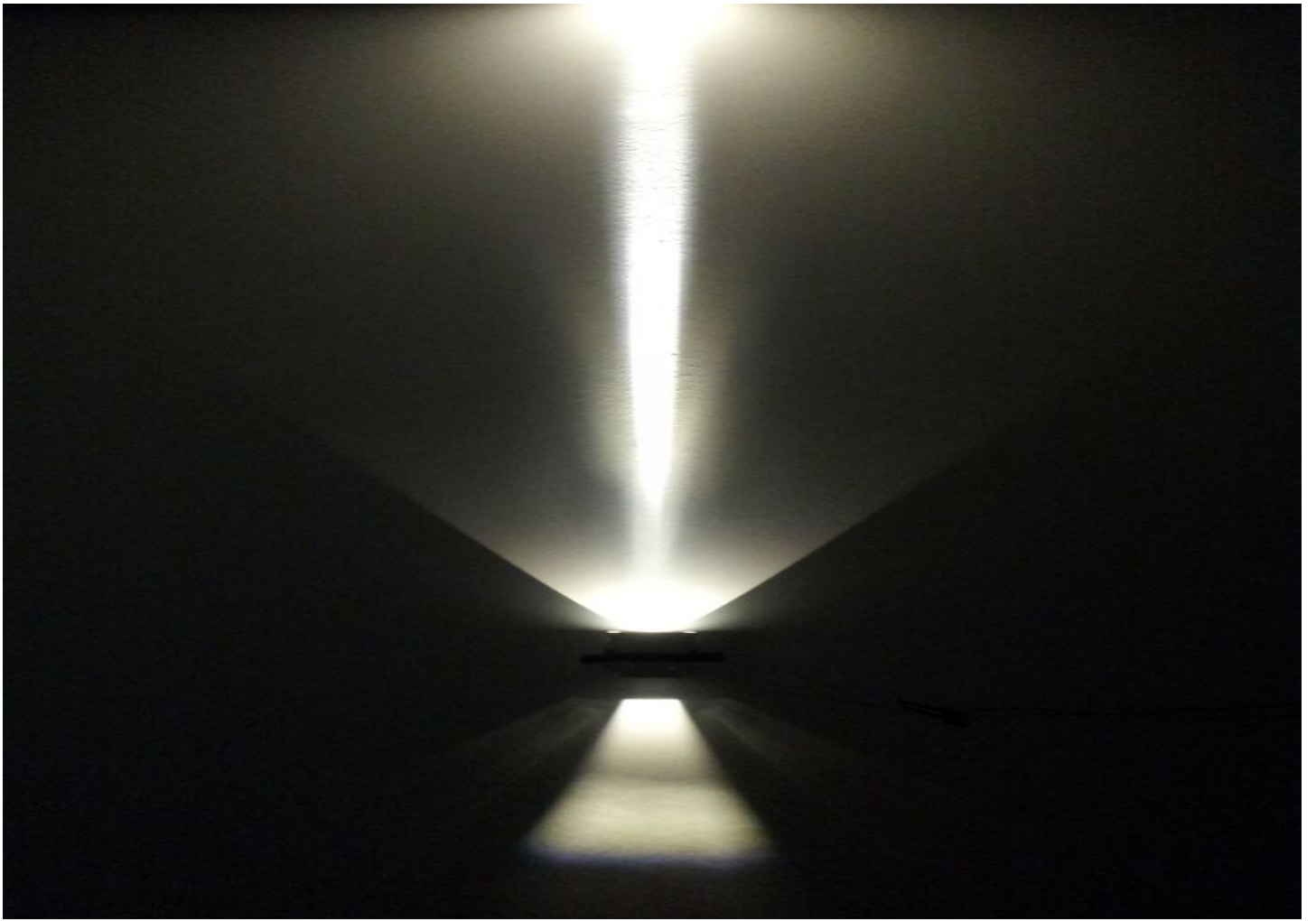
1

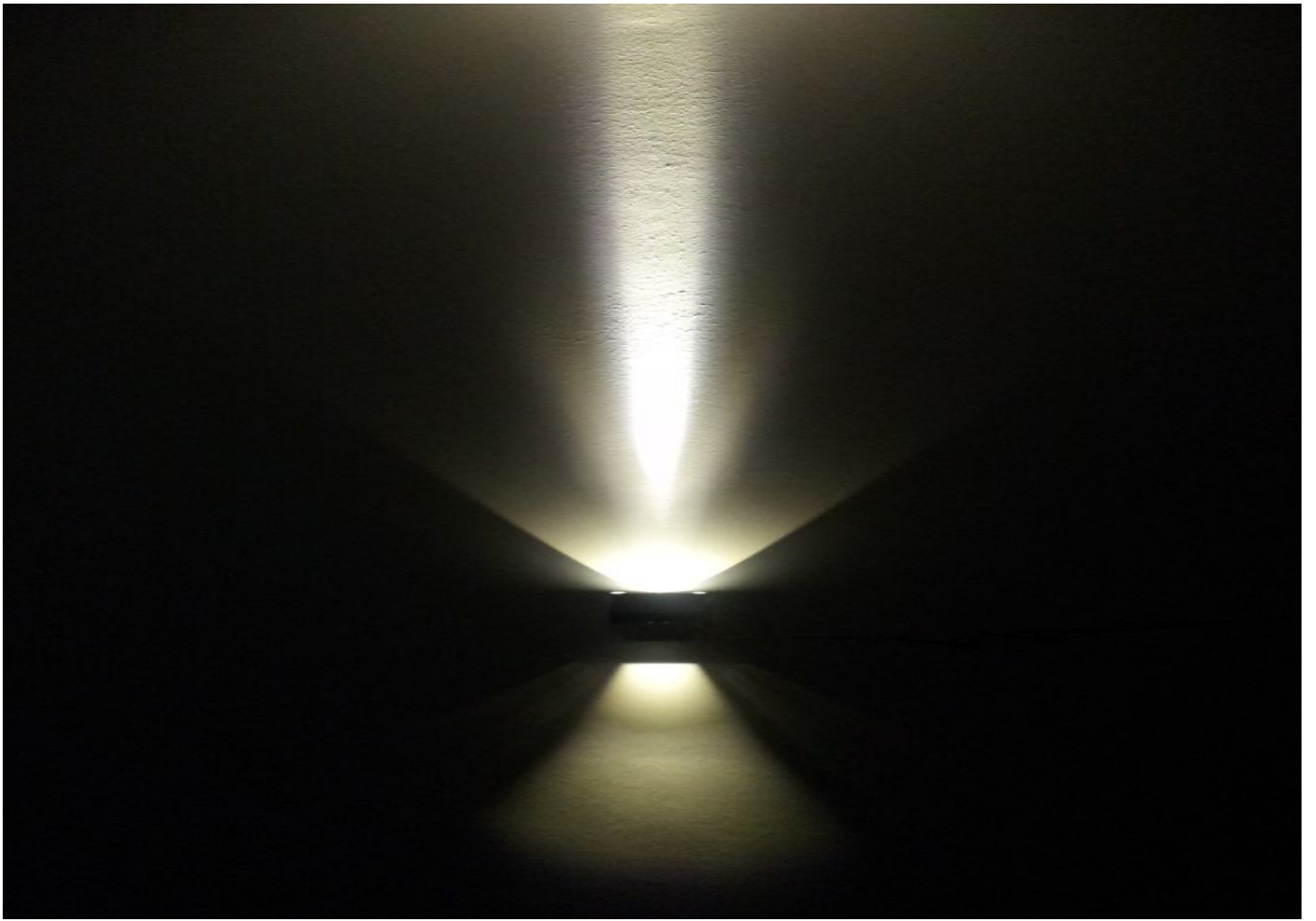
H G F E D C B A

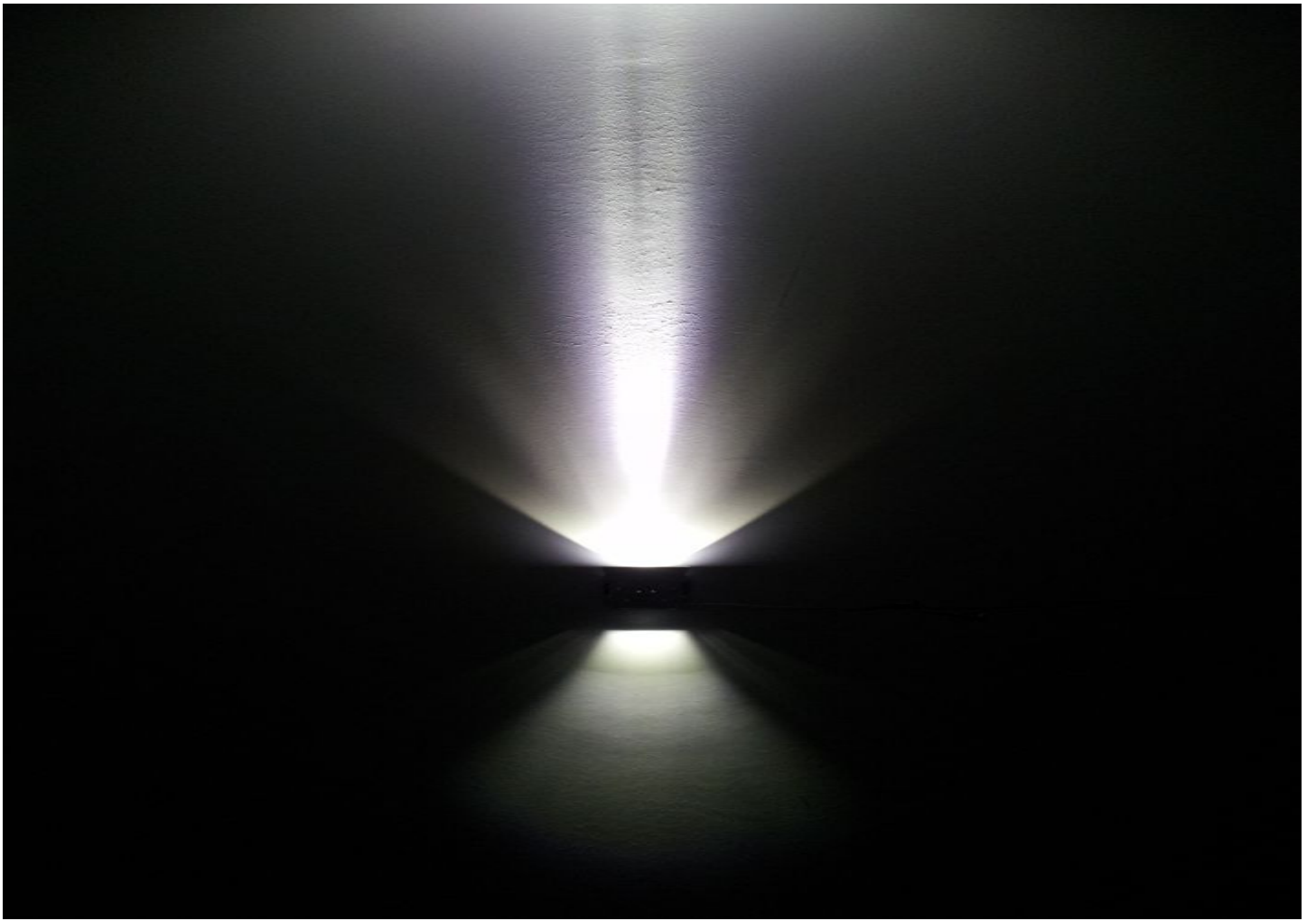
<p>Tolerances if not otherwise shown According to DIN ISO 2768-1 Linear measures: Up to 30mm class M, otherwise class C. According to DIN ISO 2768-2 Form and position: class L</p>		 <p>Ledil Oy Salorankatu 10 FIN 24240 SALO Finland</p>	
<p>THIRD ANGLE PROJECTION: </p>		<p>DRAWING TITLE BLONDIE-A Datasheet</p>	
<p>This drawing is the property of LEDiL Oy. It may not be reproduced, copied or communicated without a written agreement with LEDiL Oy."</p>		<p>SIZE A3</p>	<p>PART NUMBER C13898 BLONDIE-A</p>
<p>SCALE 3:4</p>		<p>WEIGHT -</p>	<p>SHEET 1/1</p>

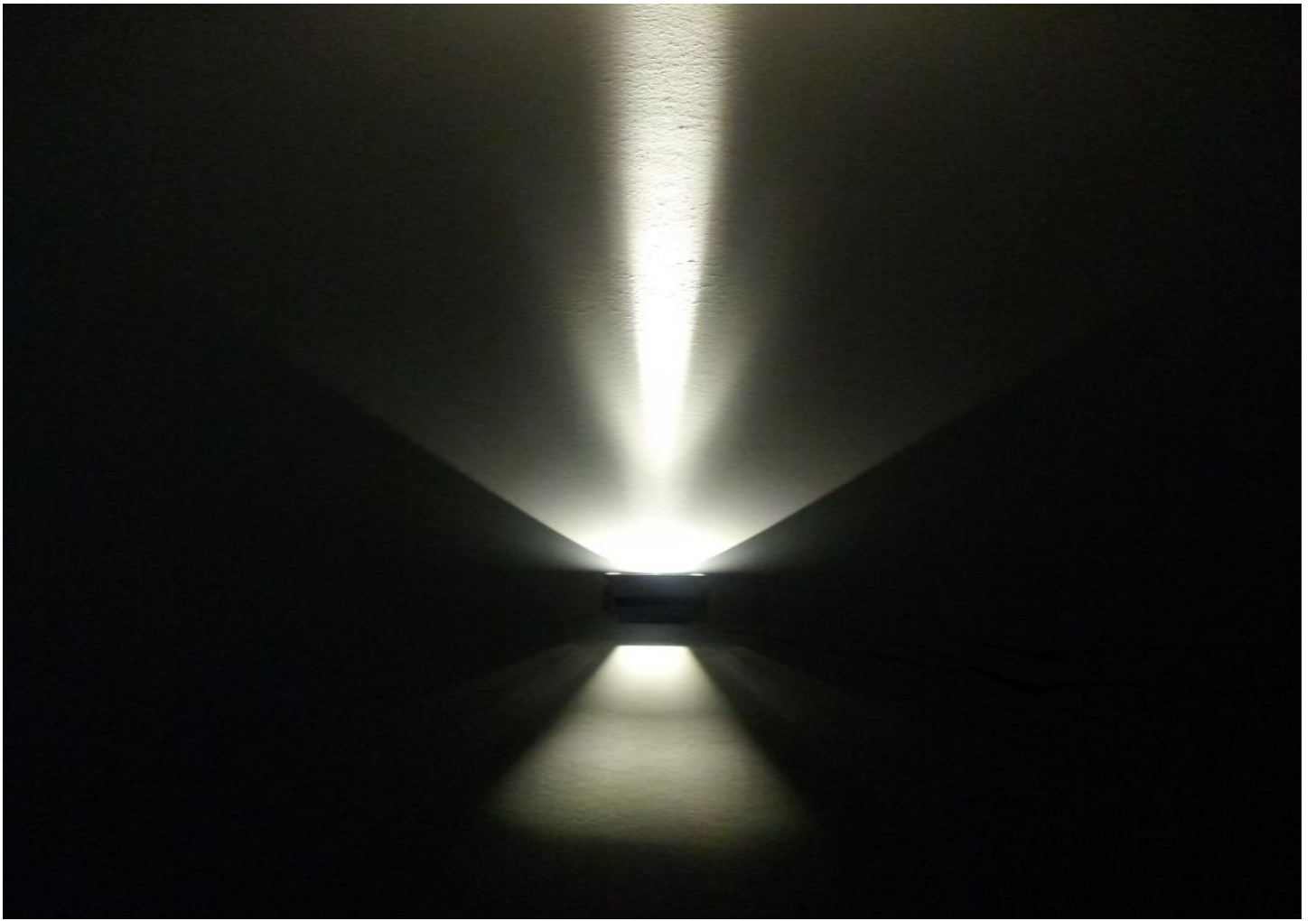


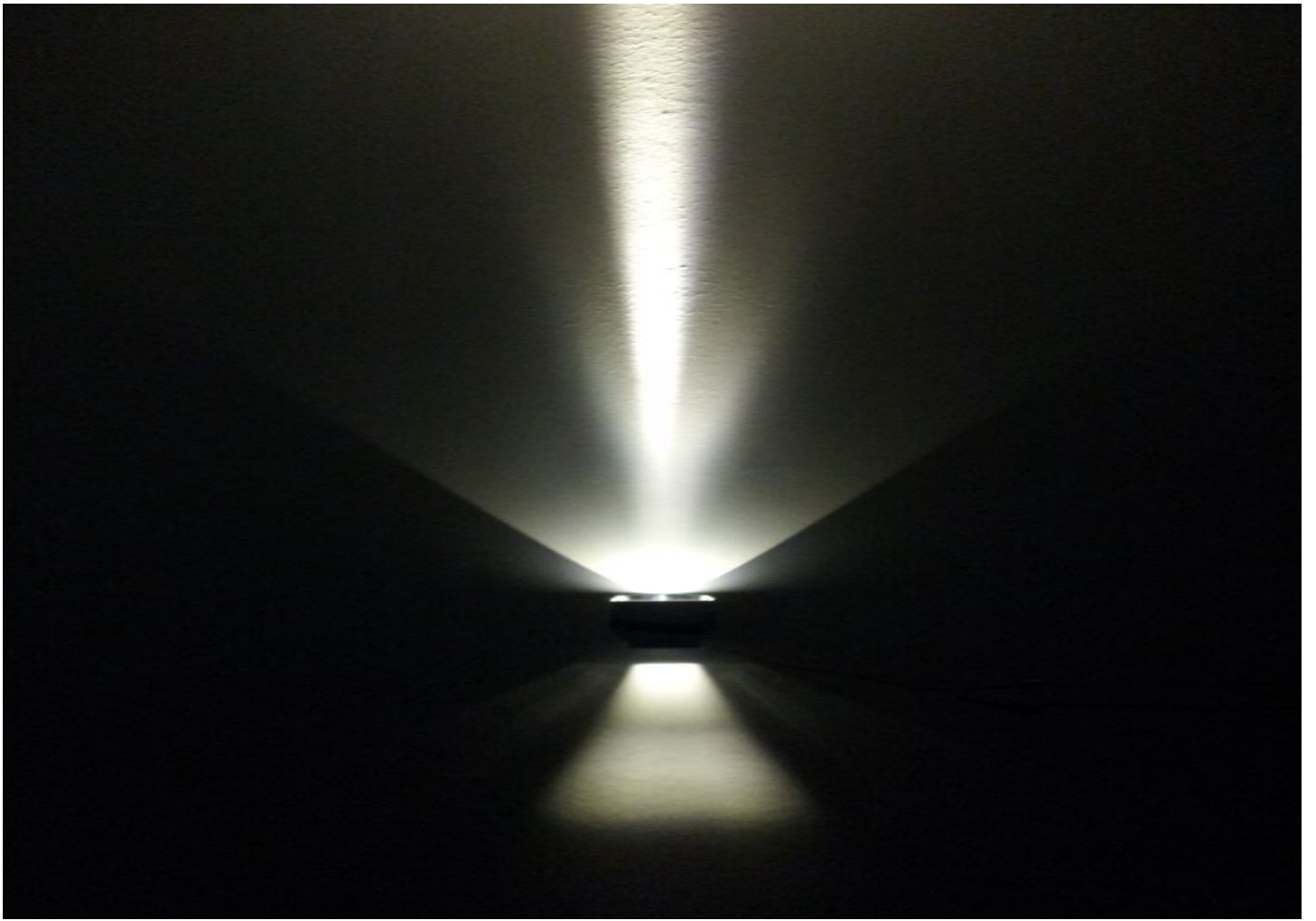


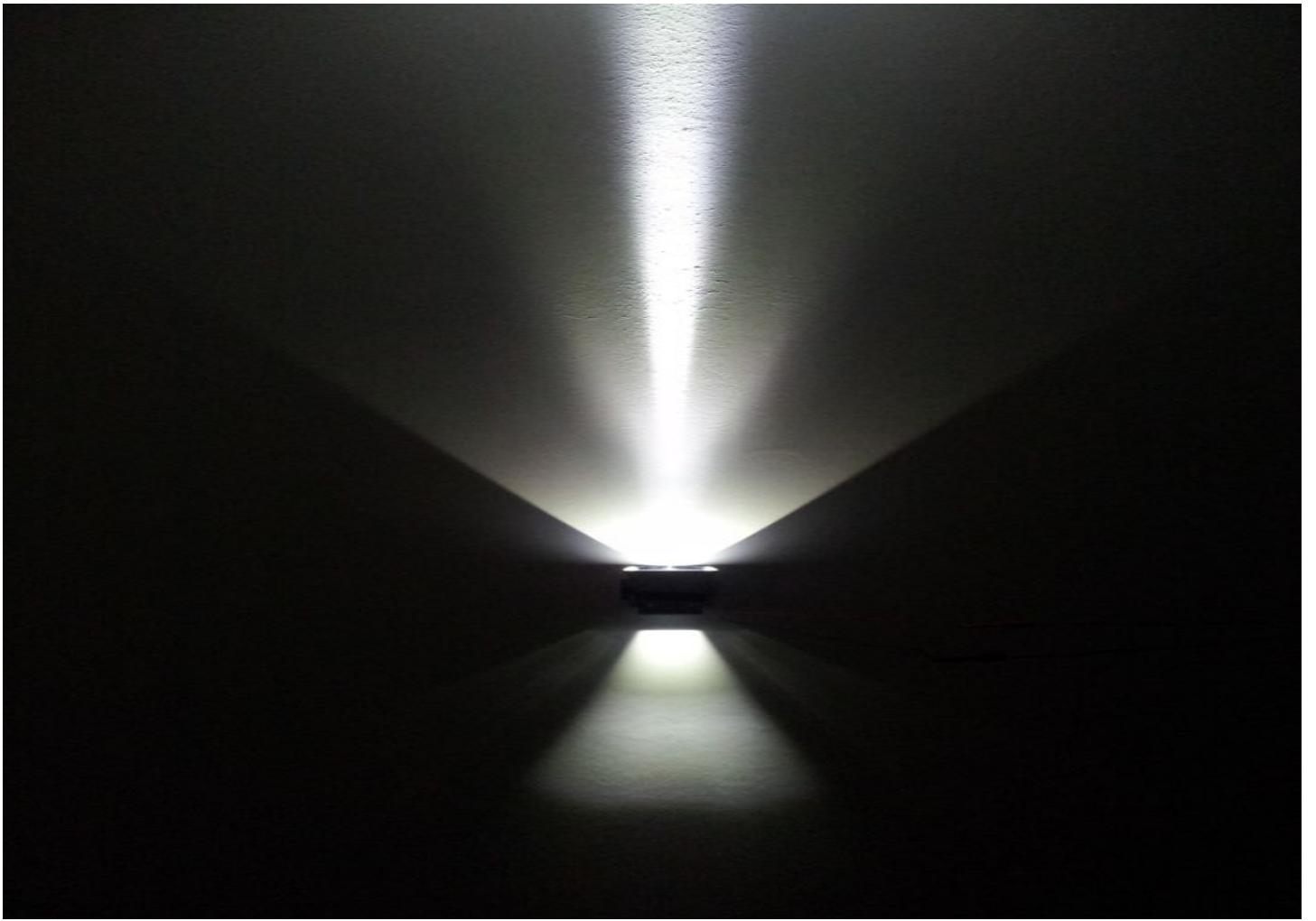


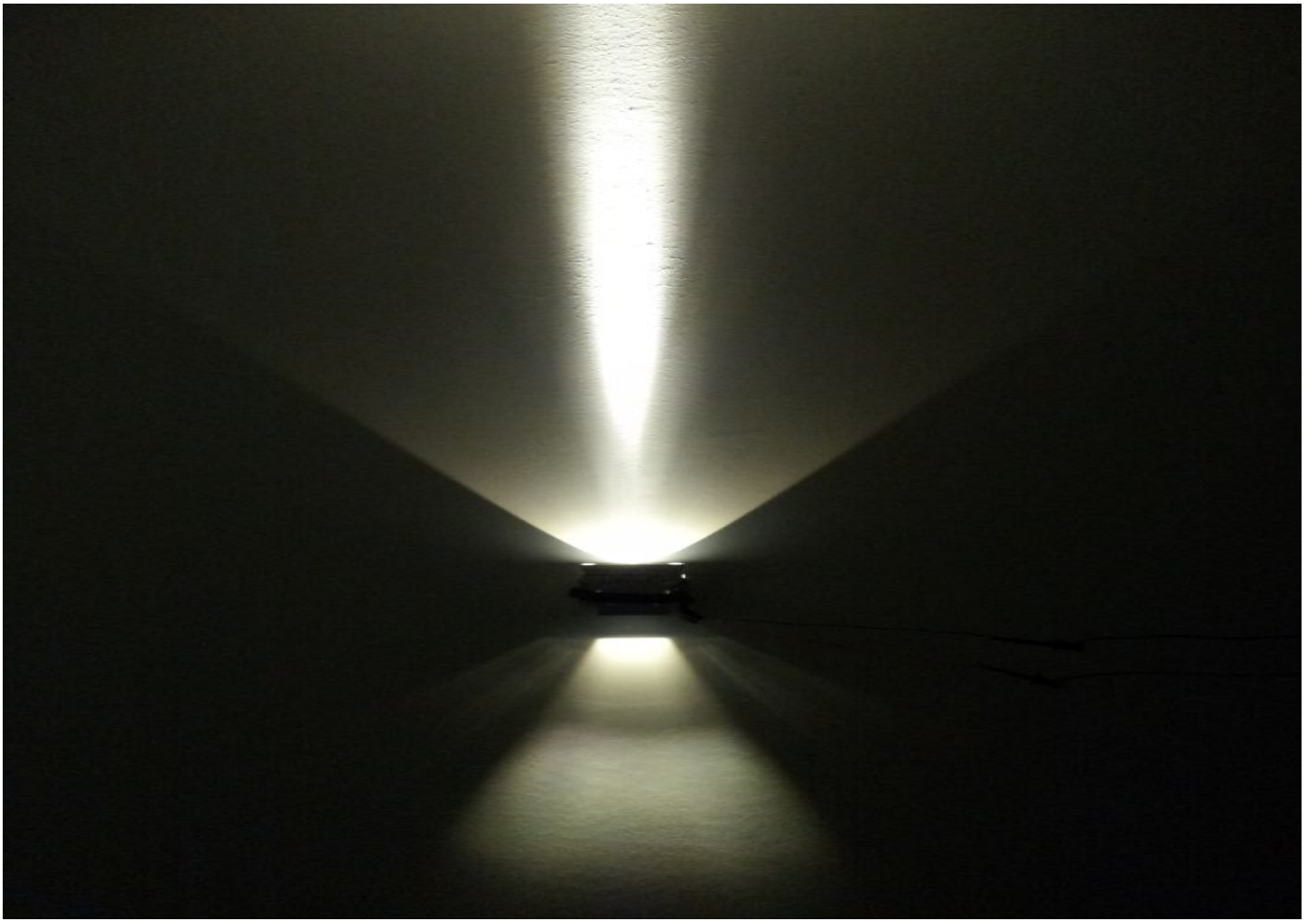


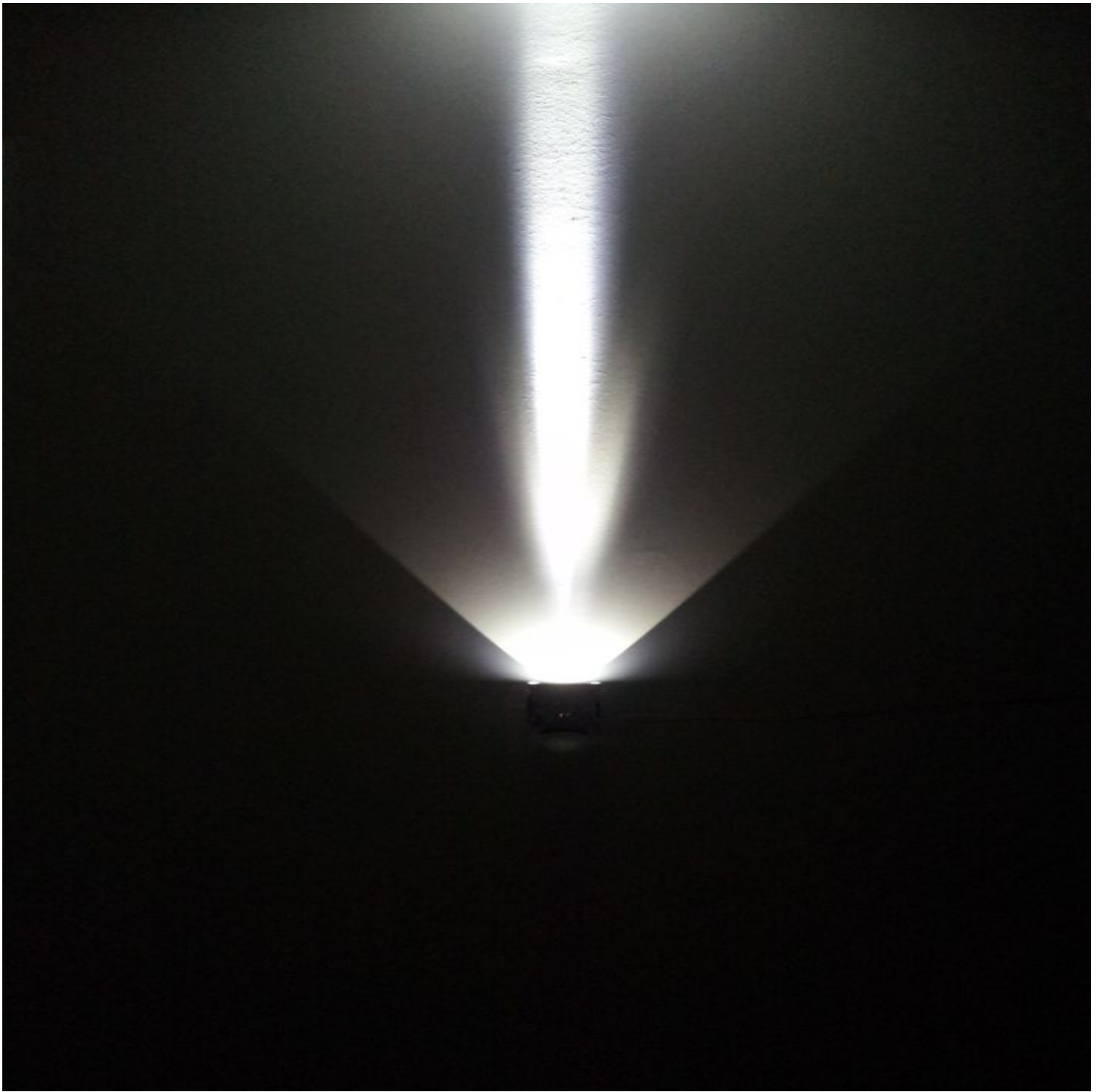


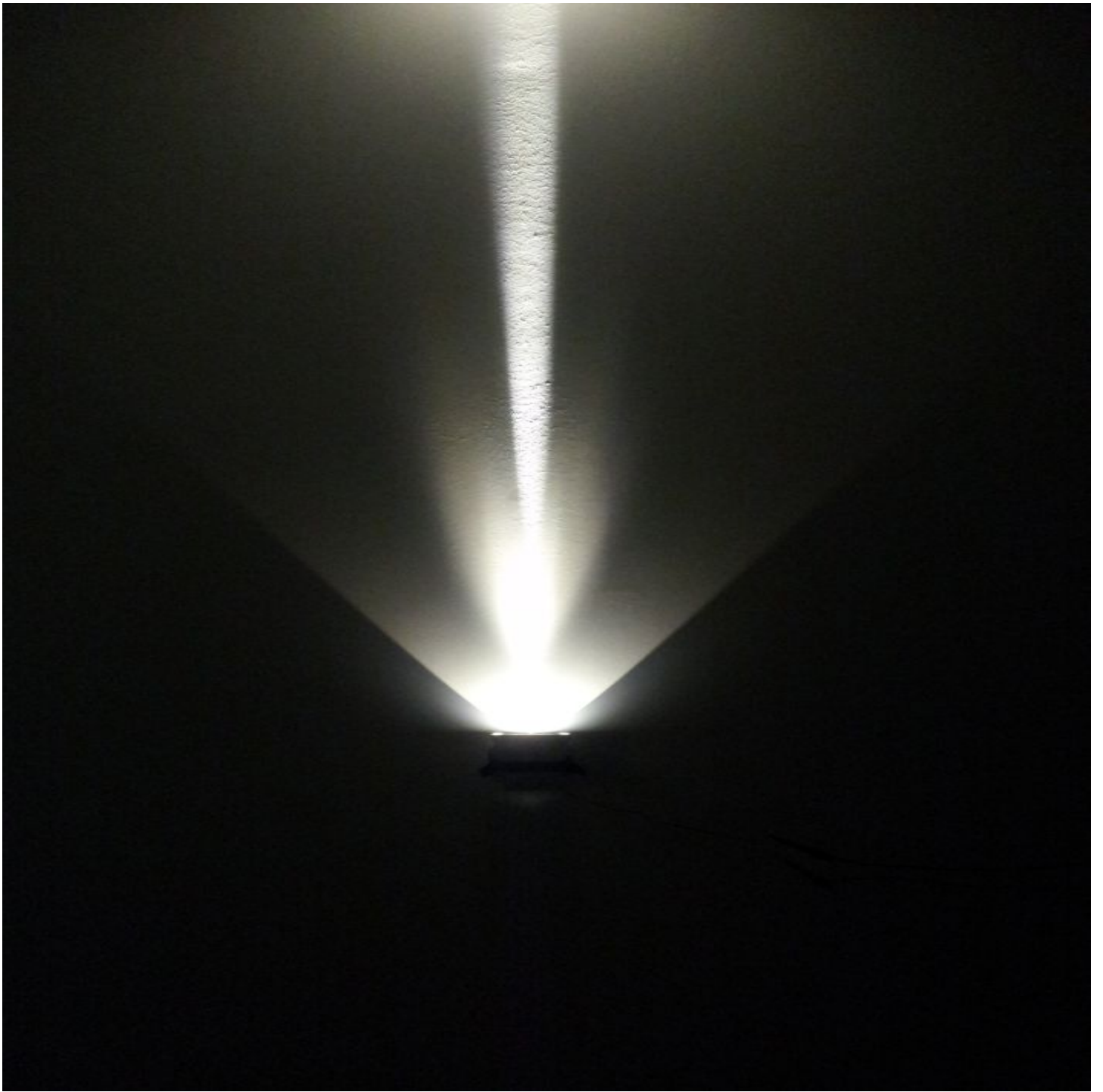


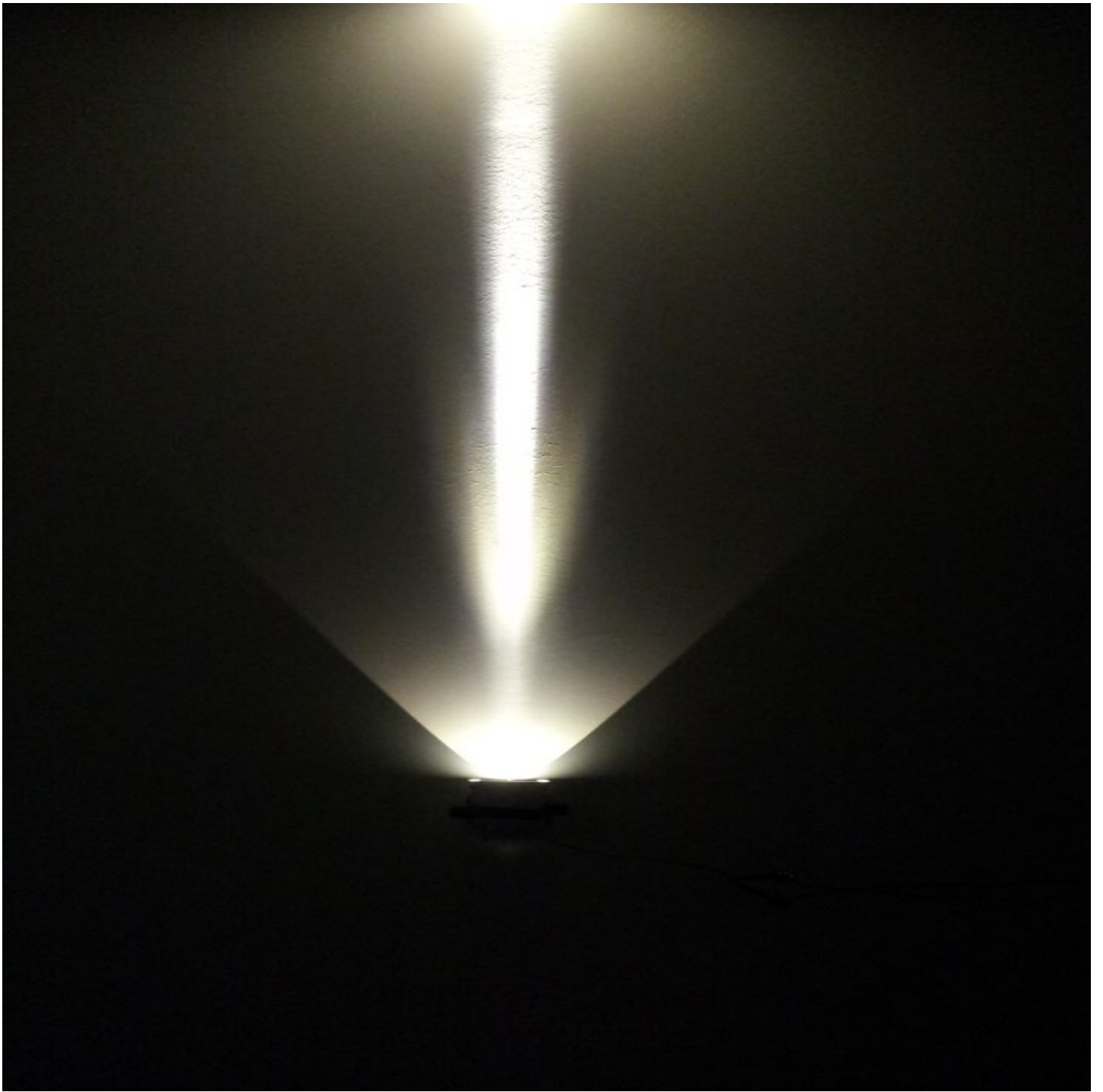


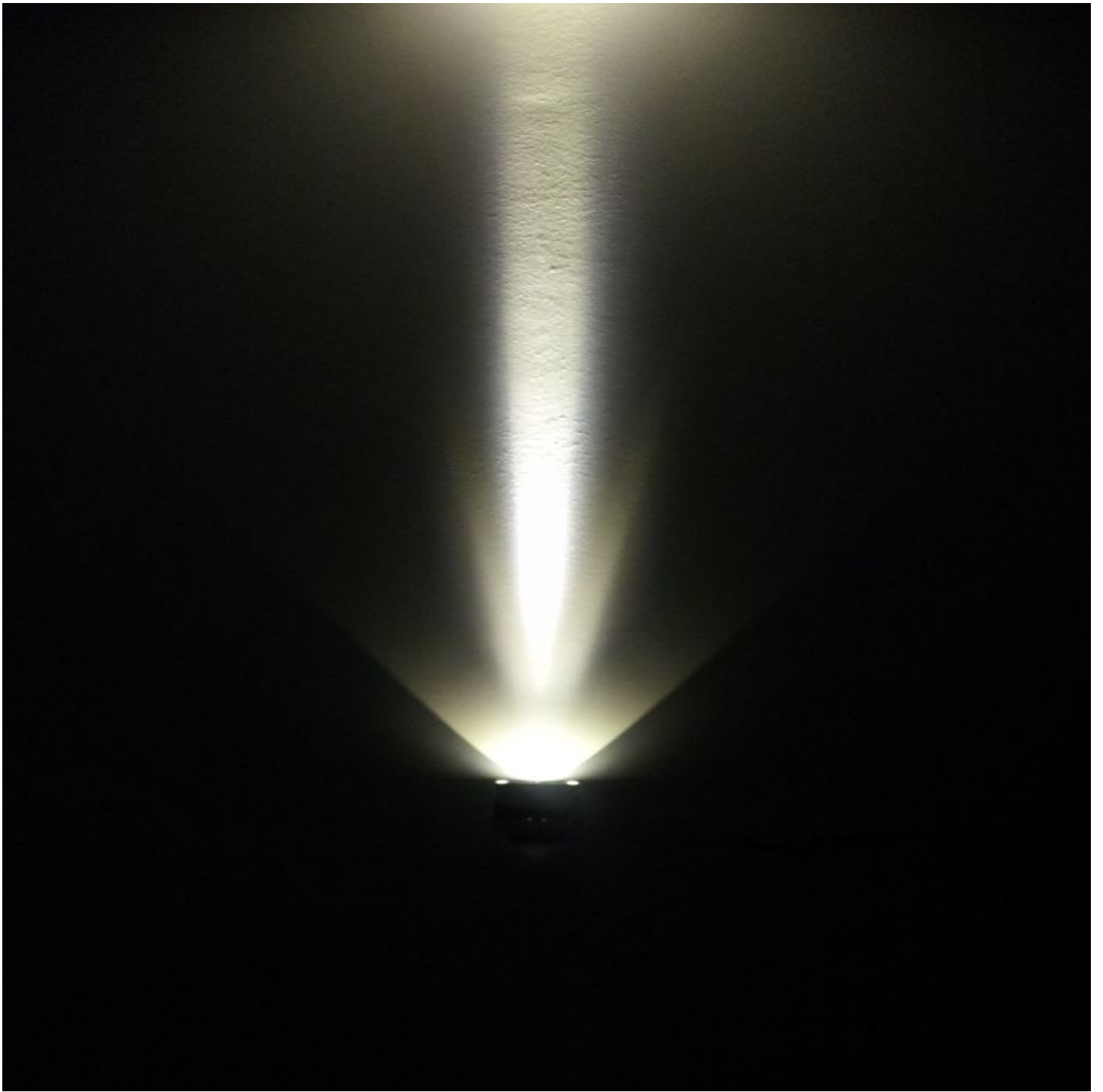


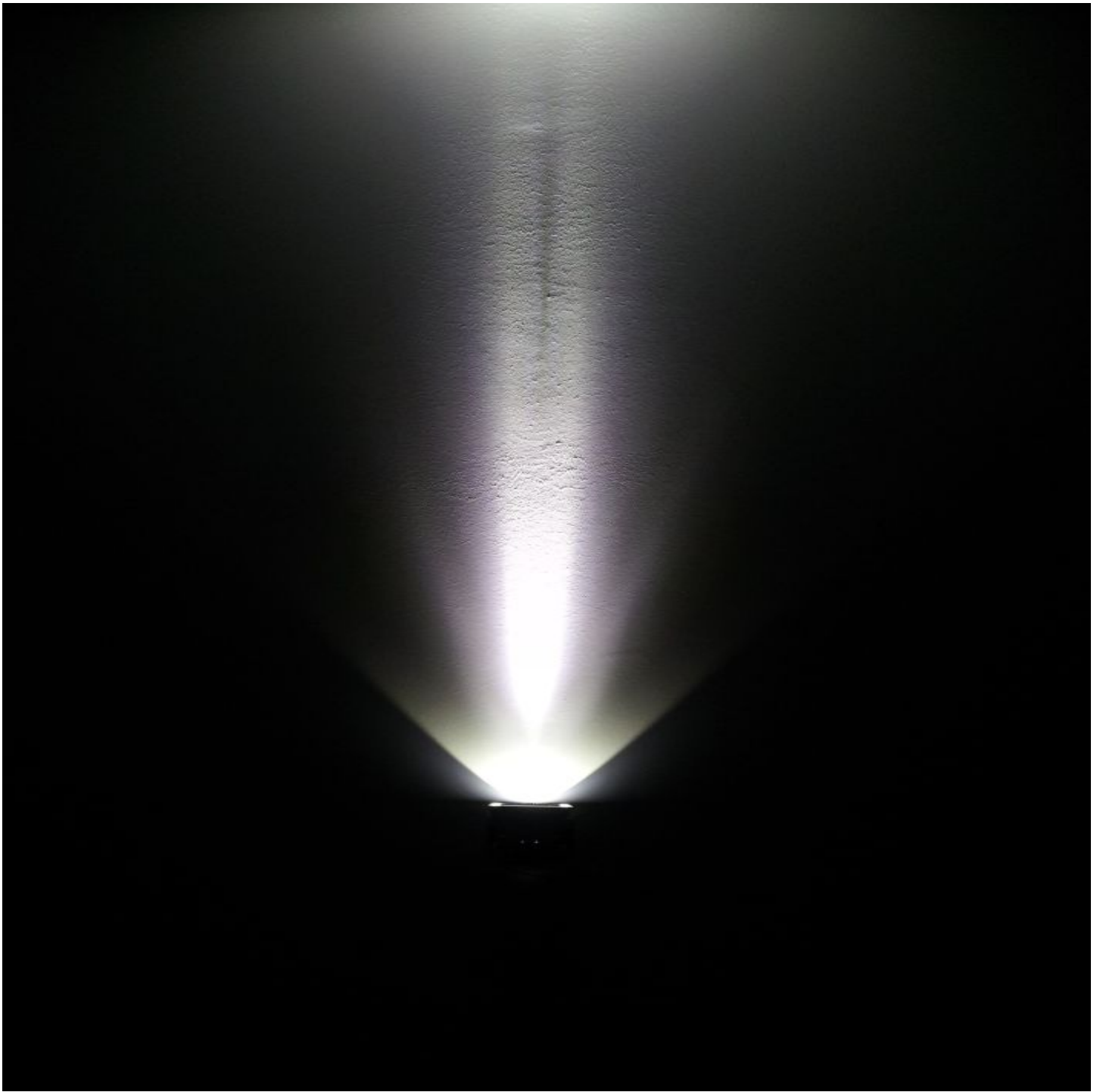


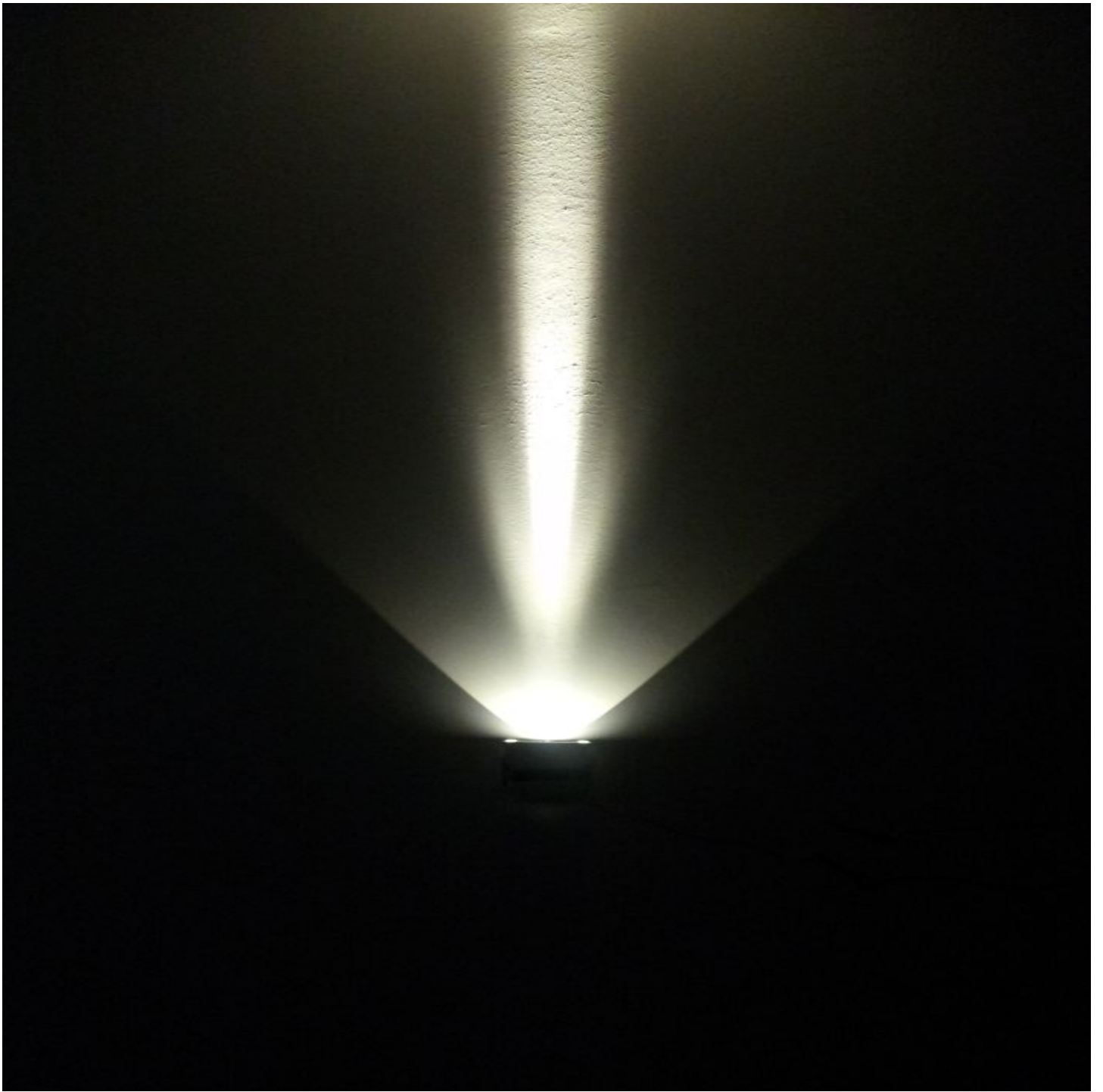


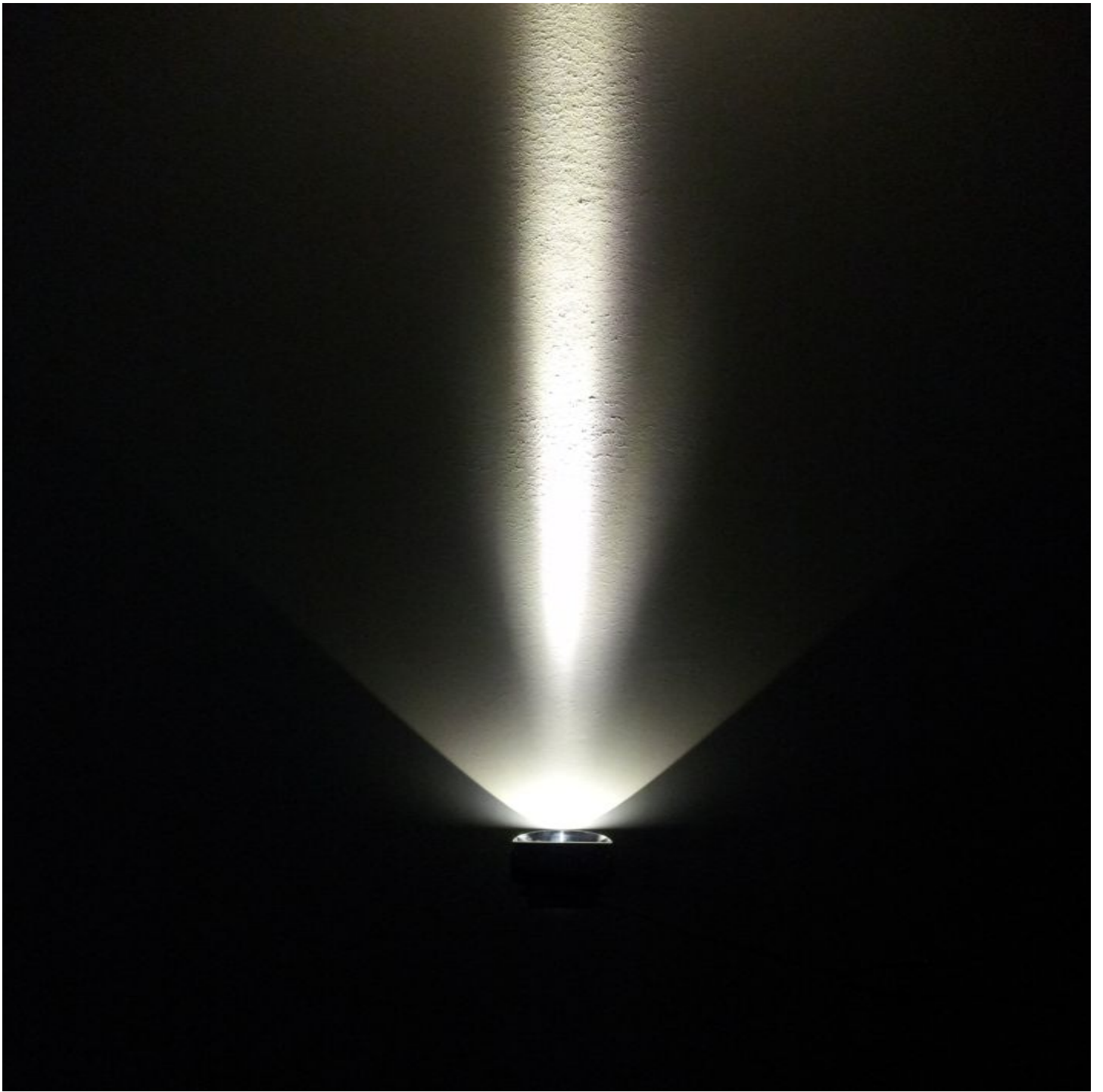


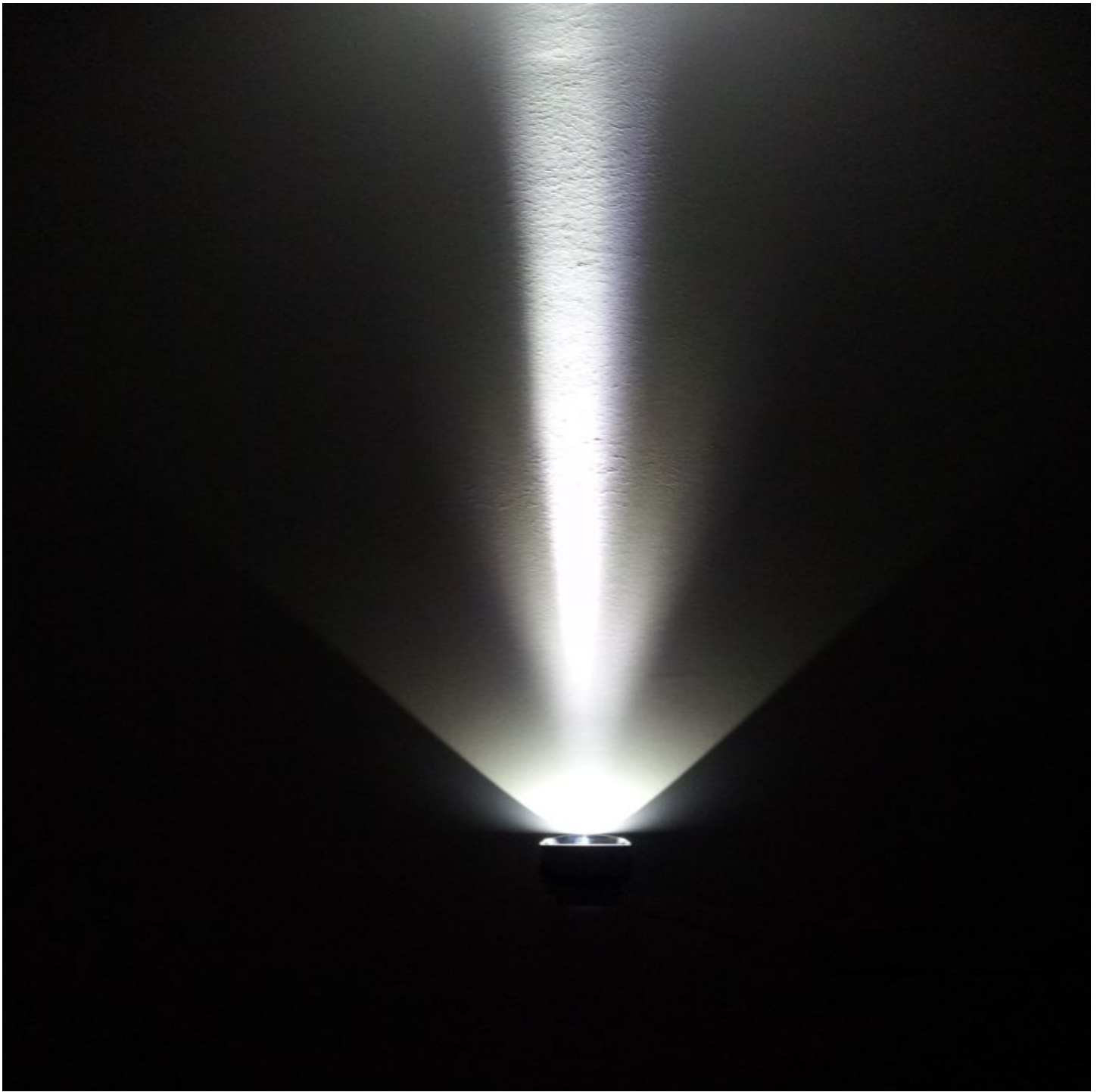


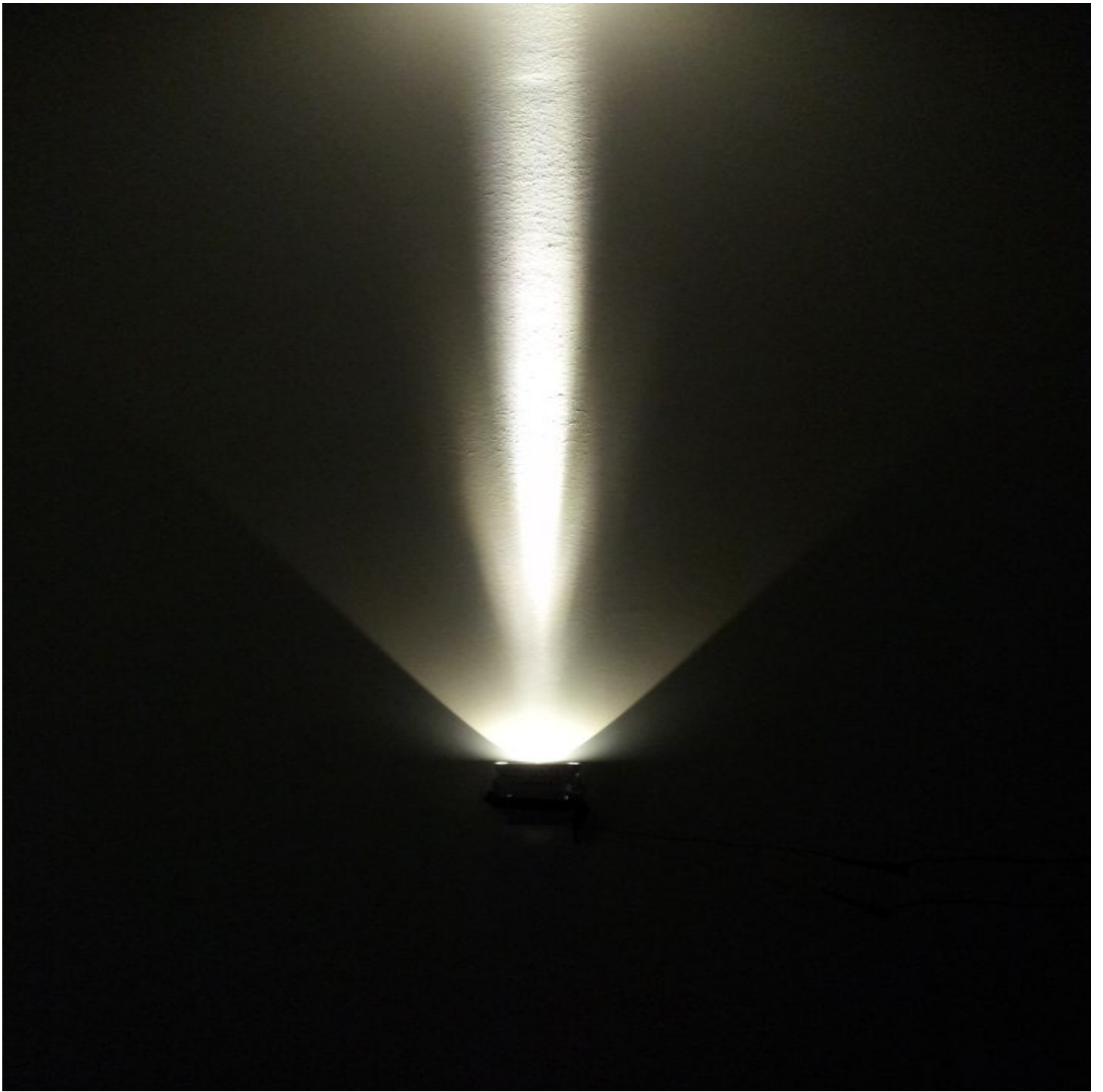












NOTE: The typical divergence will be changed by different color, chip size and chip position tolerance. The typical total divergence is the full angle measured where the luminous intensity is half of the peak value.