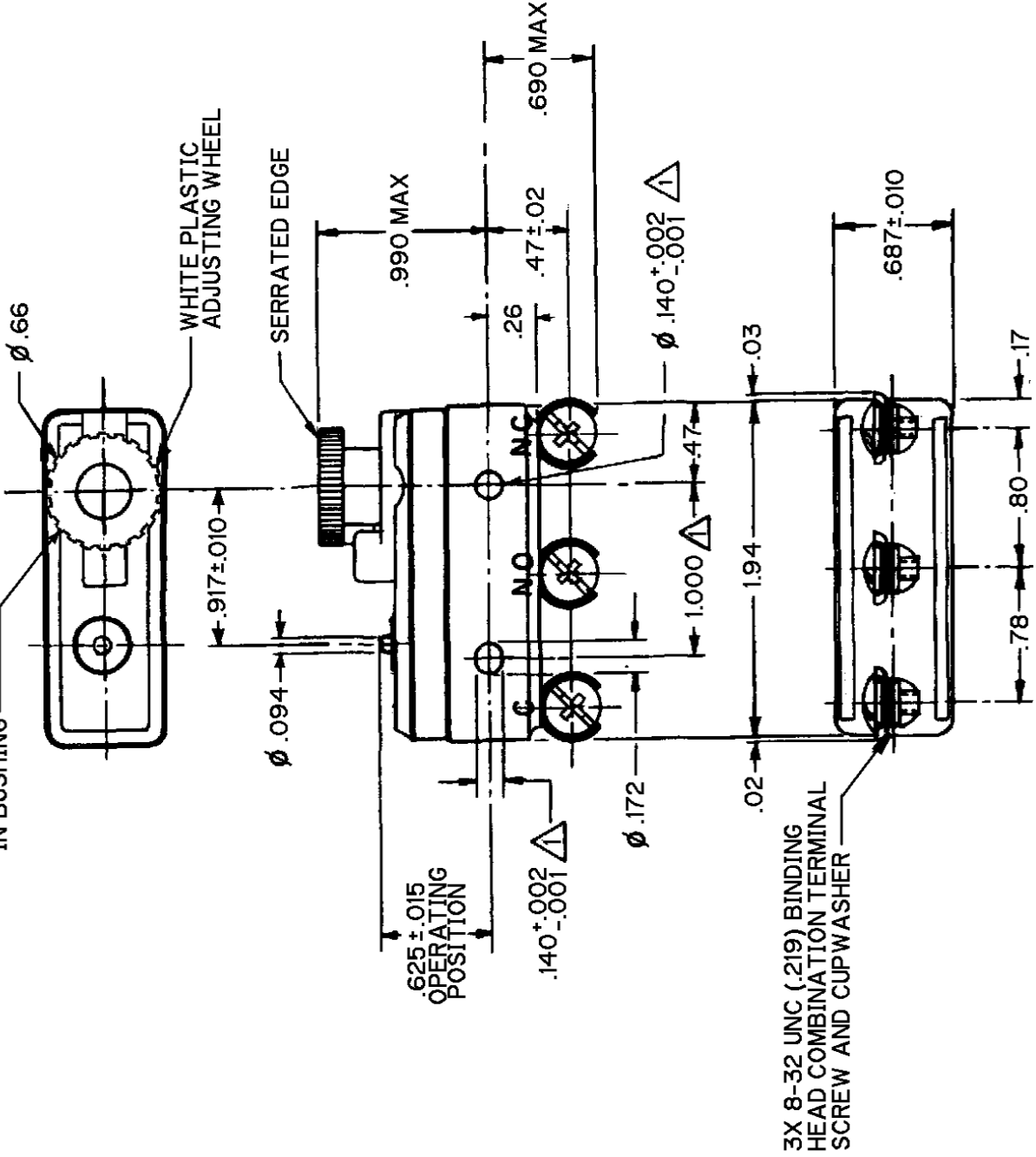


SWITCH - BASIC

MICRO SWITCH
a Honeywell Division

FED. MFG. CODE 91929

LUBRICATED THREADS
IN BUSHING



3X 8-32 UNC (.219) BINDING
HEAD COMBINATION TERMINAL
SCREW AND CUP WASHER

NOTES

- 1 MOUNTING HOLES WILL ACCEPT PINS OR SCREWS OF $\phi .139$ MAX ON $1.000 \pm .002$ CENTERS
- 2 - DIAL WHEEL IS SHOWN AT THE MAX SETTING OF BREAK DISTANCE
- 3 - DIAL WHEEL ROTATION 300°

ANSI Y14.5M-1982 APPLIES

THIS DRAWING COVERS A PROPRIETARY ITEM AND IS THE PROPERTY OF MICRO SWITCH, A DIVISION OF HONEYWELL. THIS DRAWING IS NOT TO BE COPIED OR USED WITHOUT THE APPROVAL OF MICRO SWITCH.



CHARACTERISTICS		ELECTRICAL DATA		SCALE	
AT MIN SETTING		CONTACT ARRANGEMENT		SCALE PRINT	
OPERATING FORCE	-----6-10 OZ	SPDT		UNLESS OTHERWISE SPECIFIED TOLERANCES ARE	
RELEASE FORCE	-----4 OZ MIN	-L11-		ONE PLACE (.0)	$\pm .030$
DIFFERENTIAL TRAVEL	-----.0002-.0005	UNDERWRITERS' LAB. INC. LISTED RATING		TWO PLACE (.00)	$\pm .015$
OVERTRAVEL	----- .005 MIN	15A-125, 250 OR 277 VAC		THREE PLACE (.000)	$\pm .005$
		1/8 HP-125 VAC; 1/4 HP-250 VAC		ANGLES	\pm
DRAWN				WEIGHT	
FORMTEK					

X110623-BS

REPLACES PR-23535

12BS218

PAGE 1 OF 1

CATALOG LISTING
M
2
ISSUE

CHECK

REVISIONS
A 10995658
DLT
28 OCT 99

CHECK

18 JUN 98

18 JUN 98

J A T

CHECK

18 JUN 98

CHECK

18 JUN 98

DLT

18 JUN 98

FORMTEK