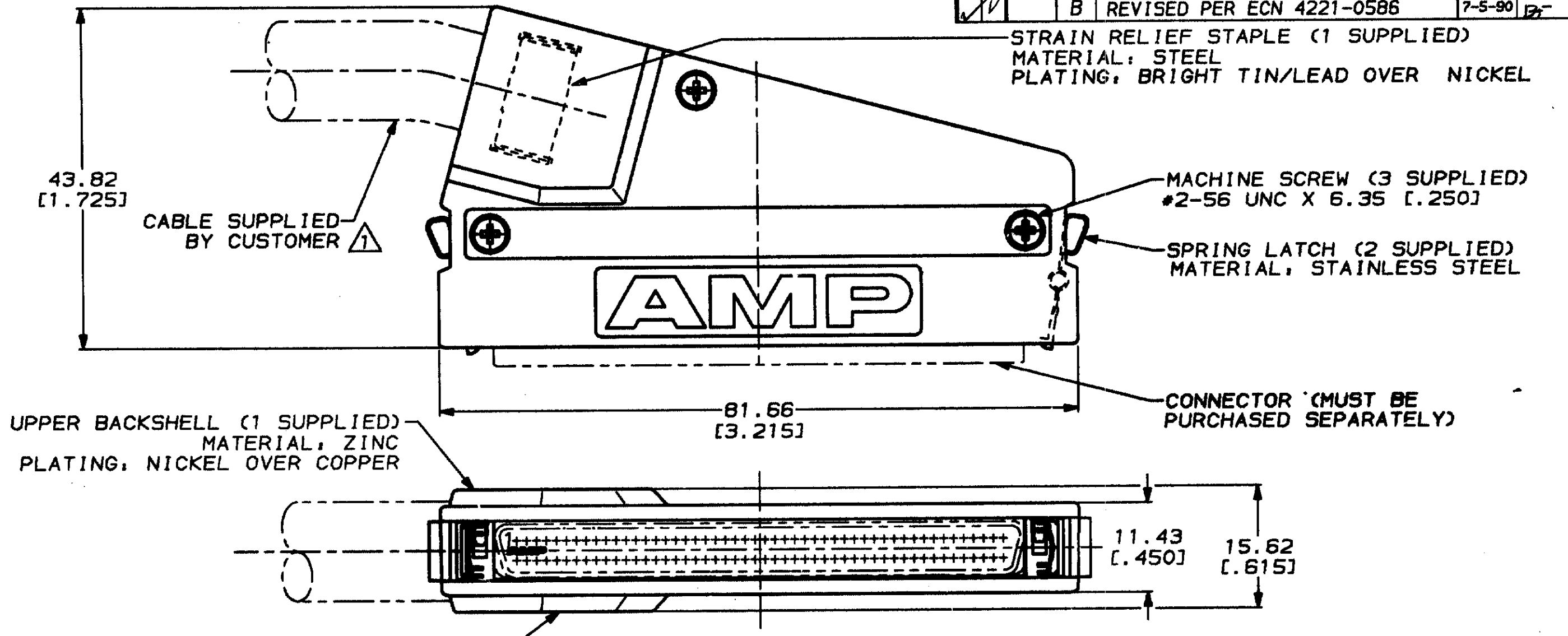


THIS DRAWING IS UNPUBLISHED. RELEASED FOR PUBLICATION ,19 .  
© COPYRIGHT 19 BY AMP INCORPORATED. ALL INTERNATIONAL RIGHTS RESERVED.

MOD 8 LOC BD DTSY 39

ZONE		LTR	DESCRIPTION	DATE	APPO
		0	RELEASED PER NPR 2244 WAS 88-5870-48	12/01/88	-
		A	REVISED PER ECN 4221-0453	10/30/88	MAM
		B	REVISED PER ECN 4221-0586	7-5-90	BT

D  
C  
B  
A



DO NOT SCALE PRINT.  
UNLESS SPECIFIED  
DIMENSIONS IN MM (INCHES)  
TOLERANCES ON:  
2 PLC DEC  $\Delta$  -  
3 PLC DEC  $\Delta$  0.38 [.015]  
ANGLES  $\Delta$  -

MATERIAL -

FINISH -

WEIGHT -

DR 12/20/88  
H.E. SHIRK  
CHK 12/20/88  
N.A. MCCAFFREY  
APPD 12/20/88  
J.L. BROSHARD  
APPD 12/20/88  
C.E. REYNOLDS  
PRODUCT SPEC -  
APPLICATION SPEC -  
WEIGHT -

AS SHOWN	749206-1
REMARKS	PART NO
<b>AMP</b> AMP INCORPORATED Harrisburg, Pa. 17105	
NAME INDIVIDUAL KIT, UNASSEMBLED, 100 POSITION, 75° EXIT, UNKEYED, AMPLIMITE .050 Series	
SIZE <b>B</b>	PCON NO 00779
SCALE 2:1	DRAWING NO 749206
	SHEET 1 OF 1

**METRIC**