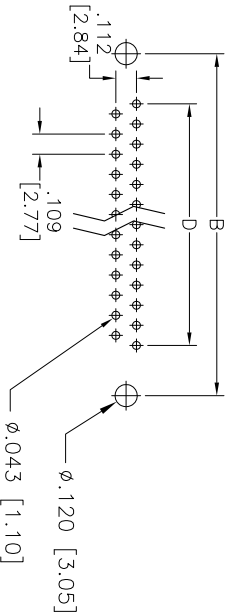
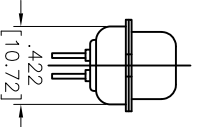
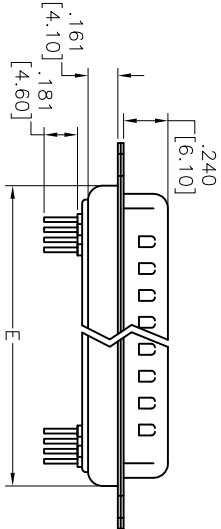
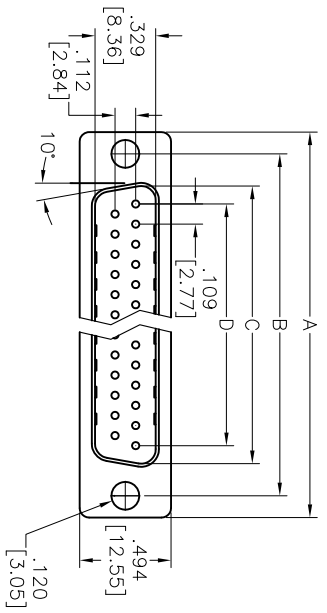


APPROVED: _____
 DATE: _____ TITLE: _____

Rev	AWO #	Description	Date	Appr
-		RELEASED	4/13/05	
-		CHART UPDATE	4/27/06	
A		REDRAWN	12/8/11	



RECOMMENDED PCB LAYOUT

SPECIFICATIONS:

Material: Insulator: PBT, Thermoplastic, glass filled, rated UL 94V-0
 Insulator color: Black
 Contacts: Copper alloy
 Shell: Steel, Tin plated
Plating: Gold flash over Nickel underplate overall
Electrical: Operating voltage: 250 VAC max.
 Current rating: 1 Amp max.
 Contact resistance: 20 mohms max.
 Insulation resistance: 1,000 Mohms min. @DC 500V
 Dielectric withstanding voltage: 1,000 VAC for 1 minute
Temperature Rating: Operating temperature: -55°C to +85°C
Environmental: Lead free, RoHS compliant.

DXXX	NO. OF CONTACTS	DIMENSIONS				
		A	B	C	D	E
DE09	9	1.213 [30.81]	.984 [24.99]	.666 [16.92]	.436 [11.08]	.756 [19.20]
DA15	15	1.543 [39.20]	1.311 [33.30]	.994 [25.25]	.763 [19.39]	1.091 [27.70]
DB25	25	2.088 [53.04]	1.852 [47.04]	1.534 [38.96]	1.309 [33.24]	1.618 [41.10]
DC37	37	2.732 [69.40]	2.500 [63.50]	2.182 [55.42]	1.963 [49.86]	2.256 [57.30]

UNLESS OTHERWISE SPECIFIED
 ALL DIMENSIONS ARE INCHES [MM]
 TOLERANCES: EXCEPT AS NOTED
 INCHES: .X ± .10 ØXX ± .015
 .XX ± .020 ØXXX ± .010
 .XXX ± .015

ADAM TECH
 909 Railway Avenue, Union, NJ 07083
 Phone: 908-687-5000 Fax: 908-687-5710

**D-SUB PLUG, STRAIGHT PCB TAIL
 STANDARD PROFILE**

DRAWN	SS	4/13/05	SIZE	PART NO.	DXXX-PT-1	REV.	A
CHECKED			X				
APPROVED			REF:	S00087	SCALE: NTS	SHEET 1 OF 1	