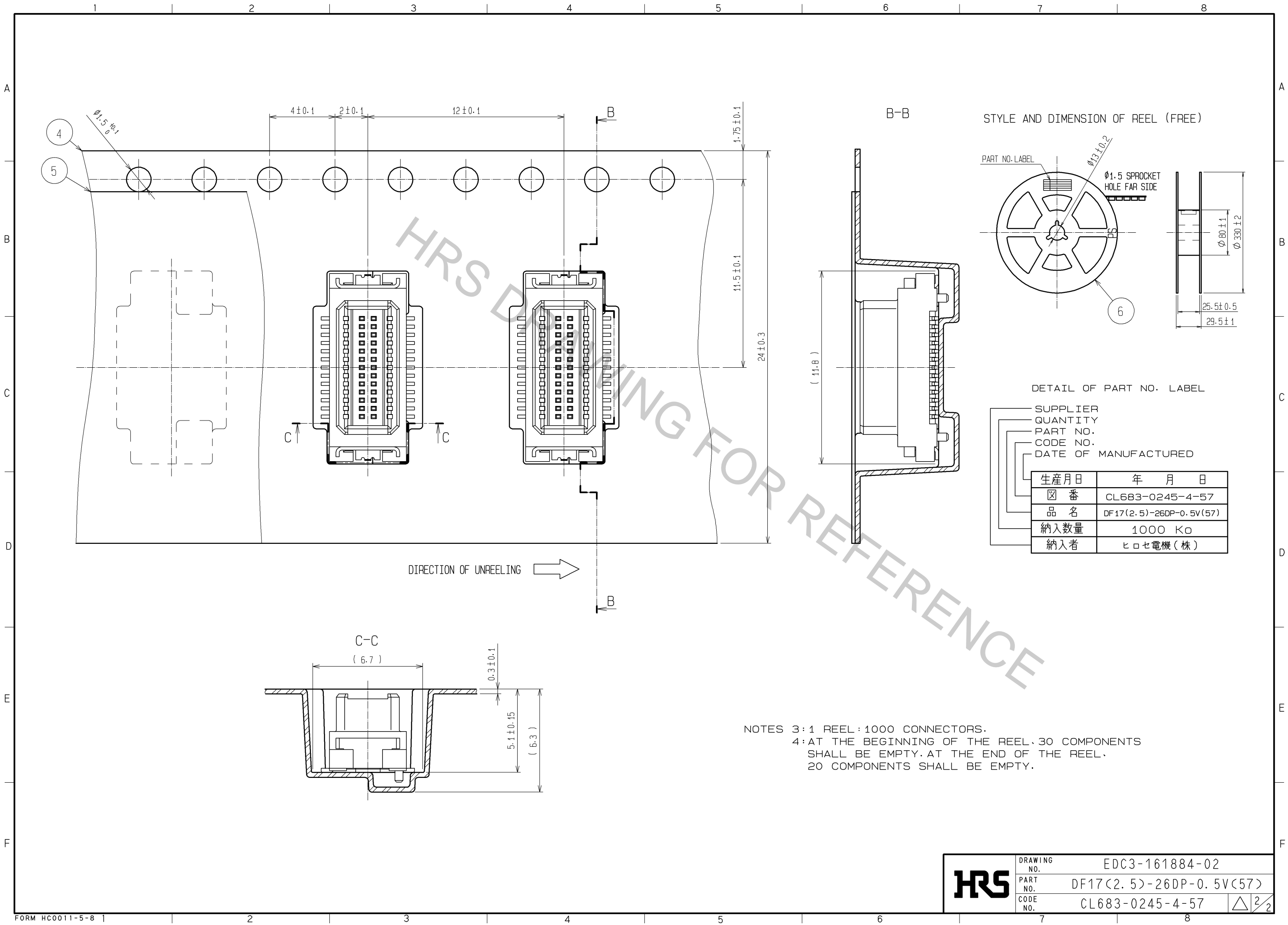


- NOTES
- 1 LEAD CO-PLANARITY INCLUDE REINFORCED METAL FITTINGS SHALL BE 0.1mm MAX.
 - 2 WHEN A PART MARKED WITH HAS A PATTERN BUT NO RESIST ON IT. TAKE CARE TO PREVENT THE CONNECTOR FROM TOUCHING IT.

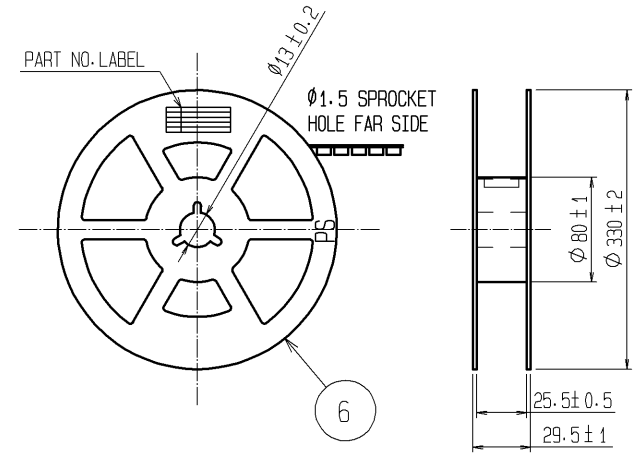
2	POLYAMIDE (PA6T)	WHITE BEIGE . UL94V-0	6	PS	PLASTIC REEL . BLACK
1	PHOSPHER BRONZE	CONTACT AREA:GOLD PLATED 0.1μm min LEAD AREA:TIN PLATED 1 μm min UNDER PLATING:NICKEL PLATED 1 μm min	5	POLYESTER	CLEAR (COVER TAPE)
			4	A-PET	CLEAR (EMBOSSD CARRIER TAPE)
			3	PHOSPHER BRONZE	TIN PLATED 1μm min. UNDER PLATING:NICKEL PLATED 1μm min
NO.	MATERIAL	FINISH . REMARKS	NO.	MATERIAL	FINISH . REMARKS

UNITS mm		SCALE 5 : 1	COUNT 	DESCRIPTION OF REVISIONS	DESIGNED	CHECKED	DATE
HRS HIROSE ELECTRIC CO., LTD.		APPROVED : KH. IKEDA	08.11.27	DRAWING NO.	EDC3-161884-02		
		CHECED : TS. MIYAZAKI	08.11.27	PART NO.	DF17(2.5)-26DP-0.5V(57)		
		DESIGNED : TY. YAMASAKI	08.11.26	CODE NO.	CL683-0245-4-57		
		DRAWN : TY. YAMASAKI	08.11.26		1/2		

Apr.1.2017 Copyright 2017 HIROSE ELECTRIC CO., LTD. All Rights Reserved.



STYLE AND DIMENSION OF REEL (FREE)



DETAIL OF PART NO. LABEL

SUPPLIER	
QUANTITY	
PART NO.	
CODE NO.	
DATE OF MANUFACTURED	
生産月日	年 月 日
<input checked="" type="checkbox"/> 番	CL683-0245-4-57
品名	DF17(2.5)-26DP-0.5V(57)
納入数量	1000 K0
納入者	ヒロセ電機(株)

NOTES 3:1 REEL : 1000 CONNECTORS.
 4: AT THE BEGINNING OF THE REEL, 30 COMPONENTS SHALL BE EMPTY. AT THE END OF THE REEL, 20 COMPONENTS SHALL BE EMPTY.

HRS	DRAWING NO.	EDC3-161884-02
	PART NO.	DF17(2.5)-26DP-0.5V(57)
	CODE NO.	CL683-0245-4-57
		△ 2/2