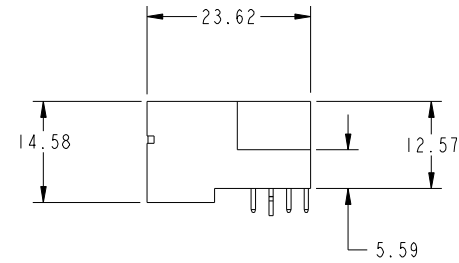
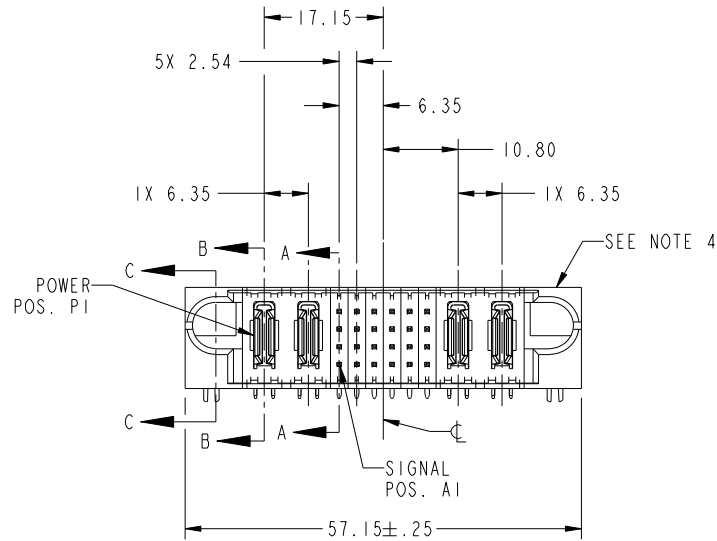
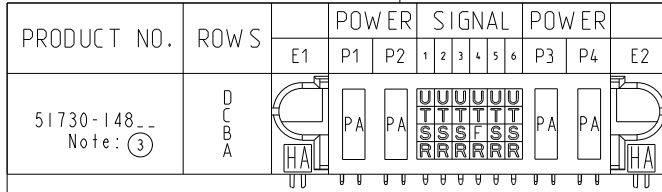


Tous droits strictement reserves. Reproduction ou communication a des tiers interdite sous quelque forme que ce soit sans autorisation écrite du propriétaire. Propriete de c FCI. Droits de reproduction FCI.

All rights strictly reserved. Reproduction or issue to third parties in any form whatever is not permitted without written authority from the proprietor. Property of FCI. Copyright FCI.



CODE	DIM "M" MATING LENGTH	CONTACT TYPE
F	5.59	SIGNAL
R	6.86	SIGNAL
S	6.86	SIGNAL
T	6.86	SIGNAL
U	6.86	SIGNAL
PA	N/A	POWER
HA	N/A	HOLD-DOWN

mat'l code				SEE NOTE 2		tolerances unless otherwise specified		CUSTOMER		FCI	
ltr	ecn no.	dr	date	linear	0.X ± 0.5	projection		COPY		www.fciconnect.com	
A	DG08-0157	SH	06/13/08	angles	0.XX ± 0.25	MIM		title		2P + 24S + 2P	
				dr	0.XXX ± 0.1	← MIM →		product family		PwrBlade	
				enr	0° ± 2°	scale		size		code	
				chr	Sincere He 05/30/08	1:1		dwg no		213	
				appd	Sincere He 05/30/08			51730-148		sheet	
					Gary Hsieh 05/30/08			A		1 of 4	
					Joseph Hsia 05/30/08						
sheet index	revision sheet	A	A	A	A						
		1	2	3	4						

cage code 22526

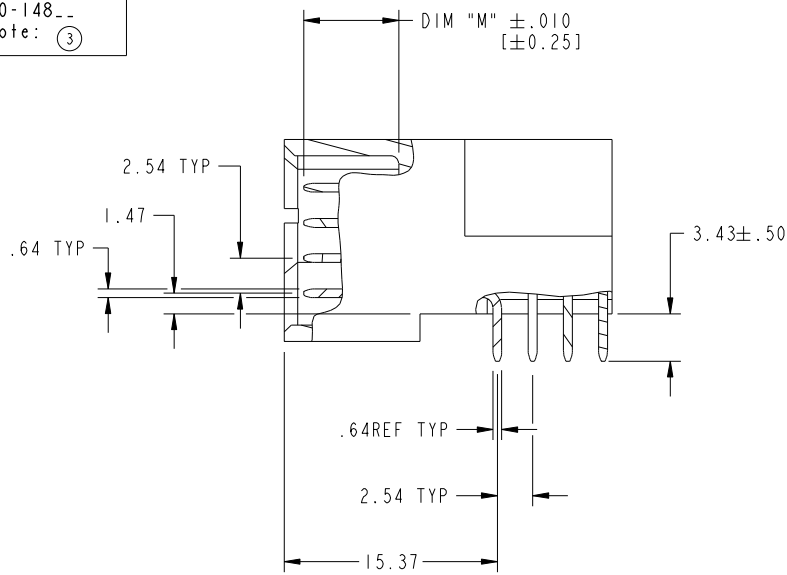
Pro/E

Tous droits strictement reserves. Reproduction ou communication a des tiers interdite sous quelque forme que ce soit sans autorisation écrite du propriétaire. Propriete de c FCI. Droits de reproduction FCI.

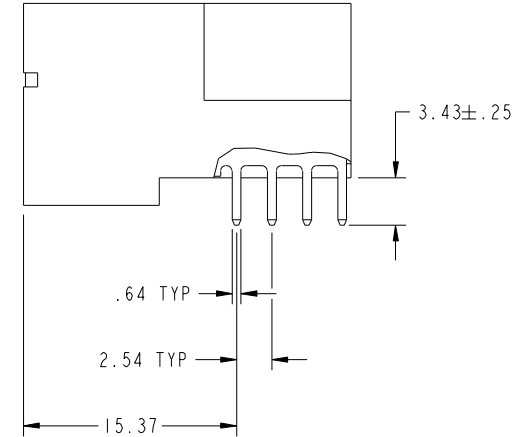
All rights strictly reserved. Reproduction or issue to third parties in any form whatever is not permitted without written authority from the proprietor. Property of FCI. Copyright FCI.



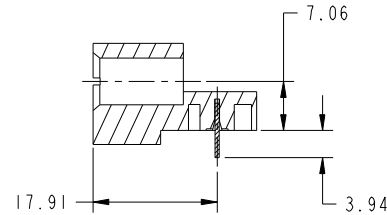
PRODUCT NUMBER  
51730-148--  
Note: ③



BROKEN-OUT SECTION A-A  
SCALE 2:1



BROKEN-OUT SECTION B-B  
SCALE 2:1



SECTION C-C

mat'l code				SEE NOTE 2		tolerances unless otherwise specified		CUSTOMER		FCI	
litr	ecr no.	dr	date	linear	0.X ±0.5	COPY		projection		www.fciconnect.com	
A					0.XX ±0.25	MIM		title		2P + 24S + 2P	
				angles	0.XXX ±0.1	1:1		product family		PwrBlade	
				dr	0° ±2°	scale		size		code	
				enr	Sincere He 05/30/08	A		dwg no		213	
				chr	Sincere He 05/30/08	A		51730-148		sheet	
				appd	Gary Hsieh 05/30/08	A		2 of 4			
					Joseph Hsia 05/30/08						
sheet index		revision sheet									

cage code 22526

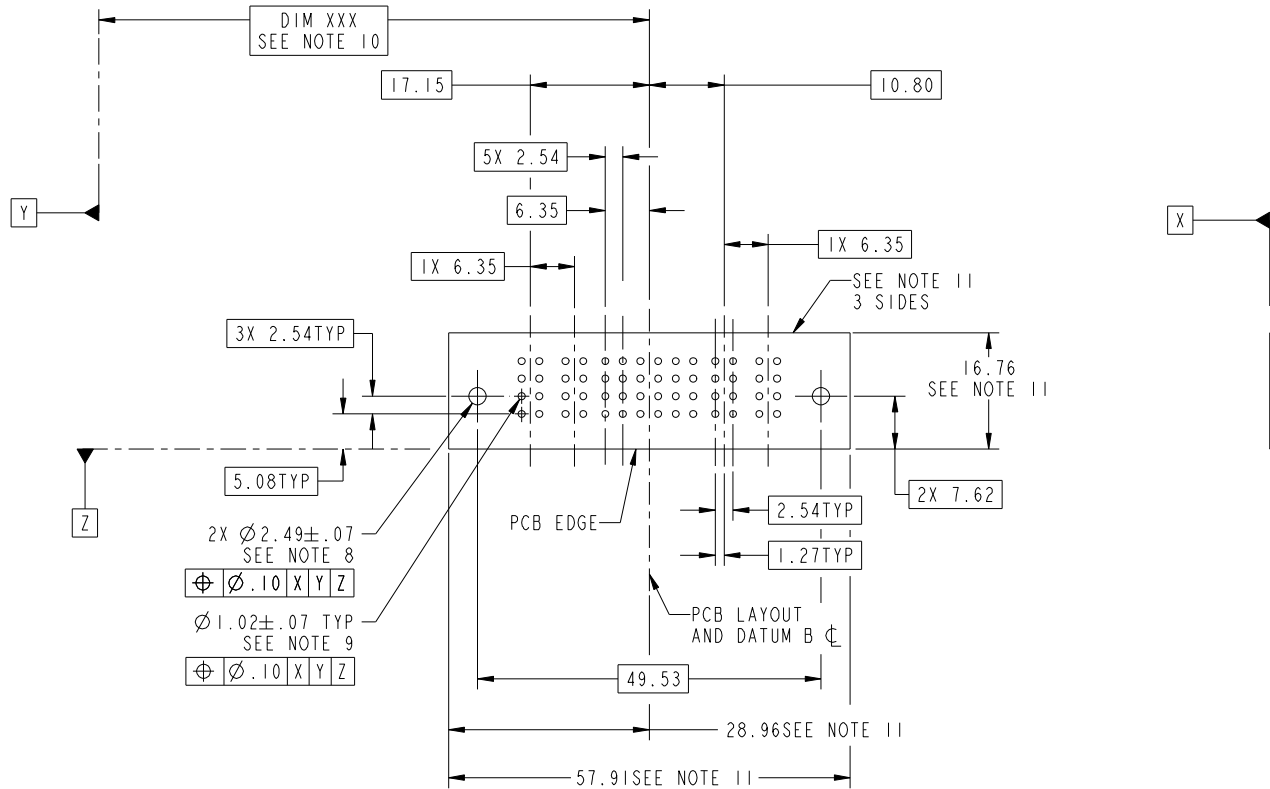
Pro/E

Tous droits strictement reserves. Reproduction ou communication a des tiers interdite sous quelque forme que ce soit sans autorisation écrite du propriétaire. Propriete de c FCI. Droits de reproduction FCI.



All rights strictly reserved. Reproduction or issue to third parties in any form whatever is not permitted without written authority from the proprietor. Property of FCI. Copyright FCI.

PRODUCT NUMBER  
51730-148--  
Note: ③



RECOMMENDED PCB LAYOUT

mat'l code		SEE NOTE 2		tolerances unless otherwise specified		CUSTOMER		FCI	
ltr	ecr no.	dr	date	linear	0.X ± 0.5	COPY		www.fciconnect.com	
A				linear	0.XX ± 0.25	projection		title	
				angles	0.XXX ± 0.1			2P + 24S + 2P RIGHT ANGLE SOLDER HEADER	
				dr	Sincere He 05/30/08			product family PwrBlade code 213	
				enr	Sincere He 05/30/08			size dwg no 213	
				chr	Gary Hsieh 05/30/08	scale 1:1		sheet 3 of 4	
				appd	Joseph Hsia 05/30/08	A		51730-148	
sheet index	revision sheet								

cage code 22526

Pro/E

Tous droits strictement reserves. Reproduction ou communication a des tiers interdite sous quelque forme que ce soit sans autorisation écrite du propriétaire. Propriete de c FCI. Droits de reproduction FCI.



All rights strictly reserved. Reproduction or issue to third parties in any form whatever is not permitted without written authority from the proprietor. Property of FCI. Copyright FCI.

PRODUCT NUMBER  
51730-148--  
Note: ③

NOTES:

1. DIMENSIONS AND TOLERANCES ARE IN ACCORDANCE WITH ASME Y14.5M, 1994 UNLESS OTHERWISE SPECIFIED.

CONNECTOR NOTES:

2. HOUSING MATERIAL: UL 94 V-0 GLASS FILLED HIGH-TEMP THERMOPLASTIC  
POWER CONTACT MATERIAL: COPPER ALLOY  
SIGNAL PIN MATERIAL: COPPER ALLOY

3. PLATING:

51730-148, 51730-148LF, PLATING SPEC. SEE PRINT: 10064183

4. MANUFACTURER'S NAME, P/N, AND DATE CODE TO APPEAR ON THIS SURFACE.

5. PRODUCT SPECIFICATION GS-12-149.  
APPLICATION SPECIFICATION BUS-20-067.

6. PACKAGED IN TRAYS.

PCB NOTES:

7. ALL HOLE DIAMETERS ARE FINISHED HOLE SIZE.

8. MOUNTING HOLES, WHERE APPLICABLE, ARE UNPLATED.

9.  $\varnothing .0453 \pm .0010$  [ $1.151 \pm 0.025$ ] DRILLED HOLES PLATED WITH  $.0003$  [ $0.008$ ] MIN SnPb OVER  $.001$  [ $0.03$ ] TO  $.003$  [ $0.08$ ] Cu PLATING TO ACHIEVE  $\varnothing .040 \pm .003$  [ $1.02 \pm .07$ ] HOLE.

10. "DIM XXX" TO BE DETERMINED BY THE CUSTOMER.

11. CONNECTOR KEEP-OUT ZONE.

mat'l code		SEE NOTE 2		tolerances unless otherwise specified		CUSTOMER		FCI		www.fciconnect.com	
ltr	ecr no.	dr	date	linear	$0.X \pm 0.5$	COPY		projection	title		
A					$0.XX \pm 0.25$	MIM			2P + 24S + 2P RIGHT ANGLE SOLDER HEADER		
				angles	$0.XXX \pm 0.1$	← MIM →			product family		PwrBlade
				dr	Sincere He 05/30/08	scale		size	dwg no		213
				enr	Sincere He 05/30/08	1:1		A	51730-148		sheet
				chr	Gary Hsieh 05/30/08						4 of 4
				appd	Joseph Hsia 05/30/08						
sheet index	revision sheet										

cage code 22526

Pro/E