

PART NUMBER	ITEM ① BODY	ITEM ② LUG	ITEM ③ NUT	QTY	FINISH	ITEM ④ BUSHING	QTY	FIG	"A"	REMARKS	CUSTOMER REFERENCE
108-0740-001	013-0035-001	016-0104-002	560-9040-012	1	2			I	.531	8	CATALOG PART
108-0740-002	013-0035-002	016-0104-002	560-9040-012	1	2			I	.625	8	
108-0740-003	013-0035-003	016-0104-002	560-9040-012	1	2			I	.750		
108-0740-004	013-0035-012	016-0104-002	560-9040-012	1	2			I	.906		
108-0740-005	013-0035-001				2			I	.531		
108-0740-006	013-0035-001		560-9040-012	2	2			I	.531	9	G. E. V-90424193
108-0740-007	013-0035-001		560-9040-012	1	2			I	.531		
108-0740-008	013-0035-014	016-0104-008	560-9040-010	1	5			I	.531		HONEYWELL 408910
108-0740-009	013-0035-001	016-0104-002	560-9040-012	1	2			I	.531	9	
108-0740-010	013-0035-016		560-9040-013	2	4			I	.531		BARKER AND WILLIAMSON
108-0740-011	013-0035-016	016-0104-002	560-9040-013	2	4			I	.531		RADIO SPECIALTY MFG. PORTLAND, OR
108-0740-012	013-0035-016	016-0104-002	560-9040-013	1	3			I	.531		ESPEY MFG CO 32.1597
108-0740-013	013-0035-017		560-9040-013	1	3			I	.625		RCA-W306508-118
108-0740-014	013-0035-006		560-9040-011	1	3			I	.375	9	DUKANE 14122
108-0740-015	013-0035-001		560-9040-012	1	2			I	.531	9	
108-0740-016	013-0035-017	016-0104-002	560-9040-011	1	3			I	.625		BARKER AND WILLIAMSON 5056
108-0740-017	013-0035-001		560-9040-012	1	2	596-9073-020	2	2	.531		CONTROL DATA
108-0740-018	013-0035-001		560-9040-012	2	2	596-9073-020	2	2	.531	9	CONTROL DATA
108-0740-019	013-0035-019	016-0104-002	560-9040-012	1	2			I	.25		COLLINS 360-0443
108-0740-020	013-0035-001	016-0104-002			2			I	.531	9	TEKTRONIX 131-031
108-0740-021	013-0035-044		560-9040-012	2	2			I	.781	9	PROGRAM REMOTE SYSTEMS
108-0740-022	013-0035-045	016-0104-002	560-9040-012	1	2			I	.406		DIETZ CO
108-0740-023	013-0035-001	016-0104-002			2			I	.531	9	TEKTRONIX 131-0031-00
108-0740-024	013-0035-001	016-0104-002	560-9040-012	1	2			I	.531	9 10	ROCKWELL COLLINS

DRAWING NO.	
C - 108-0740-001/024	
0 REVISIONS	
CHANGED: REVISED AND REDRAWN. WAS "B" SIZE, DATED 10-10-63. CONVERTED FRACTIONS TO DECIMALS. RENUMBERED NOTES. FINISH NOTES WERE IN TAB.	
36	12-08-87 E J G S A W 01-13-88 ECO 23203
ADDED: 108-0740-024. NOTE 10.	
37	11-17-88 E J M H G S A W 12-08-88 ECO 23729
CHANGED: NOTE 10 500 ASSEMBLIES WAS 1000	
38	04-19-89 E J R F G S A W 4-26-89 ECO 23954
VERSION UPDATE	
39	1-16-90 E J M H G S A W 1-19-90 ECO 24264
CHANGED: IN NOTE 10, PACK 100 PER BAG WAS 1 PER BAG.	
40	9-8-91 R H R J H M 9-10-91 ECO 40536
DELETED: LABEL 559-1154-004	
40a	3-9-94 R H D M R J B ECN 42341
CHANGED: FLAGNOTE 10 JOHNSON COMPONENTS WAS EFJ DELETED: CUSTOMER PART NUMBER FROM FLAGNOTE 10 ***** * REVISION NUMBER FOLLOWED BY AN ALPHA * * CHARACTER INDICATES DRAWING CLARIFICATION OR PART NUMBER ADDITION ONLY. * *****	
40b	11-17-98 R H D M R J B ECN 46028

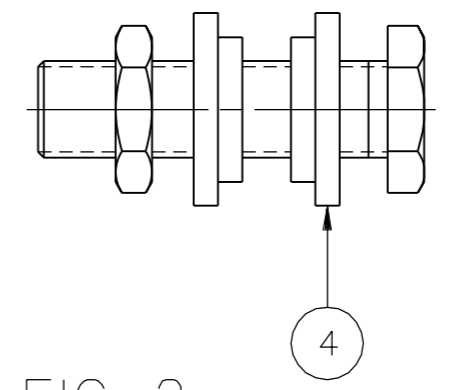
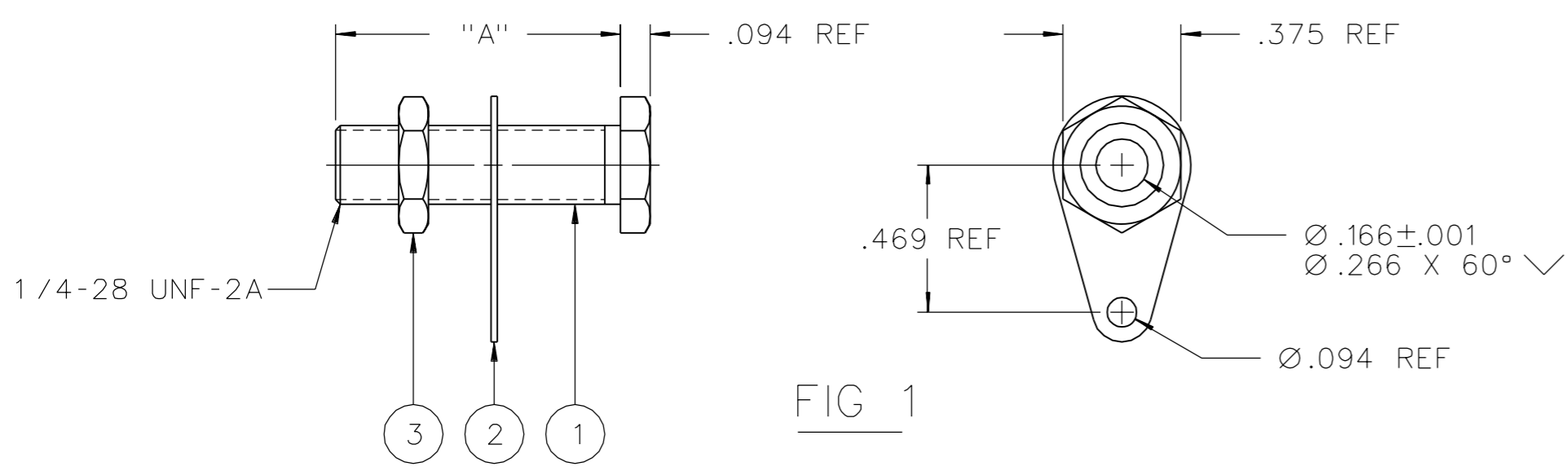



FIG 2
OTHERWISE SAME AS FIG 1

- NOTES:
- THIS PART MATES WITH 108-0750-001 SERIES BANANA PLUGS.
 - FINISH: (JACK AND NUT) NICKEL PL .0001 MIN.
 - FINISH: (JACK AND NUT) NICKEL PL .0002 MIN.
 - FINISH: (JACK AND NUT) NICKEL PL .0003 MIN.
 - FINISH: (JACK AND NUT) SILVER PL .0001 MIN.
 - FINISH: (LUG) TIN PL.
 - SHOULDER BUSHINGS MADE OF VULCANIZED FIBER.
 - PACKAGE PER MATERIAL CONTROL REQUIREMENT 023-0921-072. SHIP UNASSEMBLED.
 - SHIP UNASSEMBLED.
 - PACK SEPERATELY 100 EACH OF LUGS AND NUTS IN BAGS 041-0420-251. PACK THESE 2 BAGS IN BAG 041-0420-254 WITH 100 BODIES. OUTER BAG SHALL BE MARKED WITH EMERSON NETWORK POWER IDENTIFICATION, AND EIA DATE CODE ON LABEL.

CUSTOMER DRAWING
THIS DRAWING TO BE INTERPRETED PER ASME Y 14.5M - 1994
"μSTATION"
COMPANY CONFIDENTIAL

TOLERANCE UNLESS OTHERWISE SPECIFIED	DRAWN BY EJ	DATE 12-8-87	 Cinch CONNECTIVITY SOLUTIONS a bel group	Cinch Connectivity Solutions P.O. Box 1732 Waseca, MN 56093 1-800-247-8256		
DECIMALS mm	CHECKED BY	DATE		TITLE BANANA JACK		
.XX				DRAWING NO. C - 108-0740-001/024		
.XXX				SHEET 2 OF 2		
MATL	APPROVED BY GSQ	DATE 1-11-88	SCALE 2:1			
FINISH	RELEASE DATE 1-13-88					