

|                   |          |          |       |
|-------------------|----------|----------|-------|
| DWG. NO.          | 096-4332 |          |       |
| REVISIONS         |          |          |       |
| SYM.              | E.C.O.   | DATE     | APVD. |
| A                 | 28959    | 11/22/17 |       |
| DIM RACK MTG EARS |          |          |       |

**SPECIFICATIONS:**  
 SINGLE PHASE ON-LINE DOUBLE CONVERSION UNINTERRUPTIBLE POWER SUPPLY 2000VA/1800W

**INPUT**  
 RATED VOLTAGE: 100-120 VAC  
 FREQUENCY RANGE: 50/60 Hz  
 POWER FACTOR:  $\geq$  0.99 AT NORMAL VOLTAGE

**OUTPUT**  
 NOMINAL VOLTAGE: 100\*/110\*/115\*/120 VAC  $\pm$ 1%  
 FREQUENCY SYNC RANGE: 47-53 Hz or 57-63 Hz  
 FREQUENCY RANGE (BAT. MODE): 50Hz  $\pm$ 0.5Hz or 60Hz  $\pm$ 0.5Hz  
 CURRENT CREST RATIO: 5:1 (MAX.)  
 HARMONIC DISTORTION:  $\leq$ 2% THD (LINEAR LOAD), 8% MAX. (BATTERY MODE BEFORE SHUT DOWN)  
 EFFICIENCY: LINE MODE: 88% TYPICAL, 90% PEAK  
 BATTERY MODE: 85% TYPICAL, 88% PEAK

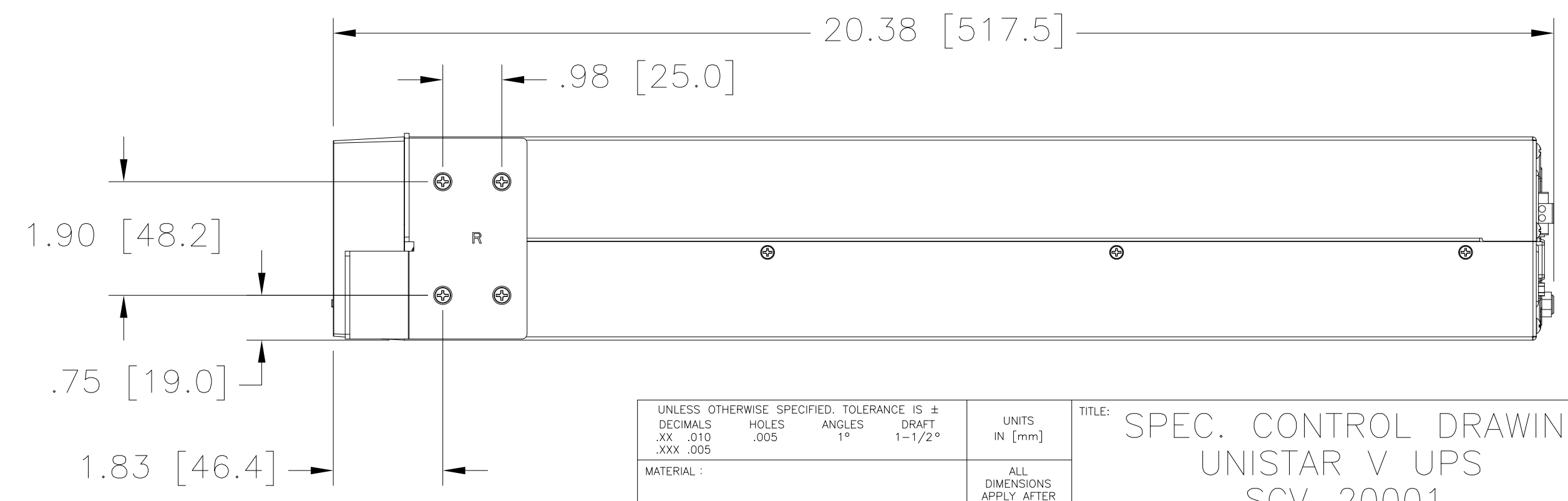
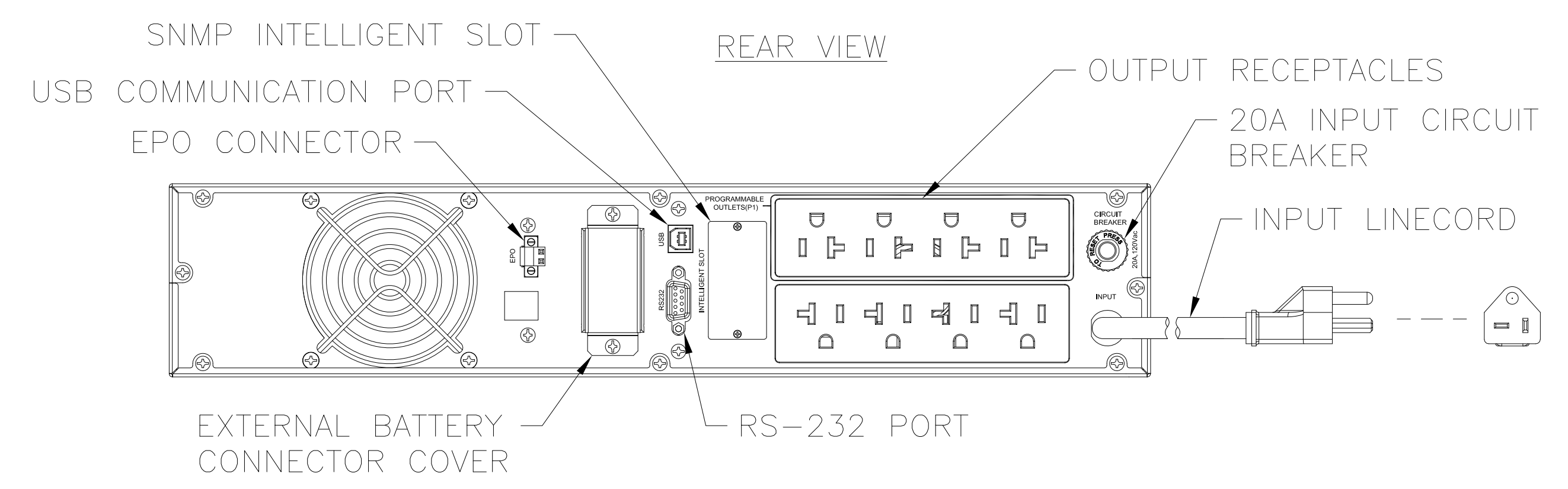
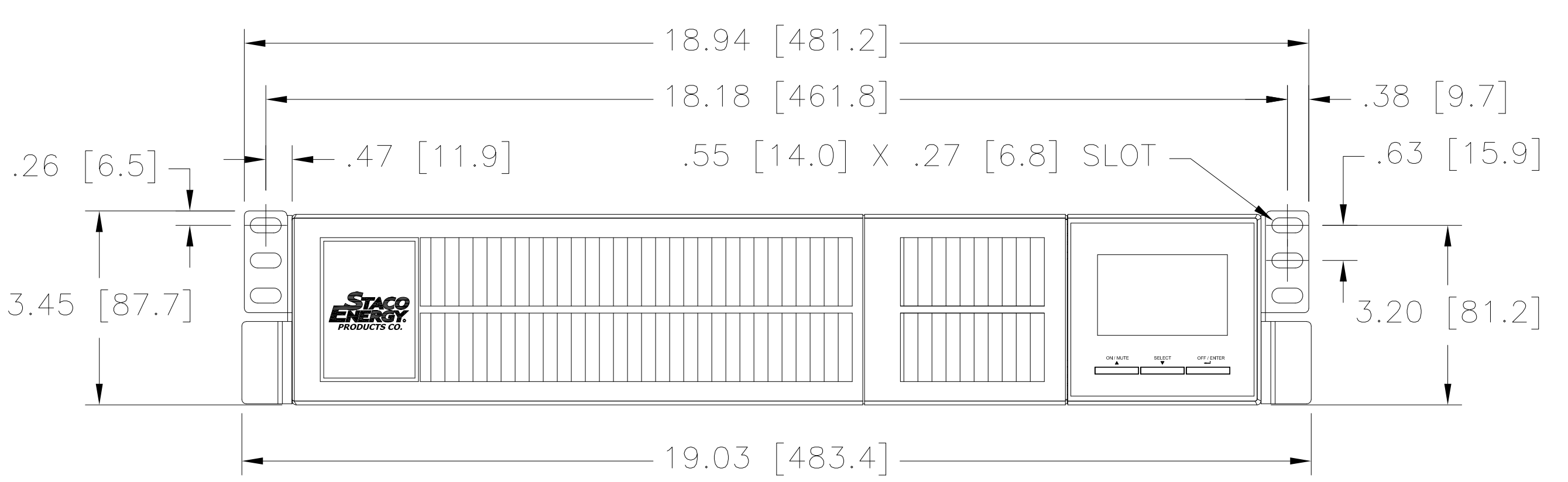
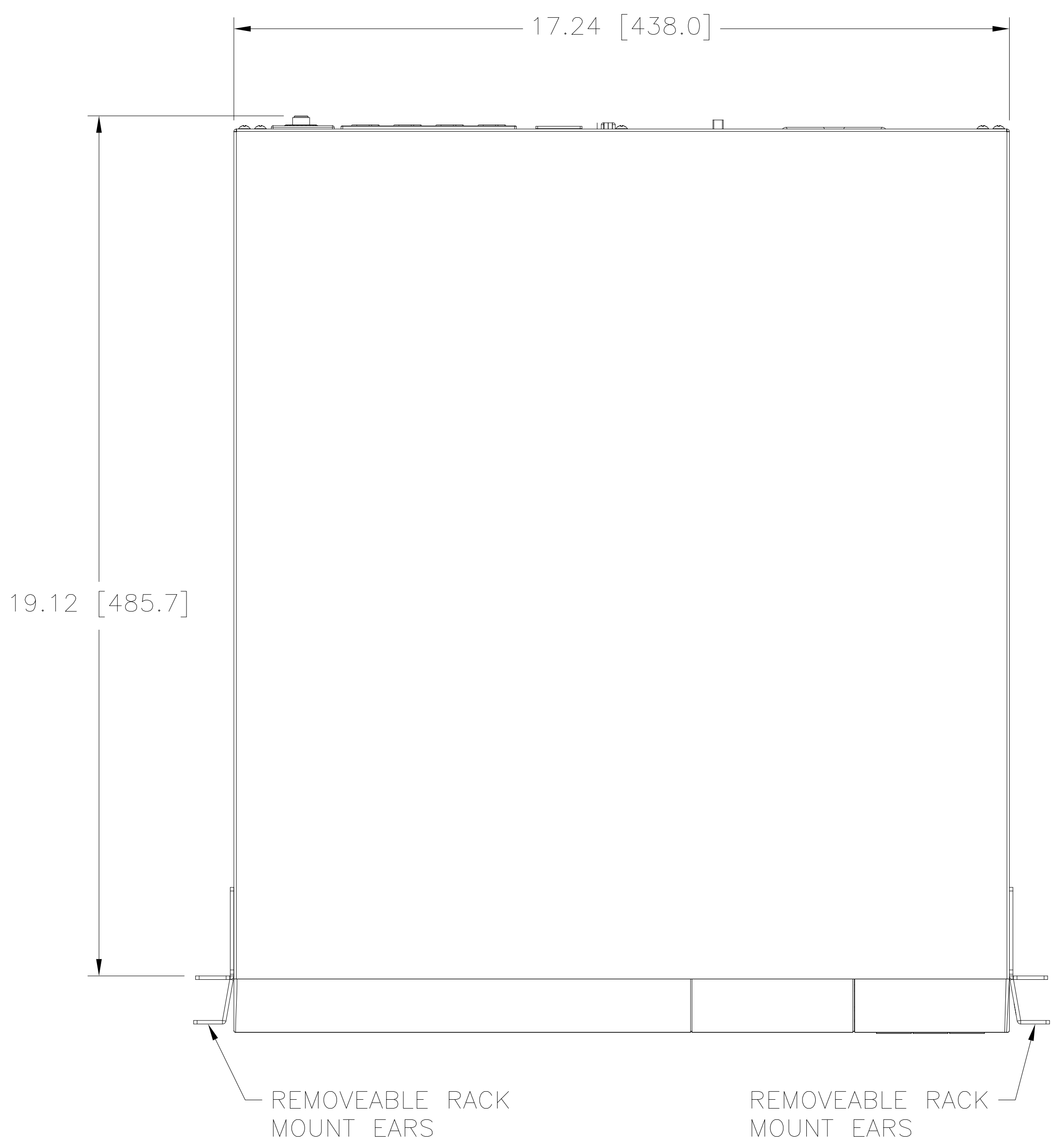
\*DERATE CAPACITY TO 95% WHEN THE OUTPUT VOLTAGE IS ADJUSTED TO 115VAC. DERATE CAPACITY TO 90% WHEN THE OUTPUT VOLTAGE IS ADJUSTED TO 110VAC. DERATE CAPACITY TO 80% WHEN THE OUTPUT VOLTAGE IS ADJUSTED TO 100VAC.

**BATTERY**  
 BATTERY TYPE: 12V 9AH  
 NUMBER OF BATTERIES: 4  
 TYPICAL RECHARGE TIME: 4 HOURS RECOVER TO 90% CAPACITY  
 CHARGING CURRENT (MAX.): 1A AT 54.7 VDC  $\pm$ 1%, 4A OR 6A FOR EXTERNAL BATTERIES

WEIGHT: 47 LBS (21 KG)

**ENVIRONMENTAL**  
 OPERATING TEMPERATURE: 0°C-40°C (32°F-104°F)(THE BATTERY LIFE WILL DECREASE WHEN > 25°C (77°F))  
 ALTITUDE: <1000m (3281 FT), 2000m (6562 FT) MAX.  
 IF THE UPS IS INSTALLED OR USED IN A PLACE WHERE THE ALTITUDE IS ABOVE THAN 1000M, THE OUTPUT POWER MUST BE DERATED ONE PERCENT PER 100M.  
 HUMIDITY: 20-90% RH AT 0°C - 40°C NON-CONDENSING  
 NOISE: <50 dBA (AT 1 METER)

UL LISTED TO UL1778



|   |       |          |        |                              |  |
|---|-------|----------|--------|------------------------------|--|
| UNLESS OTHERWISE SPECIFIED, TOLERANCE IS $\pm$  |       | UNITS    |        | TITLE: SPEC. CONTROL DRAWING |  |
| DECIMALS  | HOLES | ANGLES   | DRAFT  | UNSTAR V UPS                 |  |
| .XX .010  | .005  | 1°       | 1-1/2° | SCV-20001                    |  |
| .XXX .005   |       |          |        | DRAWN BY S.A. SMITH          |  |
| MATERIAL:   |       |          |        | DATE 6/26/15                 |  |
| ALL DIMENSIONS APPLY AFTER PLATING  |       |          |        | FIRST USED ON                |  |
| The information and design disclosed herein was originated by and is the property of STACO ENERGY PRODUCTS CO., which reserves all patent, proprietary, design, manufacturing, reproduction, use and sale rights thereto, and to any article disclosed therein except to the extent rights are expressly granted to others. The foregoing does not apply to vendor proprietary parts. |       |          |        | DO NOT SCALE DWG.            |  |
|   |       |          |        | CHECKER SAS                  |  |
|   |       |          |        | DATE 6/26/15                 |  |
|   |       |          |        | WEIGHT APPROX. 8300G         |  |
|   |       |          |        | ENGINEER SAS                 |  |
|   |       |          |        | DATE 6/26/15                 |  |
|   |       |          |        | SCALE 1/2                    |  |
|   |       |          |        | SHEET 1 OF 1                 |  |
|   |       | DWG. NO. |        | D 096-4332                   |  |

