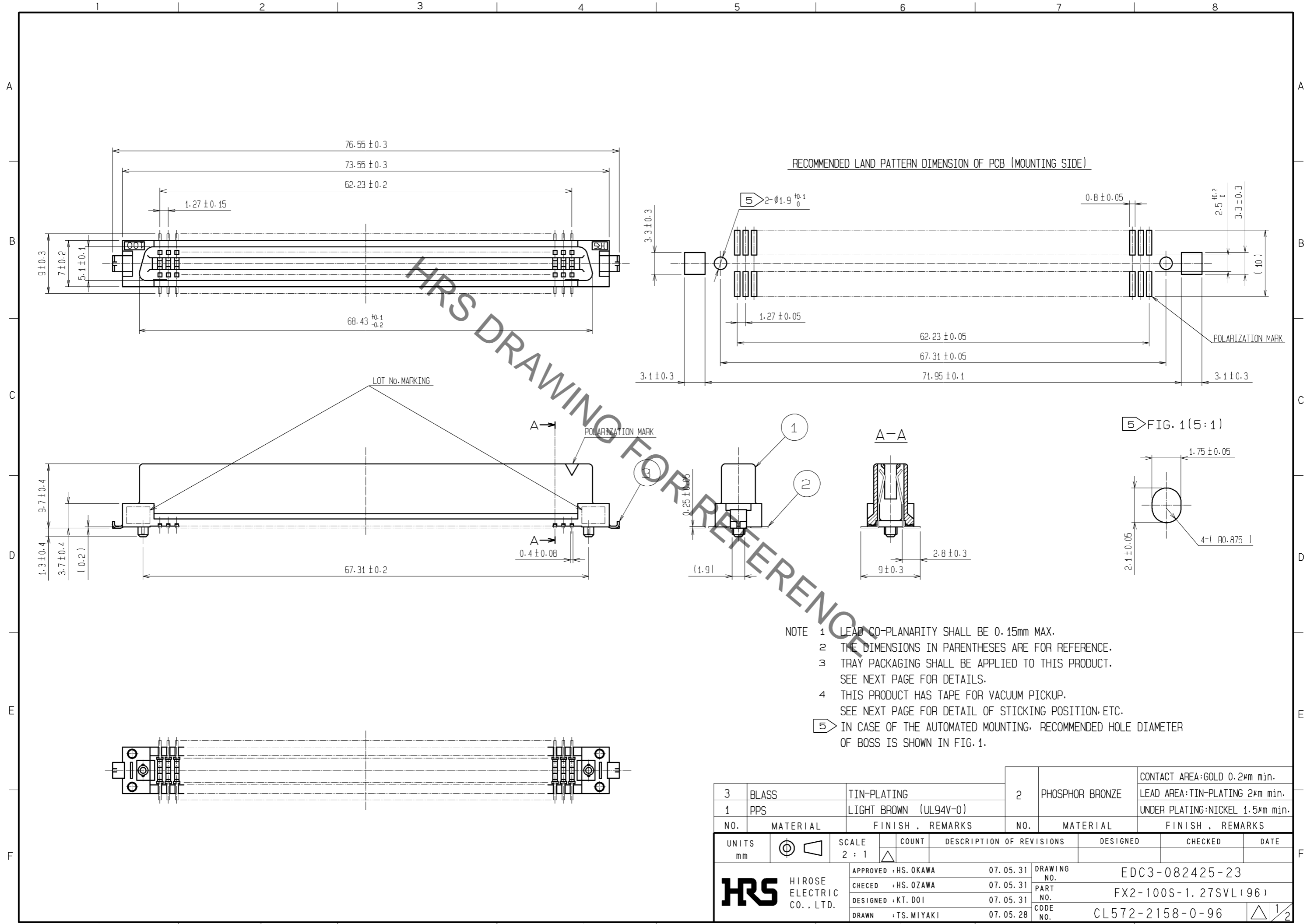


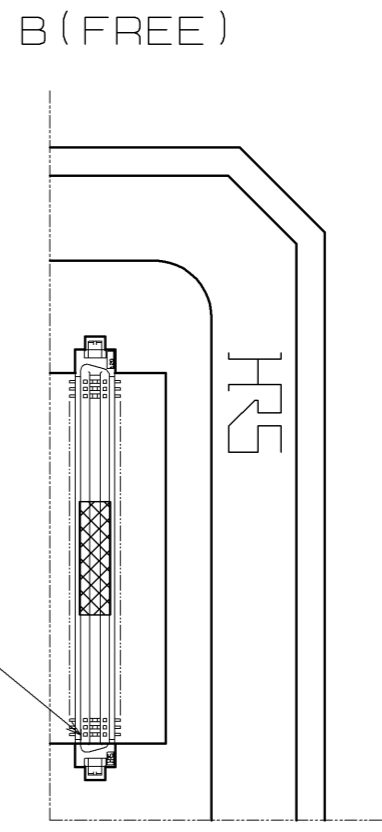
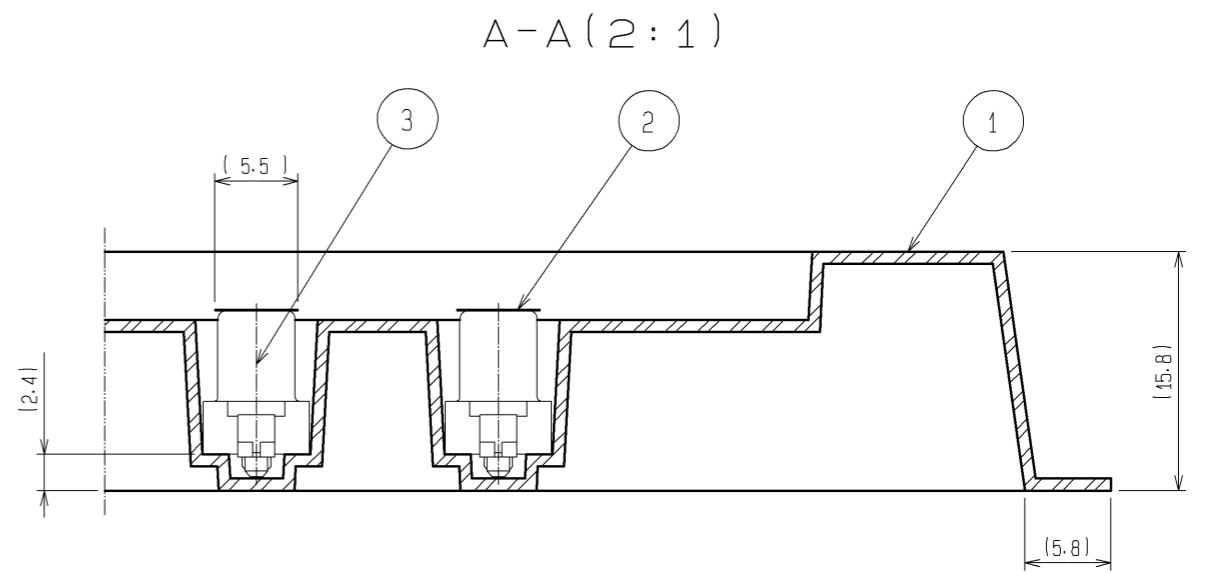
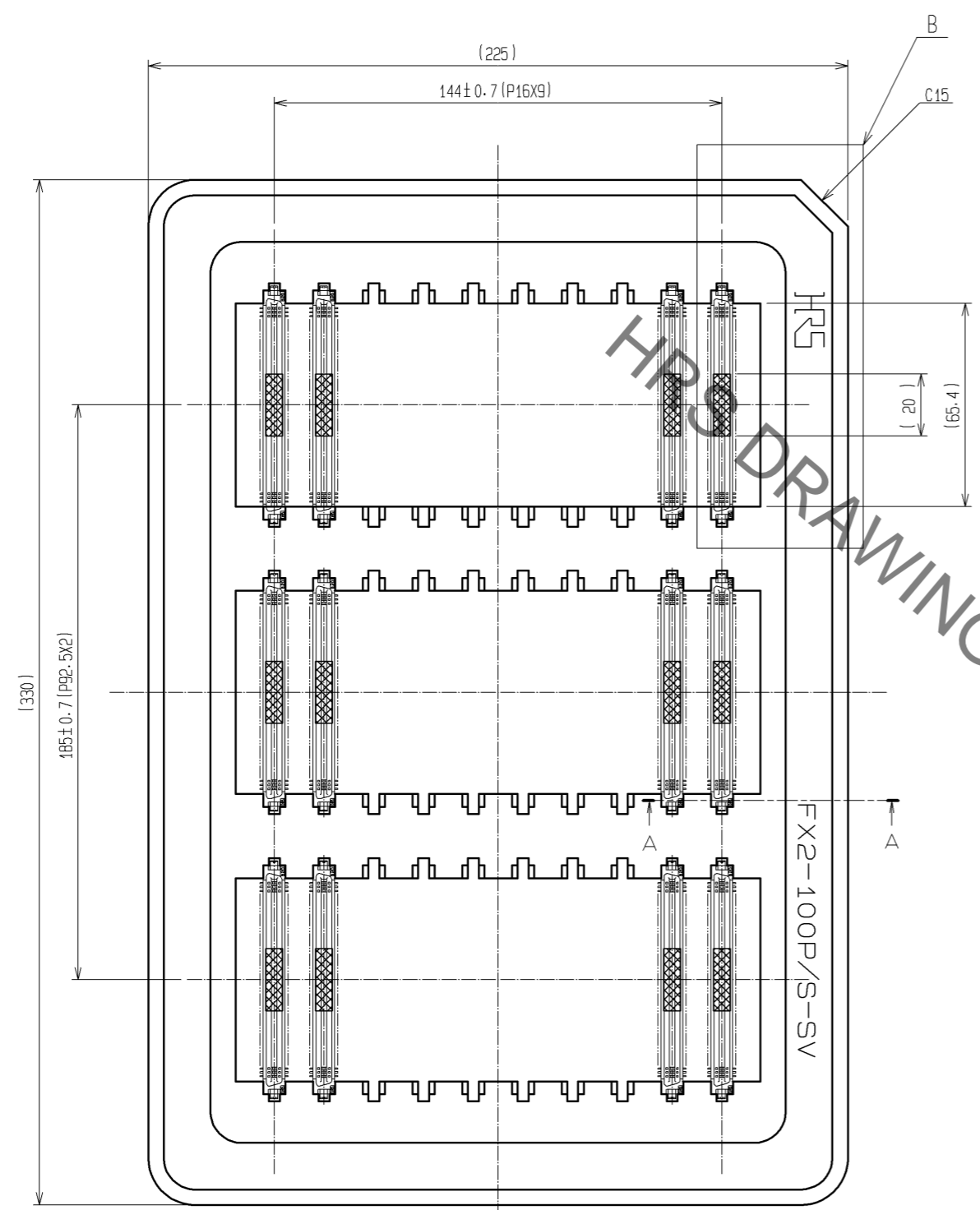
Aug.1.2019 Copyright 2019 HIROSE ELECTRIC CO., LTD. All Rights Reserved.
In case of consideration for using Automotive equipment / device which demand high reliability, kindly contact our sales window correspondents.



3	BLASS	TIN-PLATING	2	PHOSPHOR BRONZE	CONTACT AREA:GOLD 0.2μm min.
1	PPS	LIGHT BROWN (UL94V-0)			LEAD AREA:TIN-PLATING 2μm min.
					UNDER PLATING:NICKEL 1.5μm min.
NO.	MATERIAL	FINISH . REMARKS	NO.	MATERIAL	FINISH . REMARKS
UNITS	mm	SCALE	2 : 1	COUNT	DESCRIPTION OF REVISIONS
					DESIGNED
					CHECKED
					DATE
APPROVED : HS. OKAWA			07.05.31	DRAWING NO. EDC3-082425-23	
CHECED : HS. OZAWA			07.05.31	PART NO. FX2-100S-1.27SVL(96)	
DESIGNED : KT. DOI			07.05.31	CODE NO. CL572-2158-0-96	
DRAWN : TS. MIYAKI			07.05.28		

Aug.1.2019 Copyright 2019 HIROSE ELECTRIC CO., LTD. All Rights Reserved.
In case of consideration for using Automotive equipment / device which demand high reliability, kindly contact our sales window correspondents.

DRAWING FOR PACKING



- NOTE
- 1 1 TRAY:30 CONNECTORS
 - 2 SETTING POSITION OF CONNECTORS IN THE TRAY SHALL BE ARRANGED IN ACCORDANCE WITH DRAWING.
 - 3 REMOVE THE VACUUM PICK-UP TAPE AFTER MOUNTING THE CONNECTOR.
 - 4 THE DIMENSIONS IN PARENTHESES ARE FOR REFERENCE.

2	POLYIMIDE	(TAPE FOR VACUUM PICK-UP)	3	(CONNECTOR)			
1	PS	TRAY					
NO.	MATERIAL	FINISH . REMARKS	NO.	MATERIAL	FINISH . REMARKS		
UNITS	mm	SCALE	COUNT	DESCRIPTION OF REVISIONS	DESIGNED	CHECKED	DATE
		1 : 2	△				
APPROVED : HS. OKAWA		07.05.31	DRAWING NO. EDC3-082425-23				
CHECKED : HS. OZAWA		07.05.31	PART NO. FX2-100S-1.27SVL(96)				
DESIGNED : KT. DOI		07.05.31	CODE NO. CL572-2158-0-96				
DRAWN : TS. MIYAKI		07.05.28					