

MICRO SWITCH

A DIVISION OF HONEYWELL INTERNATIONAL COMPANY
TROY, N.Y. 12182
FED. MFR. CODE 91929

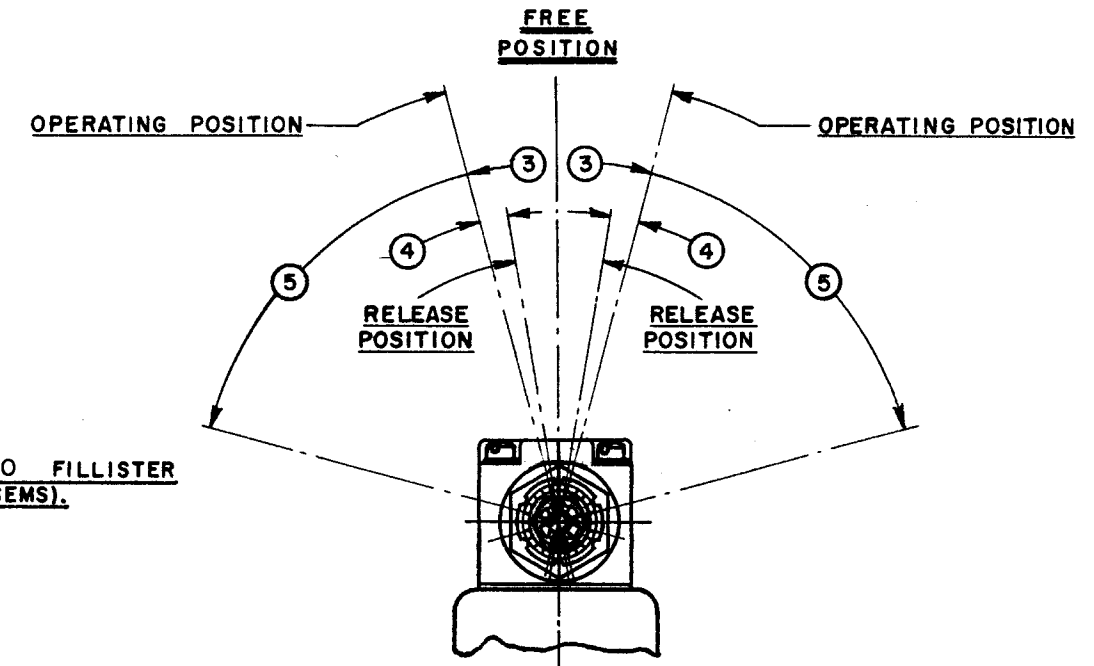
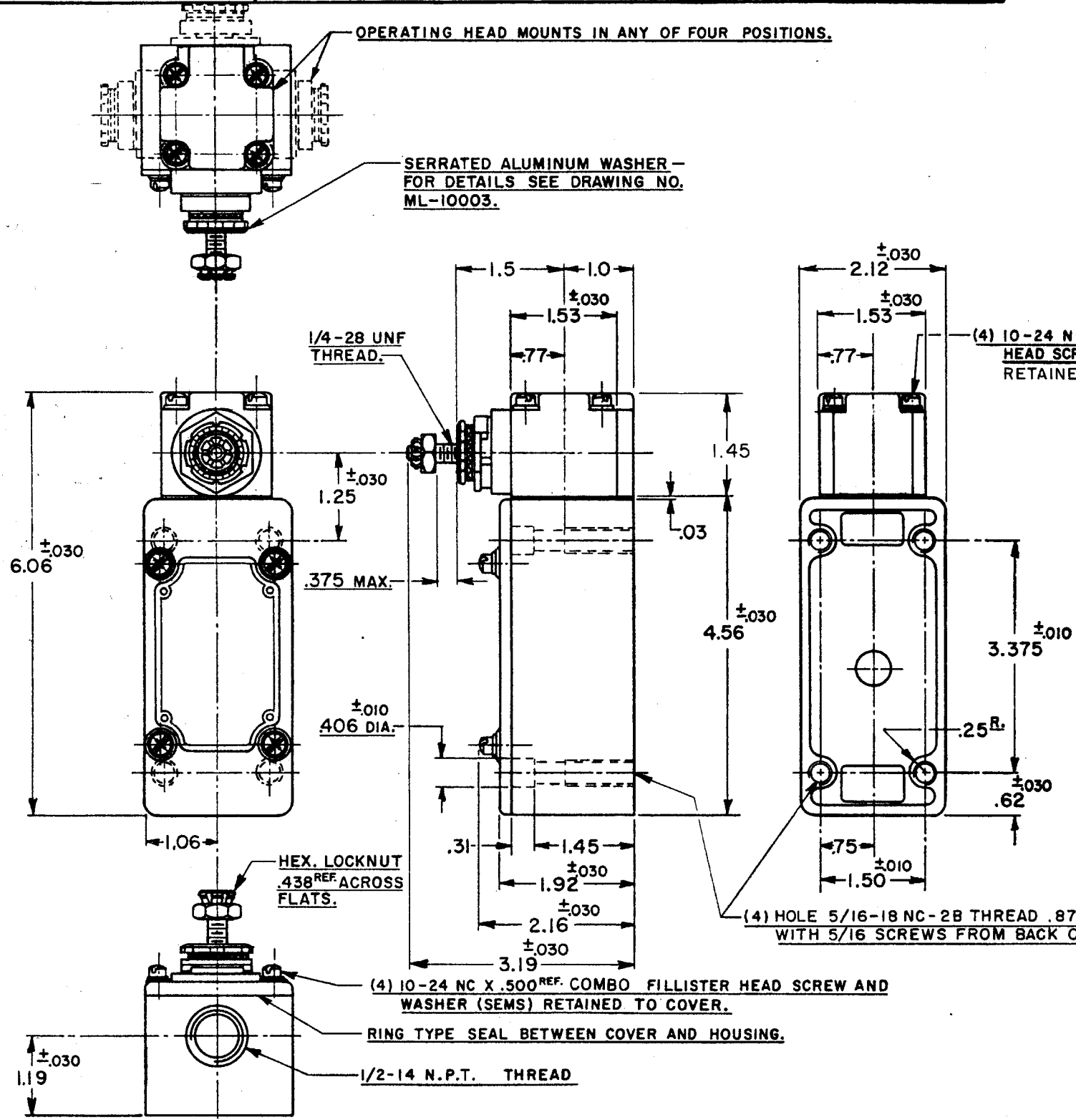
SWITCH-ENCLOSED

CATALOG LISTING
51ML22

THIS DRAWING COVERS A PROPRIETARY ITEM AND IS THE PROPERTY OF MICRO SWITCH, A DIVISION OF HONEYWELL. THIS DRAWING IS NOT TO BE COPIED OR USED WITHOUT THE APPROVAL OF MICRO SWITCH.



74-963 J A P 26 SEPT 83 CHECK C.E.L. 30 SEPT 83 CHECK
DRAWN
J A P 17 DEC 84
G J W 17 APR 93
C 074287
B 055051-B
A 0052194
26 SEPT 83
J A P
M 51ML22
DRAWING NUMBER
SR 4813
RELEASE NO.
REPLACES



- NOTES
- 1 - IT IS ESSENTIAL TO PREVENT ENTRANCE OF HARMFUL AGENTS THRU THE CONDUIT OPENING TO OBTAIN THE FULL BENEFIT OF THE SEALED CONSTRUCTION PROVIDED IN THIS UNIT
 - 2 - SWITCH IS ASSEMBLED FOR ACTUATION IN CLOCKWISE DIRECTION
 - 3 - TO CONVERT SWITCH FOR ACTUATION IN THE COUNTER-CLOCKWISE DIRECTION ONLY, REMOVE THE HEAD AND SLIDE THE CAM TOWARD THE REAR OF THE HEAD SUFFICIENTLY TO DISENGAGE FROM THE FLATS ON THE SHAFT. ROTATE THE CAM 180° AND RE-ENGAGE THE CAM WITH THE FLATS ON THE SHAFT
 - 4 - SHAFT MAY BE ADJUSTED TO ACTUATE THE SWITCH IN THE CLOCKWISE DIRECTION ONLY, OR THE COUNTER-CLOCKWISE DIRECTION ONLY.

CHARACTERISTICS	ELECTRICAL DATA		SCALE 1/2 TO 1
OPERATING TORQUE----- 25 OZ. IN. MAX.	CONTACT ARRANGEMENT	BREAK DISTANCE	DO NOT SCALE PRINT
FULL OVERTRAVEL TORQUE--- 35 OZ. IN. MAX.	S. P. D. T.	.020 MIN.	
RELEASE TORQUE----- 4 OZ. IN. MIN.	20 A-120, 240, 480 OR 600 VAC; 3/4 HP-120 VAC, 1 1/2 H.P.-240 VAC; 1/2 A-115 VDC, 1/4 A-230 VDC PILOT DUTY RATING: 600 VAC MAX.		UNLESS OTHERWISE SPECIFIED DIMENSIONS ARE IN INCHES TOLERANCES ARE:
PRETRAVEL----- ③ 12° MAX.			ONE PLACE (.0) ±.030
DIFFERENTIAL TRAVEL----- ④ 5° MAX.			TWO PLACE (.00) ±.015
OVERTRAVEL----- ⑤ 60° MIN.			THREE PLACE (.000) ±.008
SWITCH-BASIC REPLACEMENT----- 1MK5			ANGLES ±
			WEIGHT