

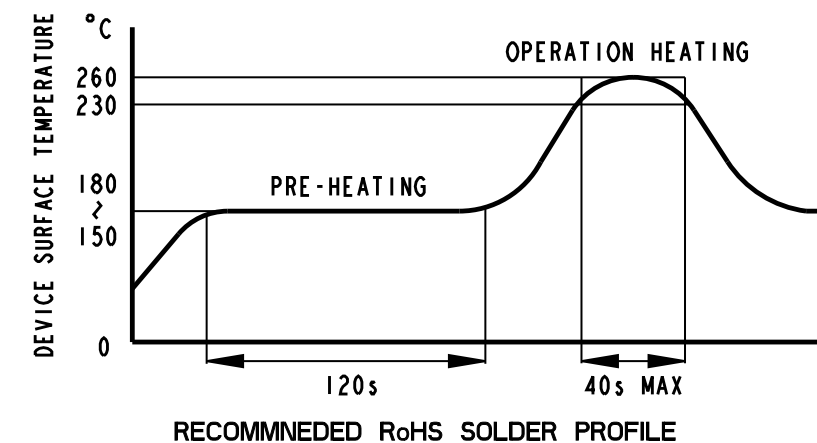
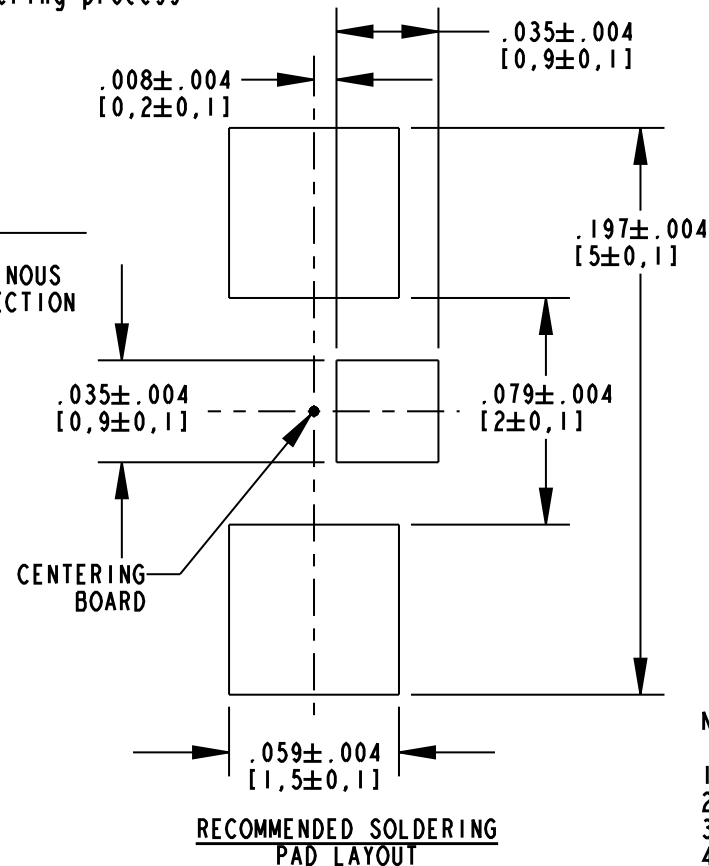
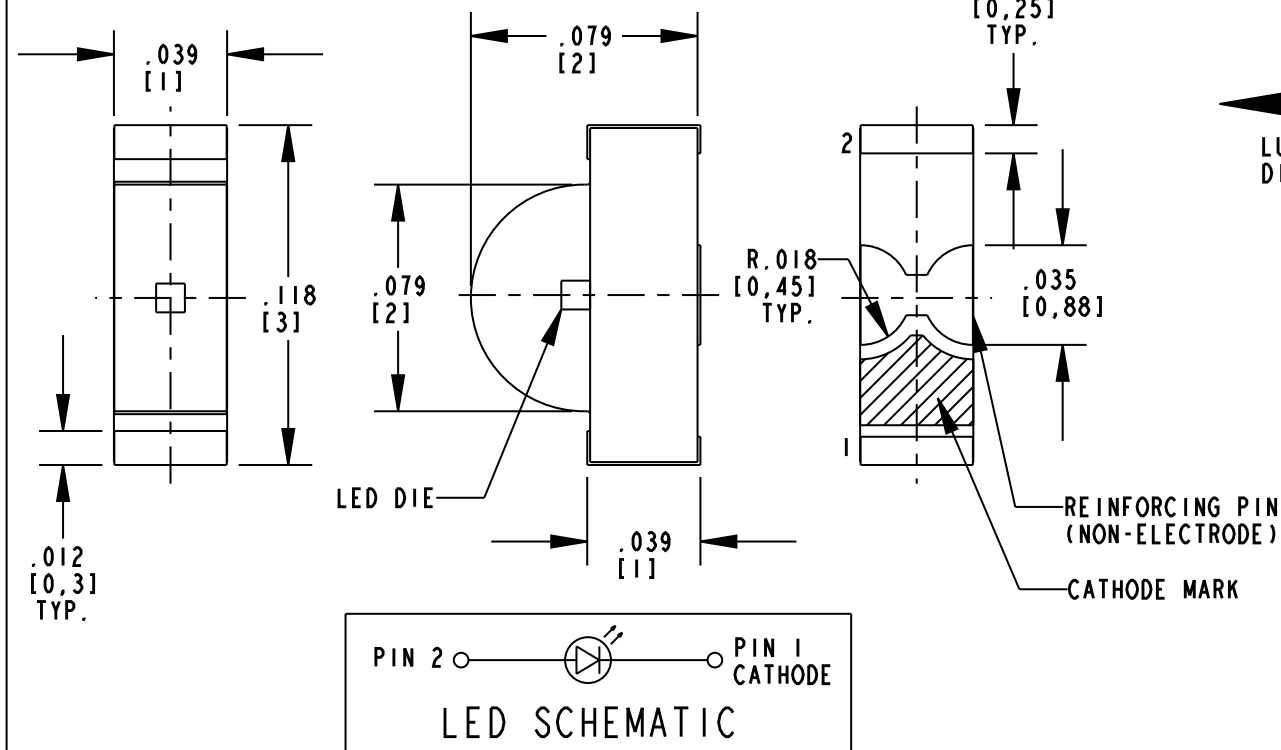
DIALIGHT PART NUMBER	LED COLOR
597-2002-402F, -407F	AllnGaP RED
597-2111-402F, -407F	GaAlAs RED
597-2201-402F, -407F	GaAsP/GaP AMBER
597-2212-402F, -407F	AllnGaP ORANGE
597-2222-402F, -407F	AllnGaP AMBER
597-2311-402F, -407F	GaP GREEN
597-2401-402F, -407F	GaAsP/GaP YELLOW

RoHS COMPLIANT 597-2XXX-40XF
 Part Numbers with the "F" suffix ending are RoHS Compliant.
 For example: 597-2002-402F
 Reel and bag packaging are marked with "RoHS Compliant" label or equivalent markings. These parts can be used with RoHS reflow profile. Parts can be wave soldered, dip soldered or hand soldered using typical lead-free soldering process with max 260°C temp. for 5 sec.



ATTENTION:
 OBSERVE PRECAUTIONS FOR
 HANDLING ELECTROSTATIC
 SENSITIVE DEVICES

REV	ECN NO	REVISIONS	DRN	CKD	APP	DATE
A		NEW RELEASE	AJF	KLJ	NO	7-1-10

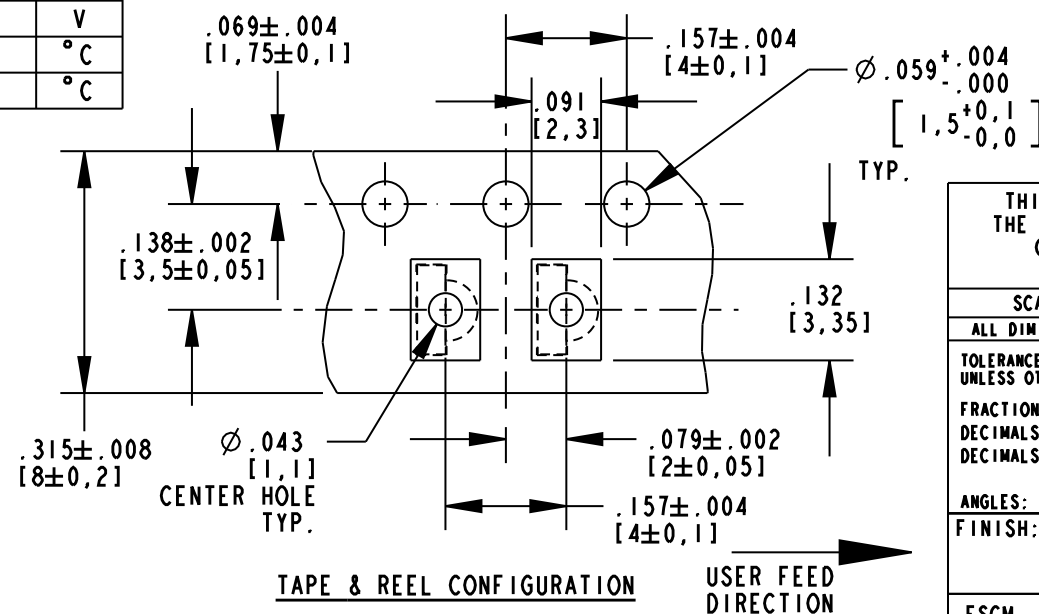


NOTES:

- EPOXY COLOR: WATER CLEAR.
- MOISTURE SENSITIVITY LEVEL: 3.
- TAPE & REEL AS PER EIA STANDARD 481-1-A; CATHODE SIDE TOWARDS SPROCKET.
- TAPE & REEL LEDS MAY REQUIRE RE-TAPING AFTER TWELVE (12) MONTHS.
- PIN NUMBERS ARE FOR REFERENCE ONLY, DESIGNATION NON-EXISTENT ON PART.
- ...-402F SUFFIX MEANS PARTS PACKAGED ON A 20 PCS SAMPLE STRIP.
...-407F SUFFIX MEANS PARTS PACKAGED ON A 7" [Ø180mm] REEL, 3,000 PCS/REEL.
- DIALIGHT PART NUMBERS:
597-2002-402F, -407F; 597-2111-402F, -407F; 597-2201-402F, -407F;
597-2212-402F, -407F; 597-2222-402F, -407F; 597-2311-402F, -407F;
597-2401-402F, -407F.
- PACKAGING TO INCLUDE LABEL CONTAINING DIALIGHT P/N, DATE CODE/LOT NO., LUMINOUS INTENSITY AND COLOR BINS, QTY/REEL, AND COUNTRY OF ORIGIN.
- THIS ASSEMBLY CONTAINS ELECTROSTATIC DISCHARGE SENSITIVE DEVICES (ESDS). MAINTAIN ALL PRECAUTIONARY MEASURES DURING ASSEMBLY, HANDLING, AND STORAGE IN ACCORDANCE WITH IPC-A-610.

ABSOLUTE MAXIMUM RATINGS AT 25°C AMBIENT	LED COLOR							UNITS	
	AllnGaP RED	GaAlAs RED	GaAsP/GaP AMBER	AllnGaP ORANGE	AllnGaP AMBER	GaP GREEN	GaAsP/GaP YELLOW		
POWER DISSIPATION	81	57.5	70	81	81	70	70	mW	
CONTINUOUS FORWARD CURRENT	30	25	25	30	30	25	25	mA	
PEAK FORWARD CURRENT (1/10 DUTY CYCLE, 1 ms PULSE WIDTH)	100	60	60	100	100	60	60	mA	
DERATE LINEARLY FROM 25°C	0.43	0.36	0.36	0.43	0.43	0.36	0.36	mA/°C	
REVERSE VOLTAGE	5	4	4	5	5	4	4	V	
OPERATING TEMPERATURE	-40 TO +85		-30 TO +85		-40 TO +85		-30 TO +85		°C
STORAGE TEMPERATURE	-40 TO +100							°C	

OPERATING CHARACTERISTICS AT 25°C AMBIENT								
COLOR	LUMINOUS INTENSITY (mcd) @ If=20mA		FORWARD VOLTAGE (V) @ If=20mA		REVERSE CURRENT (µA)	DOMINANT WAVELENGTH (nm)	PEAK WAVELENGTH (nm)	VIEWING ANGLE (DEG.)
	MIN	TYP	TYP	MAX	MAX	TYP	TYP	TYP
AllnGaP RED	25.0	50.0	1.9	2.4	100 @ Vr=5V	626	630	130
GaAlAs RED	6.2	12.4	1.7	2.3	100 @ Vr=4V	647	660	130
GaAsP/GaP AMBER	1.5	3.0	2.2	2.8	100 @ Vr=4V	606	605	130
AllnGaP ORANGE	25.0	65.0	1.9	2.4	100 @ Vr=5V	605	609	130
AllnGaP AMBER	25.0	65.0	1.9	2.4	100 @ Vr=5V	590	592	130
GaP GREEN	2.6	5.2	2.1	2.8	100 @ Vr=4V	567	560	130
GaAsP/GaP YELLOW	1.5	3.0	2.2	2.8	100 @ Vr=4V	590	580	130



THIS DRAWING AND THE CONTENTS HEREIN ARE CONFIDENTIAL AND THE SOLE PROPERTY OF DIALIGHT. REPRODUCTION OF THIS DRAWING OR CONSTRUCTION OF ANY PARTS WITHIN THIS DRAWING ARE FORBIDDEN WITHOUT THE WRITTEN CONSENT OF DIALIGHT.

SCALE: 15.000	DRAWING NUMBER	REV
ALL DIM'S IN: INCHES (MM)	C-17850	A
TOLERANCES: UNLESS OTHERWISE SPECIFIED	TITLE 1208 SMT RIGHT ANGLE LED RoHS COMPLIANT	
FRACTIONS: ±1/64 DECIMALS (.XX): ±.02 DECIMALS (.XXX): ±.010	MATERIAL	
ANGLES: ±1°	FINISH:	
FSCM 83330	Dialight 1501 ROUTE 34 SOUTH FARMINGDALE, NJ 07727	
SHEET 1 OF 1	FAMILY TABLE:	