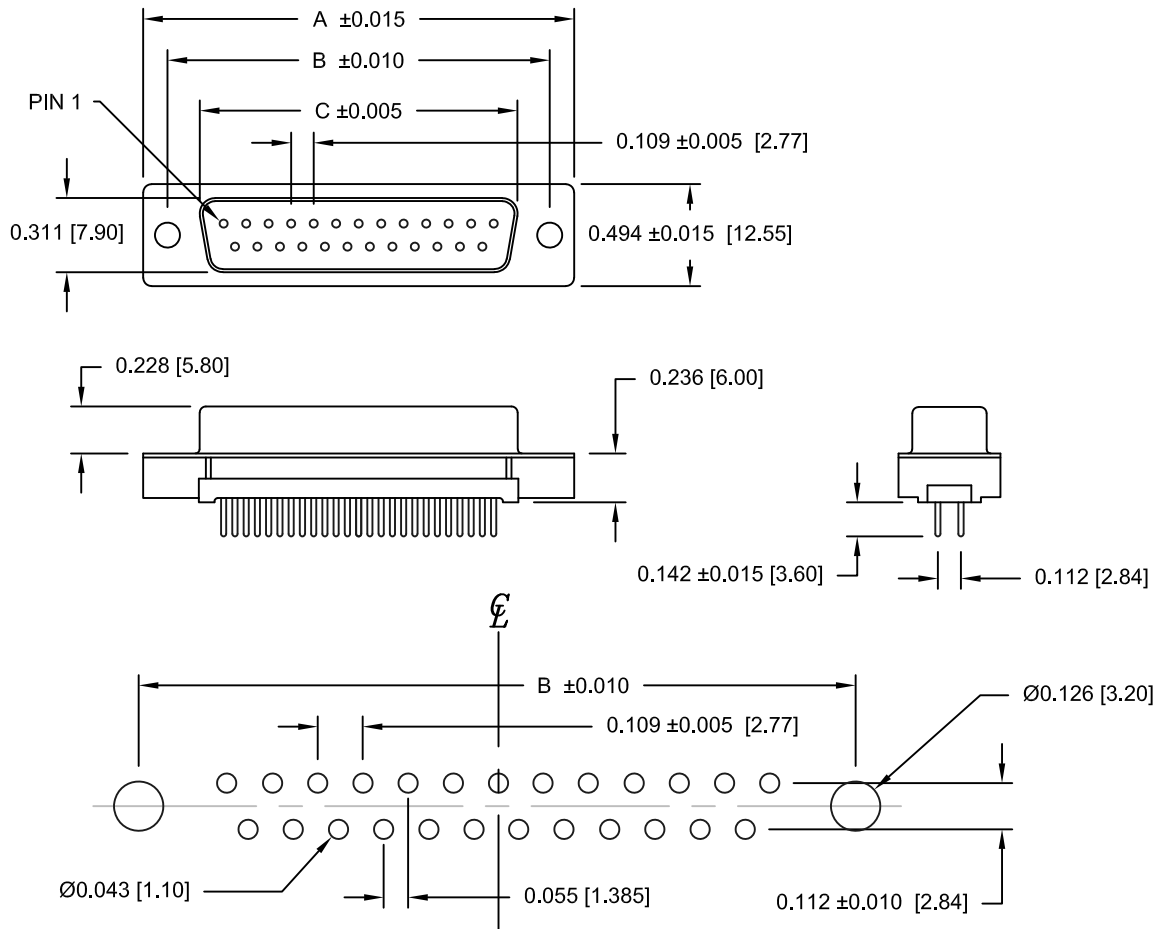


DESCRIPTION: VERTICAL MOUNT - FEMALE - LOW PROFILE - PLASTIC BACK



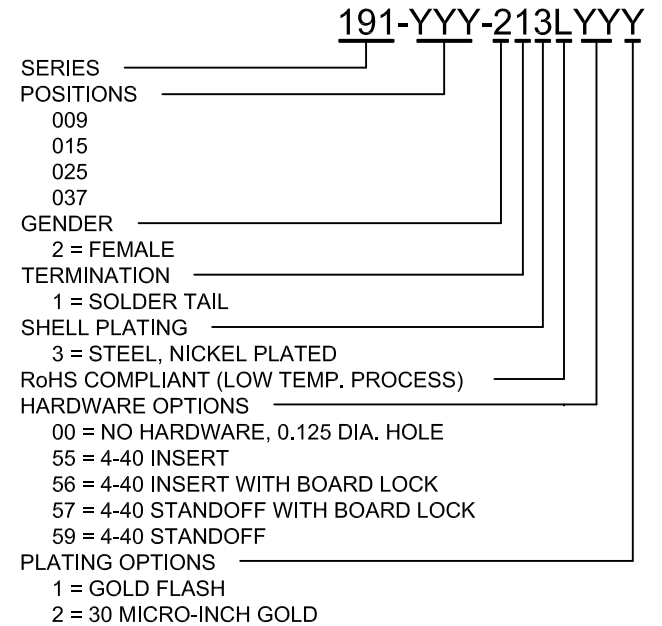
RECOMMENDED PCB LAYOUT

MATERIAL:

INSULATOR: THERMOPLASTIC POLYESTER, UL94-0, CHEMICAL RESISTANCE, BLACK, 230°C PROCESS TEMP.
 SHELL: STEEL, NICKEL PLATED
 CONTACT: PHOSPHOR BRONZE, GOLD FLASH OR 30 MICRO-INCH IN MATING AREA, TIN PLATED ON TAIL ENDS

ELECTRICAL:

CURRENT RATING: 3 AMPS
 WITHSTANDING VOLTAGE: 250 VAC (RMS) MAX
 INSULATION RESISTANCE: 5,000 MOhms Min.
 CONTACT RESISTANCE: 25 mOhms Max.
 WORKING TEMPERATURE: -55° TO +85°C



NUMBER OF CONTACTS	"A" Inch (mm)	"B" Inch (mm)	"C" Inch (mm)
9	1.213(30.81)	.984 (24.99)	.643 (16.33)
15	1.543(39.19)	1.312 (33.32)	.971 (24.66)
25	2.088(53.04)	1.852 (47.04)	1.511 (38.38)
37	2.729(69.32)	2.500 (63.50)	2.159 (54.84)

RoHS COMPLIANT

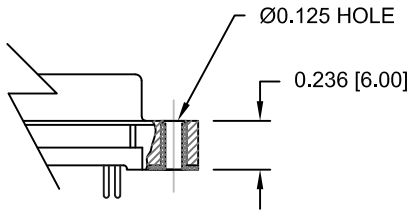
UNITS = INCHES [MM]

DO NOT SCALE FROM DRAWING

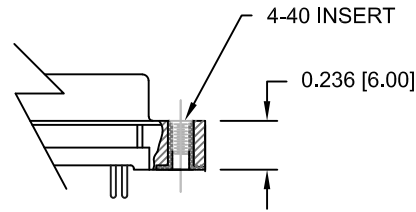
	THESE DRAWINGS AND SPECIFICATIONS ARE THE PROPERTY OF NorComp AND SHALL NOT BE REPRODUCED, COPIED OR USED AS THE BASIS FOR THE MANUFACTURE OF SALE OF APPARATUS WITHOUT WRITTEN PERMISSION.		DRAWN: PAM JENKINS	DATE: 8-22-05
			SCALE: NTS	SHEET 1 OF 2
			DWG NO. 191-YYY-213LYYY	

DESCRIPTION: 191 SERIES HARDWARE OPTIONS

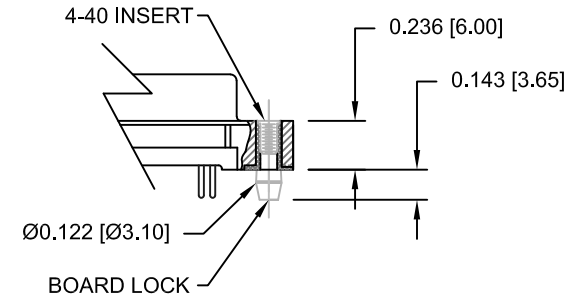
00 = .125 DIA. HOLE



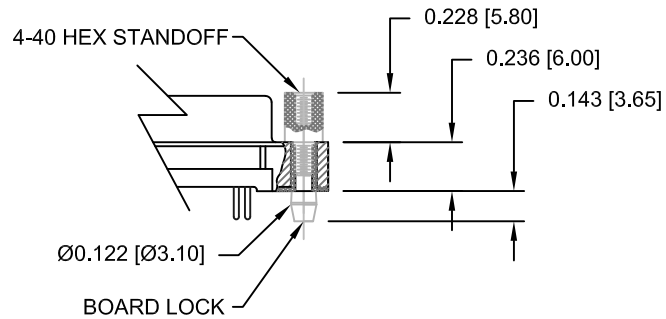
55 = 4-40 INSERT



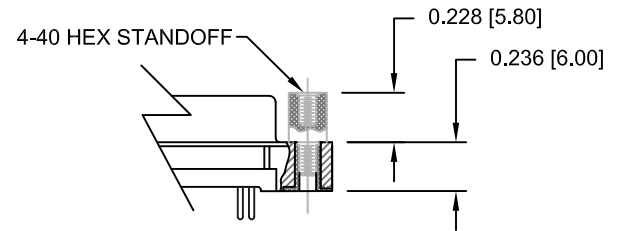
56 = 4-40 INSERT WITH BOARD LOCK



57 = 4-40 STANDOFF WITH BOARD LOCKS



59 = 4-40 STANDOFF



DO NOT SCALE FROM DRAWING



THESE DRAWINGS AND SPECIFICATIONS ARE THE PROPERTY OF NorComp AND SHALL NOT BE REPRODUCED, COPIED OR USED AS THE BASIS FOR THE MANUFACTURE OF SALE OF APPARATUS WITHOUT WRITTEN PERMISSION.

DRAWN: PAM JENKINS

DATE: 8-22-05

NorComp

SCALE: NTS SHEET 2 OF 2 REV 7

DWG NO. 191-YYY-213LYYY

RoHS COMPLIANT