

## Surge protection device - C-UFB- 5DC/E - 2782300

Please be informed that the data shown in this PDF Document is generated from our Online Catalog. Please find the complete data in the user's documentation. Our General Terms of Use for Downloads are valid (<http://download.phoenixcontact.com>)



Attachment plug with surge voltage coarse and fine protection, for coaxial signal interfaces with floating shield, signal voltage 5 V. Connection: BNC female/male connector

### Why buy this product

- Ground connection via separately led cable
- For insertion in the cable



### Key commercial data

Packing unit	1
Minimum order quantity	1
Catalog page	Page 174 (TT-2011)
GTIN	 4 017918 069445
Custom tariff number	85363010
Country of origin	GERMANY

### Technical data

#### General

Housing material	Aluminum
Color	black
Standards for air and creepage distances	VDE 0110-1
Standards for air and creepage distances	IEC 60664-1
Total surge current (8/20) $\mu$ s	20 kA
Ambient temperature (operation)	-40 °C ... 80 °C
Mounting type	Connection-specific intermediate plugging
Design	Attachment plug
Degree of protection	IP20
Direction of action	Line-Shield/Earth Ground
Width	25.4 mm
Height	93 mm
Length	25.4 mm

## Surge protection device - C-UFB- 5DC/E - 2782300

### Technical data

#### Protective circuit

IEC category	C2
IEC category	C3
IEC category	D1
Maximum continuous operating voltage UC	5 V DC
Maximum continuous voltage UC (wire-shield)	5 V DC
Nominal current I <sub>N</sub>	185 mA (25°C)
Operating effective current I <sub>C</sub> at UC	≤ 300 μA
Ground conductor current I <sub>PE</sub>	≤ 2 μA
Nominal discharge surge current I <sub>n</sub> (8/20) μs (Core-Earth)	10 kA
Nominal discharge surge current I <sub>n</sub> (8/20) μs (Core-Shield)	10 kA
Total surge current (8/20) μs	20 kA
Output voltage limitation at 1 kV/μs (Core-Earth) spike	≤ 500 V
Output voltage limitation at 1 kV/μs (Core-Shield) spike	≤ 150 V
Output voltage limitation at 1 kV/μs (Core-Earth) static	≤ 500 V
Output voltage limitation at 1 kV/μs (Core-Shield) static	≤ 13 V
Residual voltage at I <sub>n</sub> , (conductor-shield)	≤ 10 V
Protection level UP (Core-Earth)	≤ 500 V (C1 - 1 kV/500 A)
Protection level UP (Core-Shield)	≤ 150 V (C1 - 1 kV/500 A)
Response time t <sub>A</sub> (Core-Earth)	≤ 100 ns
Response time t <sub>A</sub> (Core-GND)	≤ 500 ns
Input attenuation a <sub>E</sub> , asym.	Typ. 2 dB (≤ 20 MHz)
Cut-off frequency f <sub>g</sub> (3 dB), asym. (shield) in 50 Ohm system	Typ. 90 MHz
Surge carrying capacity in acc. with IEC 61643-21 (Core-Earth)	C2 (10 kV/5 kA)
Surge carrying capacity in acc. with IEC 61643-21 (Core-Earth)	D1 (2.5 kA)

#### Connection data

Connection method	BNC 50 Ω
Connection type IN	BNC socket
Connection type OUT	BNC plug

#### Connection, equipotential bonding

Connection method	PVC litz wire
-------------------	---------------

#### Connection, protective circuit

Standards/regulations	IEC 61643-21
-----------------------	--------------

### Classifications

#### eclass

eCl@ss 4.0	27140201
eCl@ss 4.1	27130801
eCl@ss 5.0	27130801
eCl@ss 5.1	27130801
eCl@ss 6.0	27130807

# Surge protection device - C-UFB- 5DC/E - 2782300

## Classifications

### eclass

eCl@ss 7.0	27130807
------------	----------

### etim

ETIM 2.0	EC000943
ETIM 3.0	EC000943
ETIM 4.0	EC000943

### unspsc

UNSPSC 6.01	30212010
UNSPSC 7.0901	39121610
UNSPSC 11	39121610
UNSPSC 12.01	39121610
UNSPSC 13.2	39121620

## Approvals

### Approvals

---

Approvals

GOST

---

Ex Approvals

---

Approvals submitted

---

### Approval details

GOST
------

## Accessories

Accessories

Plug/Adapter

Connector/Adapter - BNC-V 50 - 2805041



BNC connector, single-level, for mounting on NS 32 or NS 35/7.5, wave impedance: 50 Ohm

# Surge protection device - C-UFB- 5DC/E - 2782300

## Accessories

---

Connector/Adapter - BNC-DV 50 - 2805038

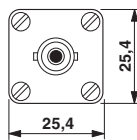
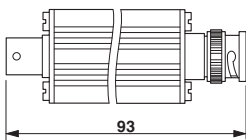


BNC connector, double-level, for mounting on NS 32 or NS 35/7.5, wave impedance: 50 Ohm

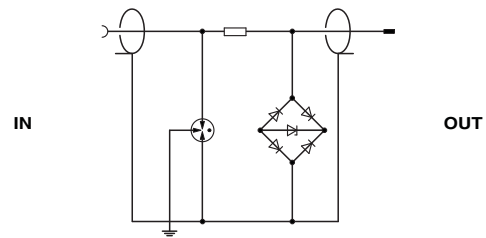
---

## Drawings

Dimensioned drawing



Circuit diagram



# Surge protection device - C-UFB- 5DC/E - 2782300

Diagram

