



Model No.DN-3021-1

© All rights reserved.

All trade names are registered trademarks of respective manufacturers listed.
The Bluetooth name and the Bluetooth trademarks are owned by Bluetooth SIG, Inc.
This manual may not be copied in any media or form without the written consent of original maker.

WELCOME

Thank you for your purchase of the Bluetooth USB Adapter. Featuring Bluetooth wireless technology, Bluetooth USB Adapter creates cable-free connections between your PCs and other Bluetooth devices. Bluetooth USB Adapter is compliant with Bluetooth V2.1 specification and is compatible with all Bluetooth certified devices.

Features

- Compliant with Bluetooth standard version 2.1.
- Support for Microsoft Windows XP, Vista and 7.
- Easy operation and setting up.

System requirements

- Processor : Intel Celeron / Pentium III, IV; AMD Duron / Athlon
- Operating System : Microsoft Windows XP / Vista / 7.
- System memory : 32MB at least
- Hard Drive Free Space : 100MB

Before you start

Please remove any previous version of Bluetooth software existing in your system.

The remove procedures are as follows:

- Step 1 : Click "Start" --> "Settings" then select "Control Panel".
- Step 2 : In the Control Panel window, double click "Add or Remove Programs" icon..
- Step 3 : Find out the Bluetooth Software item then click "remove" to remove it.

Install driver in Windows XP/ Vista

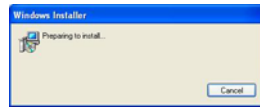
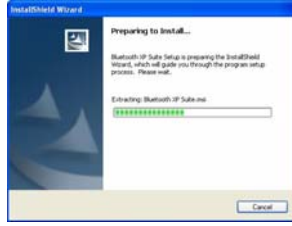
(Please don't insert the Bluetooth USB adapter before installation is finished)

1. Insert the CD containing the Bluetooth Suite into the CD drive, the Installation Wizard will start automatically. (Double Click the **autorun.exe** file if the CD doesn't execute automatically)

2. Click **OK** to continue or select the language for this installation.



3. Preparing to Install



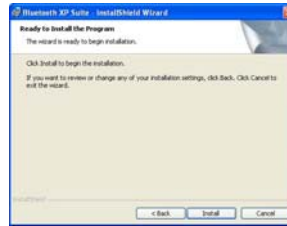
4. Click **Next** to continue.



5. Click **Next** to install to this folder, or click **Change...** to install to a different folder.



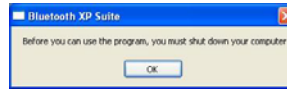
6. Click **Install** to begin installation.




7. Click **Finish** to finish installation.



8. Click **OK** to re-start your computer.

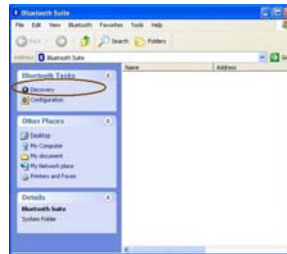


Start to use Bluetooth service

1. Insert the Bluetooth USB Adapter into any USB port of your PC.
2. Double click on the Bluetooth icon  on your desktop.

3. Click "Discovery" item on the top left panel of the window.

De-select the option "Show this message in the future" in the Reminder window then click **OK**.



4. Right click to select one of the Bluetooth devices to link and click **Pair**, then input the security code.

For each device **Pair** is needed at first time only and you can link with any of Bluetooth device which has a tick sign beside it.

