

1

2

3

4

A

B

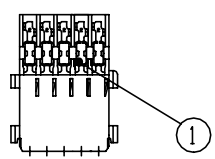
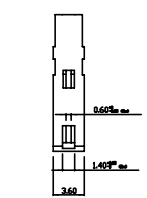
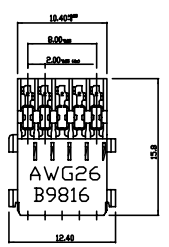
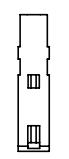
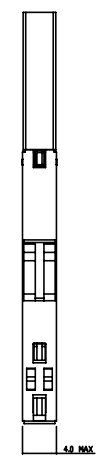
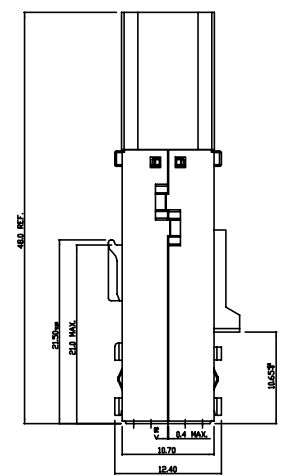
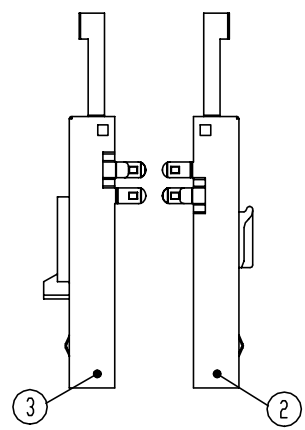
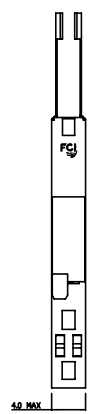
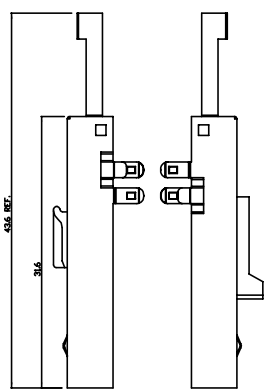
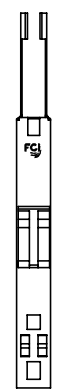
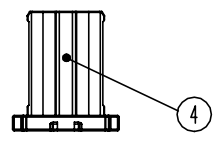
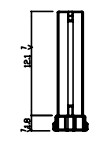
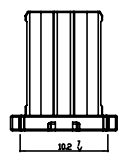
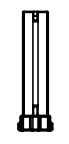
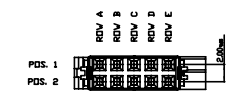
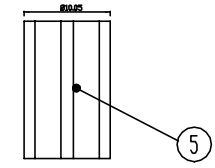
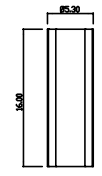
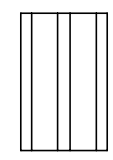
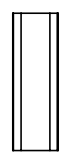
C

D

B

C

D



PERFORMANCE CHARACTERISTICS:

- VOLTAGE RATING : 250 VAC.
- CURRENT RATING : 1.0 A AT 70°C.
- INSULATION RESISTANCE : 10⁹ Ω MIN. AFTER TEST.
- DIELECTRIC WITHSTANDING VOLTAGE : 1000 V.
- CONTACT RESISTANCE : 20 mΩ MAX. AFTER TEST.
- OPERATING TEMPERATURE : -55°C TO +125°C.
- INSERTION FORCE : 0.275 N MAX. PER CONTACT.
- WITHDRAWAL FORCE : 0.15 N MIN. PER CONTACT.

MATERIALS:

- TERMINAL BLOCK : GLASS REINFORCED THERMOPLASTIC UL94-V0.
- CONTACTS : PHOSPHOR BRONZE.
- PERFORMANCE : TELCORDIA GD.
- SHIELDING COVER: STAINLESS STEEL
- INNER FERRULE : Sn PLATED E-Cu
- OUTER FERRULE : Sn PLATED E-Cu

THE APPLICATION SPECIFICATION NO. IGS-20-096

WIRE CHARACTERISTICS:

- INSULATION DIAMETER L20 MIN. MAX.

CABLE CHARACTERISTICS:

- SEE DRAWING IGA 200644/001

PART NUMBERS:

- HM2CPC0000L/UF : CONNECTOR FOR WIRE SIZE AWG26/ANG20
- HM2CPC0000L/UF : CONNECTOR FOR WIRE SIZE AWG28

Item	Qty	Description
5	1	2XS POS. SHIELDED HME OUTER FERRULE
4	1	2XS POS. SHIELDED HME INNER FERRULE
3	1	2XS POS. SHIELDED HME COVER PART (POLARISATION SIDE)
2	1	2XS POS. SHIELDED HME COVER PART (LOCKING SIDE)
1	1	2XS POS. STACKABLE CABLE CONN. WITHOUT COVER

Notes:

- WHEN PART NUMBER WITH "LF" SUFFIX, THEN THE LF CONTACTS MUST BE USED.
- SEE PRODUCT WITH "LF" SUFFIX MEETS EUROPEAN UNION DIRECTIVES AND OTHER COUNTRY REGULATIONS AS DESCRIBED IN IGS-20-096.



Copyright FCI.

1

2

3

4

mat'l. code				tolerances unless otherwise specified		CUSTOMER COPY		FCI		www.fciconnect.com		
ltr	ecr no	dr	date	linear	X±0.50	projection	title	2XS POS. HM2 STACKABLE CABLE CONN WITH COVER				
A	-	KN	21/01/2003		0.X±0.20							
B	DG05-0244	CLU	26/07/2005		0.XX±0.10							
C	DG08-0117	Nickor	18/03/2008	angles	0° ±2°	MM		product family		code		
D	ELX-N-004867	AZH	03/08/2011	dr	A.Janssens	21/12/1998	←		size		dwg no	
				enr	G.Droesbeke	25/06/1999	→		scale		sheet	
				chr	G.Droesbeke	25/06/1999	1:1		A4		BSE202594001	
				appd	G.Droesbeke	25/06/1999					1 of 1	
sheet index	revision sheet	D	1									