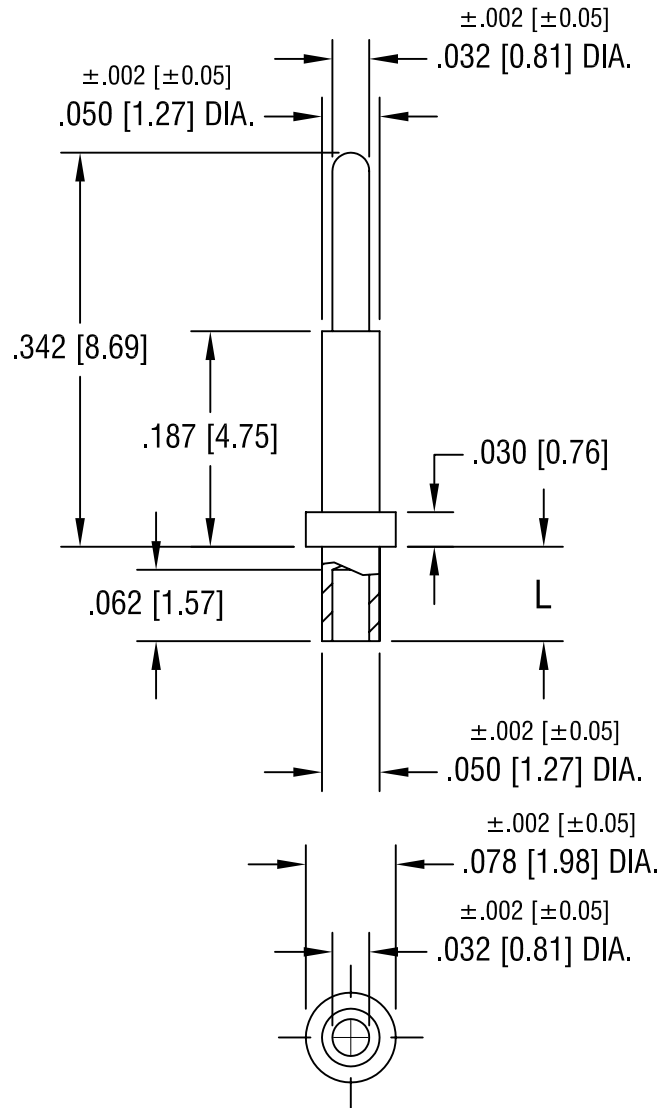


THIS DOCUMENT IS THE PROPERTY OF KEYSTONE ELECTRONICS CORP. AND SHALL NOT BE REPRODUCED, DISTRIBUTED OR USED AS A BASIS FOR MANUFACTURE WITHOUT PRIOR WRITTEN PERMISSION FROM KEYSTONE ELECTRONICS CORP.



PART NO.	'L' DIM.
1354-1	.051 [1.30]
1354-2	.082 [2.08]

KEYSTONE ELECTRONICS CORP.			
ASTORIA, N.Y. 11105-2017			
PART NAME MICRO PIN, SWAGE MOUNT			
MATERIAL BRASS			
FINISH GOLD PLATE		DRN BY BOONE	DATE 2.22.07
		APP'D LN	SCALE 6X
TOLERANCES DECIMAL ANGULAR	INCH [MM] ±.005 [±0.15] ± 1°	CODE C/M	DWG NO. 1354-
UNLESS OTHERWISE SPECIFIED			

DATE	DESCRIPTION	REV.