



CRIMPING SPECIFICATION



LANGUAGE

JAPANESE
ENGLISH

圧着仕様書
CRIMPING SPECIFICATION

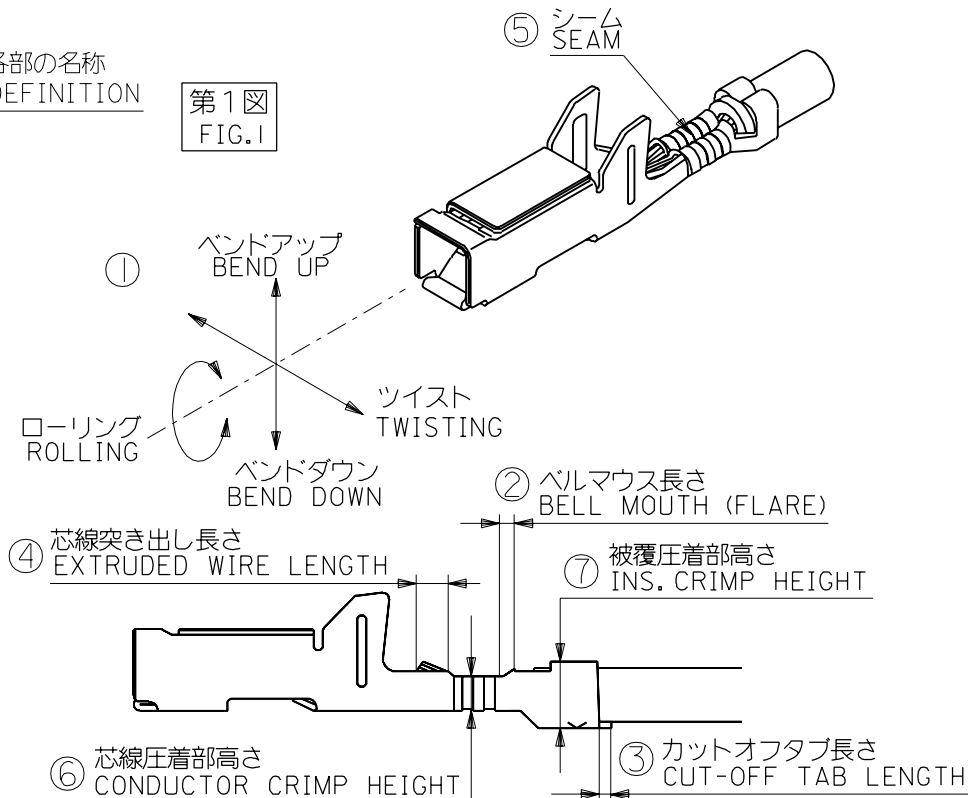
製品名
PRODUCT NAME 4.0 WIRE TO WIRE CRIMP RECEPTACLE

1. 適用範囲
SCOPE

本仕様書は下記のターミナルの圧着に伴う諸元について規定する。
THIS STANDARD SPECIFIES THE DIMENSIONS AFTER CRIMPING OF THE TERMINALS UNDERMENTIONED.

ターミナル番号 PARTS NO.	適用電線範囲 WIRE SIZE		絶縁被覆外径 INSULATION DIA.
	—#—		
50695-8*00	AVS-0.5, AVS-0.5f, AVSS-0.5		0.56
	AVSS-0.5f, CAVS-0.5, CAVUS [ⓐ] -0.5		
	AVS-0.75f, AVSS-0.75f		0.79
	AVS-0.85, AVSS-0.85, CAVS-0.85		0.88
	CAVUS-0.85 [ⓐ]		

2. 各部の名称
DEFINITION



REV	C						
SHT	1-4						
REVISE ON CAD ONLY				TITLE 4.0 WIRE TO WIRE CRIMP REC. 圧着仕様書			
C	REVISED ECN NO. J2002-3025 '02/06/04 H.KOMATSU			THIS DOCUMENT CONTAINS INFORMATION THAT IS PROPRIETARY TO MOLEX INC. AND SHOULD NOT BE USED WITHOUT WRITTEN PERMISSION			
REV	DESCRIPTION			WRITTEN BY:	CHECKED BY:	APPROVED BY:	DATE: YR/MO/DAY
DESIGN CONTROL	J	STATUS		H.TAMURA	M.SAKANO N.ASAOKA	M.ENOMOTO	'96/11/9
DOCUMENT NO. CS-50695-001				FILE NAME 50695001.S01			SHT NO. 1 OF 4
ES-40000-3999 REV. B		SHEET 1 OF 20	95/MAR/10	EC U5-0926	DOCBORD.DGN LV=55		EN-37C(059) MXJ-55



CRIMPING SPECIFICATION



LANGUAGE

JAPANESE
ENGLISH3. 仕様
SPECIFICATION

第1図の箇所 NO. OF FIG. 1	項目 ITEM	仕様 REQUIREMENT
①	バンドアップ BEND UP	3° 以下 MAX.
	バンドダウン BEND DOWN	3° 以下 MAX.
	ツイスト TWISTING	4° 以下 MAX.
	ローリング ROLLING	6° 以下 MAX.
②	ベルマウス(参考値) BELL MOUTH (REF.)	④ 0.4 ~ 0.65 mm
③	カットオフタブ長さ CUT-OFF TAB LENGTH	0.2 mm 以下 MAX.
④	芯線突き出し長さ EXTRUDED WIRE LENGTH	0.3 ~ 1.5 mm
⑤	シーム SEAM	シームは閉じていること。ただし開きのある場合は芯線の飛び出しのないこと。 SEAM SHALL NOT BE OPENED AND NOT WIRE ALLOWED OUT OF CRIMPING THE AREA.
—//—	絶縁被覆むき長さ(参考値) WIRE STRIP LENGTH(REF.)	3.0 ~ 3.7 mm

4. 圧着条件(第1図の⑥及び⑦)
CONDITIONS(⑥ AND ⑦ OF FIG. 1)

自動車用電線を圧着した際の要件は下記による。

AFTER CRIMPING WIRE FOR AUTOMOBILES, THE CRIMPED AREAS SHOULD BE AS FOLLOWS.

圧着部引張強度は芯線圧着部と被覆圧着部をかしめた状態で行う。但し0.5以上のサイズの電線の場合は、被覆圧着部はかしめない状態で行う。

電線サイズ WIRE SIZE	圧着機番号 CRIMP DIE MODEL NO.	ターミナル 番号 TERMINAL NO.	芯線圧着部 CONDUCTOR (第1図⑥(⑥) OF FIG. 1)		被覆圧着部 INSULATION (第1図⑦(⑦) OF FIG. 1)		圧着部引張強度 CRIMP STRENGTH (N {kgf})	
			工具マーク TOOL MARK	高さ HEIGHT (mm)	工具マーク TOOL MARK	高さ HEIGHT (mm)		
◎ CAVUS-0.5	57367 -3000	50695 -8*00	B	0.97 ④ ~ 1.07	6	◎ ±0.1 2.20	90{9.2} 以上 MIN.	
AVS-0.5, AVS-0.5f AVSS-0.5, AVSS-0.5f CAVS-0.5						±0.1 2.05		
AVS-0.75f, AVSS-0.75f			C	1.04 ④ ~ 1.14		±0.1 2.20		100{10.2} 以上 MIN.
◎ CAVUS-0.85			D	1.07 ④ ~ 1.17		◎ 8		◎ ±0.1 2.05
AVS-0.85, AVSS-0.85 CAVS-0.85	6	±0.1 2.20						

REVISE ON CAD ONLY

TITLE 4.0 WIRE TO WIRE CRIMP REC.
圧着仕様書

C

SEE SHEET 1 OF 4

THIS DOCUMENT CONTAINS INFORMATION THAT IS PROPRIETARY TO
MOLEX INC. AND SHOULD NOT BE USED WITHOUT WRITTEN PERMISSION

REV

DESCRIPTION

DOCUMENT NO.

CS-50695-001

FILE NAME

50695001.S02

SHEET

2 OF 4

ES-40000-3999 REV. B

SHEET 2

95/MAR/10

EC U5-0926

DOCBORD.DGN

LV=56

EN-37-IC(059) MXJ-56



CRIMPING SPECIFICATION



LANGUAGE

JAPANESE
ENGLISH5. 消耗部品一覧表
PERISHABLE PARTS LIST

部品名称 PART NAME		部品番号 PART NO.
アンビル ANVIL	④ ⑤ CAVUS-0.5	④ 57367-2011
	⑥ 上記以外の適用電線 OTHER WIRE SIZE	④ 57367-2001
芯線パンチ COND. PUNCH		④ 57367-2002
被覆パンチ INS. PUNCH	④ ⑤ CAVUS-0.5	④ 57367-2013
	⑥ 上記以外の適用電線 OTHER WIRE SIZE	④ 57367-2003
フローティング シェア FLOATING SHEAR		④ 57095-2002
フロントホルダー FRONT HOLDER		④ 57095-2001

REVISE ON CAD ONLY

TITLE 4.0 WIRE TO WIRE CRIMP REC.
圧着仕様書

C

SEE SHEET 1 OF 4

THIS DOCUMENT CONTAINS INFORMATION THAT IS PROPRIETARY TO
MOLEX INC. AND SHOULD NOT BE USED WITHOUT WRITTEN PERMISSION

REV

DESCRIPTION

DOCUMENT NO.
CS-50695-001FILE NAME SHEET
50695001.S03 3 OF 4ES-40000-3999 REV. B SHEET 2 95/MAR/10 EC U5-0926 DOCBORD.DGN LV=56
EN-37-IC(059) MXJ-56



CRIMPING SPECIFICATION



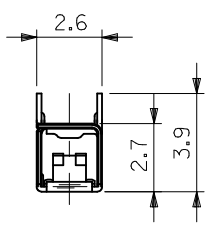
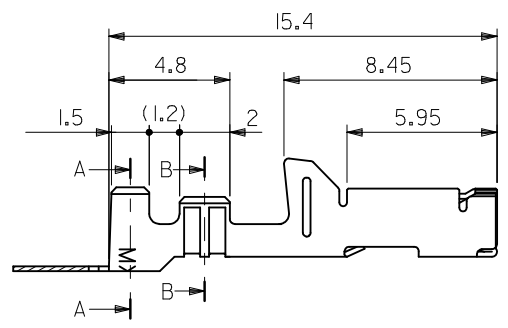
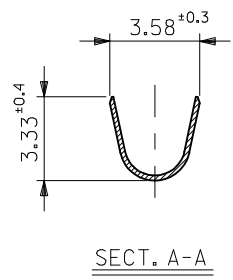
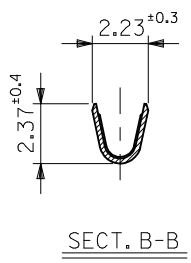
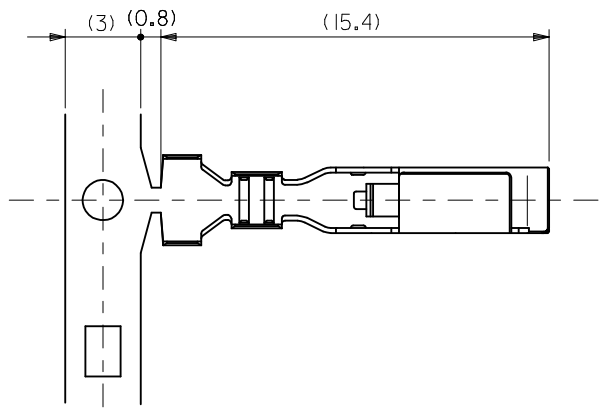
LANGUAGE

JAPANESE
ENGLISH

REV.	REV. RECORD	DATE	EC NO.	WRITTN:	CH'K:
0	PROPOSED	'96/11/09	JA70053	H.TAMURA	M.SAKANO
A	REVISED	'97/03/19	JA70069	H.TAMURA	M.SAKANO
B	REVISED	'99/08/11	JA90119	H.TAMURA	M.SAKANO
C	REDRAWN & REVISED	'02/06/04	J2002-3025	H.KOMATSU	MA.YAMAMOTO

--	--	--	--	--	--

REVISE ON CAD ONLY		TITLE 4.0 WIRE TO WIRE CRIMP REC.			
C	SEE SHEET 1 OF 4	压着仕様書			
REV	DESCRIPTION	THIS DOCUMENT CONTAINS INFORMATION THAT IS PROPRIETARY TO MOLEX INC. AND SHOULD NOT BE USED WITHOUT WRITTEN PERMISSION			
DOCUMENT NO. CS-50695-001			FILE NAME 50695001.S04		SHEET 4 OF 4
ES-40000-3999	REV. B	SHEET 2	95/MAR/10	EC U5-0926	DOCBORD.DGN LV=57 EN-37-IC(059) MXJ-57



注記
NOTES

- 適合ハウジング:51154-160*, 501598-1604
APPLICABLE HOUSING:51154-160* . 501598-1604
- 材料:リン青銅、錫メッキ材 (t=0.2)
MATERIAL :PRE-TINNED PHOSPHOR BRONZE (t=0.2)
- 適用電線:APPLICABLE WIRE RANGE
AVS-0.5,AVS-0.5f,AVSS-0.5,AVSS-0.5f,CAVS-0.5,CAVUS-0.5
AVS-0.75f,AVSS-0.75f
AVS-0.85,AVSS-0.85,CAVS-0.85,CAVUS-0.85
- 被覆外径 Ø1.3-2.3
INS. RANGE

50695-8000	連鎖状 CHAIN
MATERIAL NO.	端子形状 FORM
MODEL NO.	50695-8*00

REVISED EC NO: J2009-1355 DRWN:NAKAMURA 2008/12/16 CHKD:T. HARUYAMA 2008/12/16 APPR:NUKITA 2009/01/14	GENERAL TOLERANCES (UNLESS SPECIFIED)	DIMENSION STYLE MM ONLY	SCALE 5:1	DESIGN UNITS METRIC	THIRD ANGLE PROJECTION
	10 UNDER ±0.2	DRAWN BY MSAKANO	DATE '96/11/28	TITLE 4.0 WIRE RO WIRE CRIMP RECEPTACLE	
	10 OVER 30 UNDER ±0.25	CHECKED BY MSAKANO	DATE '96/11/28	MOLEX INCORPORATED	
	30 OVER ±0.3	APPROVED BY MENOMOTO	DATE '96/11/28	MATERIAL NO.	DOCUMENT NO. SD-50695-001
ANGULAR ±3 °	DRAFT WHERE APPLICABLE MUST REMAIN WITHIN DIMENSIONS	SIZE A3	THIS DRAWING CONTAINS INFORMATION THAT IS PROPRIETARY TO MOLEX INCORPORATED AND SHOULD NOT BE USED WITHOUT WRITTEN PERMISSION		