

SPECIFICATION FOR APPROVAL



TO: _____

PART NO.		REV.		DELTA SAMPLE ISSUE NO	
PART NAME	EMI FILTER		DELTA MODEL		06A5
ORDER P/N.	06A5		SAMPLE ISSUE DATE		

1. ELECTRICAL CHARACTERISTICS:

1-1. VOLTAGE RATING 250VAC

1-2. CURRENT RATING

UL : RECOGNIZED AT 6A,115VAC/250VAC

CSA : CERTIFIED AT 6A,115VAC/250VAC

SEMKO : 6A/250VAC

1-3. OPERATING FREQUENCY48-440Hz

1-4. HIPOT RATING (FOR ONE MINUTE)

A. LINE TO GROUND 2000VAC

B. LINE TO LINE 2000VAC

1-5. MINIMUM INSERTION RESISTANCE (FOR ONE NINUTE AT 500VDC)

A. LINE & NEUTRAL TO GROUND 10M OHM

B. LINE TO NEUTRAL 10M OHM

1-6. SAFETY



REPORT BY	CHECKED BY	APPROVED BY		
			REV.	

SPECIFICATION FOR APPROVAL



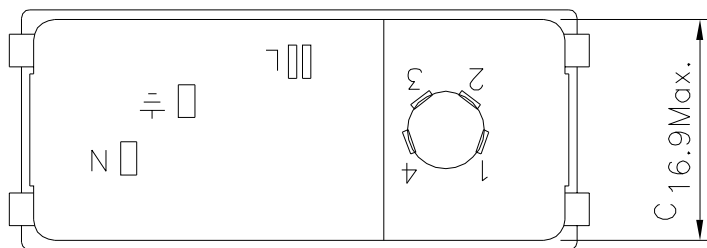
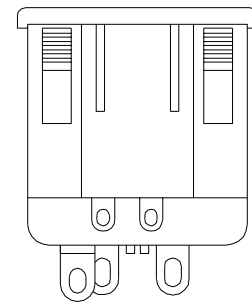
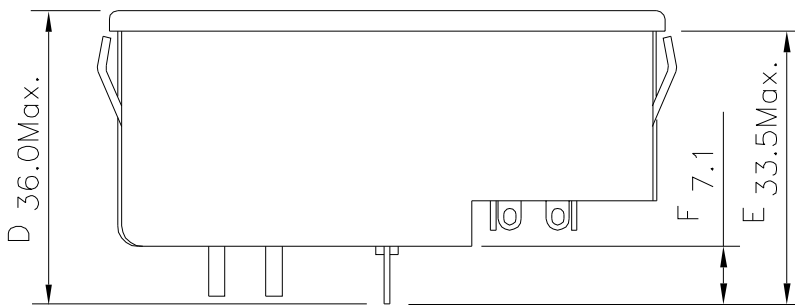
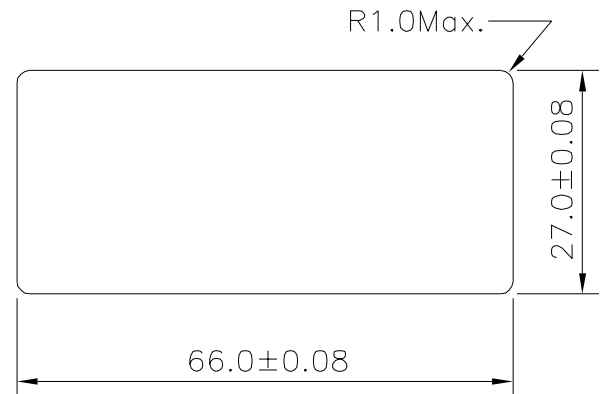
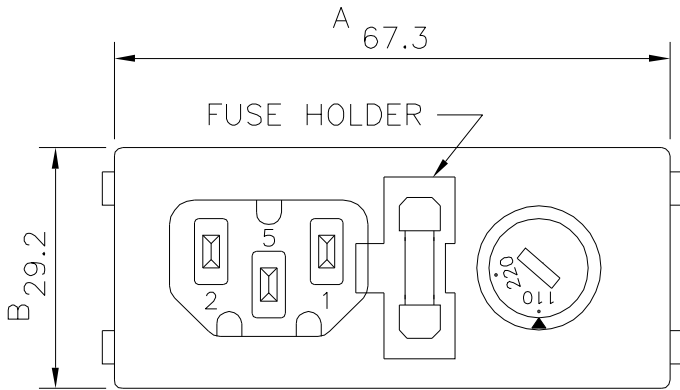
TO: _____

PART NO.		REV.		DELTA SAMPLE ISSUE NO	
PART NAME	EMI FILTER		DELTA MODEL		06A5
ORDER P/N.	06A5		SAMPLE ISSUE DATE		

2. PHYSICAL DIMENSIONS:

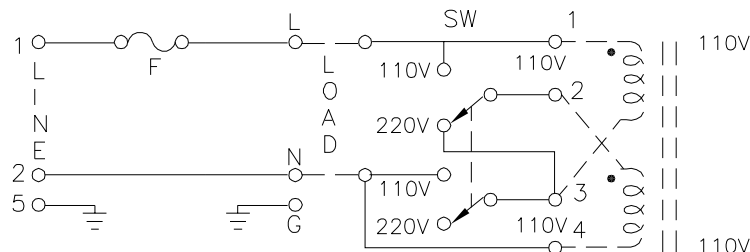
* SUGGESTED THICKNESS OF MOUNTING PANEL IS FROM 1.0 TO 1.6 mm

* SUGGEST MOUNTING CUTOUT



UNIT: mm

3. SCHEMATIC:



REPORT BY	CHECKED BY	APPROVED BY	UNLESS OTHERWISE SPECIFIED DIMENSION TOLERANCE DCEIMALS .x± .xx± ANGLES±		
			REV.		

DELTA ELECTRONICS, INC.

186 RUEY KUANG ROAD, NEIHU. TAIPEI 114,
TAIWAN, R.O.C.
TEL:886-2-87972088 FAX:886-2-87972120