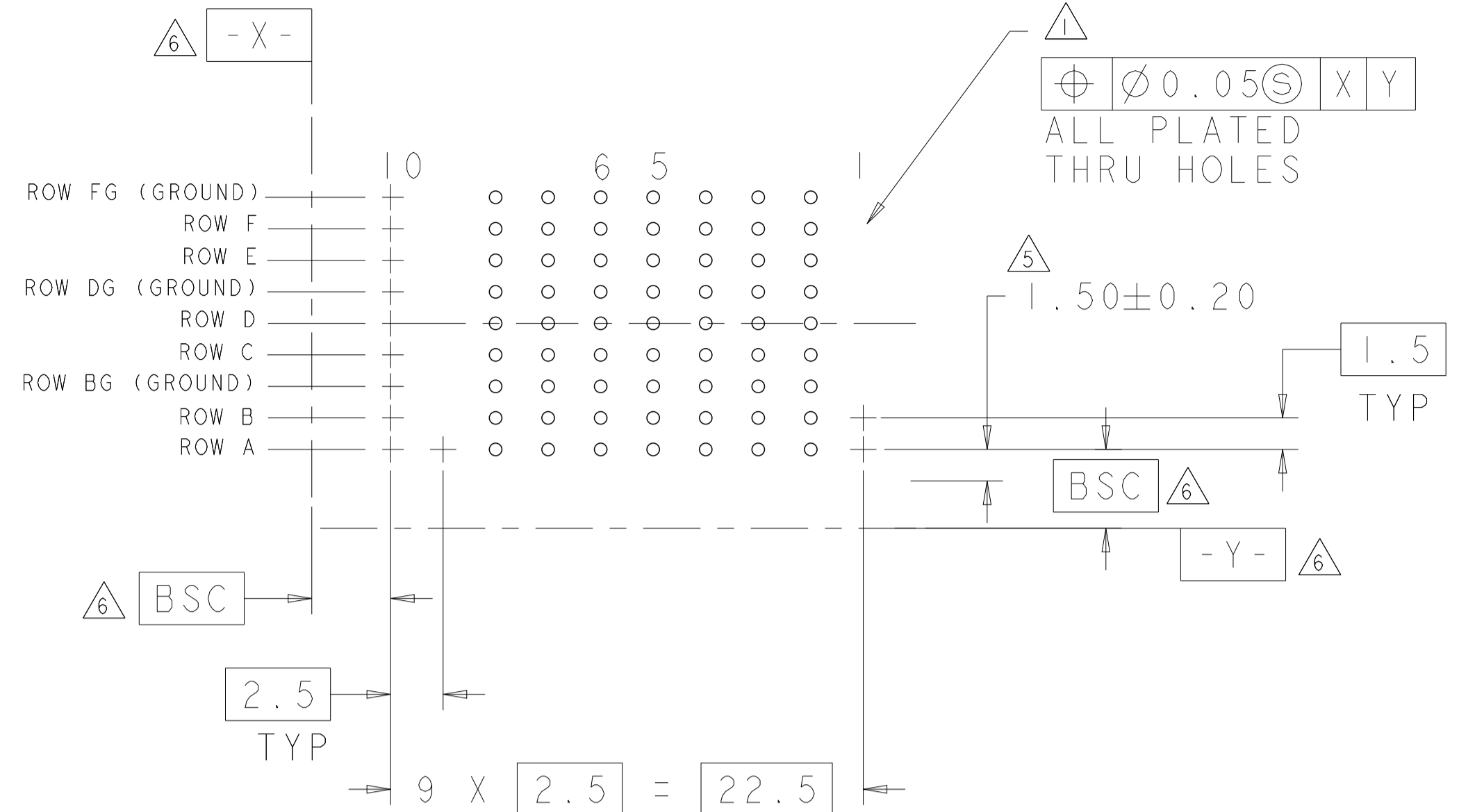
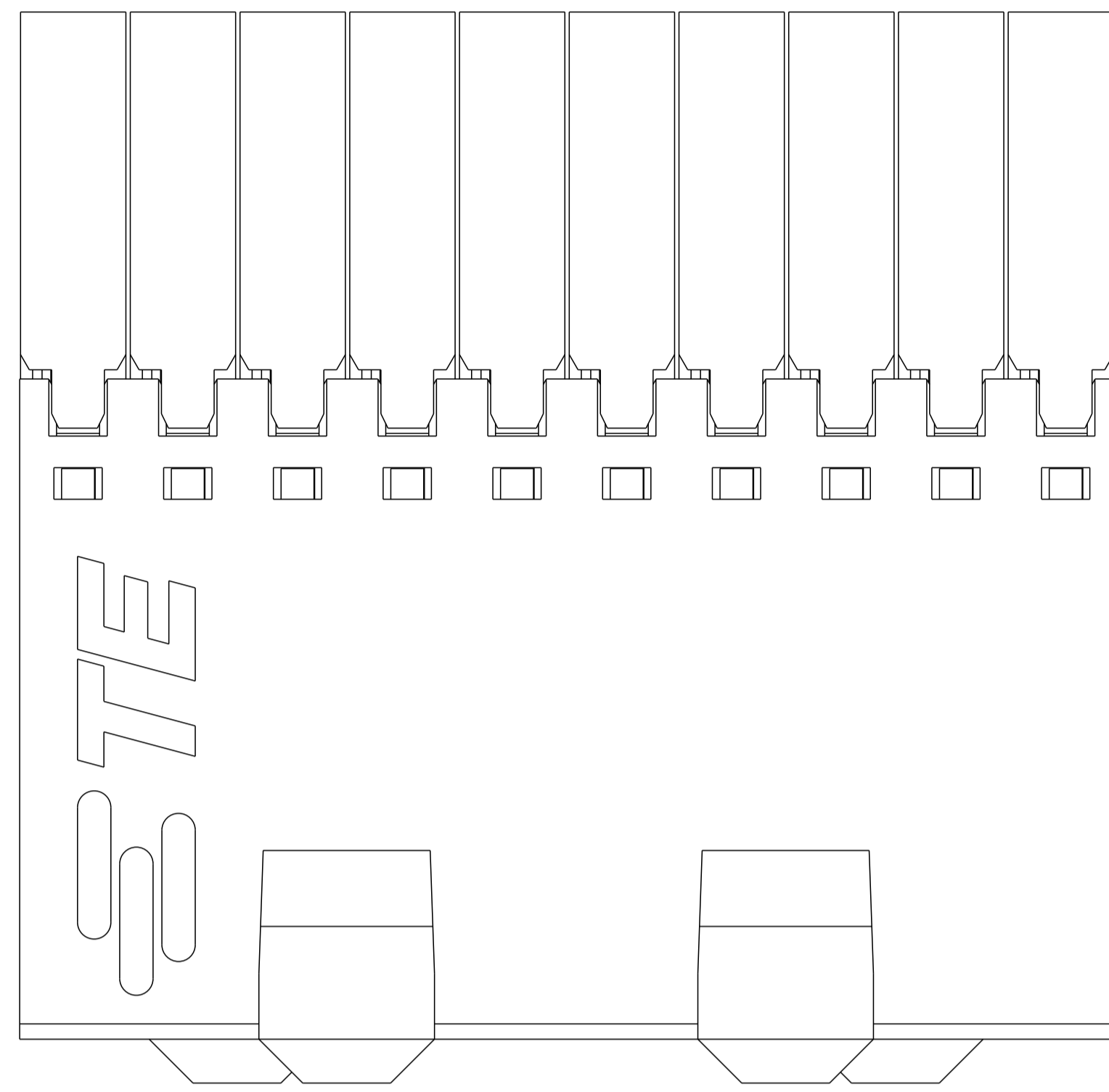
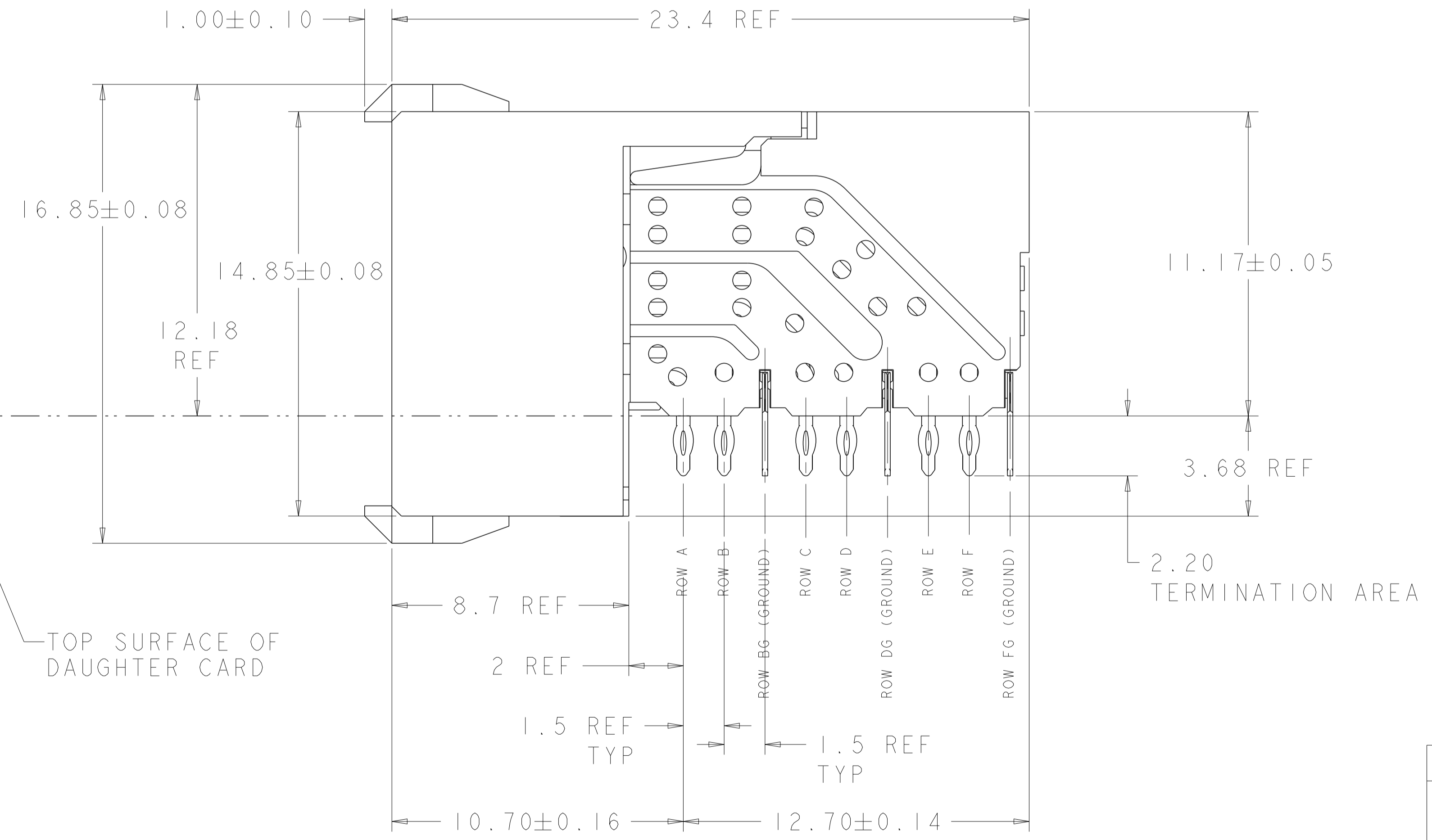
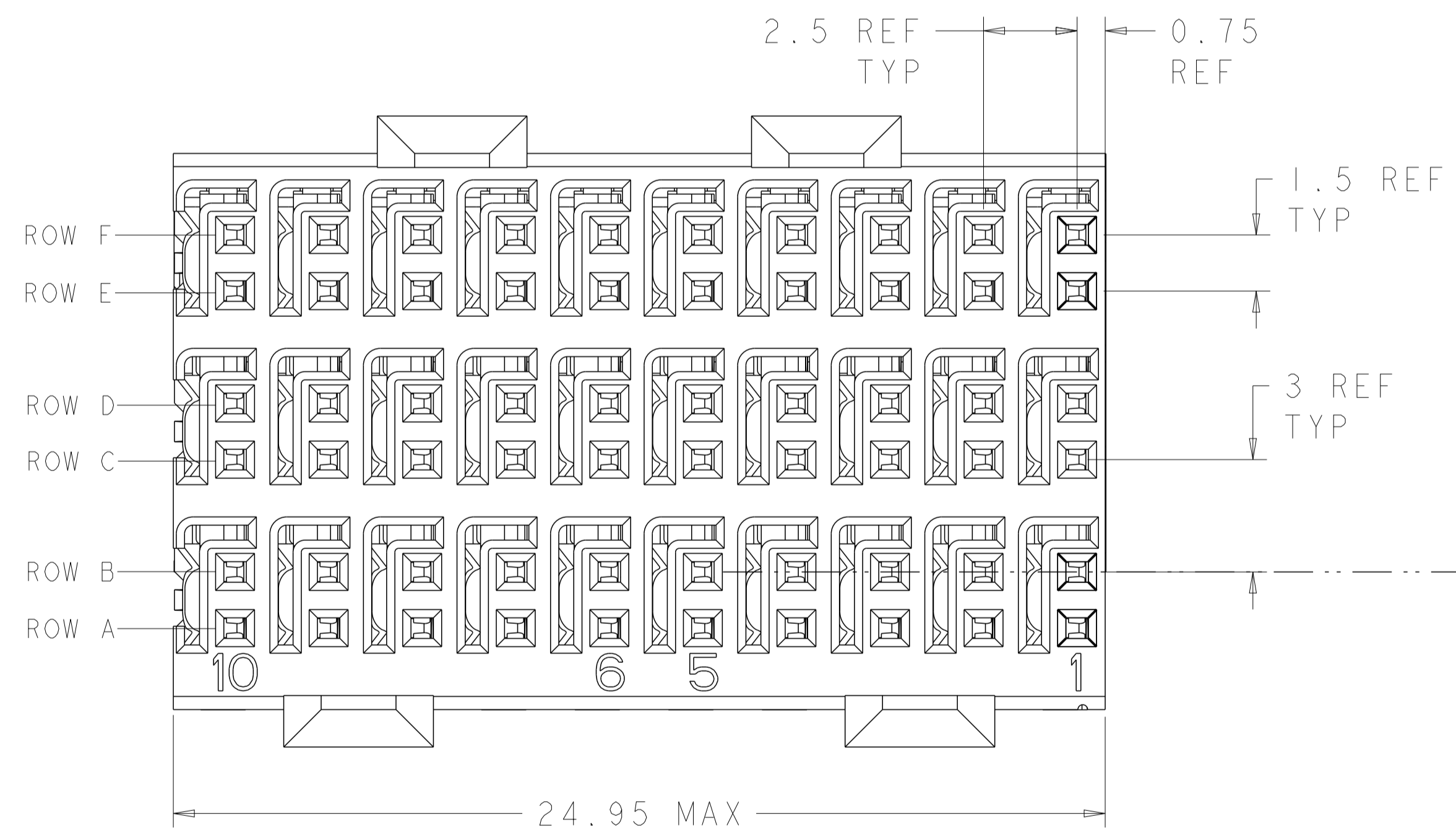


LOC		DIST		REVISIONS			
P	LTN	DESCRIPTION	DATE	DWN	APVD		
C		REV PER ECO-11-007577	13APR2011	RKC	JE		
D		REVISED PER ECO-17-000271	16JAN2017	AP	RP		
E		REVISED PER ECO-17-013112	13SEP2017	AP	RP		

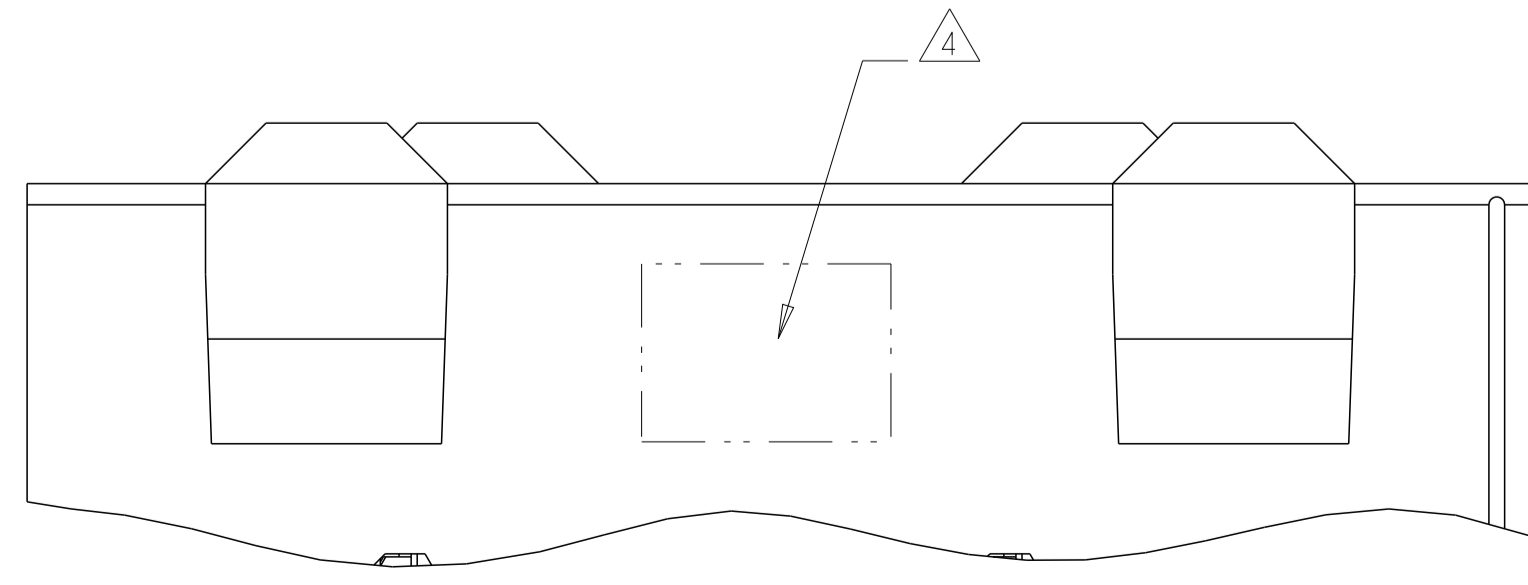


- $\Delta 1$ REFERENCE APPLICATION SPEC 114-13059 FOR RECOMMENDED PLATED THRU HOLE DIAMETER AND PLATING THICKNESSES.
- $\Delta 2$ MATERIAL:
 SHIELD - PHOSPHOR BRONZE
 CONTACT - COPPER-NICKEL-SILICON
 HOUSING, CHICKLET AND CHICKLET COVER - GLASS FILLED POLYESTER, UL 94V-0 RATED.
- $\Delta 3$ FINISH: SIGNAL AND GROUND CONTACTS:
 MATING AREA: MEETS THE PERFORMANCE REQUIREMENTS OF PRODUCT SPECIFICATION 108-2055; BASED ON TELCORDIA GR-1217-CORE, APPLICATIONS IN UNCONTROLLED ENVIRONMENTS
 COMPLIANT PIN AREA: 0.5 μ m MIN MATTE TIN OVER BASE PLATING
- $\Delta 4$ CONNECTOR MARKED WITH 6469081-1 AND DATE CODE IN APPROXIMATE AREA SHOWN.
- $\Delta 5$ DIMENSION APPLIES TO CENTERLINE OF THRU HOLE
- $\Delta 6$ DATUMS AND BASIC DIMENSIONS ESTABLISHED BY CUSTOMER
- 7. CONTACT AREA LUBRICATED WITH BELLCORE APPROVED LUBRICANT. TECHNICAL REFERENCE: GR-1217-CORE, ISSUE 1, NOVEMBER 1995.

RECOMMENDED PC BOARD LAYOUT,
 DAUGHTER BOARD,
 COMPONENT SIDE SHOWN
 SCALE 4:1



TOP SURFACE OF DAUGHTER CARD



1934558-1
 PART NUMBER

THIS DRAWING IS A CONTROLLED DOCUMENT.		DWN B. CARBO 05OCT2007	TE Connectivity RECEPTACLE ASSEMBLY, 3 PAIR, 25mm, HMZd
DIMENSIONS:		CHK R. PATTERSON 05OCT2007	
mm	0 PLC ±	APVD R. PATTERSON 05OCT2007	NAME
	1 PLC ±	PRODUCT SPEC	APPLICATION SPEC
	2 PLC ±		SIZE CAGE CODE DRAWING NO
	3 PLC ±		RESTRICTED TO
	4 PLC ±		SCALE 8:1 SHEET 1 OF 1 REV E
	ANGLES ±		
MATERIAL	FINISH	WEIGHT	
$\Delta 2$	$\Delta 3$		