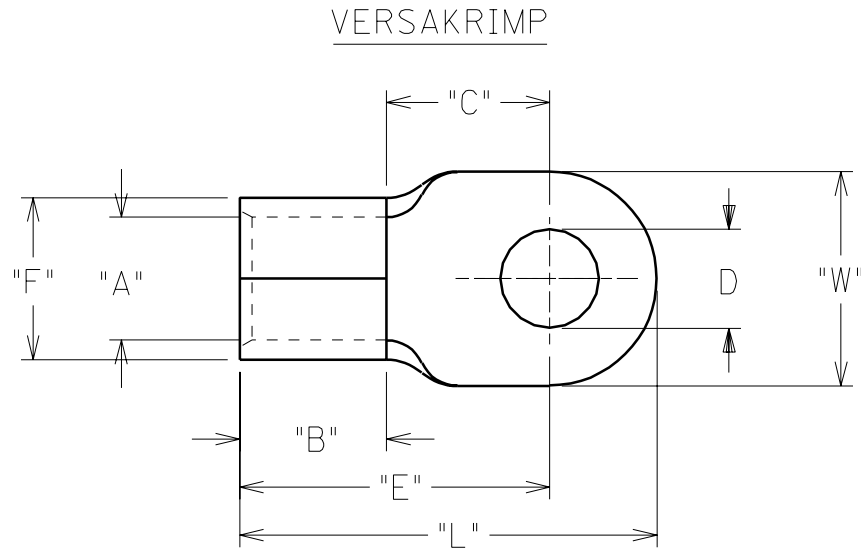


| PART NUMBER | WIRE SIZE | "W" | "C" MIN | "E" MAX | "B" MIN | "L" MAX | "A" MIN | STOCK THICKNESS | "F" MAX | AVAILABLE STUD SIZE |
|-------------|-----------|----------------|---------|---------|---------|---------|---------|-----------------|---------|-----------------------|
| L-395- | 4/0 | 1.102 1.128 | .822 | 1.653 | .734 | 2.242 | .622 | .099 .102 | .865 | 14, 38, 76, 12, 58 |
| L-398- | 4/0 | 1.227 1.253 | 1.292 | 2.123 | .734 | 2.765 | .622 | .099 .102 | .865 | 58, 34, 78 |

DRWG. NO. SD02051

(A)



MATERIAL: COPPER
PLATING: ELECTRO-TIN

| STUD SIZE | ±.005 "D" | |
|-----------|-----------|------|
| 14 | 1/4" | .265 |
| 56 | 5/16" | .328 |
| 38 | 3/8" | .390 |
| 76 | 7/16" | .453 |
| 12 | 1/2" | .515 |
| 58 | 5/8" | .656 |
| 34 | 3/4" | .781 |
| 78 | 7/8" | .906 |

(A)

CUSTOMER DRAWING

| | |
|------|--|
| A | ADD STUD SIZE & UPDATE TO CAD ET970953 08/20 |
| LTR. | REVISIONS |

| | |
|---|---------------|
| DIMENSIONS SHOWN (METRIC) INCH | |
| UNLESS OTHERWISE SPECIFIED TOLERANCES: ANGULAR ± 1/2° | |
| | INCH METRIC |
| 3 PLACE | ± .005 ± 0.13 |
| 2 PLACE | ± .01 ± 0.25 |
| 1 PLACE | ± --- ± --- |
| DRAFT WHERE APPLICABLE MUST REMAIN WITHIN DIMENSIONS | |
| DRWG. BY LEM | CHK'D. BY |
| APP'D. BY | SCALE NO:NE |

| | | | |
|---|--|-------------------|-----------------|
| REVISE ONLY ON CAD SYSTEM | | | |
| TITLE "L" RING TONGUE TERMINAL | | | |
| molex ETC INC. PINELLAS PARK, FLA. 33781 U.S.A. | | SHEET NO. | DATE 70 /03 /02 |
| PART NO. SEE CHART | | DRWG. NO. SD02051 | |
| FILE NAME SDL395 DGN | THIS DRAWING CONTAINS INFORMATION THAT IS PROPRIETARY TO MOLEX-ETC INC. AND SHOULD NOT BE USED WITHOUT WRITTEN PERMISSION. | | DIV. SIZE A |