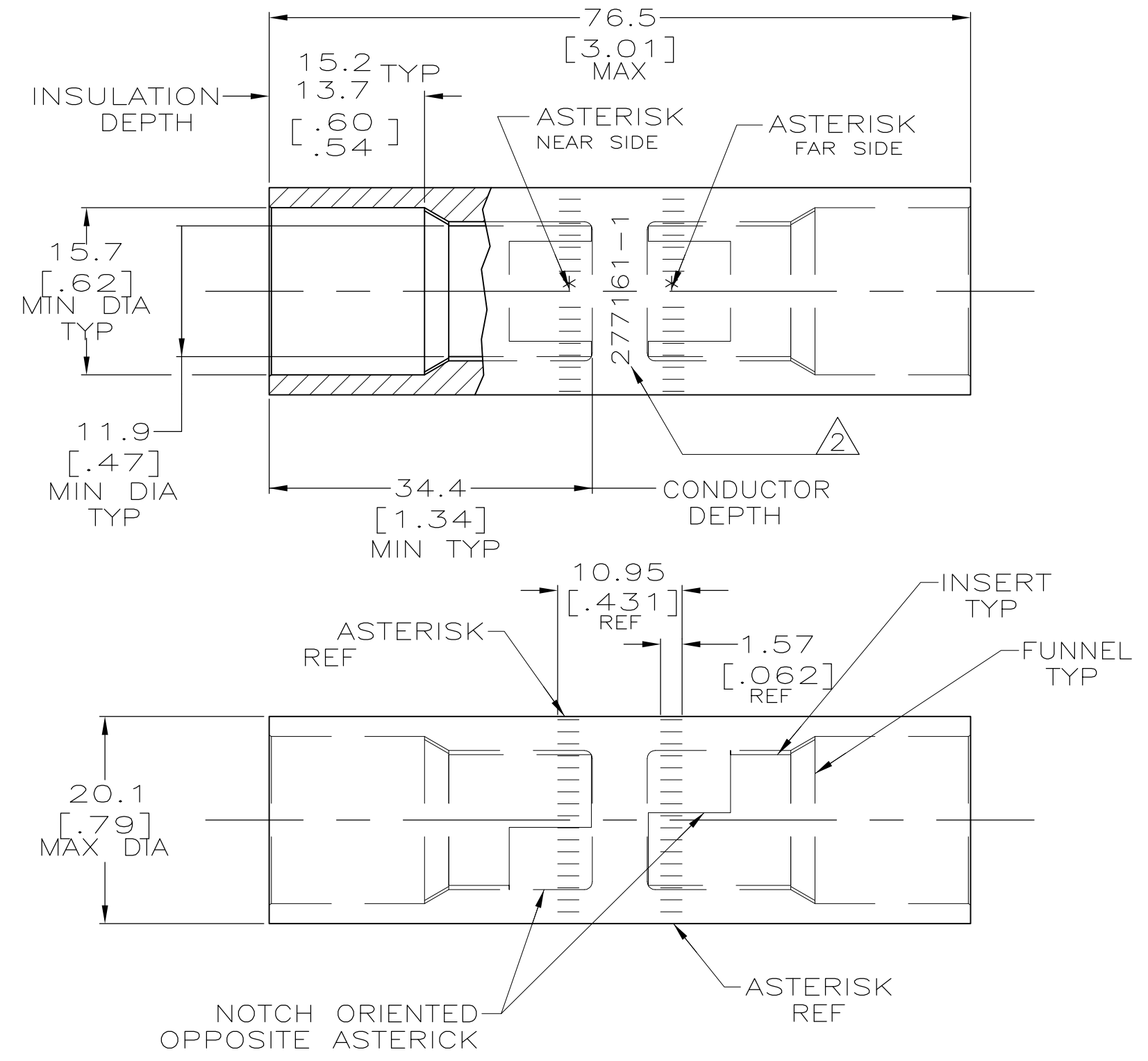


THIS DRAWING IS UNPUBLISHED. RELEASED FOR PUBLICATION  
 © COPYRIGHT - By - ALL RIGHTS RESERVED.

LOC	DIST	REVISIONS					
G	86	P	LTR	DESCRIPTION	DATE	DWN	APVD
		L		REV PER ECO-11-008916	13MAY11	PY	BW



1 WIRE INSULATION DIA: 12.70 - 13.97  
 [.500] [.550]  
 2 STAMP " 277161-1 AMP 2/0 AL-1/0 CU"  
 APPROX AS SHOWN.

SPLICE: COPPER ASTM B-187 ANNEALED TIN PL 0.00381 [.000150] MIN THK PER ASTM B545		277161-1
INSERT & FUNNEL: BRASS ASTM B36 NICKEL PL SAE AMS QQ-N-290A, DATED JULY 2000, 0.00254 [.000100] MIN THK		
MATERIAL & FINISH		PART NUMBER

THIS DRAWING IS A CONTROLLED DOCUMENT.		DWN DK SCHRUM 18NOV96	<b>STE</b> TE Connectivity	
DIMENSIONS: mm[INCHES]		CHK WJ VOCKROTH 19NOV96		
TOLERANCES UNLESS OTHERWISE SPECIFIED:		APVD JL MECKLEY 19NOV96	NAME	
0 PLC ± -		PRODUCT SPEC	WIRE SPLICE, BUTT, SEALED COPALUM, 71.3mm2 [2/0] ALUMINUM 53.9mm2 [1/0] COPPER	
1 PLC ± -		APPLICATION SPEC	SIZE	CAGE CODE
2 PLC ± -		108-11011	114-2134	DRAWING NO
3 PLC ± -		WEIGHT 107.7 ±5 GRAMS	A300779	RESTRICTED TO
4 PLC ANGLES ± -		CUSTOMER DRAWING	C=277161	SCALE 2:1
MATERIAL SEE TABLE		FINISH SEE TABLE		SHEET 1 OF 1
				REV L