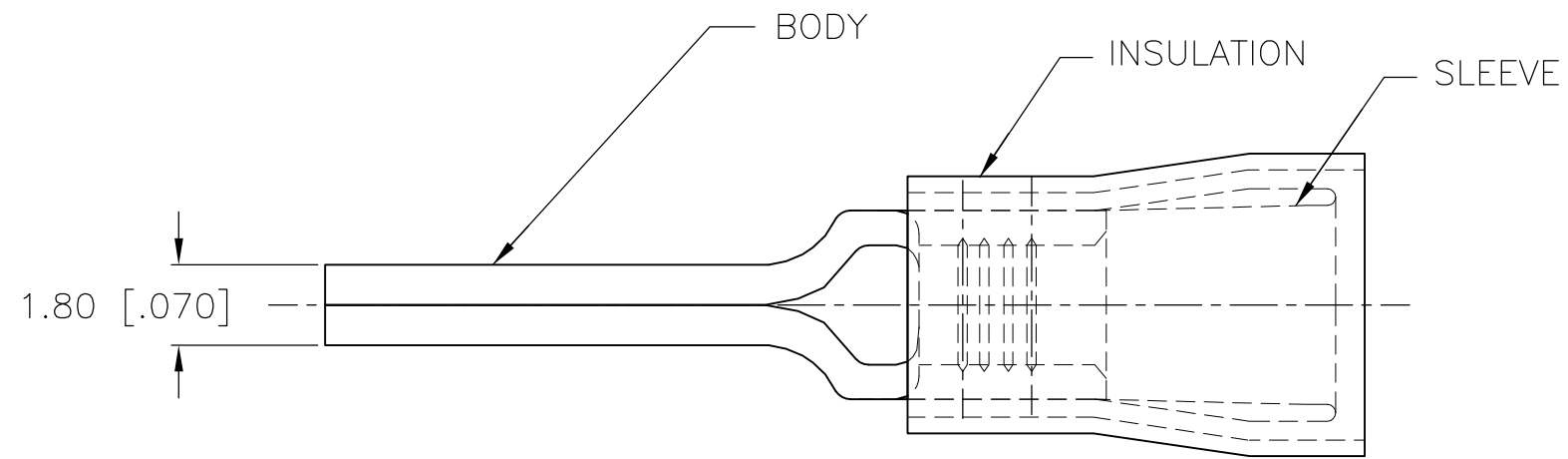


THIS DRAWING IS UNPUBLISHED. RELEASED FOR PUBLICATION
 © COPYRIGHT - By - ALL RIGHTS RESERVED.

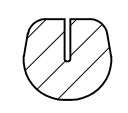
LOC	DIST	REVISIONS					
		P	LTR	DESCRIPTION	DATE	DWN	APVD
G	14		F1	REVISED PER ECO-14-003208	17MAR2014	NK	DR



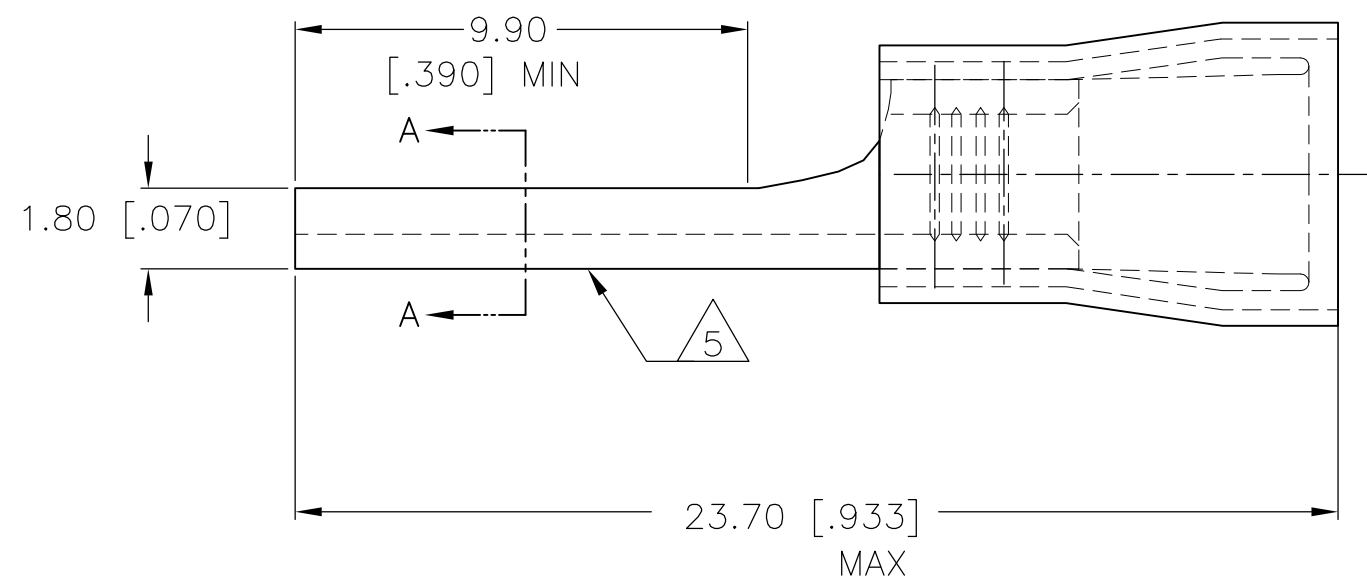
AMP
WIRE RANGE

16-14 AWG
STRANDED

- 1 WIRE INSULATION DIA.
2.92-4.32 [.115-.170] DIA.
- 2 MATERIAL: BODY - CU PER ASTM B152
SLEEVE - CU PER ASTM B152
INSULATION - NYLON
- 3 FINISH: BODY - TIN PL. PER ASTM B545
SLEEVE - TIN PL. PER ASTM B545
INSULATION - COLOR - BLUE
- 4 LOOSE PIECE P/N 165172
- 5 STAMP AMP 16-14* APPROX AS SHOWN



SECTION A-A



4000	ON TAPE	696274-2
QTY	PACKAGE TYPE	PART NO

AMP INCORPORATED
CUSTOMER SERVICE SYSTEMS

FOR ADDITIONAL PRODUCT INFORMATION OR COPIES OF DRAWINGS AND TECHNICAL DOCUMENTS
 PRODUCT INFORMATION CENTER
 1-800-522-6752

FOR APPLICATION TOOLING INFORMATION
 TOOLING ASSISTANCE CENTER
 1-800-722-1111

FOR ORDER ENTRY
 1-800-526-5142

MAX RECOMMENDED OPERATING TEMPERATURE:
105°C [221° F]

VOLTAGE RATING:
300V MAX

CIRCULAR MIL AREA:
1.0-2.6mm² [1,974-5,131] STRANDED

THIS DRAWING IS A CONTROLLED DOCUMENT.

DIMENSIONS: mm [INCHES]

TOLERANCES UNLESS OTHERWISE SPECIFIED:

0 PLC	± -
1 PLC	± -
2 PLC	± 0.20 [.008]
3 PLC	± -
4 PLC	± -
ANGLES	± -

MATERIAL 2

FINISH 3

DWN JR RUTH 01DEC00
 CHK T MICHIELUTTI 01DEC00
 APVD T MICHIELUTTI 01DEC00
 PRODUCT SPEC -
 APPLICATION SPEC -
 WEIGHT -

STE TE Connectivity

NAME: TERMINAL, WIRE PIN, PIDG
WIRE SIZE, 16-14 AWG

SIZE	CAGE CODE	DRAWING NO	RESTRICTED TO
A3	00779	C-696274	-

CUSTOMER DRAWING SCALE 6:1 SHEET 1 OF 1 REV F1