

PART NO.	HRS NO.	CONTACTS	A	B	C	D	E	F
DF14-2P-1.25H(26)	CL538-0021-4-26	2	7.45	1.25	2.95	3.65	6.45	8.05
DF14-3P-1.25H(26)	CL538-0022-7-26	3	8.70	2.50	4.20	4.90	7.70	9.30
DF14-4P-1.25H(26)	CL538-0023-0-26	4	9.95	3.75	5.45	6.15	8.95	10.55
DF14-5P-1.25H(26)	CL538-0024-2-26	5	11.20	5.00	6.70	7.40	10.20	11.80
DF14-6P-1.25H(26)	CL538-0025-5-26	6	12.45	6.25	7.95	8.65	11.45	13.05
DF14-7P-1.25H(26)	CL538-0026-8-26	7	13.70	7.50	9.20	9.90	12.70	14.30
DF14-8P-1.25H(26)	CL538-0027-0-26	8	14.95	8.75	10.45	11.15	13.95	15.55
DF14-9P-1.25H(26)	CL538-0028-3-26	9	16.20	10.00	11.70	12.40	15.20	16.80
DF14-10P-1.25H(26)	CL538-0029-6-26	10	17.45	11.25	12.95	13.65	16.45	18.05
DF14-15P-1.25H(26)	CL538-0084-4-26	15	23.70	17.50	19.20	19.90	22.70	24.30
DF14-20P-1.25H(26)	CL538-0089-8-26	20	29.95	23.75	25.45	26.15	28.95	30.55
DF14-25P-1.25H(26)	CL538-0094-8-26	25	36.20	30.00	31.70	32.40	35.20	36.80
DF14-30P-1.25H(26)	CL538-0020-1-26	30	42.45	36.25	37.95	38.65	41.45	43.05

3	PHOSPHOR BRONZE	TIN-COPPER PLATED 1μm min UNDER PLATING: NICKEL PLATED 0.5μm min	5	POLYESTER	CLEAR (COVER TAPE)
2	BRASS	TIN-COPPER PLATED 1μm min UNDER PLATING: NICKEL PLATED 0.5μm min	4	A-PET	CLEAR (EMBOSSED CARRIER TAPE)
1	POLYAMIDE	BEIGE, UL94V-0			
NO.	MATERIAL	FINISH, REMARKS	NO.	MATERIAL	FINISH, REMARKS

CODE NO. (OLD)
CL

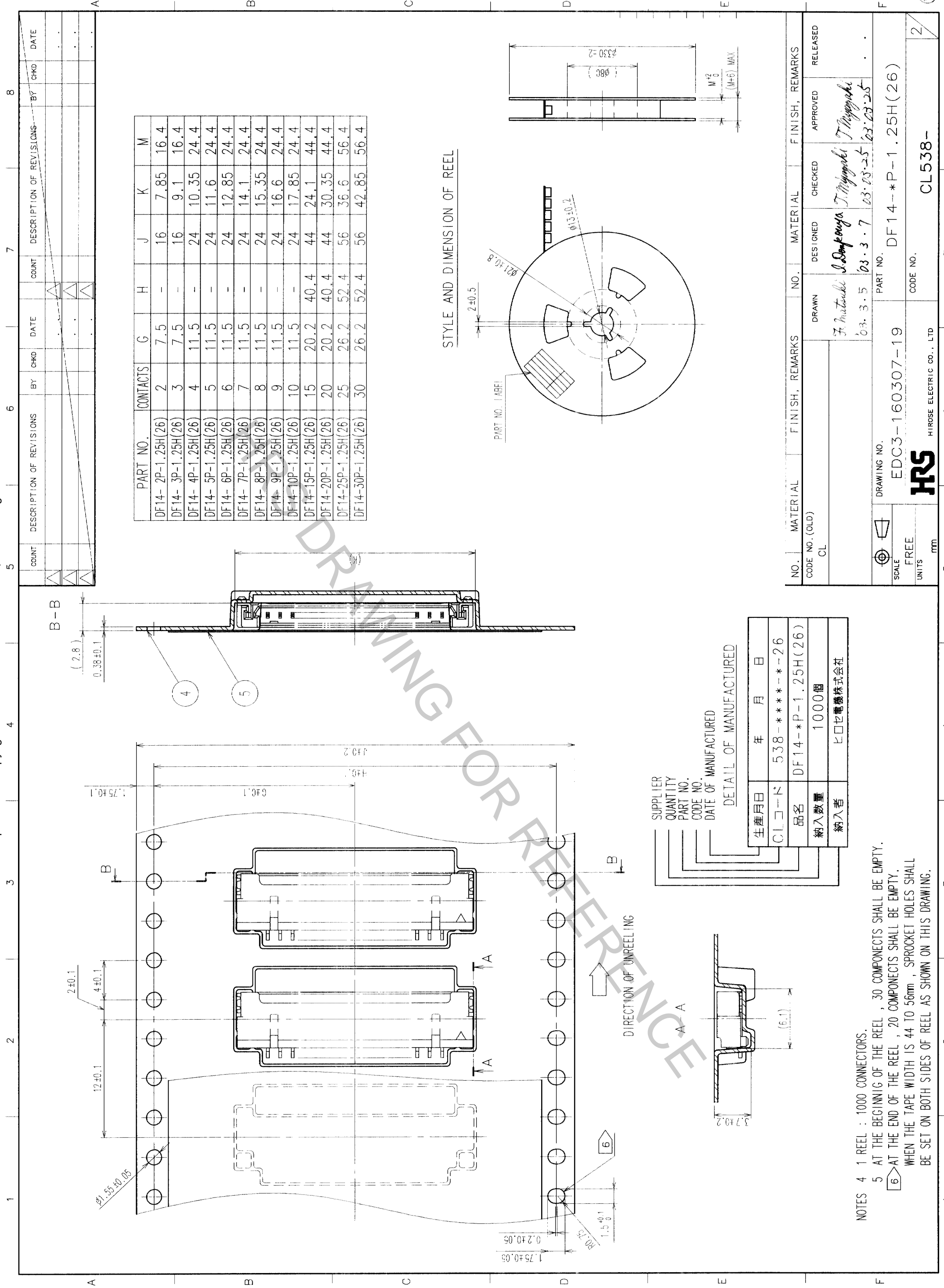
DRAWN
F. Inoue
DESIGNED
S. Sankawa
CHECKED
T. Miyaguchi
APPROVED
T. Miyaguchi
RELEASED

03.3.5
03.3.7
03.03.25
03.03.25

DRAWING NO.
EDC3-160307-19
PART NO.
DF14-*P-1.25H(26)

SCALE
5 : 1
UNITS
mm

HIROSE ELECTRIC CO., LTD
CL538-
1/2



PART NO.	CONTACTS	G	H	J	K	M
DF14-2P-1.25H(26)	2	7.5	-	16	7.85	16.4
DF14-3P-1.25H(26)	3	7.5	-	16	9.1	16.4
DF14-4P-1.25H(26)	4	11.5	-	24	10.35	24.4
DF14-5P-1.25H(26)	5	11.5	-	24	11.6	24.4
DF14-6P-1.25H(26)	6	11.5	-	24	12.85	24.4
DF14-7P-1.25H(26)	7	11.5	-	24	14.1	24.4
DF14-8P-1.25H(26)	8	11.5	-	24	15.35	24.4
DF14-9P-1.25H(26)	9	11.5	-	24	16.6	24.4
DF14-10P-1.25H(26)	10	11.5	-	24	17.85	24.4
DF14-15P-1.25H(26)	15	20.2	40.4	44	24.1	44.4
DF14-20P-1.25H(26)	20	20.2	40.4	44	30.35	44.4
DF14-25P-1.25H(26)	25	26.2	52.4	56	36.6	56.4
DF14-30P-1.25H(26)	30	26.2	52.4	56	42.85	56.4

STYLE AND DIMENSION OF REEL

SUPPLIER	年	月	日
QUANTITY	538	-	-
PART NO.	DF14-*	P-1.25H(26)	
CODE NO.	1000	個	
DATE OF MANUFACTURE	ヒロセ電機株式会社		

NOTES 4 1 REEL : 1000 CONNECTORS.
 5 AT THE BEGINNING OF THE REEL , 30 COMPONENTS SHALL BE EMPTY.
 6 AT THE END OF THE REEL , 20 COMPONENTS SHALL BE EMPTY.
 WHEN THE TAPE WIDTH IS 44 TO 56mm , SPROCKET HOLES SHALL BE SET ON BOTH SIDES OF REEL AS SHOWN ON THIS DRAWING.

NO.	MATERIAL	FINISH, REMARKS	NO.	MATERIAL	FINISH, REMARKS
CODE NO. (OLD)	CL		DESIGNED	J. Miyagaki	APPROVED
SCALE	FREE		DRAWN	F. Mitsuhashi	CHECKED
UNITS	mm		DATE	03.3.5	DATE
DRAWING NO.	EDC3-160307-19	PART NO.	DF14-*P-1.25H(26)	DATE	03.03.25
CODE NO.		CODE NO.		DATE	03.03.25
HRS HIROSE ELECTRIC CO., LTD		CL538-		2	

TO