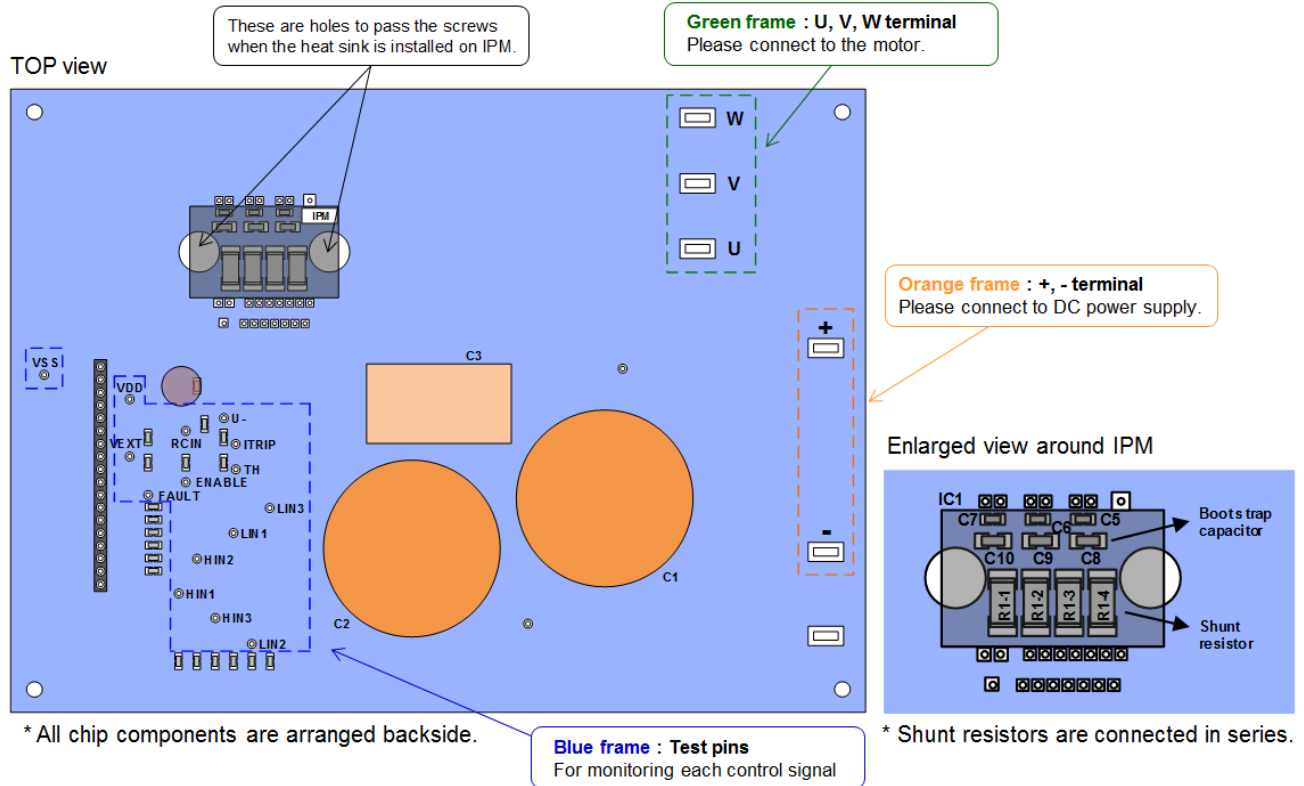
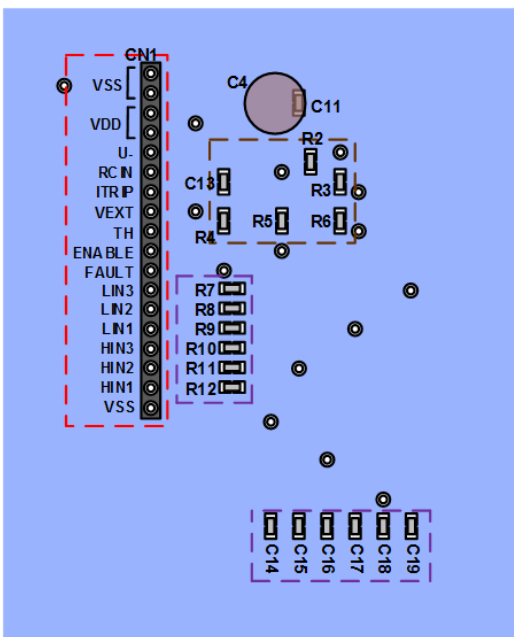


# Test Procedure for the STK5C4U332JGEVB Evaluation Board

## Description of each pin



## Enlarged view around test pins



\* All chip components are arranged backside.

**Red frame : Connector**  
For the connection to the control part

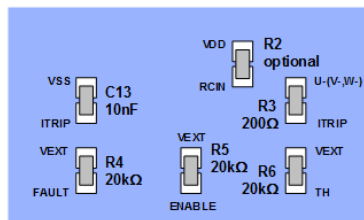
Vext terminal is connected pull-up resistor for TH, FAULT and ENABLE pins.  
Please impress arbitrary voltage to this terminal.

**Purple frame : Low pass filter for signal input pins**

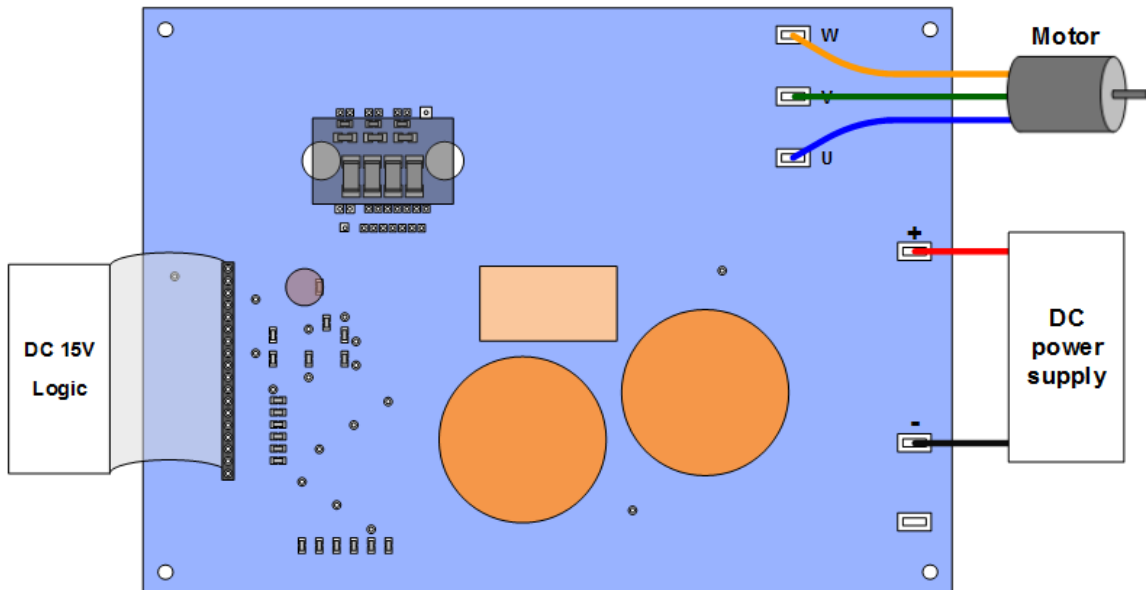
Resistor R7-R12 : 100Ω  
Capacitor C14-C19 to VSS : 100pF

**Brown frame :**

R4, R5, R6 : Pull-up resistor to VEXT  
R2 : Fault clear time setting  
R3, C13 : Time constant setting for ITRIP



## Operation procedure



**Step1:** Please connect IPM, each power supply, logic parts, and the motor to the evaluation board, and confirm that each power supply is OFF at this time.

**Step2:** Please impress the power supply of DC15V.

**Step3:** Please perform a voltage setup according to specifications, and impress the power supply between the "+" and the "-" terminal.

**Step4:** By inputting signal to the logic part, IPM control is started.

(Therefore, please set electric charge to the boot-strap capacitor of upper side to turn on lower side IGBT before running.)

※ When turning off the power supply part and the logic part, please carry out in the reverse order to above steps.