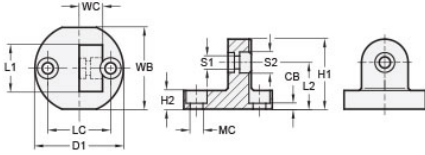




MT8-CBSW-16-A

Ruland Swivel Clamp Connector Base, Ruland Swivel Thru Hole 4.5mm, Clamp Width 16mm, Clamp Screw M4, Aluminum



Description

Ruland MT8-CBSW-16-A is a swivel clamp connector base with a 29mm base width, 31.5mm base diameter, 16mm clamp width, M4 clamp screw, and 25mm overall length. It is designed to fit with MT8 swivel clamp joints, t-swivel clamp joints, and swivel mounts with the same width and height. When combined with a swivel clamp or connector MT8-CBSW-16-A is an ideal articulating mounting solution for screens, sensors, reflectors, plexiglass machine guards, and other components that require frequent adjustments. An MT8-SWALKS-M4-16 adjustable clamping handle can be used to join it to clamps and connectors for rapid repositioning without the use of tools. It is aluminum and screws are 304 stainless steel for use in most industrial applications. MT8-CBSW-16-A can be permanently installed on extruded aluminum frames, sheet metal, and other surfaces using M4 hardware or the user can opt for portability by using MAGNET-43-22 magnetic base. It is manufactured by Otto Ganter, inventoried by Ruland, and RoHS3 compliant.

Product Specifications

Base Width WB	29 mm	Base Height H2	7 mm
Base Diameter D1	31.5 mm	Clamp Length L1	16 mm
Clamp Width WC	8 mm	Overall Height H1	25 mm
Center To Center LC	22 mm	Edge To Center L2	17 mm
Mounting Counterbore Diameter MC	M4	Counterbore to Base CB	3 mm
Swivel Counterbore 1 Diameter S1	4.5 mm	Swivel Counterbore 2 Diameter S2	7.5 mm
Material Specification	Aluminum	Manufacturer	JW Winco/ Otto Ganter
Country of Origin	Germany	Weight (lbs)	0.039700
UPC	634529231395	Tariff Code	7609.00.0000
UNSPC	31162908		