



## **Xadow - Gesture v1.0**

SKU 101040005

The sensor on Xadow - Gesture v1.0 is PAJ7620U2 that integrates gesture recognition function with general I2C interface into a single chip. It can recognize 13 gestures including move up, move down, move left, move right, move forward, move backward, circle-clockwise, circle-counter clockwise, up to down, down to up, left to right, right to left and wave. These gestures information can be simply accessed via the I2C bus.

**Notice: This module is not compatible with any other Xadow version 2 or RePhone modules.**

---

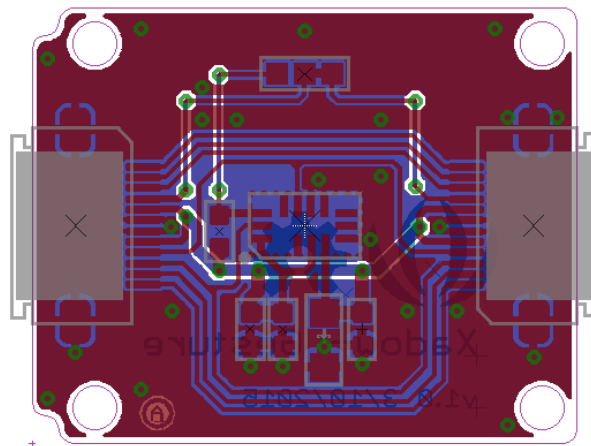
## FEATURES

- - 13 gesture recognition
  - - Gesture speed is 60°/s to 600°/s in Normal Mode and 60°/s to 1200°/s in Gaming Mode
  - - Ambient light immunity: < 100k Lux
  - - Built-in proximity detection
  - - I2C interface up to 400 kbit/s
  - - Compatible with the Grove interface
- 

## PART LIST

- 1x PCBA - Xadow - Gesture
  - 1x FPC Cable;12P-0.5-30mm
  - 1x FPC Cable;12P-0.5-50mm
- 

## SPECIFICATION



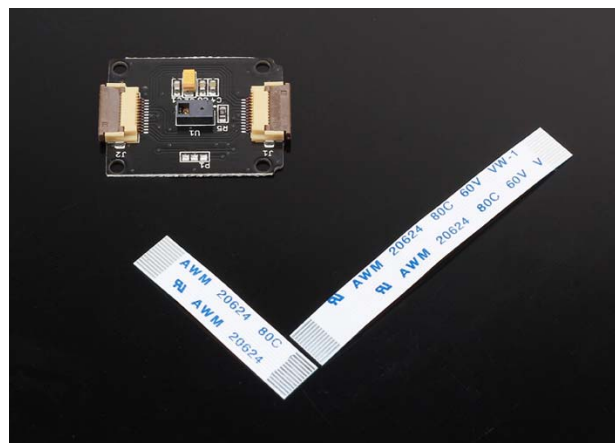
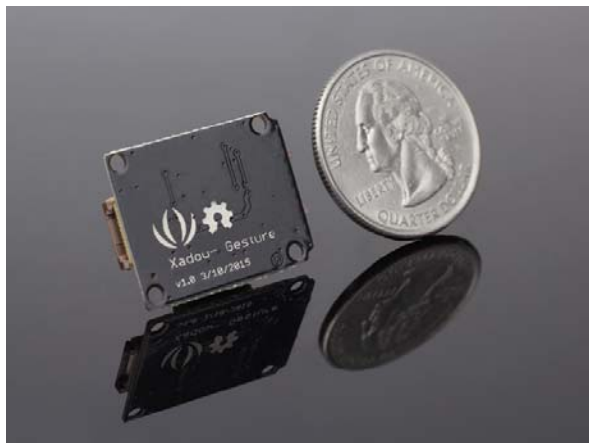
- **Sensor** :PAJ7620U2
- **Power supply**:2.8V to 3.3V and I/O voltage is 1.8V~3.3V
- **Compatible**: Xadow interface
- **interface**:IIC
- **Operating Temperature**: -40°C to +85°C
- **Dimensions**: 25 \* 20mm

## Technical Details

Dimensions	0mm x 0mm x 0mm
Weight	G.W 11g
Battery	Exclude

## ECCN/HTS

ECCN	Not Available
HSCODE	9031900090



<https://www.seeedstudio.com/Xadow-Gesture-v1-0-p-2460.html> 10-5-18