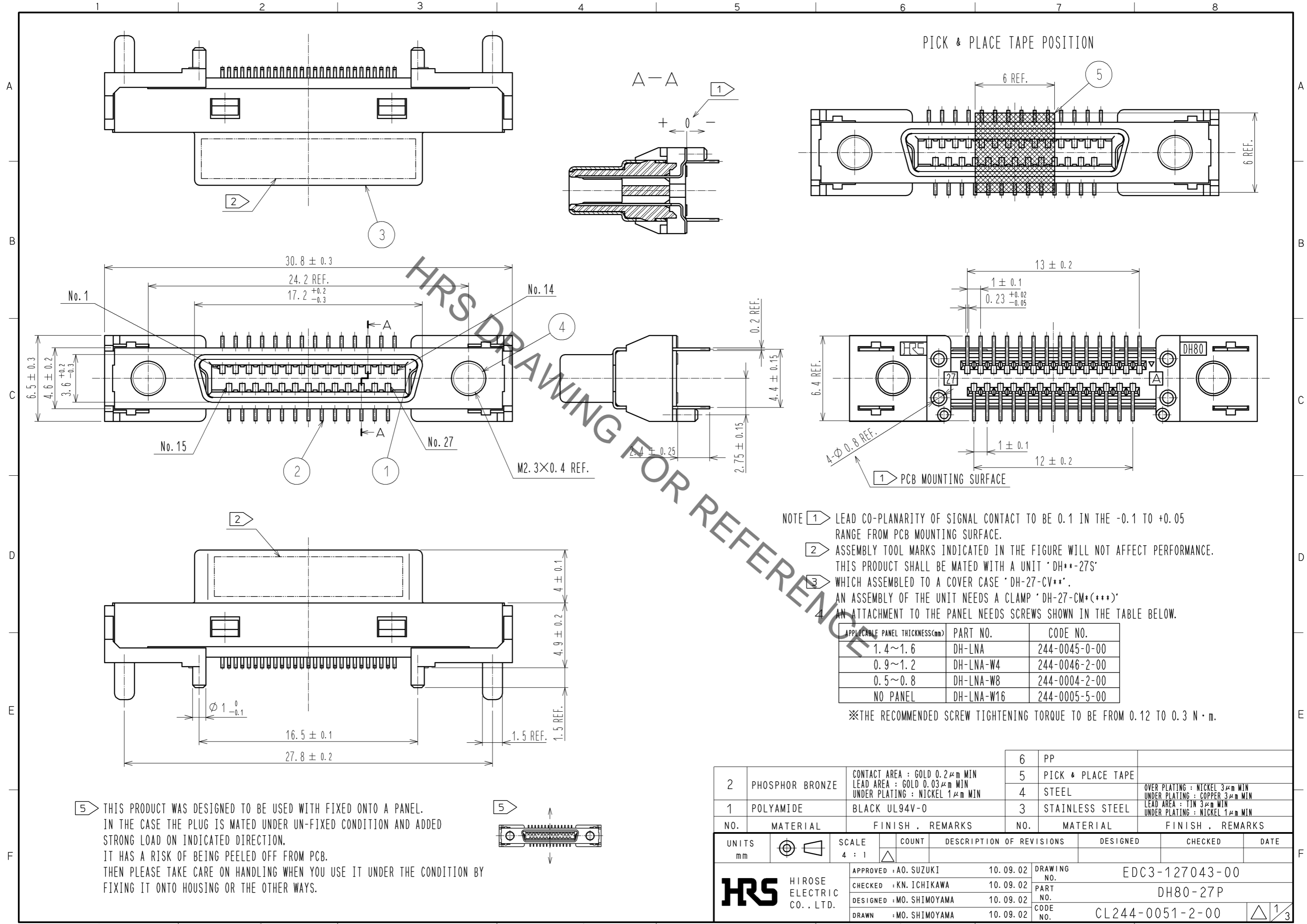


Aug.1.2019 Copyright 2019 HIROSE ELECTRIC CO., LTD. All Rights Reserved.
In case of consideration for using Automotive equipment / device which demand high reliability, kindly contact our sales window correspondents.



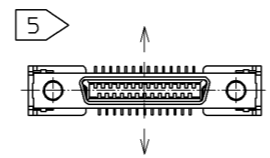
HRS DRAWING FOR REFERENCE

- NOTE 1 LEAD CO-PLANARITY OF SIGNAL CONTACT TO BE 0.1 IN THE -0.1 TO +0.05 RANGE FROM PCB MOUNTING SURFACE.
- 2 ASSEMBLY TOOL MARKS INDICATED IN THE FIGURE WILL NOT AFFECT PERFORMANCE. THIS PRODUCT SHALL BE MATED WITH A UNIT 'DH** -27S' WHICH ASSEMBLED TO A COVER CASE 'DH-27-CV**'. AN ASSEMBLY OF THE UNIT NEEDS A CLAMP 'DH-27-CM*(***)' AN ATTACHMENT TO THE PANEL NEEDS SCREWS SHOWN IN THE TABLE BELOW.

| APPLICABLE PANEL THICKNESS(mm) | PART NO. | CODE NO. |
|--------------------------------|------------|---------------|
| 1.4~1.6 | DH-LNA | 244-0045-0-00 |
| 0.9~1.2 | DH-LNA-W4 | 244-0046-2-00 |
| 0.5~0.8 | DH-LNA-W8 | 244-0004-2-00 |
| NO PANEL | DH-LNA-W16 | 244-0005-5-00 |

※THE RECOMMENDED SCREW TIGHTENING TORQUE TO BE FROM 0.12 TO 0.3 N · m.

5 THIS PRODUCT WAS DESIGNED TO BE USED WITH FIXED ONTO A PANEL. IN THE CASE THE PLUG IS MATED UNDER UN-FIXED CONDITION AND ADDED STRONG LOAD ON INDICATED DIRECTION. IT HAS A RISK OF BEING PEELED OFF FROM PCB. THEN PLEASE TAKE CARE ON HANDLING WHEN YOU USE IT UNDER THE CONDITION BY FIXING IT ONTO HOUSING OR THE OTHER WAYS.

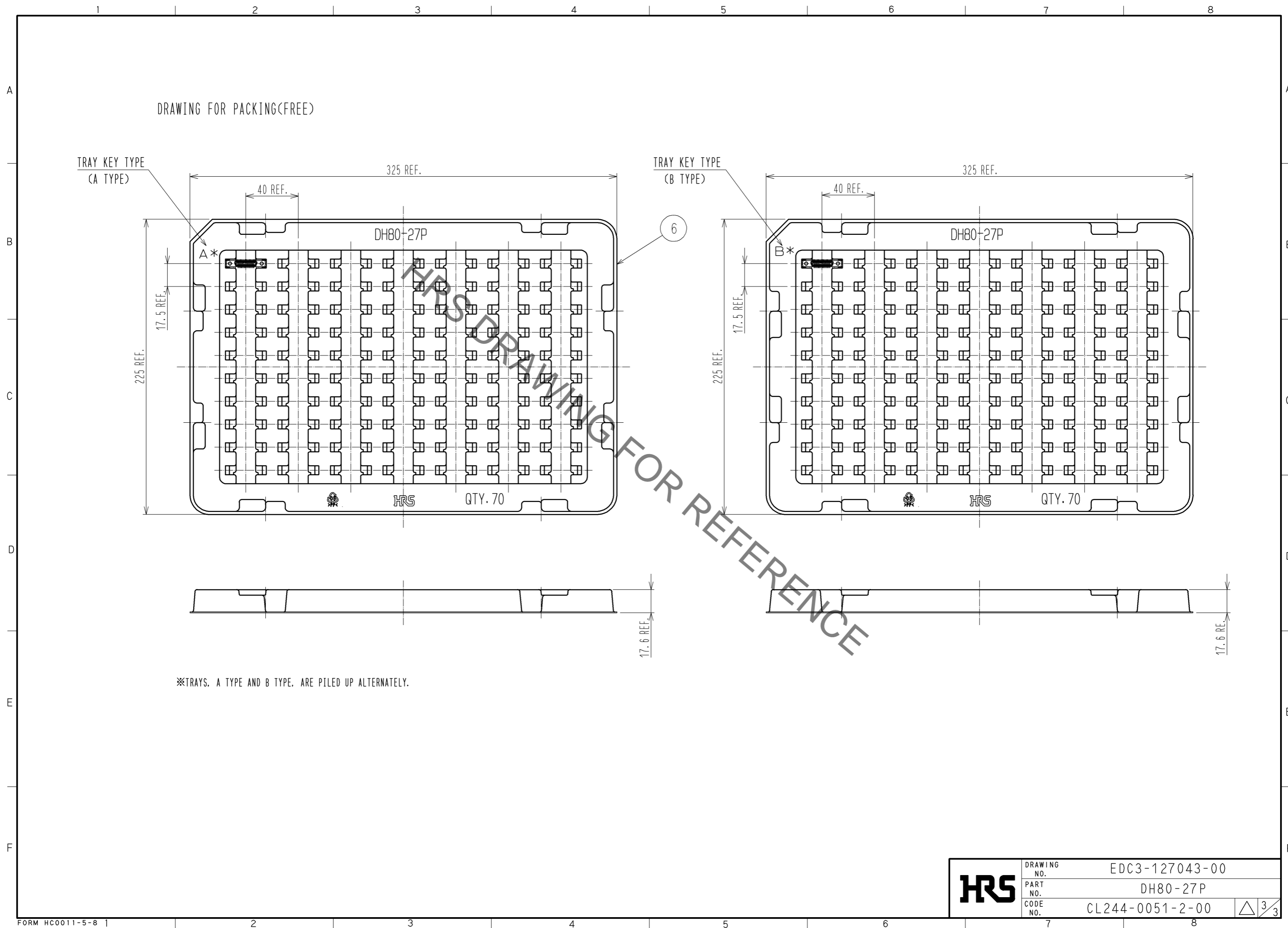


| NO. | MATERIAL | FINISH . REMARKS | NO. | MATERIAL | FINISH . REMARKS |
|-----|-----------------|---|-----|-------------------|---|
| 2 | PHOSPHOR BRONZE | CONTACT AREA : GOLD 0.2 μm MIN LEAD AREA : GOLD 0.03 μm MIN UNDER PLATING : NICKEL 1 μm MIN | 6 | PP | |
| 1 | POLYAMIDE | BLACK UL94V-0 | 5 | PICK & PLACE TAPE | |
| | | | 4 | STEEL | OVER PLATING : NICKEL 3 μm MIN UNDER PLATING : COPPER 3 μm MIN |
| | | | 3 | STAINLESS STEEL | LEAD AREA : TIN 3 μm MIN UNDER PLATING : NICKEL 1 μm MIN |

| UNITS | SCALE | COUNT | DESCRIPTION OF REVISIONS | DESIGNED | CHECKED | DATE |
|-------|-------|-------|-----------------------------------|----------|---------|------|
| mm | 4 : 1 | △ | APPROVED : A0. SUZUKI 10.09.02 | | | |
| | | | CHECKED : KN. ICHIKAWA 10.09.02 | | | |
| | | | DESIGNED : MO. SHIMOYAMA 10.09.02 | | | |
| | | | DRAWN : MO. SHIMOYAMA 10.09.02 | | | |

| DRAWING NO. | PART NO. | CODE NO. |
|----------------|----------|-----------------|
| EDC3-127043-00 | DH80-27P | CL244-0051-2-00 |

Aug.1.2019 Copyright 2019 HIROSE ELECTRIC CO., LTD. All Rights Reserved.
In case of consideration for using Automotive equipment / device which demand high reliability, kindly contact our sales window correspondents.



| | | |
|------------|-------------|-----------------|
| HRS | DRAWING NO. | EDC3-127043-00 |
| | PART NO. | DH80-27P |
| | CODE NO. | CL244-0051-2-00 |
| | | △ 3/3 |